

May 12, 2020

SENT VIA EMAIL

Mr. Patrick Lennberg  
Environmental Protection Specialist  
Colorado Department of Natural Resources  
Division of Reclamation, Mining, and Safety  
Office of Mined Land Reclamation  
1313 Sherman Street, Room 215  
Denver, Colorado 80203

**Re: Permit No. M-1980-244; Cripple Creek & Victor Gold Mining Company ("CC&V"); Cresson Project – Notification of Water Quality Analysis Parameter Exceedance May 12, 2020**

Dear Mr. Lennberg,

In accordance with Rule 9, Section 3.1.7 of the Mineral Rules and Regulations of the Colorado Mined Land Reclamation Board for Hard Rock, Metal, and Designated Mining Operations (Rules), the Cripple Creek and Victor Gold Mining Company (CC&V) hereby provide the Division of Reclamation, Mining, and Safety (Division) with a formal notification of water quality parameter exceedances.

CC&V collected second quarter compliance groundwater samples from monitoring wells PGMW-3 on April 21, 2020 and WCMW-6 on April 22, 2020. CC&V received the lab reports for these analyses on May 5, 2020 and May 6, 2020 respectively, and upon review, CC&V determined that PGMW-3 exceeded established numeric protection limits for aluminum, cadmium, copper, fluoride, manganese, nitrate as N, nitrite + nitrate as N, pH, and sulfate and WCMW-6 exceeded established numeric protection limits for fluoride and manganese. The table below lists the exceedance for the location and the associated parameter and the attached graphs demonstrate the parameter trend for collected data from Q1 2017 to present for WCMW-6, and over the period of record for PGMW-3. As requested please see the attached maps presenting the locations of the wells referenced within this notification.

Location	Sample Date	Parameter	Value (mg/L)	NPL (mg/L)	Table Standard (mg/L)
PGMW-3	4/21/2020	Aluminum	16.7	7	5
PGMW-3	4/21/2020	Cadmium	0.0121	0.005	0.005
PGMW-3	4/21/2020	Copper	1.41	0.20	0.20
PGMW-3	4/21/2020	Fluoride	2.82	2.0	2.0
PGMW-3	4/21/2020	Manganese	10.7	3.0	0.05
PGMW-3	4/21/2020	Nitrate as N	13	10	10
PGMW-3	4/21/2020	Nitrite + Nitrate as N	13	11	10
PGMW-3	4/21/2020	pH	3.89	6.0	6.5
PGMW-3	4/21/2020	Sulfate	551	250	250
WCMW-6	4/22/2020	Fluoride	2.09	2.0	2.0
WCMW-6	4/22/2020	Manganese	0.245	0.20	0.05

Should you require further information please do not hesitate to contact Ronald Parratt at 719.689.4019 or [ronald.parratt@newmont.com](mailto:ronald.parratt@newmont.com) or myself at 719.689.4042 or [justin.raglin@newmont.com](mailto:justin.raglin@newmont.com)

Sincerely,

Justin Raglin  
S&ER Manager  
Cripple Creek & Victor Gold Mine

## Attachments

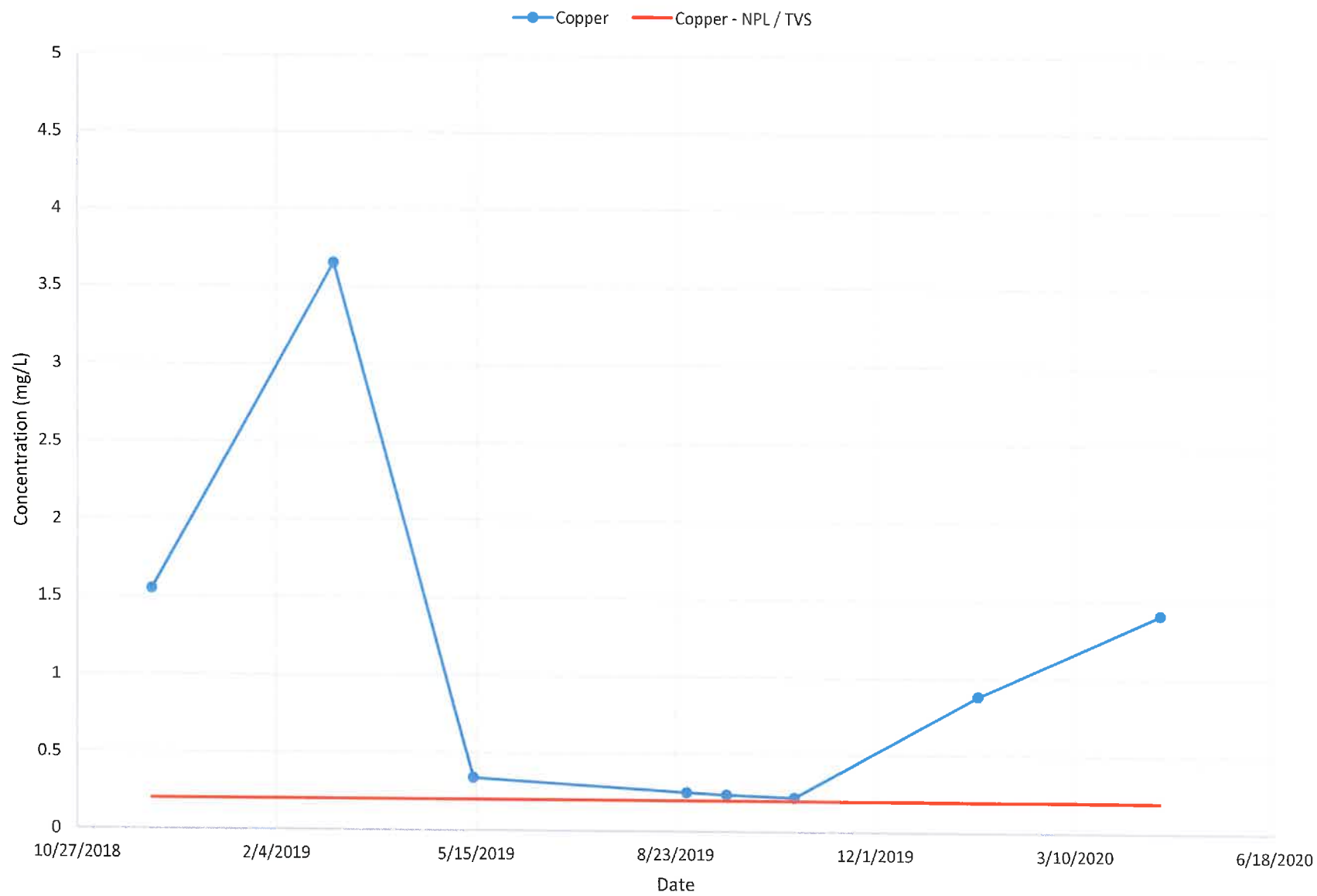
# PGMW-3



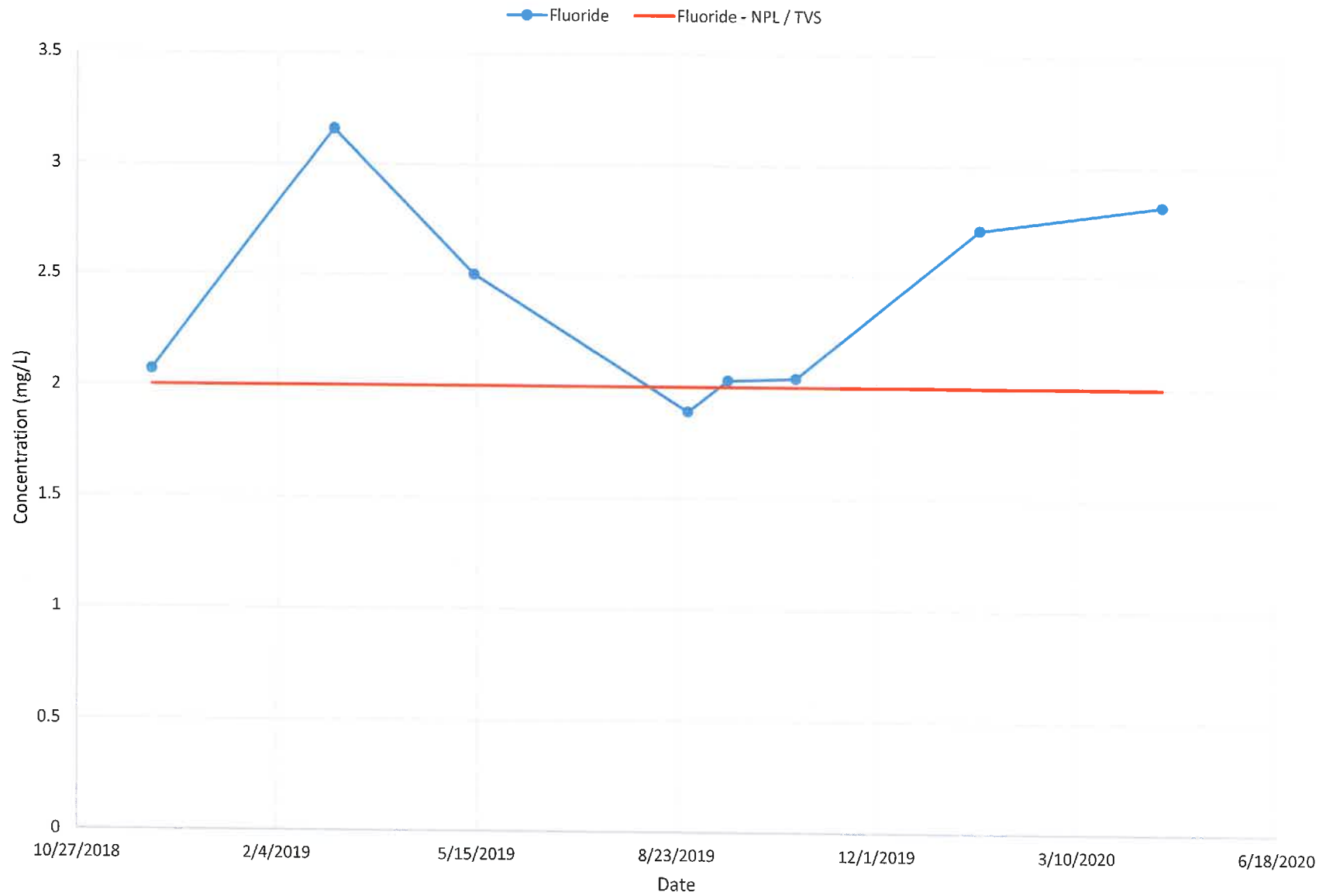
# PGMW-3



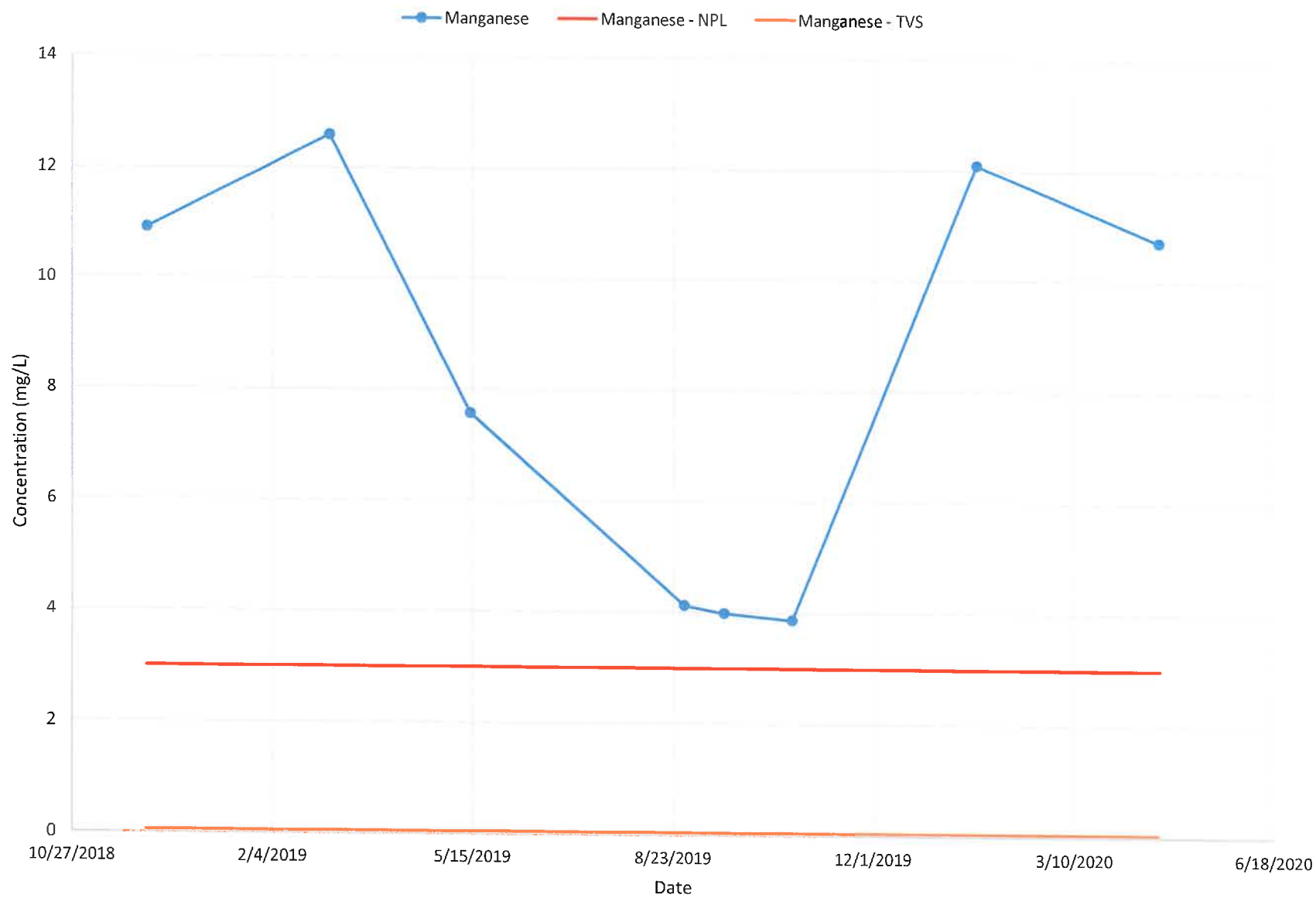
### PGMW-3



# PGMW-3

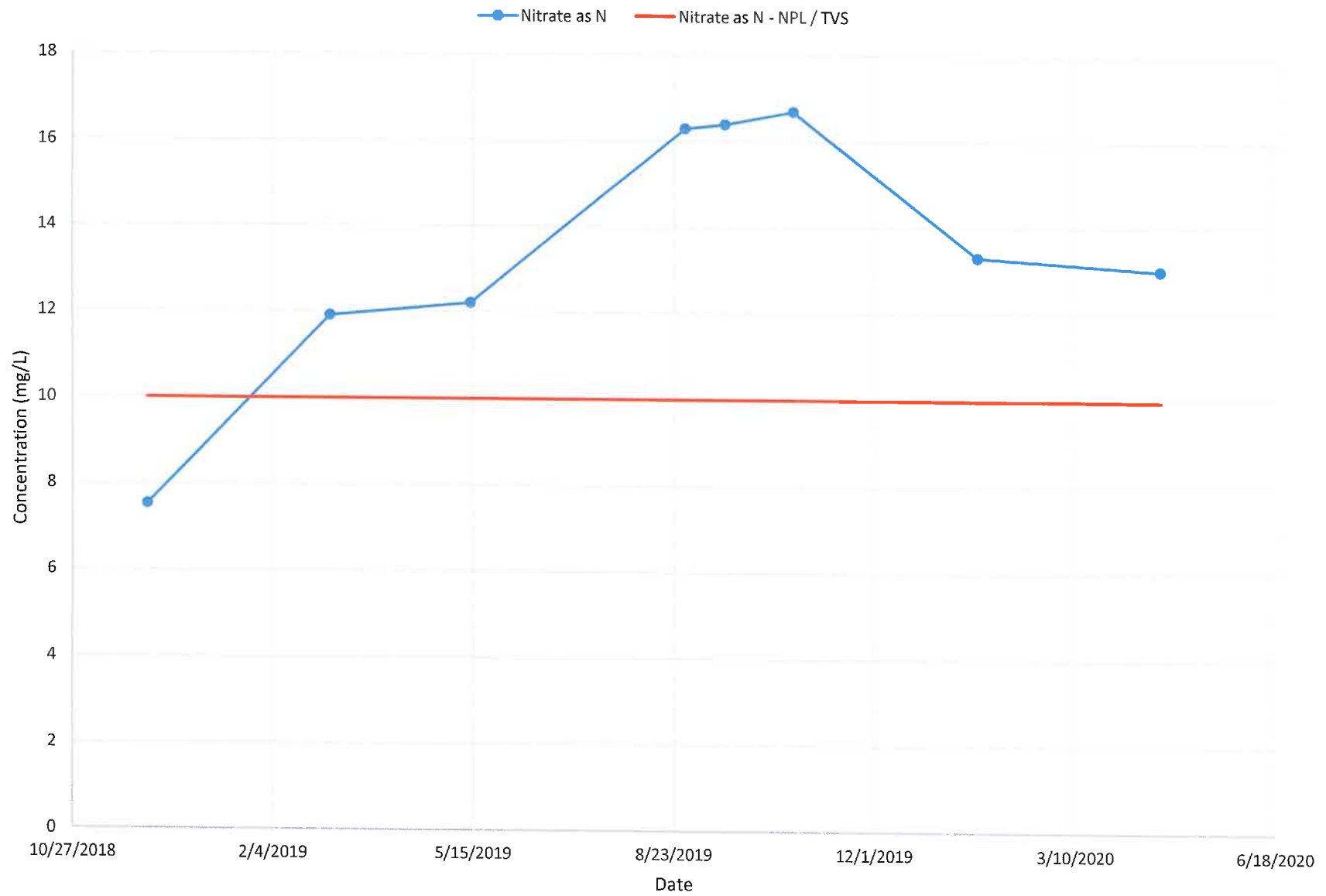


# PGMW-3

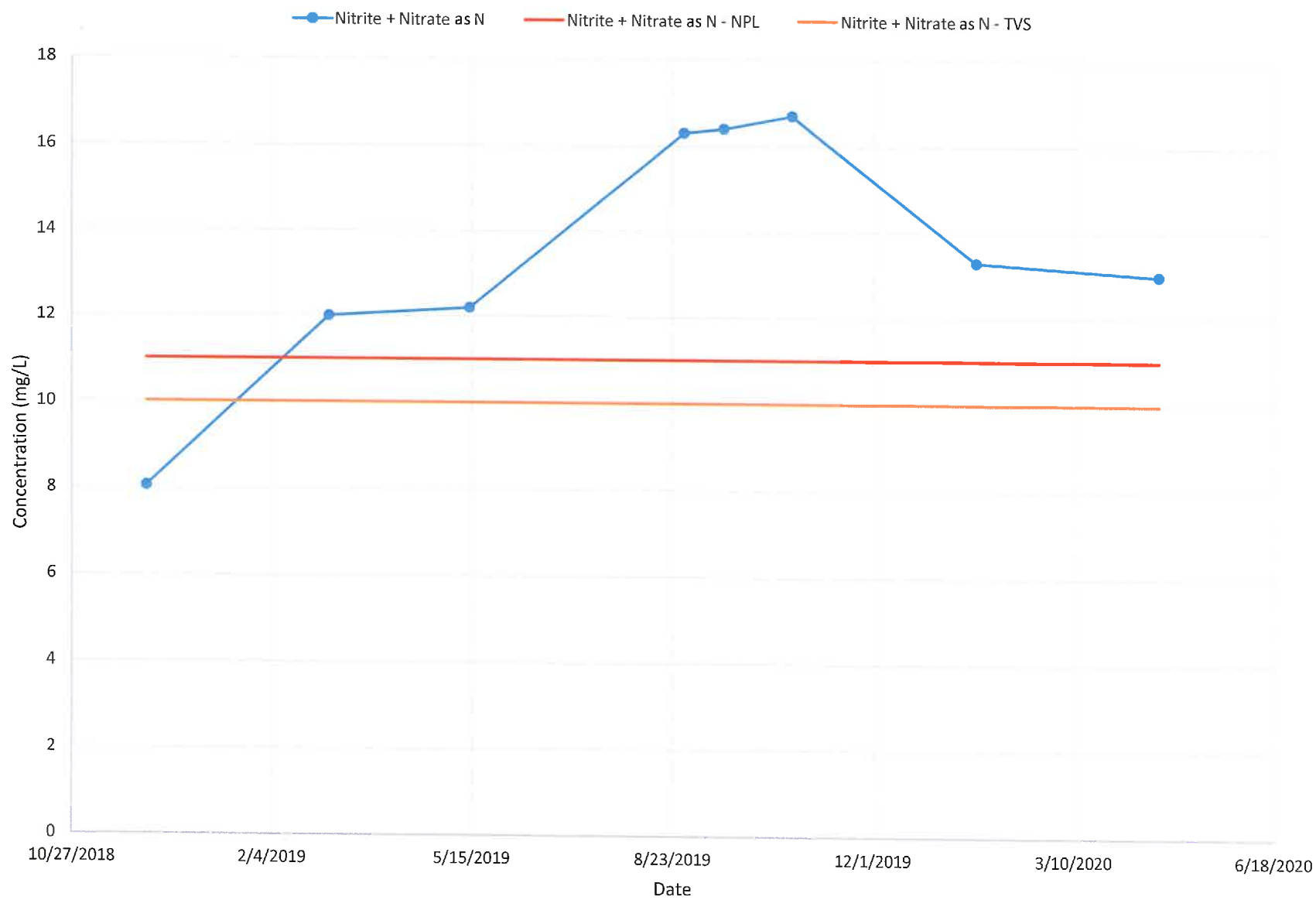




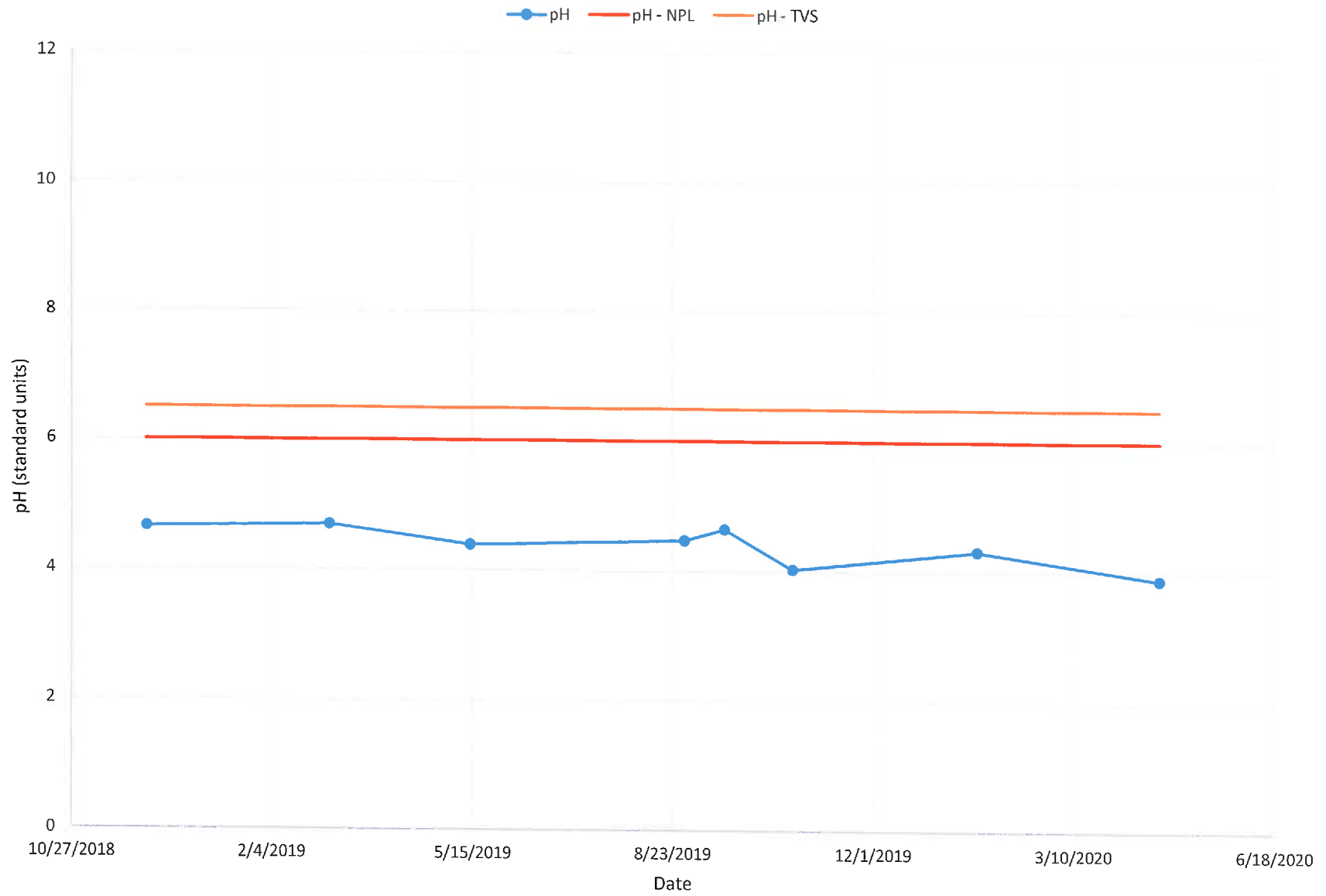
# PGMW-3



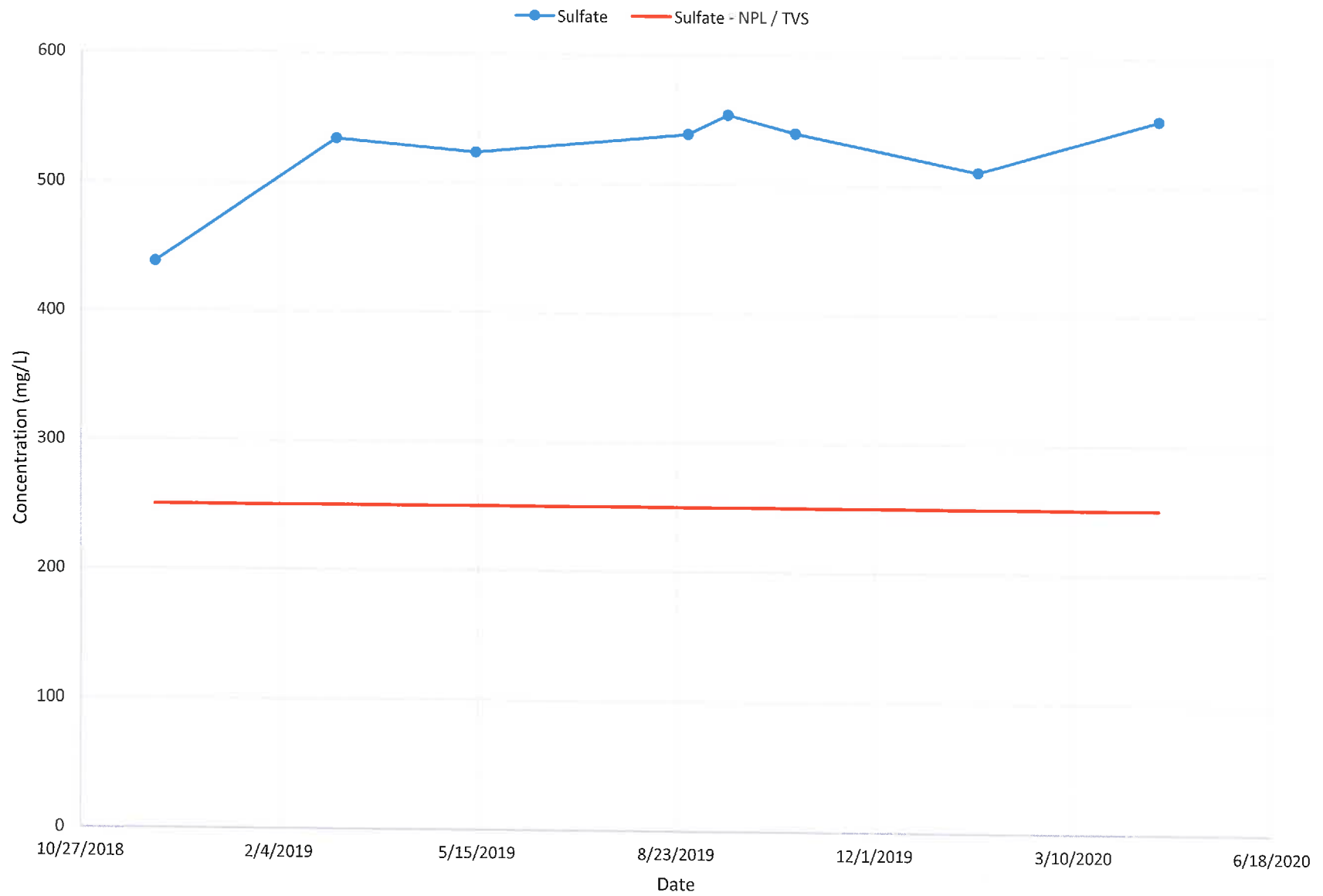
### PGMW-3



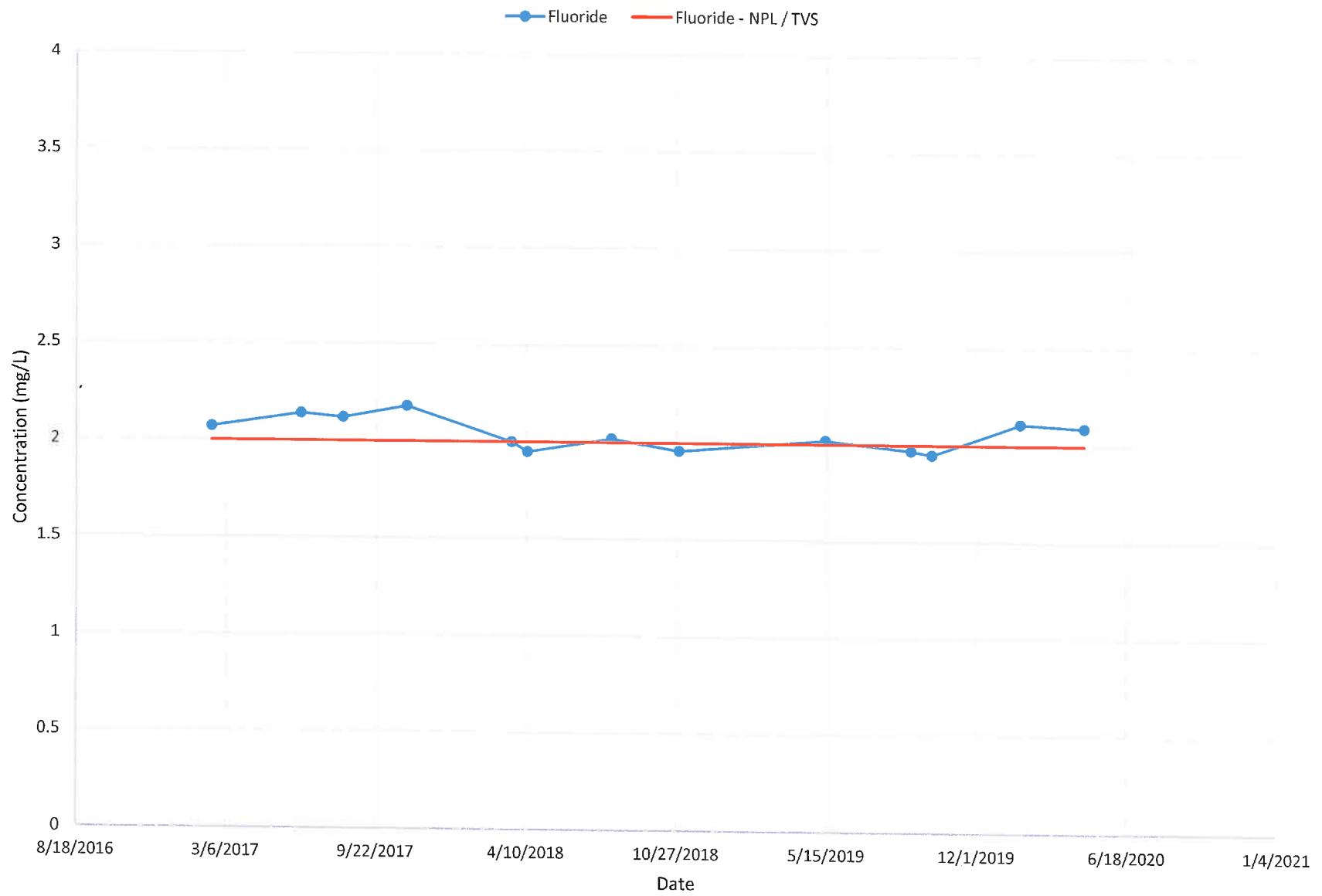
# PGMW-3



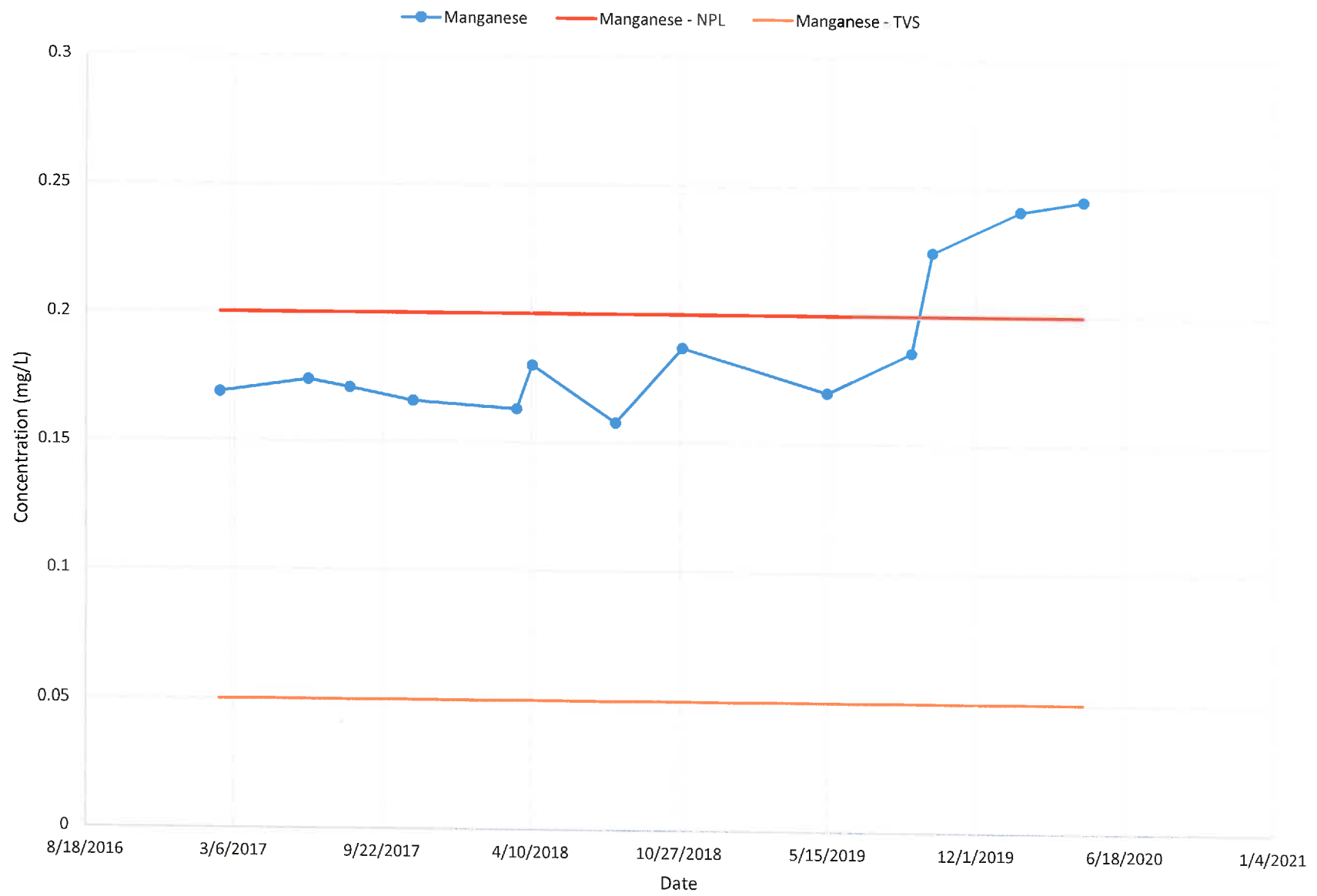
# PGMW-3



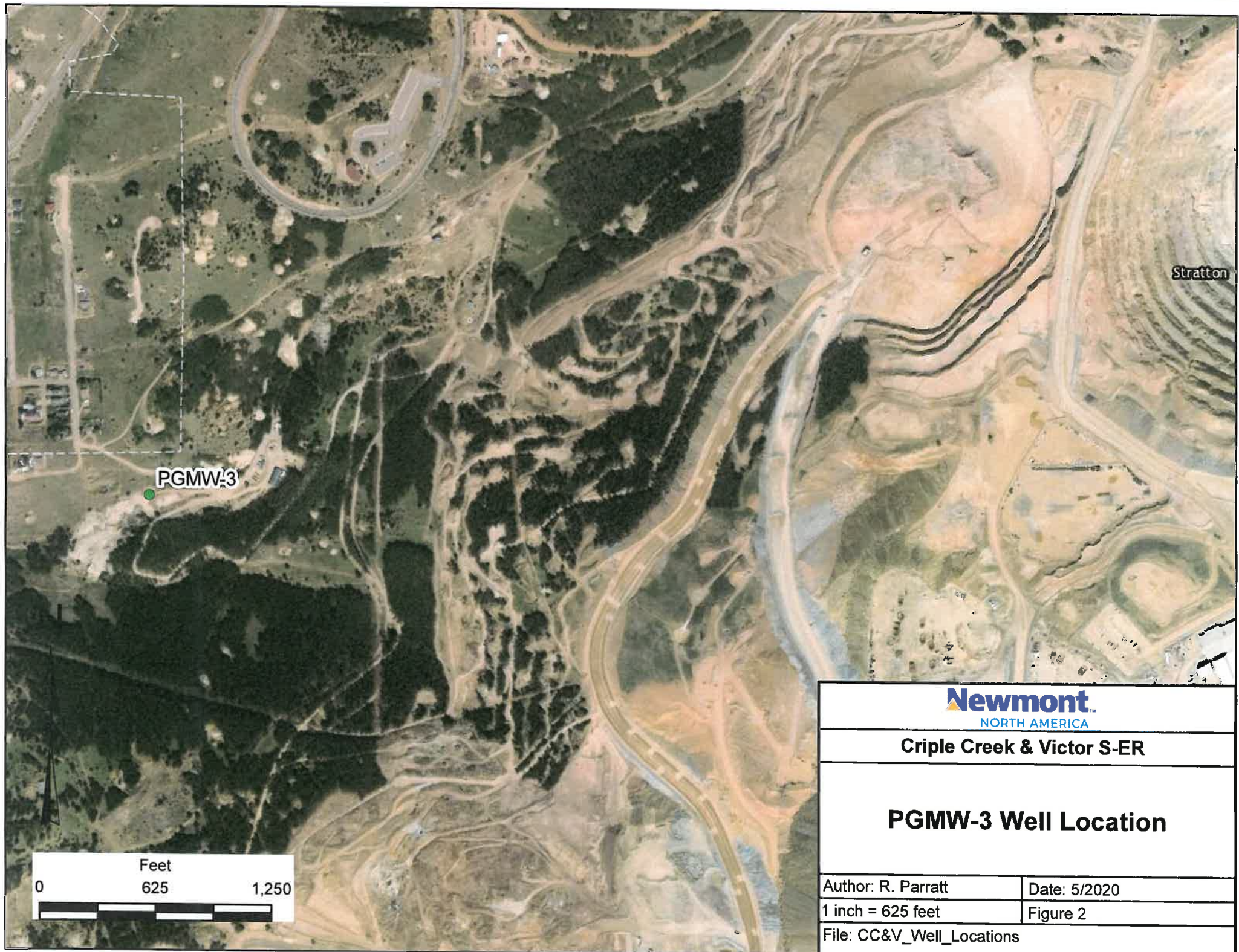
# WCMW-6



# WCMW-6







PGMW-3

Stratton

**Newmont**  
NORTH AMERICA

**Cripple Creek & Victor S-ER**

## **PGMW-3 Well Location**

Author: R. Parratt

Date: 5/2020

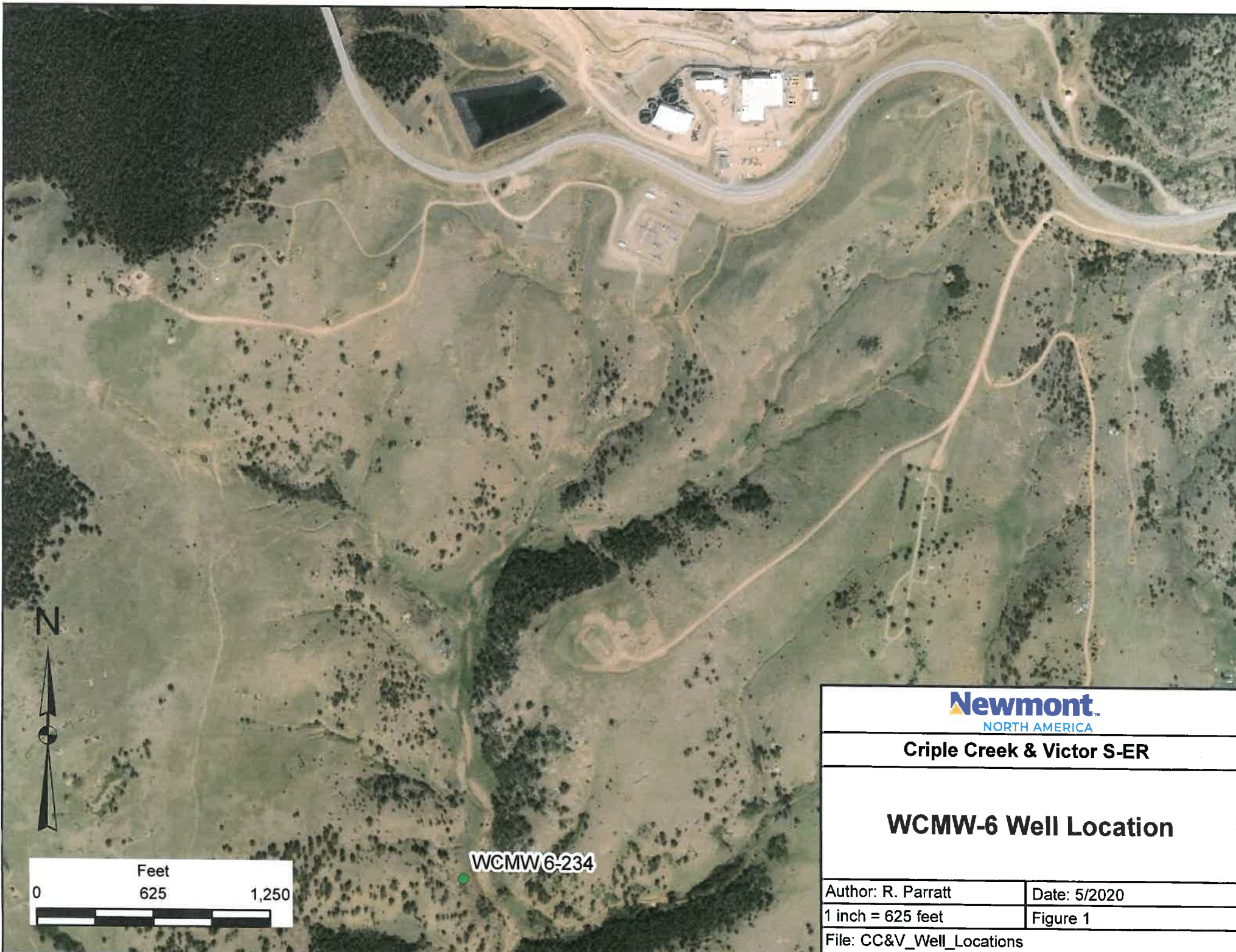
1 inch = 625 feet

Figure 2

File: CC&V\_Well\_Locations







**Newmont**  
NORTH AMERICA

**Cripple Creek & Victor S-ER**

## **WCMW-6 Well Location**

Author: R. Parratt

Date: 5/2020

1 inch = 625 feet

Figure 1

File: CC&V\_Well\_Locations