

STATE OF
COLORADO

Eschberger - DNR, Amy <amy.eschberger@state.co.us>

Pictures of previously seeded and mined area at Glacier Rock

Roger Hageman <roger@hecinc.net>

Mon, May 11, 2020 at 9:52 AM

To: "Eschberger - DNR, Amy" <amy.eschberger@state.co.us>

Cc: Karen Horner <karen@hecinc.net>

Hi Amy,

I have attached pictures and a map of the previously reclaimed and reseeded and established mined area at Glacier Rock. There is a better stand of grass on the reclaimed area than there is anywhere on the undisturbed or unmined areas. To get grass established on this dryland area takes several years, so I do not see any wisdom in reseeding and already seeded area as it once was approved and now it is not because we started mining again but we have not disturbed any of that area at any time since we have been there. That area was approved by your office before we started to mine our new area. The reclaimed area is approximately 8.6 acres according to the google map outline. The area we are mining now has about 8 acres which is less than the 10 acres allotted, and at the time we approach that amount of acres we will either adjust our mined area and reclaim or file to expand our mine area allotment.

Going forward, if we get to the point where we expand beyond the 10 acres and we go back over the mining area now and reclaim part of it so that we keep our mining area under 10 acres, how is that different than 8.6 acres that has been reclaimed already. And it is well established and once was approved.

Please let me know your perspective on these matters.

Respectfully submitted,

Roger Hageman



Phone: 970-221-7173

Cell: 970-566-1918

Fax: 970-221-7163

Email: roger@hecinc.net

5 attachments

IMG_2239.jpg
193K



IMG_2240.jpg
200K



IMG_2241.jpg
202K



IMG_2242.jpg
174K



20200415_121041.PDF
1737K

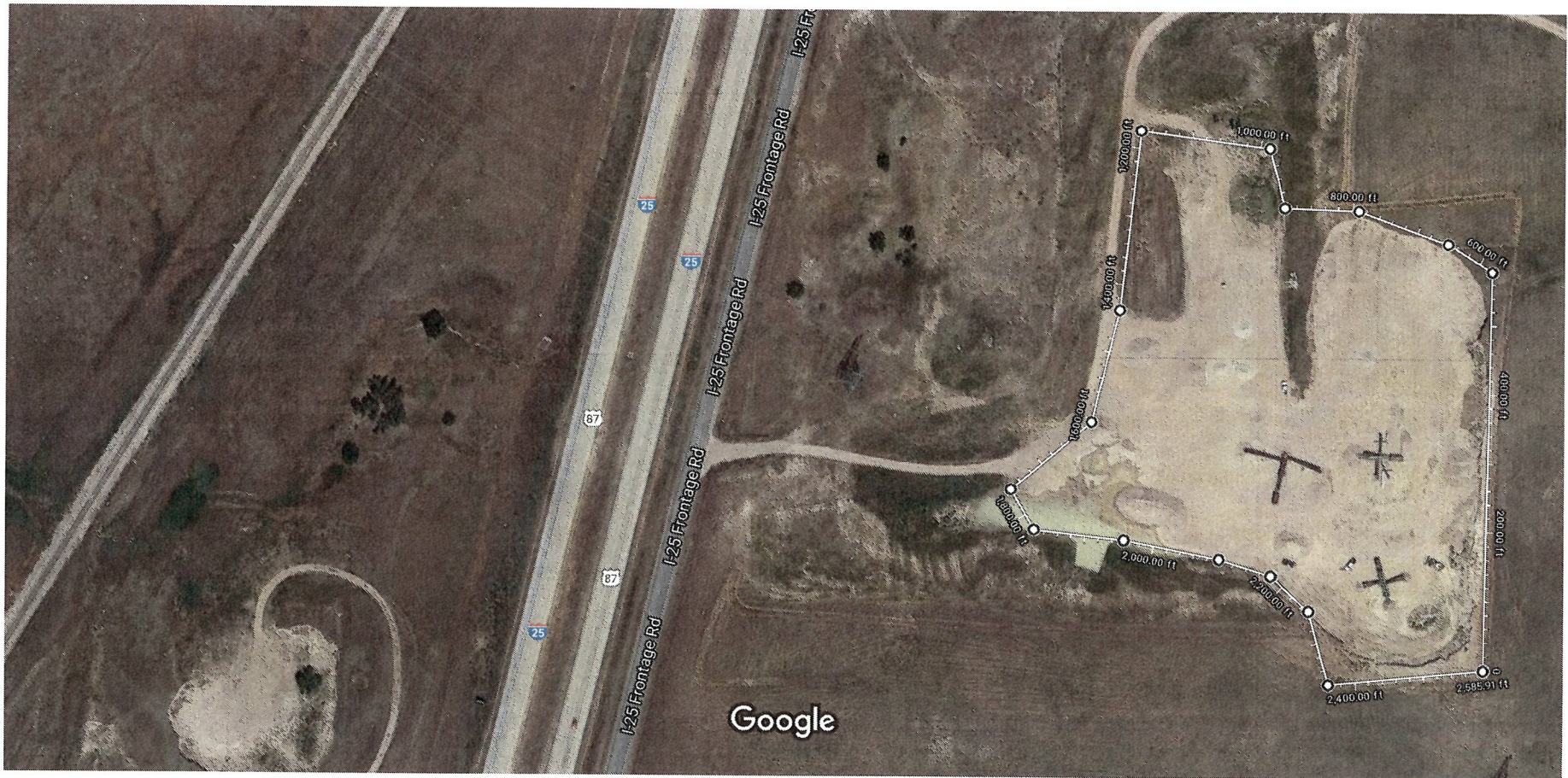


Imagery ©2020 Maxar Technologies, USDA Farm Service Agency, Map data ©2020 100 ft

Measure distance

Total area: 376,684.84 ft² (34,995.17 m²)

Total distance: 3,416.39 ft (1.04 km)



Imagery ©2020 Maxar Technologies, USDA Farm Service Agency, Map data ©2020 100 ft

Measure distance

Total area: 349,191.03 ft² (32,440.91 m²)

Total distance: 2,585.91 ft (788.18 m)







