

DRMS SUPPLEMENTAL REPORT: Concerns in re COMPLIANCE RE BENCHING within HIGHWALL  
12/6/18

MLRB 1978-208 Shaffers Crossing

12/10/18  
2018 Supp. Report by  
operator in compliance  
w/ concerns expressed by  
staff re benching

REPORT: Notice of Inspection 3/13/18

Inspector Michael Cunningham

Division of Reclamation Mining and Safety

Response from Operator Prepared by MOORESJ, Min. Eng., CSM, BSc. Geol., Geophysics (II), Elk Creek Companies, LLLP. /S/ Elk Creek, Sand & Gravel LLC

Reviewed and Accepted/endorsed by BROCKMAN, S, PE Cave Eng. (license # \_\_\_\_\_)

Brockman Engineering Inc, Conifer CO 80433

12/7/18

#### ISSUE

Inspector notified Operator Representative on or around 3/13/18 that there was an issue relating to inspection conducted in which Inspector indicated a concern that the bench configuration within the confines of the permitted and approved highwall design was not being followed.

The inspector indicated that he had participated in site walk-through and in that walkthrough he made a number of observations: a) signage was insufficient and did not comply with the terms of the Regulations enforced under the Division Rules, b) that a weed control plan was absent from the Operators file or not otherwise sufficient and that the Division was requiring that the Operator provide a technical revision to its permit such that this addressed and conformed to the regulatory requirement under the Rules to include an acceptable weed control plan

c) that the Inspector was unable to visually confirm that the Operator was complying with the stipulated bench configurations, particularly the bench width relative to the bench height, in order to conform to the recommendations presented under the geotechnical report filed on behalf of the Operator in 2006 (the Brierley Geotechnical and Slope Stability Analysis)

This report addresses the issue specifically of the HIGHWALL BENCH WIDTH CONFIGURATION such that the specified configuration is an 8'-0" bench no 76 degree angle of repose, and the benches are 12'-0" by 35'-0" in the perpendicular (See exhibit FIGURE 10c 2006 BEI ODP Final USES and Plan PDF) wherein the final Bench design for the highwall submitted to and accepted by DRMS Board, based upon Division recommendations, complies with the calculations and toppling or over turning moment restrictions from the 2006 Geotechnical report

#### SPECIFIC CONCERN BY DIVISION STAFF

The specific issue that was a concern raised by Vision Staff is that the prescribed bench configuration as indicated, since it did not exist, would have to be implemented in order to bring the highwall into

compliance, and the Division staff inspector indicated concerns that in order to do so, it would be necessary to lay back the highwall from the existing mined the bench spacing (width) as indicated on the approved plans (2006) that the Operator would have to decline the angle (attitude) of the highwall, laying it back from its existing angle of repose and in doing so, given the offset distance between the crest of the highwall and the adjacent parcel, that the inspector was concerned that this action would impinge on the parcel, disturbing lands that were outside the approved permit boundaries.

Tus in order to do so, Operator would necessarily have to engage in pursuing a 112 permit process.

Operator was provided with a 60 day periods within which to remedy this issue to the satisfaction of division staff.

Operator was notified that the permit application process would be triggered on a 100 day window upon revocation of bond by Board members, or by the application process having been triggered by the Applicant/Operator.

#### RESPONSE BY OPERATOR

The Operator (Elk Creek Sand & Gravel LLC) hereby provides the following response to the Notice of inspection concerns as provided by written report to the Operator on 3/13/18

1. The Operator denies that it was mining out of compliance with the approved mine plan and moreover indicates that the benches are in fact in place and in compliance with the reclamation plans as provided to the Division, and by and through their recommendation, as approved by the Board in 2006 (see 2006 ODP Grading and Erosion Control Plans (3 pages BEI & Assoc., Inc., 2006) , Reclamation Plans (Falcon Surveying) an 3D wire mesh rendering (Falcon Surveying) together with Post Mining Rendering (Falcon Surveying, 2006) and Site Plan and Drainage Plans (Purrington Engineering 2006/2007).
2. Operator contends that it was mining in compliance with approved Plan and as such that the bench configuration exists.
3. Operator further contends that benches not only exist in appliance with e approved mine plan but are further, confirming to innovative specialty techniques employed by Operator in that Operator has engaged in 'staggered' blasting techniques, some alternating decoupled shots and other mechanisms during the drilling and blasting of the final row of drill holes (blast holes) closest to the toes of the exposed highwall face and that such mechanism is an innovative techniques developed specifically for this lithology locally here at this Quarry in order to present a finish highwall at the final pit limits configuration which achieves a more natural prance, a 'so fend' appearance, relative to the more traditional 'harsh and unnatural design characterized by the decoupled presplit shot.
4. Operator finally submits that in the event that Inspector/ Division determines that the Operator has, without admitting fault, failed to conform to the final pit list configuration as stipulated, that it is mining in a lithology which based on its geological and geotechnical characteristic, conforms to a geometry which can support an over steepened sub vertical highwall mechanically and thus request that should the Division find it is non-compliant, that the Division



consider a waiver under the Rules allowing for a minor modification under a technical revision supporting a more vertical highwall.

Operator submits as evidence for the above as follows:

- a) Operator provides Division Staff by electronic submittal on or proximal to 4/13/18 surface topographic detailing the contours of a drone flyover on or around September 2017. No changes to the finished highwall have taken place between September 2017 and May 2018, for the section of the highwall in question. Such flyover by Alphapixel Services Inc., Evergreen CO, was converted to surface topographic contours on a 2'-0" interval in a CAD format, however, as since Alphapixel is not certified land surveyor in accordance with State regulations, the work product could not be verified and was indeed generated at 8 degrees from vertical in the oblique. Given the potential for discrepancy and the lack of resolution on the final work product this was rejected by Division staff. Operator also requested an additional extension of 60 days' time to pursue a reasonable remedy in the alternate. (EXHIBITS 1, 2, 3)
- b) Operator pursued a second drone survey with resulting topographic survey through Falcon Surveying, Inc., Principal Jeff McKenna. The Falcon crew was mobilized in June 2018 and had mixed success in obtaining data given a wind event interrupting data collection at the site. Of the three drones employed, only one had a reasonable level of success. Following this the crew extrapolated data and developed a full size CAD rendering of the property overlain by a certified survey of the property and anchored on a state registered memorial within the CDOT ROW at the NW corner of the property. The Data was provided to the Operator in July 2018. This data employed a 5'-0" contour interval. The Operator provided the results of the survey to the State Inspector at the Division thereafter. (EXHIBIT 4)
- c) Operator submits to the State Inspector as evidence that it is compliance the following
  - 2018 TOPO Certified Survey on 5'-0" intervals (as detailed EXHIBIT 4) (Falcon Surveying 2018) – indicating 5 sets of benches (variable) in compliance with the plan as approved by State and in accordance with the Rules, given those sections where mining is complete
  - Geotechnical and slope stability report and GEOLOGIC REPORT (2006) (prepared by Alan Howard, PE., Brierley and Associates) (EXHIBIT 5) – indicates through a Mohs Coulomb curve and phi values that the slopes as indicated fall within the recommended design limits (restrictions) as provided for in the report and are thus not subject to potential overturning or toppling.
  - Geologic Report (Fox and Assis 1978) (EXHIBIT 6) – indicates values within the materials more specifically where those values are defined by the more exposed westerly weathered colluvium and other material characterized by a more decomposed feature, presenting more potential for failure and toppling. Given that this layer is given as between 5'-0" and 10'-0" thick generally speaking in those areas where it existed (along the Elk Creek side of the properties) this material has thus been mined out and no longer exist and therefore, by definition, cannot be considered to form part of the rock mass in question
  - Operator submits various annual inspections of the

Highwall ((I) 2018 ANNUAL HIGHWALL INSPECTION AND SLOPE STABILITY ANALYSIS)  
(EXHIBIT 7) and

((iii) 2018 3<sup>rd</sup> quarter MSHA DAILY WORKPLACE EXAMS – HIGHWALL INSPECTION REPORTS) (EXHIBIT 8) in conjunction with

(iii) GEOLOGIC SAMPLING DATA RESULTS (EXHIBIT 9a through 9e) made up of (I. CORE DRILL DATA, II. GEOLOGIC HAND SAMPLING, III. WATER WELL DRILLING CUTTING DATA where recovery was feasible, IV. FACE EVALUATIONS OF EXPOSED MINED HIGHWALL SECTIONS in active mining areas and V. OTHER\*\*)

- d) Operator submits their own 2018 AFFIDAVIT OF INSPECTION (EXHIBIT 10) by Independent Consultant verifying the existence of the Benches as indicated in the Topographical Survey, Bench Cross sections and other independently verified by BROCKMAN, Steve, (2018) BEI & ASSOC INC, (12/5/18)
- e) Operator submits various cross section studies and extrapolations and interpolations, and conjecturally offers the 3D rendering which none quantifiably demonstrates the highwall and bench configuration in a graphical 3D wire mesh rendering or through the use of interpolated sections to provide the viewer with a perspective of the highwall in section to include the benches. (EXHIBIT 11a through 11f).
- f) Operator submits by way of indication that a visual inspection of the highwall exposed surface from an oblique or flat angle by the casual observer can be misleading in that the areas of the exposure which are largely characterized by the foliated migmatized gneiss together with the convoluted gneissic fabric make the specific bench development difficult to discern with the naked eye. In addition the innovative blasting techniques employed by the Operator in the second and final rows of blasting against the highwall further 'confuse' a visual inspection by deliberately obfuscating the mechanical symmetry of the bench configuration, and this can mistakenly lead the casual observer to determine that there is a more upright appearance to the quarry than is in fact the case, and that can be demonstrated mathematically as the function of the crest of the highwall to the toe of the highwall is found to be 68 degrees, at its most narrow point, whereas the Brierley report indicates that the highwall is still well inside the safe operating parameters at 73 degrees, and thus well within the compliance limits. In fact in the attached ODP graphic (2006) and TOP (2018) (Falcon) the toe of the highwall is 102'-0" L.F from the crest of the highwall (offset distance) and the change in elevation from 7945'-0" to 8145'-0" is 200'-0" resulting in a 51% highwall, substantially less than the minimum. This is further demonstrated by photographing the highwall from the side at 90 degrees to the foliation and along strike. (EXHIBIT 12) By doing so the bench configuration is more pronounced and the benches are immediately apparent. Lastly the Operator submits external corroboration of this by other inspectors where in 2008 MSHA inspectors cited the Operator under Part 46 for highwall violations, indicating that the Operator was to keep a minimum offset distance of not less than 30'-0" from the toes of the highwall, following an even that another quarry. Operator appealed decision and citation and ease successful on appeal and Federal inspectors reversed their decision when Operator was able to demonstrate that the highwall was significantly more stable than commensurate quarries of its type locally and elsewhere and would not experience the same type of failure that precipitated the event elsewhere; this action confirming engineering calculations by Operator and consultant that demonstrated the competency of the highwall configuration and ability to stand almost vertical with a better than 96 degree of confidence. (r-squared coefficient of correlation)



12/6/18

MLRB 1978-208 Shaffers Crossing

- g) Finally Operator submits that, as evidence in the attached, the pre-existing condition of the property with the exposed mine face was such that in a number of areas the sections are approaching 90 degrees. Where this is evidenced by the attached survey by Falcon Surveying (2003) which indicates that the shallower section of the preexisting highwall had been over-excavated to approximately 79.87 degrees and that the contour interval in the survey demonstrated a concentration of contour lines on a 2'-0" ft. interval such that the contours tend to coalesce and obstruct a clearer view of the structure and components of the topography in the map. This data demonstrates that some of the highwall sections were already in a preexisting condition such that Operator was restricted in their options in pursuing an optimal solution such as declining the angle of repose on the highwall for these sections and thus was confined to pursuing the best alternative remedy in such cases.

#### EXPLANATION

I have reviewed (leave this up to Steve to add change etc.)

\*\* ENDORSED AND STAMPED BY PROFESSIONAL ENGINEER, Steve BROCKMAN, BEI # \_\_\_\_\_

12/6/18 \*\*\*\*

ATTACHMENTS/ EXHIBITS

Surface TOPO (Falcon Surveying 2018) indicating current surface conditions and indicating the location of concerns by Staff

2013 Forest Agricultural Plan scan (PDF)

2006 GRADING AND EROSION CONTROL ODP BEI Shaffers Crossing Property

2016 10/13/16 Grading & Drain Violations (2 EA) issued to Rodger Moores scan (PDF)

2017 10/1/17 Oct 2018 planned Forest Ag Work Plans indicating roadwork

2017 9/14/17 Grading & Drain Violations (2 EA) issued to Rodger Moores scan (PDF)

2017 9/24/17 cease and desist all work arising from Forest Ag grading activities per County

2018 April Forest Ag Inspection decertification indicating removal from eligibility certification to participate in Forest Ag Program work arising from failure to complete roadwork (Notification of suspension of roadwork by County Feb 2018)

2018 Nov RESOLUTION and agreement between parties to terminate violation conditions arising from the grading activities associated with Forest logging road: stipulation outlying and authorizing work/conditions to terminate violation conditions

2018 11/26/18 inspection terminates erosion control violations from grading activities (email G Bennetts JeffCo Highways and Trans)

2018 12/6/18 grading permit terminates grading violation arising from grading activities (forest Ag logging road) (BEI & Assis Inc., at County Planning Review as of 12/6/18) (copy plan attached)

Soil Report: Jefferson Soil Conservation District (1978 corroborated by site visit from Jefferson Soil Conservation District 2/12/18)

Drainage district report (CDOT 2010)

Drainage calks contributing quadrants (1978)

Drainage calks detention pond (1978)

Purrington Engineering Site Plan (2006)

Purrington Engineering Drainage Plan Shaffers Crossing (2006)

(Ground) Water Quality and Runoff (Drainage) Study (2006) the water quality lady

Ariel Map Wells (2006) (State Water Engineer Colorado)

Sheet 2 of the 2006 ODP graphic (BEI) indicates the accepted BMP practices and uses of erosion control techniques, materials employed in mitigating erosion control issues (these techniques and BMPs are being employed with respect to the disturbed areas indicated)





DRMS SUPPLEMENTAL REPORT: Concerns in re COMPLIANCE RE BENCHING within HIGHWALL  
12/6/18 MLRB 1978-208 Shaffers Crossing

Pictures of logging trail/disturbed areas, erosion control measures implemented,



ADDENDUM TO 2019 Annual DRMS Report

Elk Creek Sand & Gravel LLC

Shaffer Crossing Quarry Facility

Permit Number MLRB 1978-208

Report filed 2019-9-23

In conjunction with the requirements under the Construction Materials Extraction Plan approved and on file in state records please find attached:

Addenda to the Permit Report

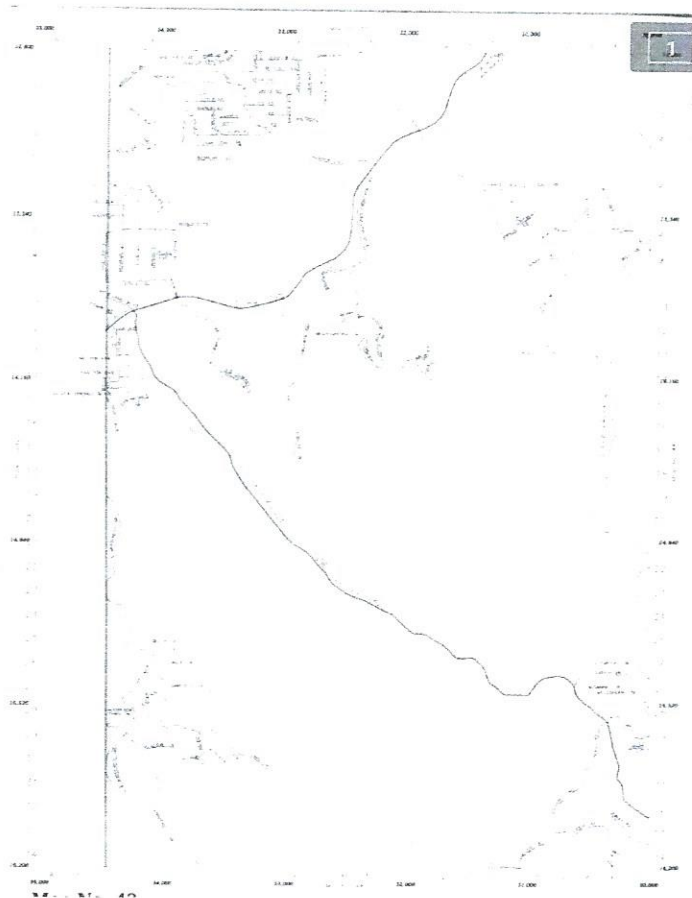


Figure 1 Area map of 285 Corridor indicating location of subject property

ADDENDUM TO 2019  
DRMS Permit Annual  
ELK CREEK Report  
Sand & Gravel LLC

(hand delivered and emailed  
9/24/19 since slow  
internet will not allow opt  
to upload to PRMS server m  
permitting site - server time  
out)

Shaffers Crossing Quarry is a 110© located approximately 18 miles west of the Metro area on Highway 285

This is a hard rock quarry featuring a phenomenal deposit characterized by the Precambrian Migmatized gneiss from the Idaho Springs formation in close proximity to the Pikes Peak Formation, recognizable with its silica rich-, porphyritic characteristic, robust coloring and highly abrasive features. The two deposits work together to form a unique and exceptional aggregate reserve.

Mining was almost exclusively restricted to the 8135 EL bench with a mined face of 55 feet developed in two benches. Blasting is restricted to this bench.



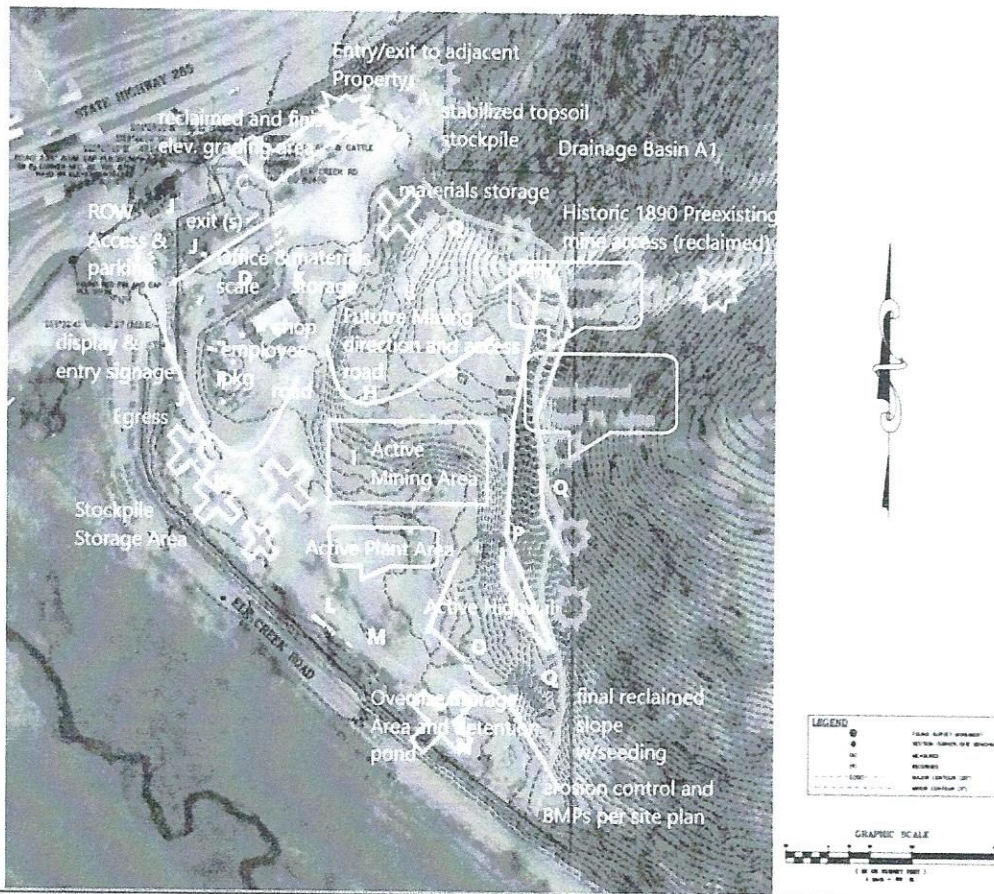
# ELK CREEK Sand & Gravel LLC

There have been no uncontrolled activities or structural movement and the highwall appears stable and unremarkable.

Exhibit 1 Indicates detail of activities superimposed on topographic map depicting the boundary locations and location of reclaimed acreages as indicated in the annual report pursuant to the Colorado Mined Land Reclamation Act and/ or the Colorado Land Reclamation Act for the Extraction of Construction Materials (C.R.S. 34-32-116 or 34-32.5-116). Shows the current affected acreages and area under production. Due to the restricted area and nature of the cut this typically does not see a wide variety of changes annually.

## TOPOGRAPHIC SURVEY

A PARCEL OF LAND SITUATED IN THE SOUTHWEST 1/4 OF SECTION 32,  
TOWNSHIP 6 SOUTH RANGE 71 WEST OF THE 6TH P.M.  
COUNTY OF JEFFERSON STATE OF COLORADO







ELK CREEK  
Sand & Gravel LLC

## Symbol INDEX



reclaimed area with no apparent growth under current weed control plan, limited plantings or other than ornamental trees, some willows (lapx. Sp.) within riparian habitat or channel.



reclaimed area along prism of highwall indicates some success with reclamation over 1 ac restored/reclaimed allowing for reestablished vegetation species as follows



storage areas primarily to include riprap, aggregates and other reclamation materials and other (stabilized)



yellow line designates the limits of the intersection between active mining area and completed highwall, stabilized and final



a pale blue line indicates the typical easement/egress/exit routes primarily used as part of traffic flow ( this in compliance with BMPs to maintain fugitive dust exposure within permit levels)



the green line indicates the perimeter significantly reclaimed approximately, inside the active mine permit limits, and as stipulated under the weed control plan, where this is performing in conjunction with BMPs and the weed control plan submitted and on file with DRMS (2018)

A – entry gate to adjacent property includes fencing pursuant to DRMS reqmnts

B – FUTURE active mining area (hardrock) and direction of planned mining phases to include a shot block in place from which active extraction is taking place currently



C – Final grading and some stabilization final elevation established in accordance with stipulations within the site plan, grading plan and weed control plan together with BMPs for erosion control, weed control, drainage discharge, etc.

D – office and scale

D – adjacent arboreal North facing flank of PARCEL B, indicating the bulk of the collection are for contributory non =point discharge (Area A') with no apparent run-off issues / other (Bothe contribution area A', B' n the Westerly exposure were inspected and approved as being compliant and noncontributory per Jefferson County H & T, G Bennetts 11/9/18). Incorporates Drainage basin (Per CDOT ) A' by reference

E – masonry shop building (1985)

F – employee only and other vehicle parking and maintenance area adjacent to oil storage in compliance with MSHA Part 46

f' – ROW and parking

G - vacant

H – access route to highwall

I – Active shot mine block from which current extraction taking place

J – egress and signage, exit and discharge ramp

K - materials storage (multiple locations) and loadout area

L – active plant closed-circuit crushing and prescreen

M – boneyard and jaw/surge pile

N – oversize storage and some other secondary reclamation materials stockpile and initial phasing of detention pond pursuant to County site plan (2006)

O – active highwall

P – final highwall consistent with initial geotechnical proposal and in compliance with recommendations of expert together with mine design criteria establishing final recommended bench configurations and layout

Q – reclaimed areas inside of boundary limits and within pit limit prescribed reclaim area offered in accordance with criteria as stipulated in weed control program, under and in compliance with the 1990 Colorado Noxious Weed Act (Act), Colorado Revised Statute Title 35 Article 5.5 (CRS 35-5.5-101) whereby the Colorado legislature places all public and private lands in Colorado under the jurisdiction of





local governments to manage noxious weeds in any area of the state (DPI, 2002). The plan allows for integrated weed management via cultural, mechanical, and as necessary chemical or biological methods with revegetation and stabilization of graded slopes taken place, no perceptible/visible erosion issues indicated nor other. Noxious weeds and the approved plantings are indicated and listed as follows in compliance with the stipulations as outlined in the DRMS Annual reporting requirements:

(Report follows)

**NOXIOUS WEEDS AND REVEGETATION PROGRESS UNDER THE PRESCRIBED WEED CONTROL PLAN**  
(OCT 2018) (technical revision by Operator)

The Act defines noxious weeds as "an alien plant or parts of an alien plant that have been designated by rule as being noxious or have been declared a noxious weed by a local advisory board, and meets one of the following criteria;

Aggressively invades or is detrimental to economic crops or native plant communities; is poisonous to livestock;  
Is a carrier of detrimental insects, diseases, or parasites; or  
The direct or indirect effect of the presence of this plant is detrimental to the environmentally sound management of natural or agricultural ecosystems."

There are not a lot of noxious weeds as these are systematically hand removed, but those occurring appear to be predominantly:

cheatgrass,

lesser amounts of diffuse knapweed (*Acosta diffusa*)

spotted knapweed (*A. maculosa*)

Canada thistle (*Cirsium arvense*)



## PLANTINGS

Riparian and coniferous forests flank the hillside and shrublands line a channel (unnamed drainage) that runs west-east through the study area south of SH285. The forests include

Aspen

Ponderosa pine (pinus)

Spuce

riparian shrublands are dominated by thickets of

coyote willow (*Salix exigua*).

Wetlands consist of a mix of various persistent emergent species common to the region. Representative species include

reed canary grass (*Phalaris arundinacea*),

Nebraska sedge (*Carex nebrascensis*),

various rushes (*Juncus* sp.)

cattails (*Typha latifolia*).

Remnant native upland vegetation is dominated by short-grass prairie species of Foothills Grasslands (CNAP, 1998). Common species include

three-awn grass (*Aristida* sp.),

sand drop seed (*Sporobolus cryptandrus*),

rabbitbrush (*Chrysothamnus nauseosus*),

poison ivy (*Toxicodendron radicans*)

prickly pear cactus (*Opuntia polyacantha*).

smooth brome (*Bromus inermis*) is more common in the disturbed areas.





**ELK CREEK**  
Sand & Gravel LLC

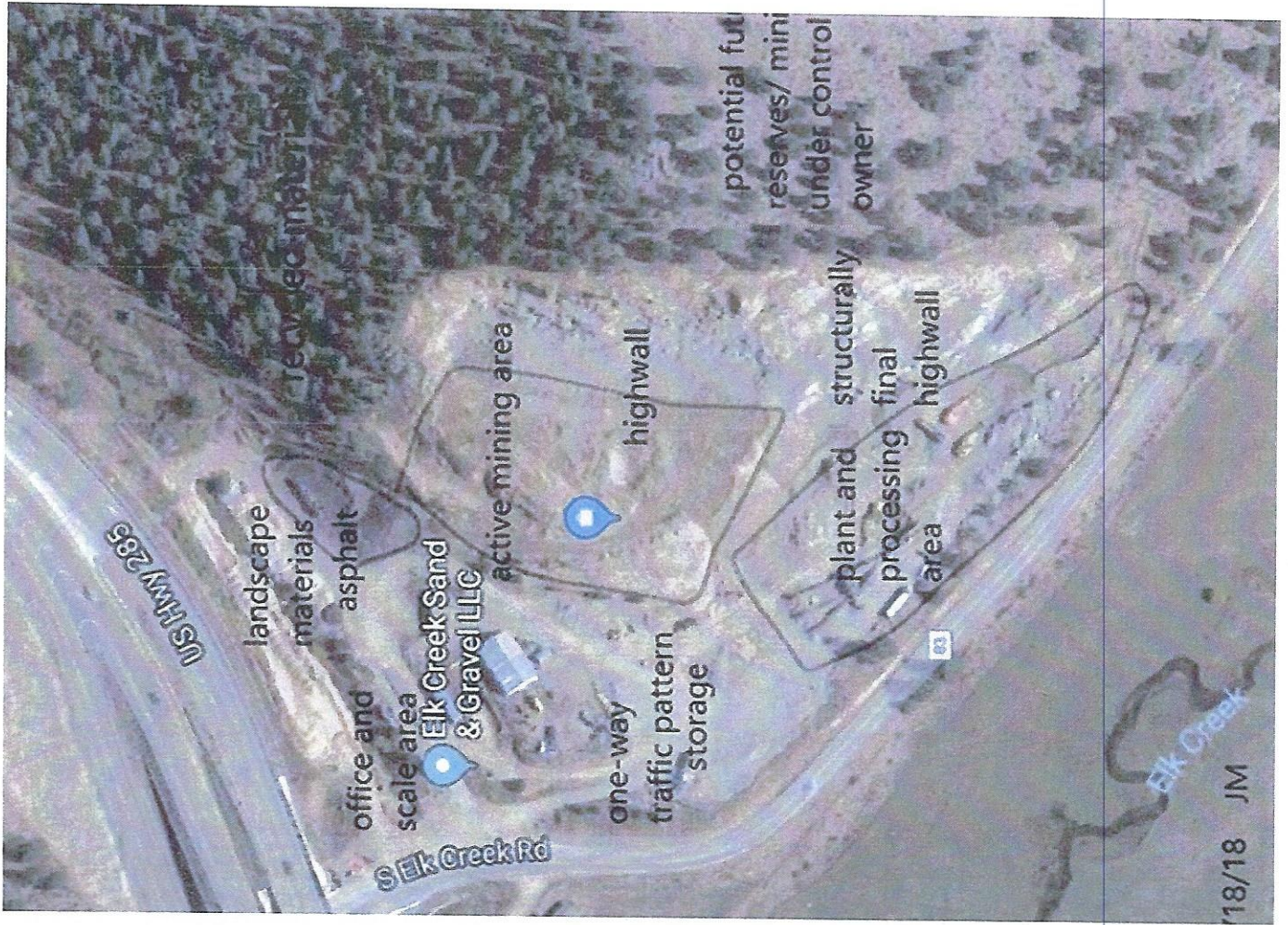
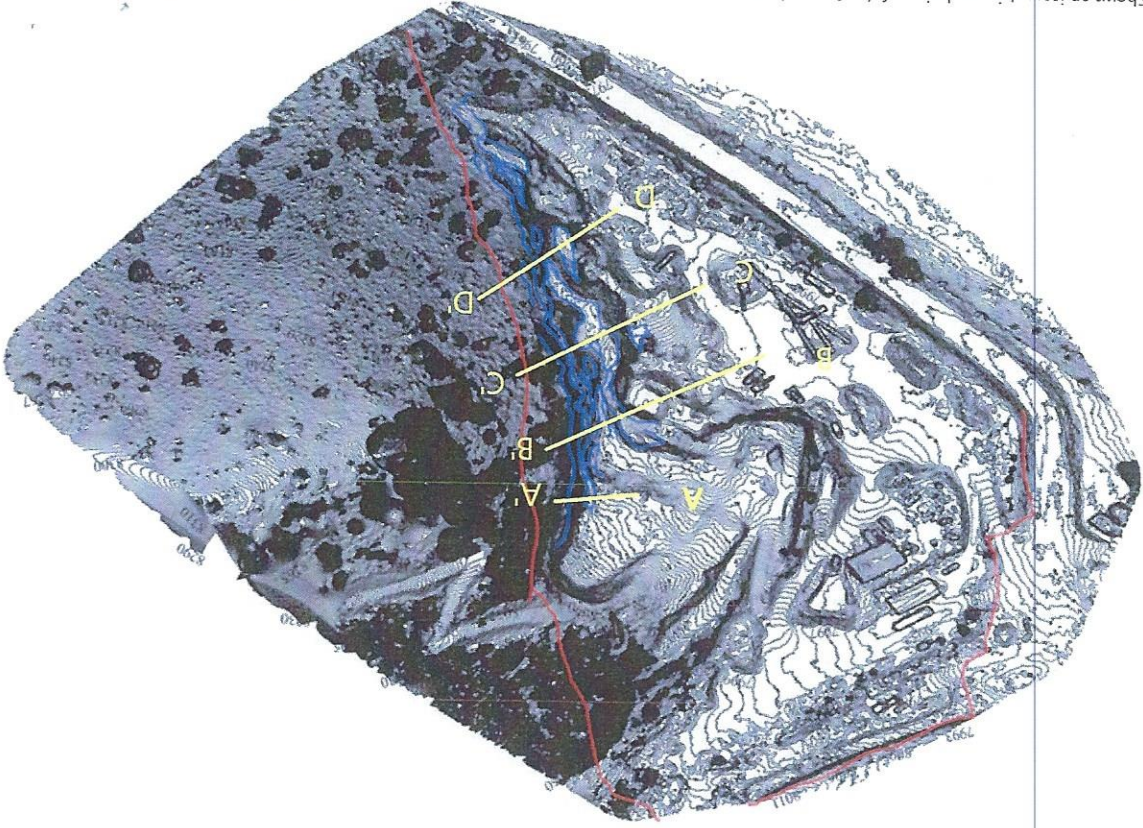
Composite picture depicting the general layout of proposed reclamation including the processing areas, aggregates storage areas, office, scale, access, typical relief and highwall configuration superimposed on a 2005 picture of the property as the current operator found it when they moved in. This property was being excavated for construction fill by a previous operator and was not in compliance with State Regulations. The current operator has amended stability concerns with the highwall providing state of the art engineered solutions to the issues presented, resolved drainage and other considerations, provided valuable habitat and engaged in sound mining practices together with currently accepted BMPs for erosion control and is in full compliance with all State regulations and requirements.

Elk Creeks' Shaffers Crossing location now yields some of the purest high quality crushed aggregate anywhere in the State of Colorado in conjunction with best safety practices and has been the recipient of the Small Mines Sentinels of Safety Award some 10 years contiguously at this time.

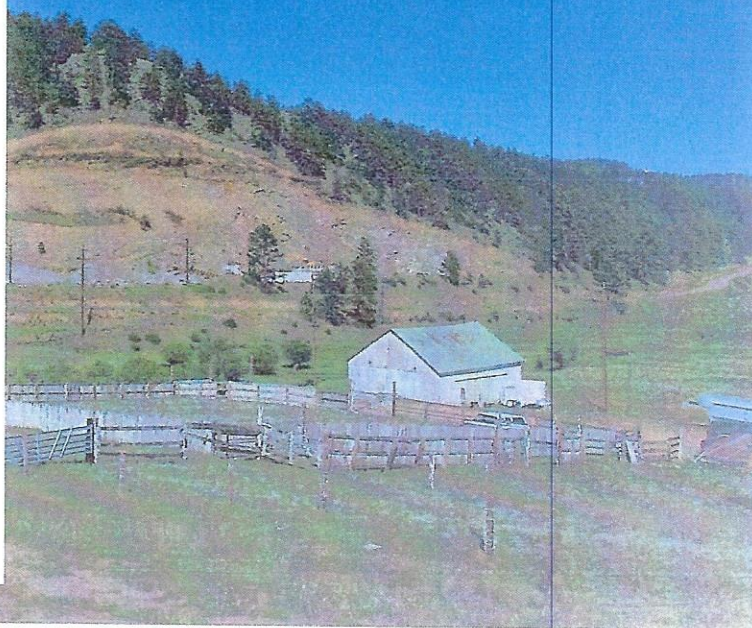
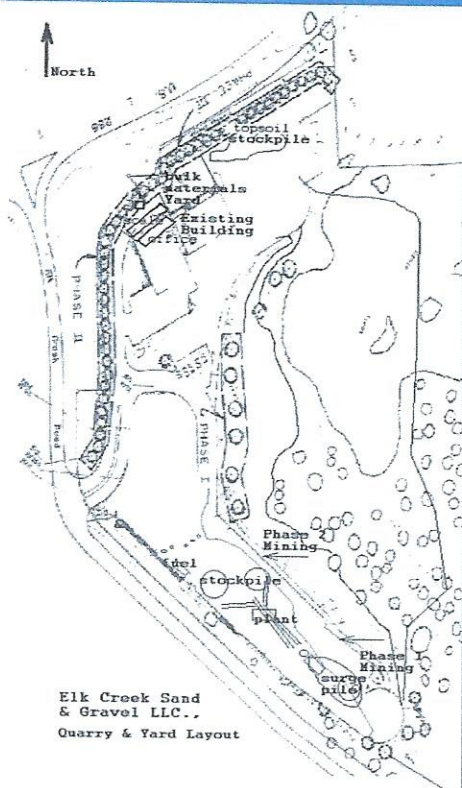
Elk Creek has resolved to be a steward to the community in providing a safe, reliable source of aggregates and a responsible environmentally meaningful mining method for extraction. We are a proud partner collaborating in responsible resource development throughout the 285 Community and the Front Range.



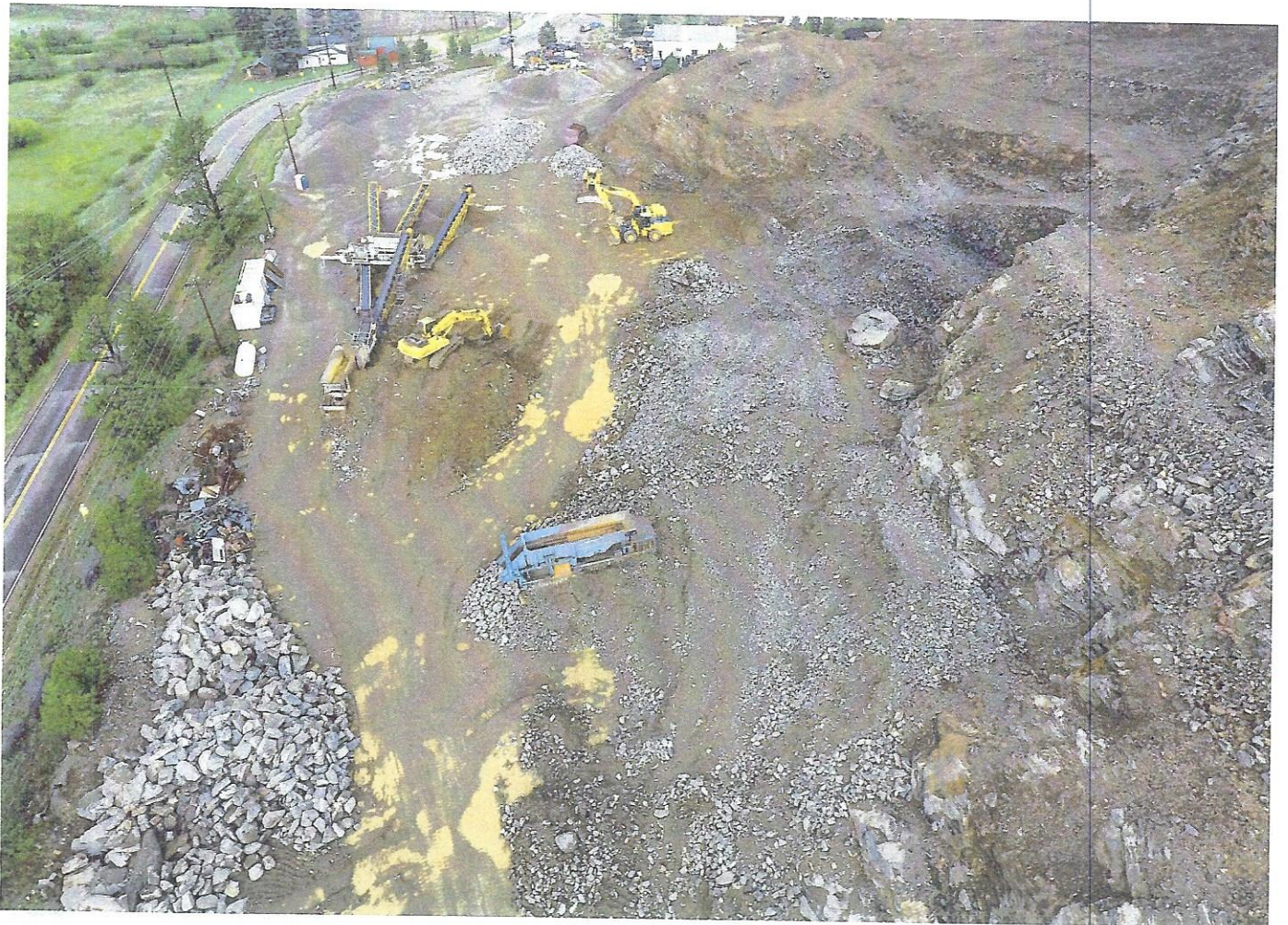
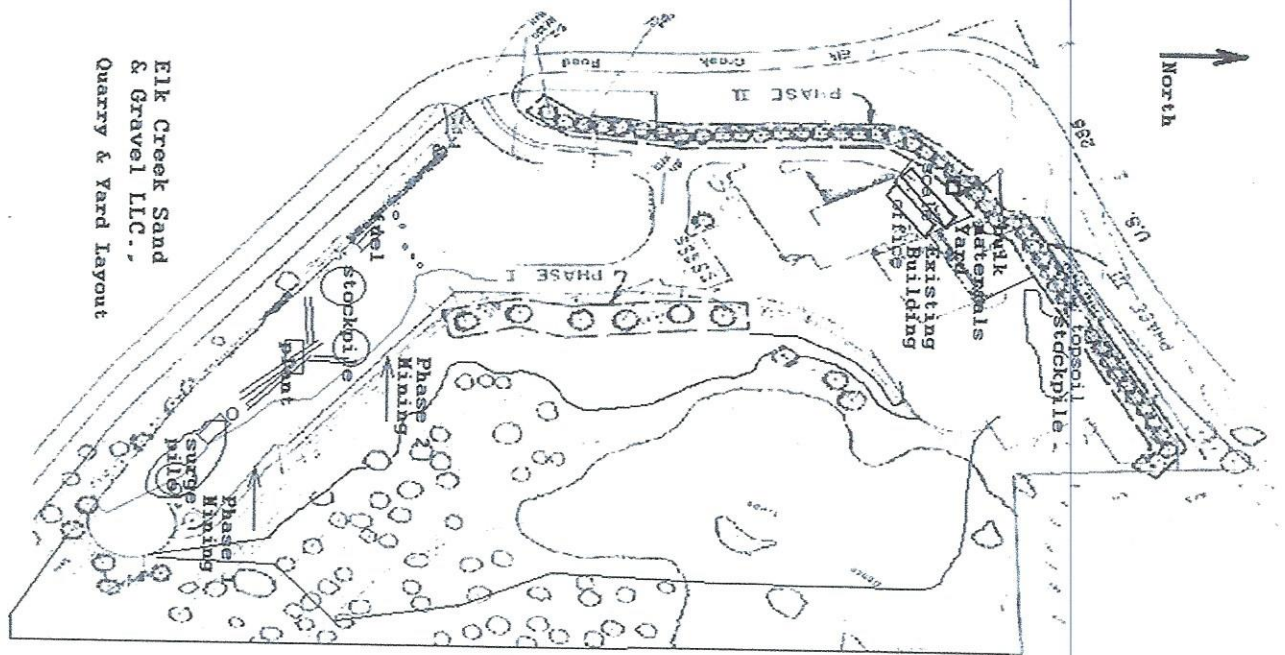
Fig. 2. Shows an isometric rendering of the Quarry indicating contours (5ft intervals) and demonstrating the defined benches (bl established from the top of highwall and declining. These indicate bench patterns fall within the prescribed configuration as ap permitted and on file with DRMS (2006). Mining is partly complete and thus bench configuration is not final. Pit perimeter ind



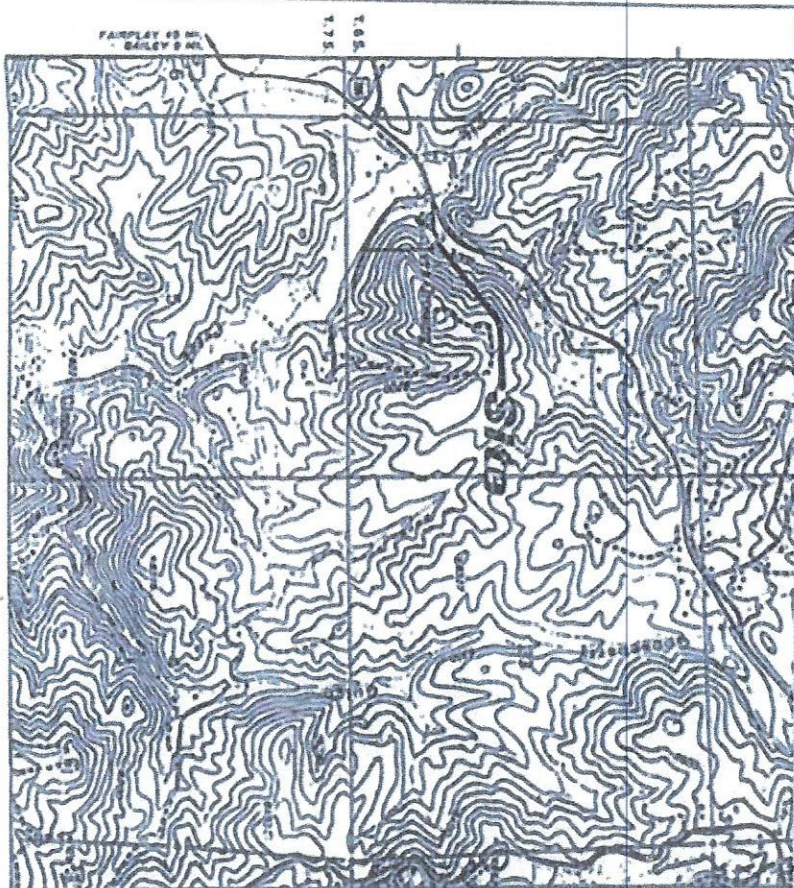
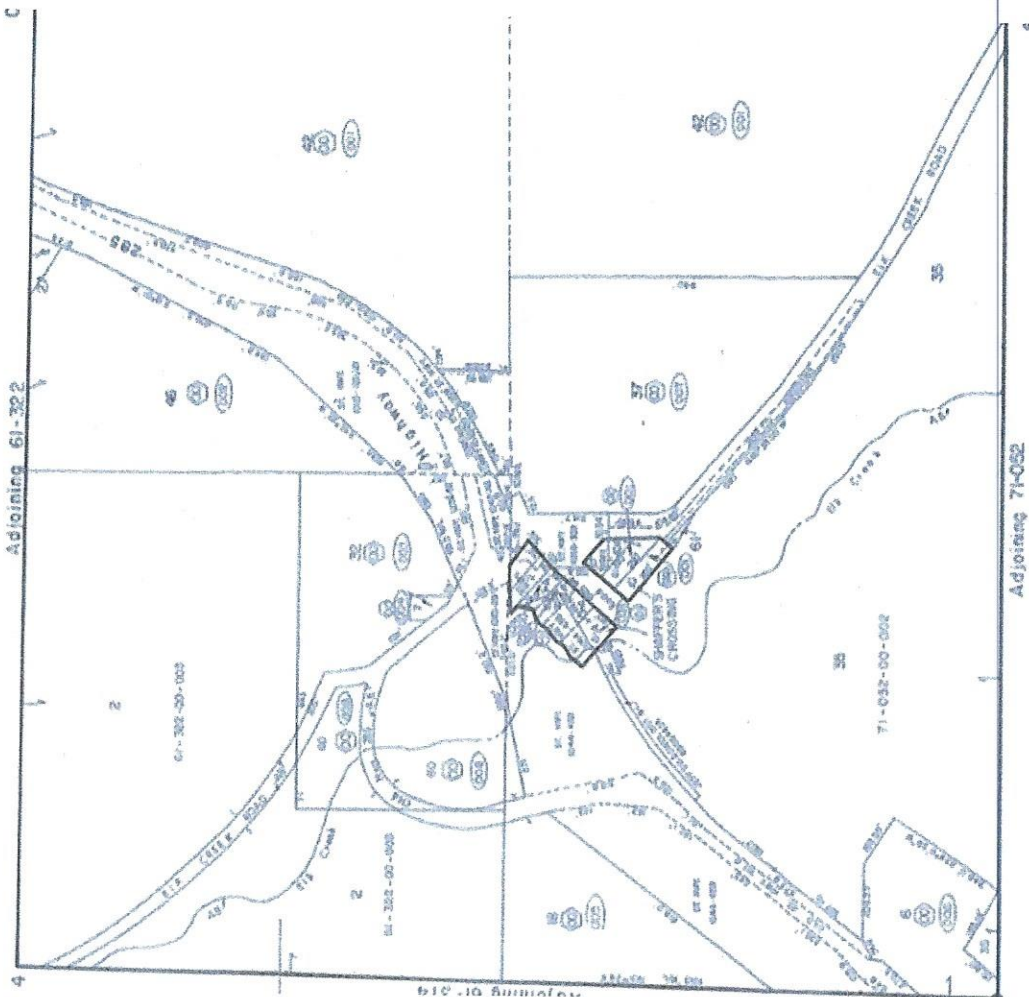












VICINITY MAP

Scale: 1" = 2000'

FIGURE 1

**MSJ** ENGINEERING  
SURVEYING

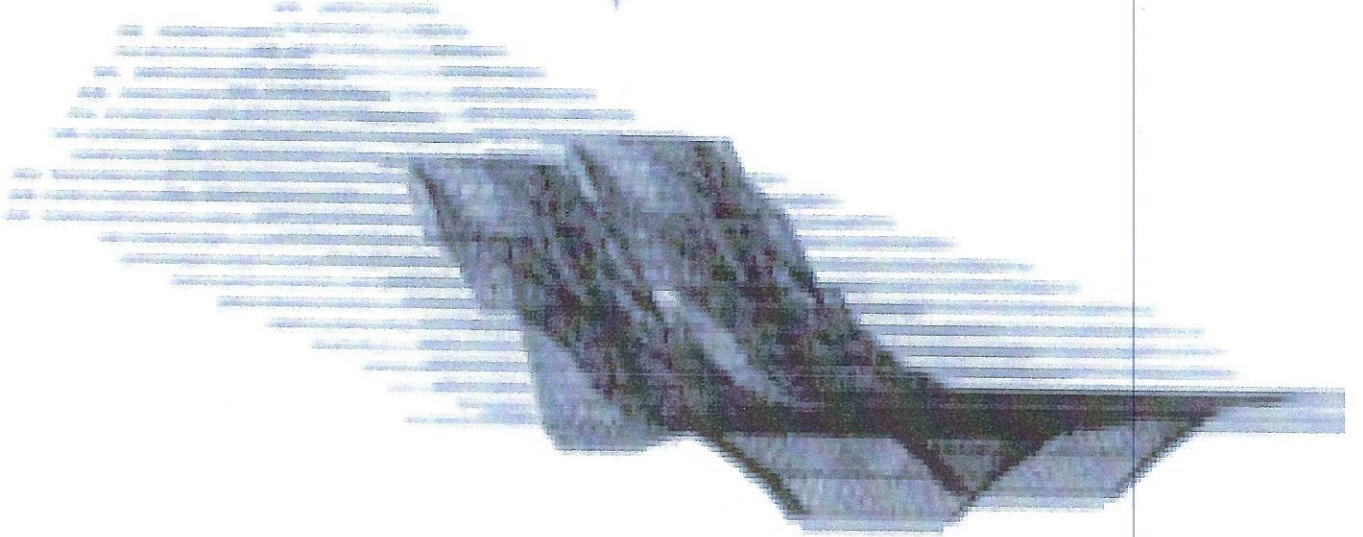
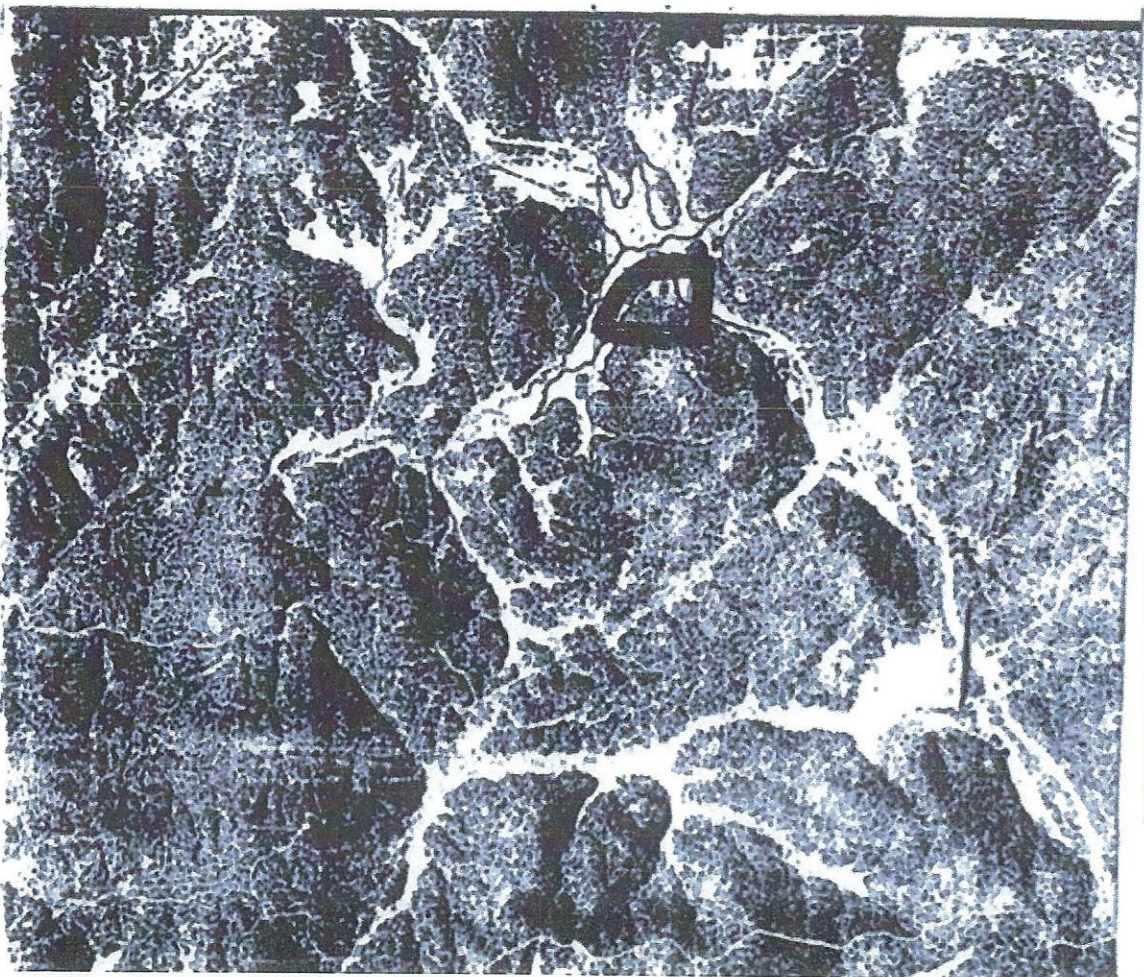
303.701-6142  
JOB NO. 626  
DATE 1/72





SOIL MAP

Owner Carl Johnson Agent Opentr. Eng. Venko & Josepho Engineering  
County Jefferson State Mo.  
Soil survey sheet (s) or code nos. 8-23  
Prepared by U. S. Department of Agriculture, Soil Conservation Service cooperating  
with Jefferson Soil Conservation District  
Approximate scale 1:24,000





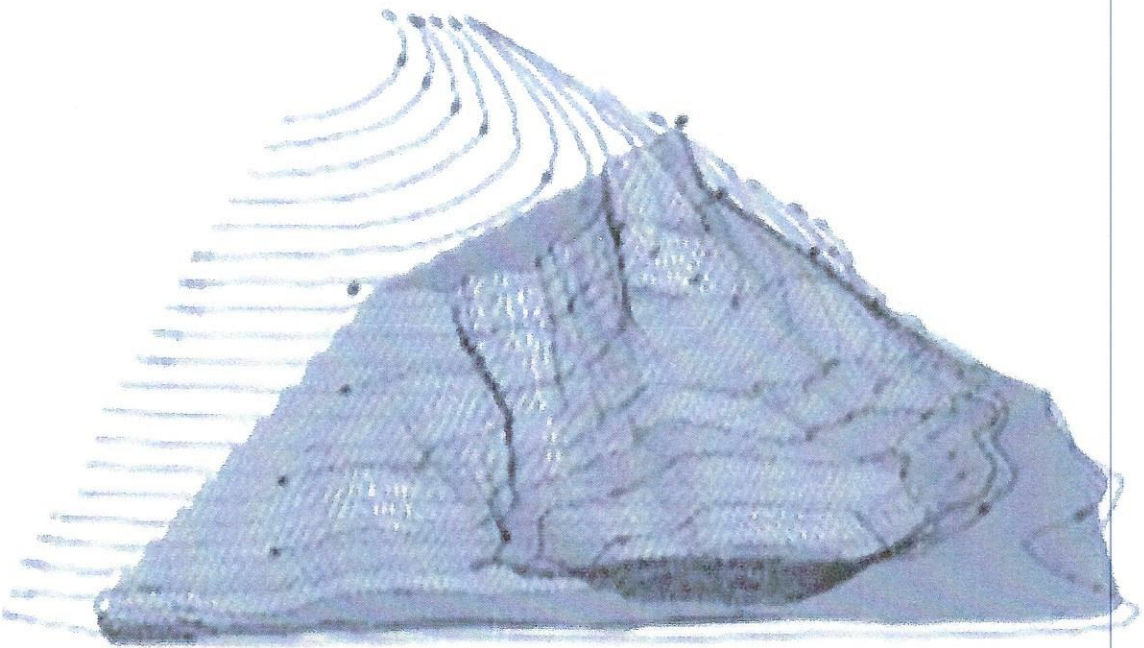
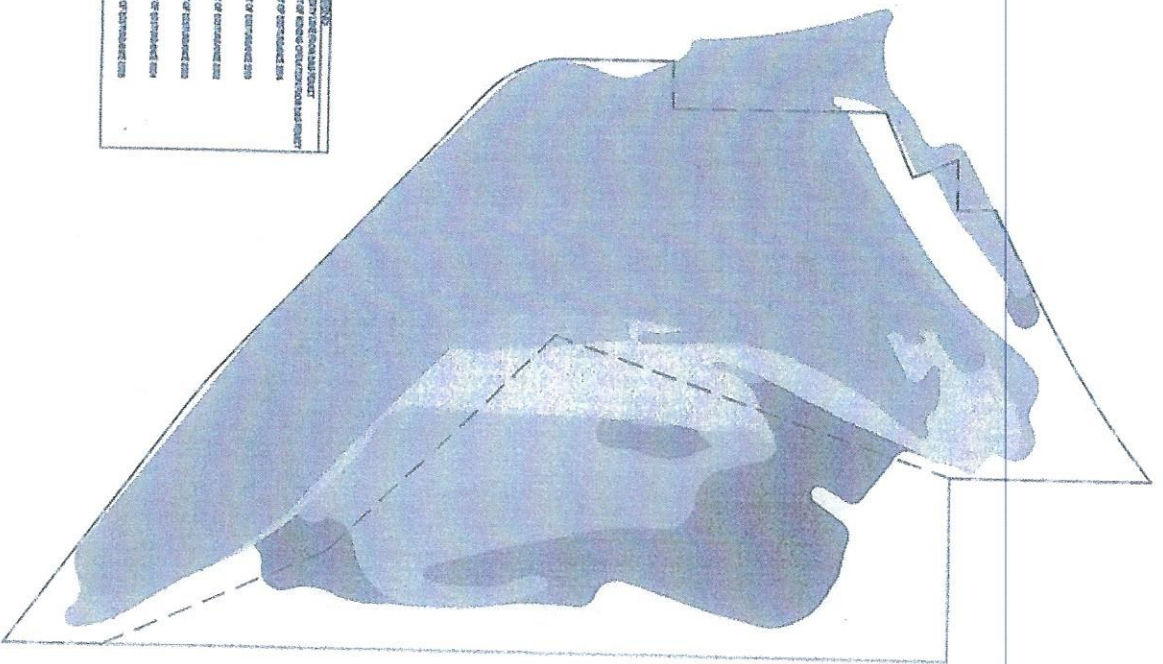
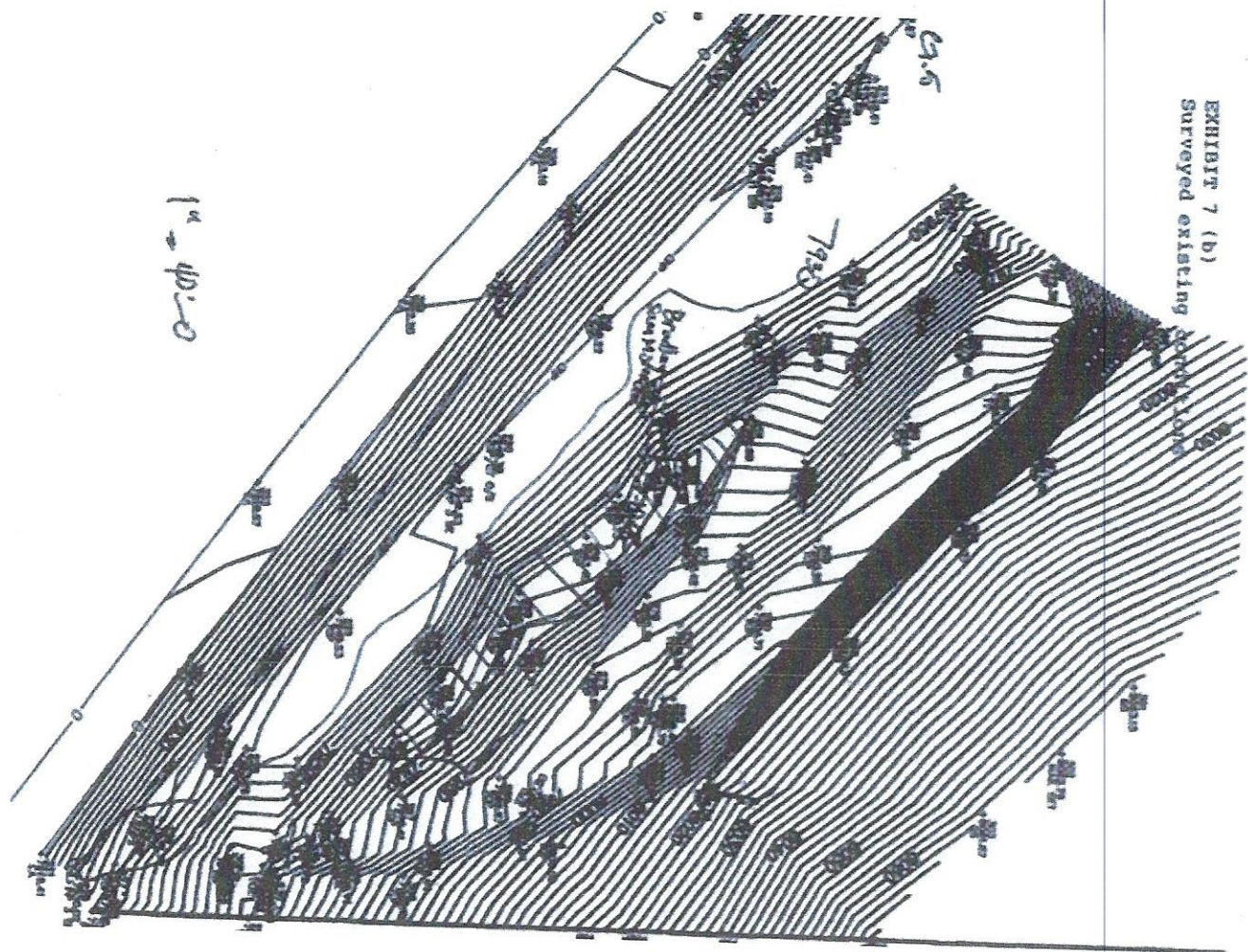




EXHIBIT 7 (b)  
 Surveyed existing conditions



PROPOSED REMOVAL PLAN  
 A PART OF THE SW 1/4 OF SECTION 32, T. 6 S., R. 71 W., 6TH P.M.  
 COUNTY OF JEFFERSON, COLORADO  
 ELK CREEK SAND AND GRAVEL

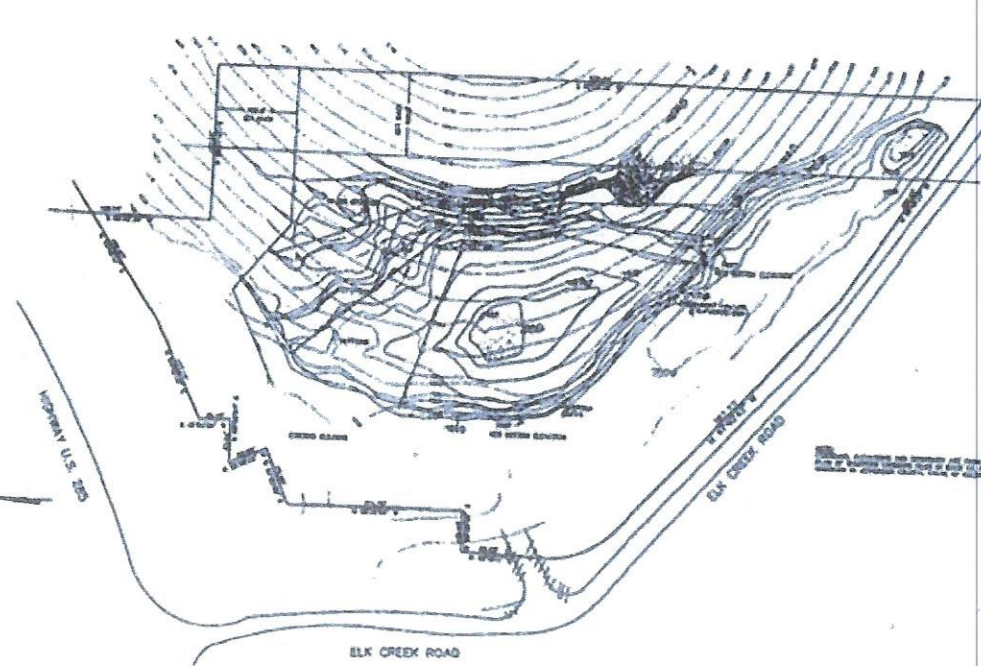


EXHIBIT 7 (a)  
 Site Plan: Scaled  
 Shows ODR, Removal & Reclamation





CASH ONLY IF ALL CHECKLOCK SECURITY FEATURES LISTED ON BACK INDICATE NO TAMPERING OR COPYING



**Elk Creek Sand & Gravel LLC.**

Shaffers Crossing Quarry  
PO Box 416  
Conifer, CO 80433  
(303) 816-4047

Evergreen National Bank  
EVERGREEN, COLORADO 80437  
(303) 674-2700  
82-386/1070

Permit # M1A78208  
Receipt # 29479

9/25/2019

PAY TO THE ORDER OF Colo Div. of Reclamation, Mining & Safety

Three Hundred Twenty-Three and 00/100 \*\*\*\*\* DOLLARS

\$ 323.00

Colo Div. of Reclamation, Mining & Safety  
1313 Sherman Street  
Denver, CO 80203

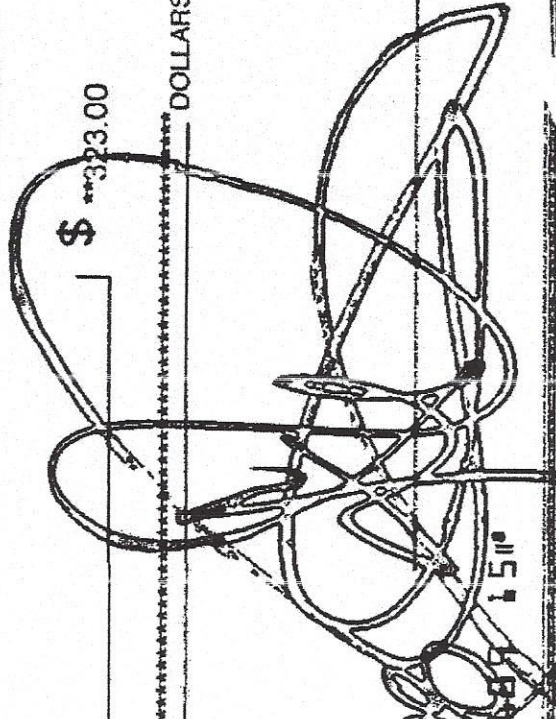
Annual Report Fee

M1A78208-2019

1102476711 11070038611 30

2019

SCANNED



Details on Back

Checklock Secure Check

PAY TO THE ORDER OF  
WELLS FARGO BANK, N.A.  
FOR DEPOSIT ONLY  
DIVISION OPERATING ACCOUNT  
MINING TREASURY  
4120280912

ELECTRONICALLY PRESENTED - 10/23/2019 0000000072

SCANNED





CASH ONLY IF A L CheckLock™ SECURITY FEATURES LISTED ON BACK INDICATE NO TAMPERING OR COPYING



**Elk Creek Sand & Gravel LLC**  
Shaffers Crossing Quarry  
PO Box 416  
Conifer, CO 80433  
(303) 816-4047

Permit # **M1978208**  
Receipt # **29478**

Evergreen National Bank  
EVERGREEN, COLORADO 80437  
(303) 674-2700  
82-386/1070

**8024763**

9/25/2019

PAY TO THE ORDER OF **Colo Div. of Reclamation, Mining & Safety**

\$ **323.00**

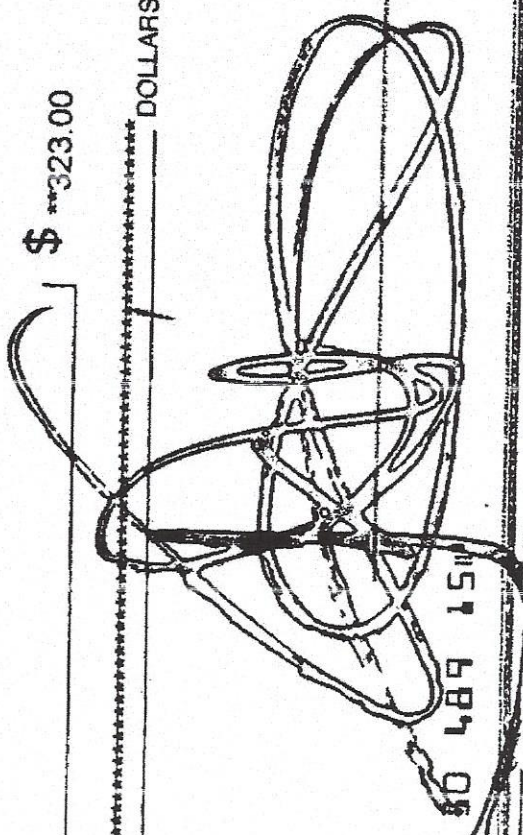
**Three Hundred Twenty-Three and 00/100** \*\*\*\*\* DOLLARS

**Colo Div. of Reclamation, Mining & Safety**  
1313 Sherman Street  
Denver, CO 80203

Penalties Fees Permit No. **M-1978-208** Elk Creek S

⑈024768⑈ ⑆10700386⑆

30 489 15⑈



SCANNED



ELECTRONICALLY PRESENTED - 10/23/2019 000000042

PAY TO THE ORDER OF,  
WELLS FARGO BANK (N.A.)  
FOR DEPOSIT ONLY  
OPERATING ACCOUNT  
DIVISION TREASURY  
4120280912  
MINING & SAFETY

SCANNED

