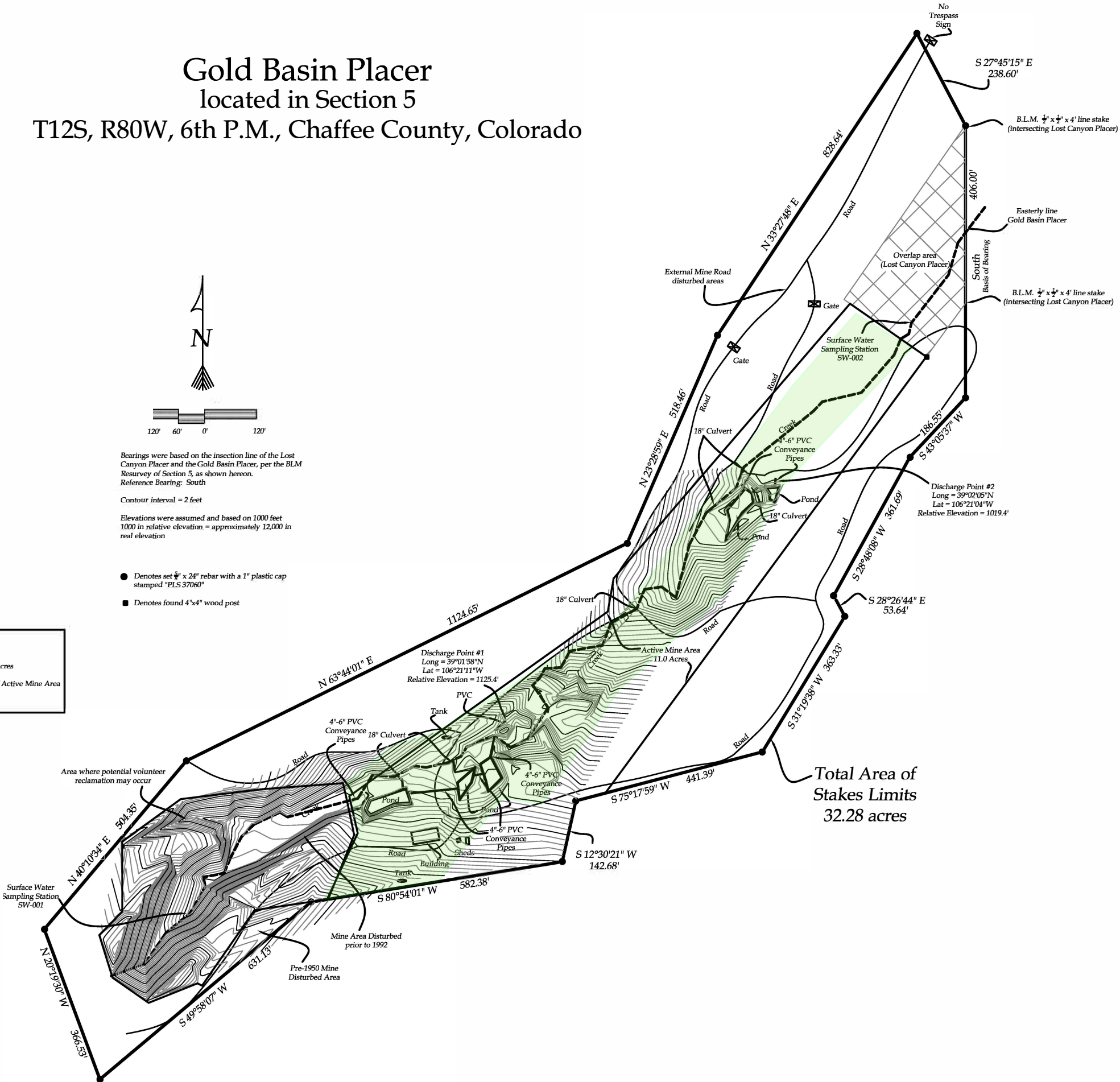


Gold Basin Placer
located in Section 5
T12S, R80W, 6th P.M., Chaffee County, Colorado



Acreage Summary
Total Permit Area = 32.3 acres
Pre-1950 Disturbed Area = 3.8 acres
Active Mine Area = 11.0 acres
External Mine Roads outside of Active Mine Area
(50 foot buffer) = 3.7 acres

Mountain Man Surveying 2855 North Main, Suite B106 Durango, Co. 81301 Phone: 970-375-6358 Fax: 970-259-3147 Cell: 970-946-1886	Gold Basin Placer located in Section 5 T12S, R80W, 6th P.M., Chaffee County, Colorado	
	Prepared By: J.E.M.	Project No: 14373
	Checked By: J.E.M.	Date: 10-31-14
	Page 1 of 1	