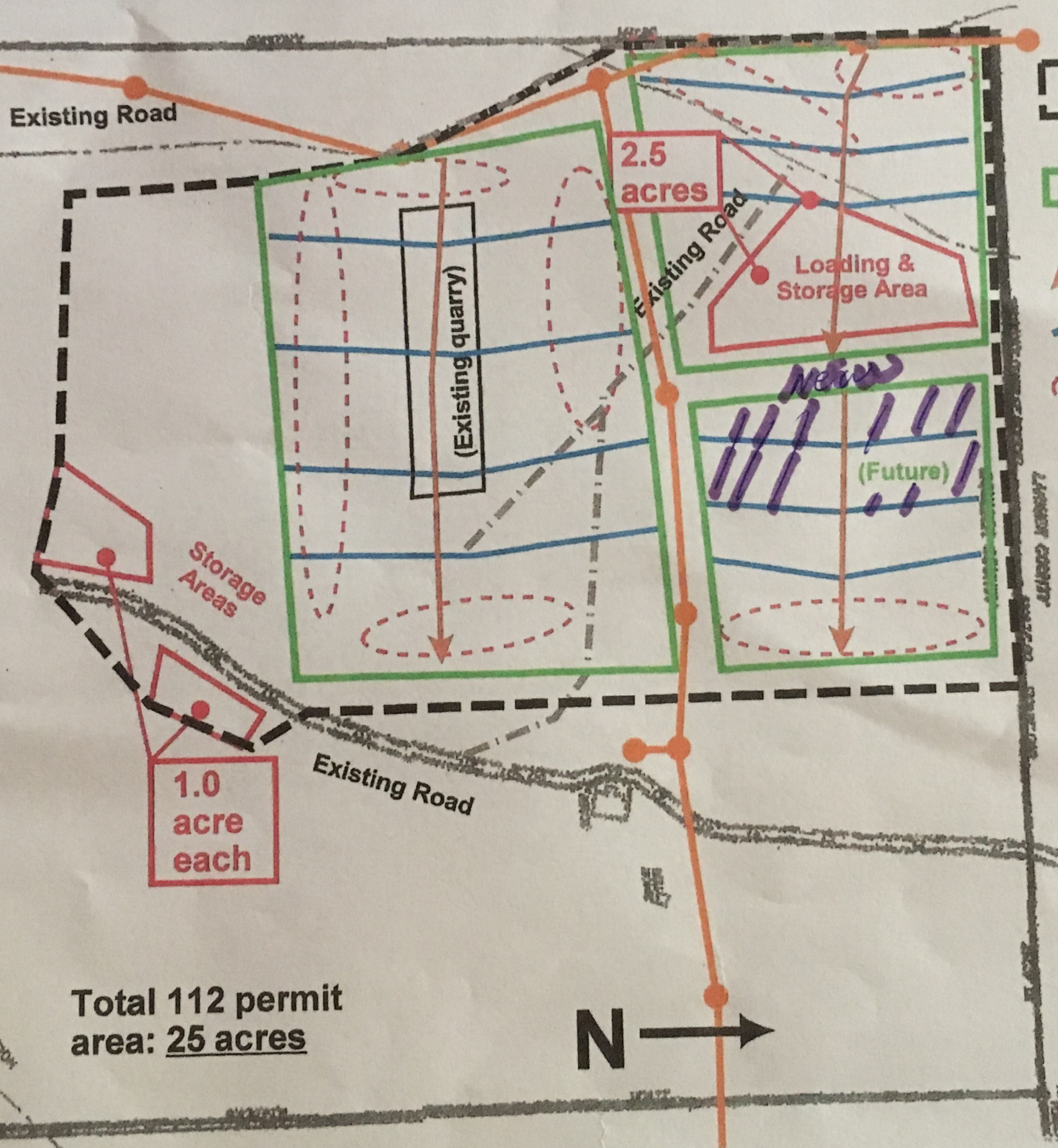


T-Bone Stone, Inc., Reclamation Plan Map (M-2004-030)

(showing requested adjustment of TBS Quarry Permit boundaries for 112 permit application)

The first 12 inches of soil consists of very stony loamy fine sand (see Exhibit B). Because this material is primarily rock and sand, it does not support significant vegetation. The intended future use for the area is rangeland, which will be reestablished by revegetating with a mix of native grasses and by planting native Ponderosa Pine tree seeds @ ten trees per acre, plus Rocky Mountain Juniper shrubs @ five per acre. Existing stored overburden will be sifted with a grizzly machine at time of reclamation to collect topsoil. Top soil over new quarry areas will be scraped and stored for future use.



- Total Affected area: 25.0 acres
- Areas of existing & future excavation & benches
- Direction of slope
- Approximate alignment for benches
- Storage of rock waste and overburden
- REA Utility lines and poles

Replacement of overburden will be conducted on an ongoing basis, where practicable, as part of normal quarry operations. Estimated depths will vary between 1ft and 20 ft. In order to maintain the desired 3:1 slope upon final reclamation.

The slope of the proposed site currently ranges from 5% to 55% (Non-Technical Soil Description, Exhibit B). Gradient used for reclaimed slopes will be 3:1 where the original slopes support it. Gradients of greater than 3:1 will be used only in areas where the original slopes are in excess of 3:1, never to exceed the original slope maximum gradient of 55%. The intent is to return the slopes to their approximate original gradient, and leave no more than 100 linear feet of rock benches 5-8' high only where they may be necessary and appropriate to promote slope stabilization and enhance safe passage for wildlife traveling through the reclaimed quarry area in the future.

Total 112 permit area: 25 acres

Scale: 1" = 240.63'