



Bureau of Land Management Colorado River Valley Field Office Minerals Inspection Report

General Information	
Date	11/6/2019
Project Name	Rifle Quarry
Operator	Colorado Lien Company
Serial Number	COC-077876
Project Classification	Plan of Operations
Project Location	T4S R92W Sec15, Garfield County
Inspection Purpose	Reclamation site inspection
Time Period Onsite	1 hour
Attendees	Jessica Lopez Pearce, BLM Geologist (report author)

New Remarks

On October 21, 2019, I was notified by Clint Beck, Environmental Coordinator for Pete Lien & Sons, Inc., that the BLM-required corrective actions from the September 9, 2019 inspection report had been addressed. Clint Beck stated that on September 9, 2019 Pete Lien & Sons, Inc. had manually removed weeds, cleaned out BMPs, moved a BMP over to catch sediment that was migrating to lower sections, conducted intermediate scarification of the access road to allow for further vegetation, and added some approved seed mix before the moisture event on September 10.

On November 6, 2019, I inspected the Rifle Quarry to check on the implemented corrective actions within the remaining 1.65 permitted acres and ensure compliance with the Final Reclamation Plan (which was authorized July 1, 2016). The weather was clear and sunny with temperatures in the low 50's.

I observed the access road blocked with boulders per the Final Reclamation Plan. Areas of previously compacted soil along the access road that had been roughened and scarified with equipment. There was evidence of approved alternative growth media and mulching material (a combination of fish emulsion solids, spent grain solids, spent potato mash solids, mulch, and topsoil) on the surface of the road. The eastern access ramp to the quarry floor had also been scarified.

Within the quarry floor, Pete Lien & Sons, Inc. had also performed weed eradication, site stabilization, and erosion control. The eastern slope, the quarry floor, the northern upper access bench, as well as most of the remaining quarry area contained alternative growth media and mulching material. Most of the vegetation in the main quarry area was dried and brown. There was seed scattered on the growth media and snow. I did not observe any of the previously growing invasive species which included mullein and Bull thistle. BLM received the Pesticide Use Proposal from Pete Lien & Sons, Inc. on October 11, 2019 and are currently processing the proposal. Per the Final Reclamation Plan, there were five 24" tall sediment control windrows running perpendicular to the west-to-east gradient on the quarry floor. Some had been stabilized and elongated. In addition, one new feature, a trench lined with rip-rap, was constructed on the western side of the quarry floor. Previous evidence of gullying and erosion in channels had been removed by equipment and the western side of the quarry floor had been scarified. Future inspections will monitor the sediment control and revegetation within the reclaimed area.



Bureau of Land Management Colorado River Valley Field Office Minerals Inspection Report

Recommended Changes to Operations or Corrective Actions Needed

- None at this time

Photo Summary



Photo 1: Wheel ruts in the reclaimed access road were recently scarified to promote revegetation.



Bureau of Land Management Colorado River Valley Field Office Minerals Inspection Report



Photo 2: Looking west to the quarry floor. Sediment berms were stabilized and elongated to prevent erosion.

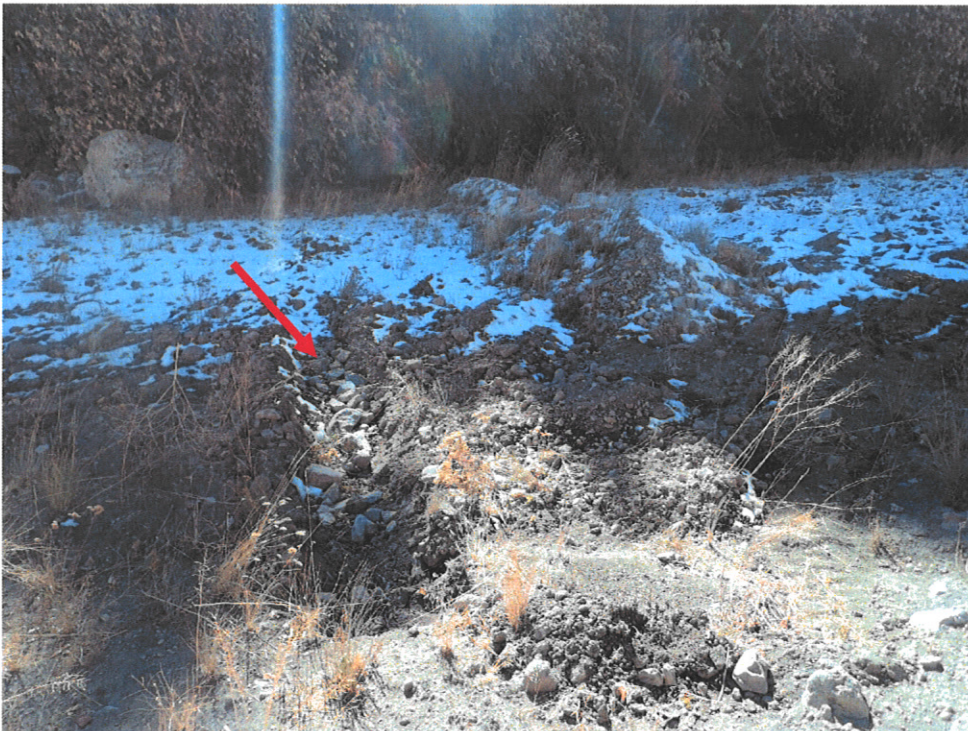


Photo 3: Looking south to the westernmost stormwater BMPs. The new rip-rap lined trench is on the left side of the photo (indicated by red arrow).



**Bureau of Land Management
Colorado River Valley Field Office
Minerals Inspection Report**



Photo 4. Looking east to the scarified quarry floor under snow.

Manager Review: _____

Date: _____

12/8/19