

RECLAMATION EXHIBIT

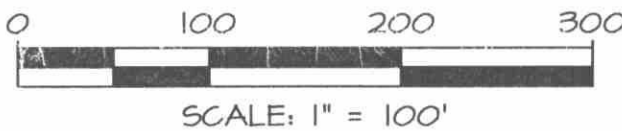
ROAD AND BRIDGES DEPARTMENT  
GRAVEL PIT

PART OF SECTION 27, T9S, R64W, OF THE 6TH P.M.  
COUNTY OF ELBERT, COLORADO

RECEIVED

JUL 11 2007

Division of Reclamation,  
Mining and Safety



LEGEND

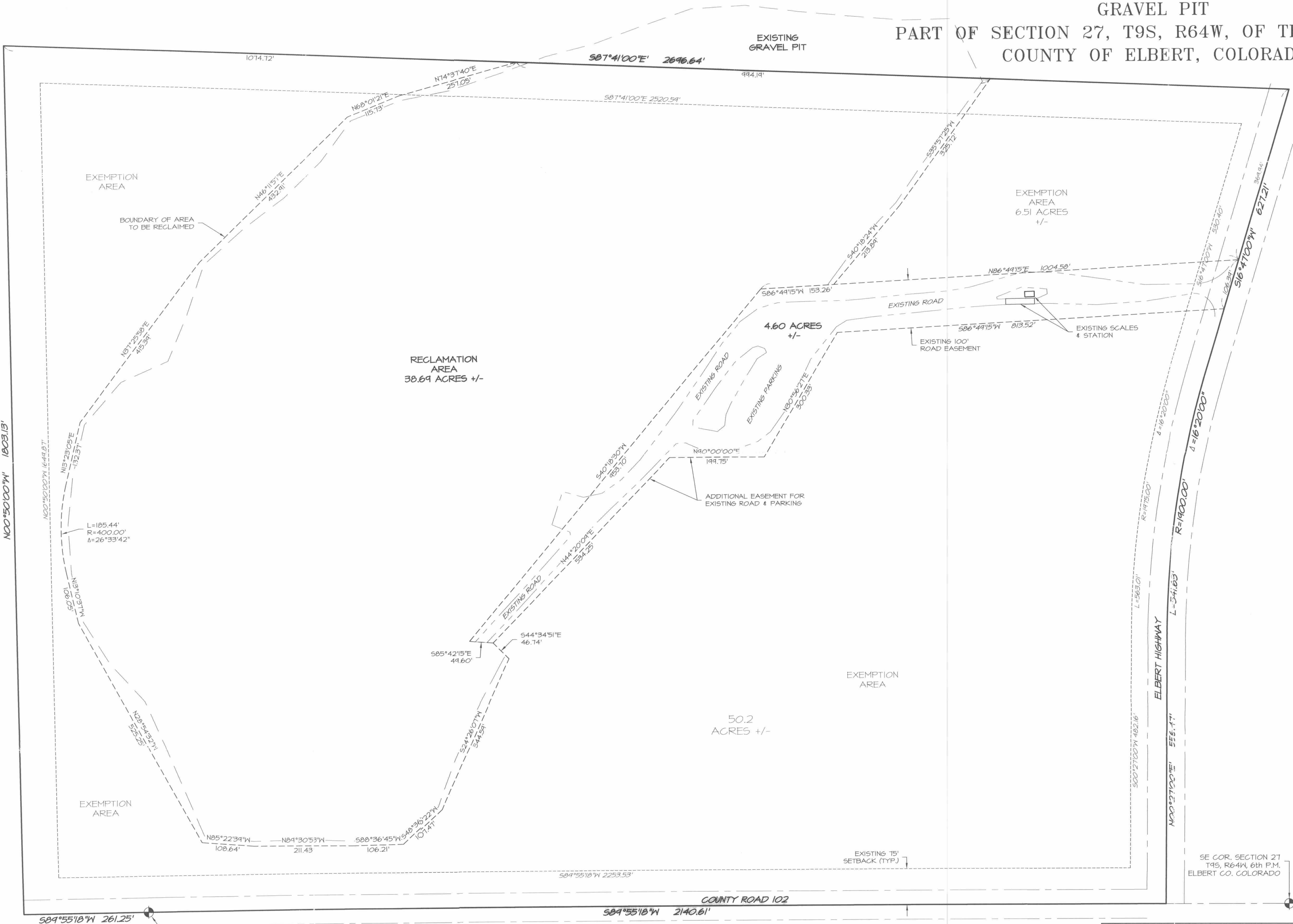
- SITE BOUNDARY
- EXISTING ROAD EASEMENT 4' 15' SETBACK
- ROAD EASEMENTS
- EXISTING GRAVEL ROAD & PARKING AREA
- PROPOSED EASEMENTS
- SURVEYED EXTENTS OF EXISTING GRAVEL PIT
- SECTION MONUMENT

BOUNDARY OF AREA TO BE RECLAIMED

A PARCEL OF PROPERTY LOCATED IN THE SOUTH 1/2 OF SECTION 27, T9S, R64W, 6th P.M. ELBERT COUNTY, COLORADO BEING MORE PARTICULARLY DESCRIBED AS FOLLOWS; COMMENCING AT THE SOUTH 1/4 CORNER OF SAID SECTION 27 AND CONSIDERING THE SOUTH LINE OF SAID SECTION 27 TO BEAR S89°55'18"W, WITH ALL BEARING CONTAINED HEREIN RELATIVE THERETO; THENCE S89°55'18"W, ALONG SAID SOUTH LINE A DISTANCE OF 261.25 FEET; THENCE N00°50'00"W A DISTANCE OF 1803.13 FEET; THENCE S 87°41'00" E A DISTANCE OF 1074.72 FEET TO THE POINT OF BEGINNING; THENCE S 87°41'00" E A DISTANCE OF 944.14 FEET; THENCE S 35°57'25" W A DISTANCE OF 325.72 FEET; THENCE S 40°18'24" W A DISTANCE OF 213.84 FEET TO A POINT ON THE NORTHERLY LINE OF THE EXISTING ROAD EASEMENT; THENCE S 86°44'15" W A DISTANCE OF 153.26 FEET; THENCE S 40°18'30" W A DISTANCE OF 453.10 FEET; THENCE S 85°42'15" E A DISTANCE OF 44.60 FEET; THENCE S 44°34'51" E A DISTANCE OF 46.74 FEET; THENCE S 24°26'07" W A DISTANCE OF 344.54 FEET; THENCE S 48°36'22" W A DISTANCE OF 107.47 FEET; THENCE S 88°36'45" W A DISTANCE OF 106.21 FEET; THENCE N 89°30'53" W A DISTANCE OF 211.43 FEET; THENCE N 85°22'34" W A DISTANCE OF 108.64 FEET; THENCE N 28°54'32" W A DISTANCE OF 525.25 FEET; THENCE N 13°10'31" W A DISTANCE OF 106.05 FEET; THENCE ALONG THE ARC OF A CURVE TO THE RIGHT WHOSE RADIUS POINT BEARS N 76°44'23" E, HAVING A RADIUS OF 400.00 FEET, A CENTRAL ANGLE OF 26°33'42" AND AN ARC LENGTH OF 185.44 FEET; THENCE N 13°23'05" E A DISTANCE OF 132.37 FEET; THENCE N 37°25'58" E A DISTANCE OF 415.34 FEET; THENCE N 46°11'51" E A DISTANCE OF 432.41 FEET; THENCE N 68°01'21" E A DISTANCE OF 115.13 FEET; THENCE N 74°37'14" E A DISTANCE OF 251.05 FEET TO THE POINT OF BEGINNING; CONTAINING AN AREA OF 1,685,453 SQUARE FEET OR 38.64 ACRES, +/-

ROAD/PARKING EASEMENT

A PARCEL OF PROPERTY LOCATED IN THE SOUTH 1/2 OF SECTION 27, T9S, R64W, 6th P.M. ELBERT COUNTY, COLORADO BEING MORE PARTICULARLY DESCRIBED AS FOLLOWS; COMMENCING AT THE SOUTH 1/4 CORNER OF SAID SECTION 27 TO BEAR S89°55'18"W, WITH ALL BEARING CONTAINED HEREIN RELATIVE THERETO; THENCE S89°55'18"W, ALONG SAID SOUTH LINE A DISTANCE OF 261.25 FEET; THENCE N00°50'00"W A DISTANCE OF 1803.13 FEET; THENCE S 87°41'00" E A DISTANCE OF 1074.72 FEET TO THE POINT OF BEGINNING; THENCE S 87°41'00" E A DISTANCE OF 944.14 FEET; THENCE S 35°57'25" W A DISTANCE OF 325.72 FEET; THENCE S 40°18'24" W A DISTANCE OF 213.84 FEET TO A POINT ON THE NORTHERLY LINE OF THE EXISTING ROAD EASEMENT; THENCE S 86°44'15" W A DISTANCE OF 153.26 FEET; THENCE S 40°18'30" W A DISTANCE OF 453.10 FEET; THENCE S 85°42'15" E A DISTANCE OF 44.60 FEET; THENCE S 44°34'51" E A DISTANCE OF 46.74 FEET; THENCE S 24°26'07" W A DISTANCE OF 344.54 FEET; THENCE S 48°36'22" W A DISTANCE OF 107.47 FEET; THENCE S 88°36'45" W A DISTANCE OF 106.21 FEET; THENCE N 89°30'53" W A DISTANCE OF 211.43 FEET; THENCE N 85°22'34" W A DISTANCE OF 108.64 FEET; THENCE N 28°54'32" W A DISTANCE OF 525.25 FEET; THENCE N 13°10'31" W A DISTANCE OF 106.05 FEET; THENCE ALONG THE ARC OF A CURVE TO THE RIGHT WHOSE RADIUS POINT BEARS N 76°44'23" E, HAVING A RADIUS OF 400.00 FEET, A CENTRAL ANGLE OF 26°33'42" AND AN ARC LENGTH OF 185.44 FEET; THENCE N 13°23'05" E A DISTANCE OF 132.37 FEET; THENCE N 37°25'58" E A DISTANCE OF 415.34 FEET; THENCE N 46°11'51" E A DISTANCE OF 432.41 FEET; THENCE N 68°01'21" E A DISTANCE OF 115.13 FEET; THENCE N 74°37'14" E A DISTANCE OF 251.05 FEET TO THE POINT OF BEGINNING; CONTAINING AN AREA OF 1,685,453 SQUARE FEET OR 38.64 ACRES, +/-



High Plains Survey Co.

LAND SURVEYING • CONSTRUCTION STAKING

LAND DEVELOPMENT CONSULTING

303-621-8672 FAX:303-621-8673

345 COMANCHE, P.O. BOX 773  
KIOWA, COLORADO 80117

SCALE  
1" = 100'

DATE  
06/11/07

DRAWN BY  
ELY

TITLE  
RECLAMATION EXHIBIT  
ROAD AND BRIDGES DEPARTMENT  
GRAVEL PIT  
COUNTY OF ELBERT, COLORADO

CLIENT  
ELBERT COUNTY  
ROAD AND BRIDGES DEPARTMENT

SHEET 1 OF 1  
JOB NUMBER  
02114-RECLAMATION

REFERENCE DING  
02114-RECLAMATION

DATE	REVISIONS