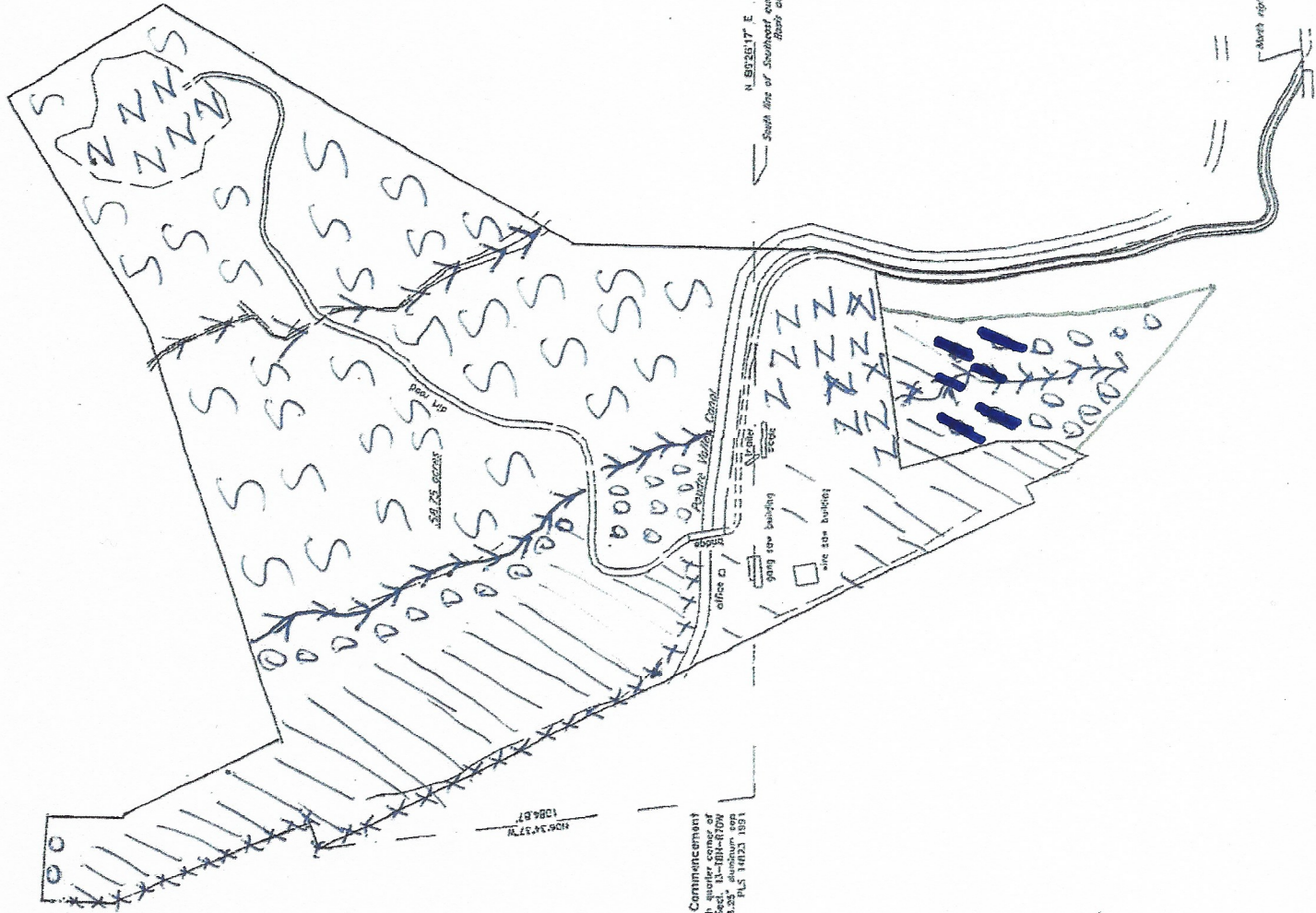


A portion of the Southeast quarter and the Southwest quarter of the Southeast quarter of Section 13 and the North half of the Northeast quarter of Section 24, Township 8 North, Range 70 West of the 6th PM, County of Larimer, State of Colorado



Southwest corner of Sect. 13-70N-87W
T8N R70W
P13 26535 1989

N 89°35'17" E 2650.61'
South line of Southeast quarter of Sect. 13-70N-87W
Base of Section

Point of Commencement
South quarter corner of Sect. 13-70N-87W
Base and A 3.25' 10000 1989

Scale 1 inch = 200 feet



Notes:
- Bearings are based on the South line of the Southeast quarter of Section 13 and the North half of the Northeast quarter of Section 24, Township 8 North, Range 70 West of the 6th PM, County of Larimer, State of Colorado.
- Grant distances are shown on this plat. To convert to grid distances multiply by a combined scale factor of 0.9997240.
- The monumentation shown on this plat is for informational purposes only. It is possible that the monumentation shown on this plat may not be the same as the monumentation shown on the ground.
- No warranty is made by the surveyor as to the accuracy of the monumentation shown on this plat.
- The monumentation shown on this plat is for informational purposes only.

DISTURBED
PULLED BY HAND
ALONG HALL ROADS

North right-of-way line