



L.G. EVERIST, INC.

ROCK SOLID SINCE 1876

7321 E. 88TH AVENUE, SUITE 200

HENDERSON, COLORADO 80640

PHONE 303-287-9606 • FAX 303-289-1348

August 4, 2019

Division of Reclamation, Mining and Safety
1313 Sherman Street, Room 215
Denver, CO 80203

RE: DRMS Annual Fee and Report for M-1996-052, Firestone Gravel Resource
Permittee Name: L.G. Everist, Inc.
Anniversary: August 4

Dear Division:

The DRMS Annual Report for Firestone Gravel Resource, DRMS Permit # M-1996-052, has been submitted online. The annual fee has been paid online with a credit card.

Included with this letter are the attachments for the DRMS Annual Report. They include a map which shows the various areas of mining and reclamation noted in the Annual Report. The mining map shows: active mining areas (mining), partially reclaimed areas (mining completed and sloping done), future mining areas (2019-2020), processing plant, settling ponds, and boneyard. It also shows the 2019 amendment area – the amendment should be finalized within the next month. The affected area remains mostly the same since the last annual report, with some expansion to the east.

We practice concurrent reclamation - after we mine out an area, we finish by building the compacted liner slopes. We continue our weed control and management with mowing and spraying throughout the growing seasons. We will be seeding newly reclaimed areas this fall and next spring.

Also attached is the Groundwater Monitoring Report with data and a monitoring well map. We are submitting the last year and a half of data, from January-2018 through June-2019. Analysis of the groundwater monitoring data shows that groundwater levels have remained in compliance. The only exterior well that went out of its baseline range was MW03. It was out of range 2 non-sequential months in 2018, but back in range the following months. This variance appears to be related to irrigation changes, since the Last Chance Ditch is located between the well and our mining area. The variances have not adversely affected neighbors. There are no compliance issues.

If you have questions, feel free to contact me at 303-286-2247, or lmshults@lgeverist.com.

Sincerely,

Lynn Mayer Shults
Regulatory Manager

Note: * shows structure agreements or surface use agreements for structures listed that are in the list.

WITHIN 200 FEET OF PERMIT AREA

WITHIN 200 FEET OF PERMIT AREA

Acord St Main Valley Ranch LLC*
Corops, wire fences, horse
barn, wood shed, garage

Harold E. & Lauren J. Nelson
(H & J Property LLC)
wire fences, 1-House

Joana Herra
three wire fence, Houses & Garage

Jacqueline Varras*
4, strand wire fence

Richard James & Johnny Edward Vogt
1 shed, fences, 1 water well

Terrence S & Lisa M Haley
house, garage, barn, 3-sheds, wire

Town of Freestone
Fences, Zernia & Holiday Streets

Weld County Commissioners
Cattle guards 19, 17 & 26.25

ROWS ON OR WITHIN 200 FEET

United Power
Powerlines around site

Century Link Communications
Telephone lines around site

Tri-State Generation & Transmission
Underground Powerline

Drestone Peak Resources LLC (AKA Kerr-McG
10-04/gas wells, 10-04 and Gas Flow
lines, 13-storage tanks, 10-gas separator,
1-4x4 shed

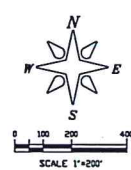
Shodor Pipeline Co.
2 - gaslines

Last Chance Ditch Company
2- Irrigation ditches (Last Chance,
Sidehill Ditch)

—

.....

—



	PERMIT LINE/AFFECTED LANDS		AMENDMENT AREA
	AREA LINE		PLANT SITE
	200 FOOT		LAKE
	DITCH		STRIPPED
	ROADS		BONE YARD
	PAVED ROAD		DRYING PAD / GROWTH MEDIUM STORAGE
	BURIED ELECTRIC		SETTLING POND
	OVERHEAD COMMUNICATIONS		PROPOSED SETTLING POND
	OVERHEAD ELECTRIC		
	FENCE		
	GASLINE		
	GAS/OIL WELL		
	DRAINAGE NELSON 247-32		
	BUILDING		
	TEMPORARY TOPSOIL PILE		
	ESTIMATED DIRECTION OF MINING		

Map Exhibit C - Current Conditions Map

DATE	DESCRIPTION	BY
1996	ORIGINAL POINT FILED	DMCS/SDS
1/7/2010	AMENDED TO ADD 274.0N AC 8	LOE/psm-1
8/21/2010	ADD FLOOD PLANE LINE	LOE/psm-1
3/1/2013	REMOVE FLOOD PLANE LINE	LOE/psm-1
1/29/2019	RECONSTRUCTION - ADD SETBACK POSTS	LOE/psm-1
3/18/2019	AMENDED TO ADD 2.0N AC 8	LOE/psm-1

DATE: 12/28/2009	FILE NAME: FOR-C-WAP
SCALE: 1"=200'	DRAWN BY: DNV/SLO
CHECKED BY: INITIALS	

L.G. Everist, Inc. - Firestone Gravel Resource (M-1996-052) - GROUNDWATER MONITORING REPORT

ELEVATION DATA <small>Note: Elevations derived from the field Measurements (see worksheet 1) and the Elevation (TOC) of each MW</small>													
MONITOR WELL NO.	MW-01	MW-02 (gone)	MW-03	MW-04	MW-05	MW-06 (gone)	MW-07	MW-09 (gone)	MW-10	MW-11 (gone)	MW-12	MW-13	MW-14
NORTHING, FT	1,307,909.50	1,309,751.93	1,312,173.59	1,309,691.51	1,308,177.33	1,308,132.31	1,311,086.36	1,308,703.68	1,308,922.41	1,309,498.47	1,309,482.41	1,311,896.53	1,311,760.15
EASTING, FT	3,162,454.93	3,163,486.50	3,165,870.74	3,165,916.29	3,165,934.69	3,162,338.25	3,162,480.59	3,162,729.80	3,163,085.25	3,163,226.77	3,163,363.55	3,164,613.07	3,164,646.53
ELEVATION (TOG), FT	4,810.13	4,806.39	4,799.87	4,802.43	4,836.24			4,805.05	4,804.48	4,805.02	4,804.59	4,797.56	4,797.23
CASING HEIGHT, FT	3.32	3.28	3.03	2.36	3.02			2.67	2.58	2.75	3.08	3.00	3.00
ELEVATION (TOC), FT	4,812.71	4,809.31	4,802.62	4,805.13	4,839.21	4,812.56	4,806.93	4,807.72	4,807.06	4,807.77	4,807.67	4,800.56	4,800.23
	exterior	interior	exterior	exterior	exterior	interior	exterior	interior	interior	interior	interior	exterior	interior

Groundwater Monitoring Calculations - 2018 and 2019 - to Determine Compliance with Baseline Monitoring

Groundwater Monitoring Plan - notes from Adequacy Response #2 (August-2010)

- Determining Compliance - From AR-2, "LGE proposes implementing corrective actions when groundwater levels at exterior monitoring holes [see #3] have dropped 5 feet or more from the monthly average drop [see #4] established during monitoring [see #2]."
- Monitoring Period - baseline monitoring period is 2006-2010, pre-LGE operations
- Exterior Monitoring Wells - are **BOLDED**, and noted in AR-2 as being: MW-01, MW-03, MW-04, MW-05, MW-07, MW-13
- Mon-to-Mon Average Change +/- (baseline) to incorporate both drops and increases (formerly called "monthly average drop")
 - Mon-to-Mon Average Changes +/- (baseline) were calculated by using the each relevant month-to-month change over each of the baseline years.
 - 5-feet - added to the Mon-to-Mon Average Changes +/- (baseline) to get the Mon-to-Mon Average Changes +/- with 5-feet added (baseline).

DRMS Annual Report - Aug-2019

data from 2018 and 2019

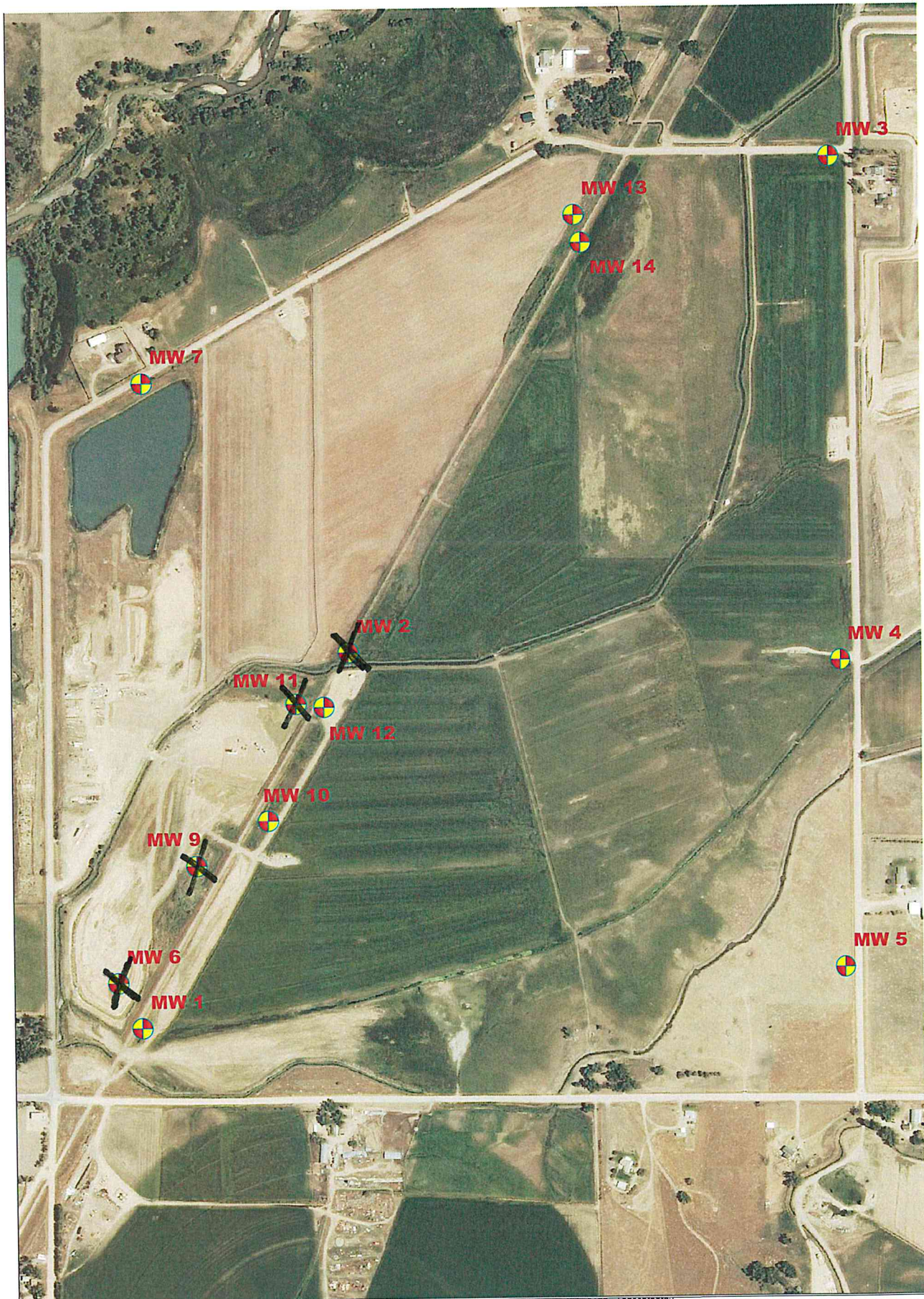
Determining Compliance with Groundwater Monitoring Plan



- Using current data, calculate the "Month-to-Month Change" in groundwater levels using monthly data for each well.
- Month-to-Month Changes that are (=) or (<) the "Mon-to-Mon Average Change +/- with 5-feet Added (baseline)" are in compliance. If the changes are greater, they are out of compliance and in red.

2018 - Mon-to-Mon Change <small>(Month-to-Month Changes that are (=) or (<) the "Mon-to-Mon Average Change +/- with 5-feet Added (baseline)" are in compliance. If the changes are greater, they are out of compliance and shown in red / shaded.)</small>													
January-February	0.40	gone	0.70	0.10	1.85	gone	-0.35	gone	0.50	gone	1.40	0.00	0.50
February-March	0.45	gone	-0.10	0.35	-0.80	gone	0.05	gone	0.25	gone	0.50	0.00	0.00
March-April	0.00	gone	-0.10	1.05	0.25	gone	0.35	gone	0.10	gone	0.15	0.05	0.30
April-May	-1.45	gone	-0.70	0.25	0.30	gone	-0.40	gone	0.10	gone	1.20	0.00	-0.70
May-June	-1.30	gone	-9.25	-1.45	-0.85	gone	-0.10	gone	-0.80	gone	-2.45	0.00	-2.35
June-July	-0.95	gone	-3.25	-0.60	-0.60	gone	-0.35	gone	-4.15	gone	-3.30	-0.15	-2.05
July-August	-0.10	gone	-5.60	-4.70	-1.05	gone	0.75	gone	-0.70	gone	-5.60	0.10	-5.95
August-September	-0.05	gone	3.90	2.20	-0.15	gone	-0.20	gone	1.25	gone	0.95	0.00	1.35
September-October	1.55	gone	4.95	1.90	0.00	gone	0.75	gone	0.70	gone	0.90	0.00	3.10
October-November	0.35	gone	2.00	0.20	0.15	gone	0.45	gone	0.40	gone	1.55	0.00	1.45
November-December	0.35	gone	1.95	0.05	0.15	gone	-0.45	gone	0.45	gone	-0.05	0.00	0.90
December-January	0.60	gone	2.70	-1.50	0.45	gone	-0.05	gone	0.95	gone	1.45	0.00	1.85

2019 - Mon-to-Mon Change <small>(Month-to-Month Changes that are (=) or (<) the "Mon-to-Mon Average Change +/- with 5-feet Added (baseline)" are in compliance. If the changes are greater, they are out of compliance and shown in red / shaded.)</small>													
January-February	0.35	gone	2.05	-4.90	0.15	gone	0.25	gone	0.50	gone	0.75	0.00	0.60
February-March	-0.15	gone	0.70	-0.40	0.50	gone	-0.95	gone	-0.55	gone	-1.95	0.00	0.55
March-April	-0.25	gone	0.50	-0.60	0.15	gone	1.25	gone	-0.85	gone	-1.20	0.00	-0.85
April-May	-0.70	gone	-3.60	0.10	-0.15	gone	-0.20	gone	-0.20	gone	-0.20	0.00	0.30
May-June	-0.20	gone	-0.65	-0.50	-0.30	gone	0.20	gone	-0.25	gone	-0.10	0.00	-0.70
June-July													
July-August													
August-September													
September-October													
October-November													
November-December													
December-January													

DRMS Annual Report 2019 - Groundwater Monitoring Report & Well Map - We are submitting the last year and half of data, starting from January-2018 through June-2019. Analysis of the groundwater monitoring data showed that groundwater levels have remained in compliance. The only exterior well that went out of its baseline range was MW03. It was out of range 2 non-sequential months in 2018, but back in range the following months. These variances appear to be related to irrigation changes - since the Last Chance Ditch is located between the well and our current mining area. The variances have not adversely affected any neighbors. Therefore, there are no compliance issues.



REV. #		BY	DATE	DESCRIPTION
A		-	-	-
B		-	-	-
		DRAWN BY: DCF		
		DATE: 7-23-2014		
		SCALE: nts		
		CAD FILE:		
		L.G. Everist, Inc.		
		Assegate Producers		
		7321 E. 88th Ave, Suite 200		
		Henderson, CO, 80640		
		(303) 286-2245		
		Monitoring Well Layout		
		Firestone Sand and Gravel Resource		