



Colorado Milling Company, LLC File No. M-1994-117 AM-1 Response to 4th Adequacy Review Letter

1 message

Cynthia Kennedy <ctk@kennedylawyer.com>

Mon, Jun 24, 2019 at 3:47 PM

To: "amy.eschberger@state.co.us" <amy.eschberger@state.co.us>, "michael.cummingham@state.co.us" <michael.cummingham@state.co.us>, "scott.schultz@coag.gov" <scott.schultz@coag.gov>, Camille Mojar <camille.mojar@state.co.us>, "charles.kooyman@coag.gov" <charles.kooyman@coag.gov>
Cc: Mark Steen <goldtontine@gmail.com>, "jrholaw@comcast.net" <jrholaw@comcast.net>

To Whom It May Concern:

Attached for filing and your review, please find CMC's Response to the 4th Adequacy Review Letter in the above-referenced case.

Cyndi Kennedy

Kennedy Law Firm

a professional corporation

308 1/2 E. Simpson Street

Lafayette, CO 80026

(303) 604-1600

ctk@kennedylawyer.com

Confidentially Notice: This message, the attachments, and any metadata contained in any attachments may be confidential and may be privileged. Do not review any metadata contained herein or in any attachments. If you believe that this email has been sent to you in error, please reply to the sender that you received the message in error; then please delete this email. Thank you. IRS CIRCULAR 230 DISCLOSURE: This email and any attached documents may contain provisions concerning a federal tax issue or issues. This email and any attached documents are not intended or written to be used, and cannot be used, by any taxpayer for the purpose of avoiding penalties that may be imposed on any taxpayer by the Internal Revenue Service.



CMC Response to 4th Adequacy Review Letter.pdf

574K

COLORADO MILLING COMPANY, LLC
P.O. Box 1523
Longmont, Colorado 80502

Colorado Division of Reclamation, Mining and Safety
Michael Cunningham & Amy Eschberger
Environmental Protection Specialists
1313 Sherman Street – Room 215
Denver, Colorado 80203
I

June 24, 2019

**RE: Gold Hill Mill, Permit No. M-1994-117, Amendment Application
(Revision No. AM-01), Adequacy Review No. 4**

Attention: Michael Cunningham & Amy Eschberger:

This is the Colorado Milling Company, LLC's Response Letter to the Amy Eschberger's May 21, 2019 Adequacy Review No. 4 of the Application for an Amendment to the Gold Hill Mill Limited Impact 110 (2) Permit No. M-1994-117, to formally add the previously permitted Left Hand Creek Pump Station, Gold Hill Mill Pipeline, and the Times Mine adit portal to the affected land boundary of the Gold Hill Mill Permit. These three features are collectively referred to as the Gold Hill Mill Waterline in this Response Letter. In order to ensure that the responses to the Division of Reclamation, Mining and Safety's request for additional information and clarification can be properly reviewed, the responses are set out below each of Amy Eschberger's Adequacy Review comments.

Exhibit C – Mining Plan (Rule 6.3.3):

1) The operator's response to item no. 7 refers to the Technical Memorandum regarding the Times Mine Bulkhead Evaluation prepared by Christoph Goss PhD, P.E. of Deere & Ault Consultants, Inc., dated May 15, 2019 (bulkhead evaluation). The Division accepts this bulkhead evaluation as demonstration the bulkhead is designed to impound water as proposed in the application, but only if the operator commits to the recommendations made in the evaluation.

Please submit the following:

a) A mine pool drawdown plan to rapidly lower water levels in the mine workings in an emergency situation where bulkhead failure is imminent. This plan should include lowering water levels, at a minimum, below the collar elevation of the winze connecting the Times Mine to the Wynona Mine, 8,347.7 feet. The plan should include details such as the type and location of equipment to be used, pump/flow rate capacities, estimated water volume to be removed, estimated length of time to drawdown the required water volume, and how the operation will manage water pumped from the workings (i.e., Will a discharge permit be required from the CDPHE, WQCD? If so, include in Exhibit F). The mine pool drawdown plan should also

include procedures for evaluating the bulkhead after the mine pool has been lowered to a safe level.

CMC Response: CMC has been in contact with Christoph Goss, P. E. on a frequent basis since he submitted his Times Mine Bulkhead Evaluation. These discussions focused on implementing his Recommendations to monitor and control every aspect of the Times and Wynona Mine underground water storage plan, including the need for a pumping test in order to develop a mine pool drawdown plan. The undersigned representative of CMC was meeting with Christoph M. Goss, P. E., Victor G. deWolfe, P. E. and Erinn Johnson, BSc. of Deere & Ault Consultants, Inc. (Deere & Ault) on the morning of June 12, 2019 to prepare a pumping test that would be used to develop a mine pool drawdown plan. This pumping test would have used the existing equipment and piping to pump water from the Wynona Mine shaft through a totalizing flow meter at a constant rate into the existing water tanks in the Gold Hill Mill and the tailings pond while water levels were measured in both the Times Mine well and the Wynona Mine shaft on a regular and frequent basis. The data from this pumping test would have been used to create a mine pool elevation to capacity curve. This curve would then be used develop a mine pool control plan and monitoring plan that would be tied to the water elevations in the Times and Wynona Mines. The location of the water flow meter inside the Gold Hill Mill and the type of pressure gauge that would be installed in the Times Mine were discussed, along with dates when Deere & Ault's consultants could conduct and monitor the pumping test at the Gold Hill Mill. CMC's representatives received the DRMS's Decision to Deny the Amendment to the Gold Hill Mill shortly after concluding this meeting with Deere & Ault, and cancelled the pumping test which would have been conducted at the Gold Hill Millsite.

Please commit to the following:

b) Installing stainless steel sleeves on the bulkhead pipes and replacing the PVC valves with stainless steel to protect this equipment from cracking. This should be done when there is no water behind the bulkhead.

CMC Response: CMC will commit to installing stainless steel sleeves on the bulkhead pipes and replacing the PVC valves with new valves to prevent this equipment from cracking. This will be done when there is no water behind the Times Mine Bulkhead.

c) Investigating the existing pump and top of casing in the Wynona Mine shaft and replacing this equipment if necessary to obtain accurate water level measurements and water quality samples from this mine.

CMC Response: CMC will investigate the existing pump and the top of the casing in the Wynona Mine shaft and will replace this equipment if necessary, to obtain accurate water level measurements and water quality samples from this mine.

d) Maintaining water levels in the mine workings below the design standard for the bulkhead,

17.6 feet of head (water level behind bulkhead invert) or an elevation of 8,360 feet. This will include monitoring water levels in the mine workings on a weekly basis during operations. The Division strongly recommends the installation of a pressure transducer and datalogger in the drill hole(s) for monitoring water levels during periods where mine staff is unavailable to obtain manual measurements. If water levels are observed to exceed 8,360 feet at any time, the operator must immediately implement the mine pool drawdown plan to get water levels below this elevation.

CMC Response: CMC is awaiting the results of the Deere & Ault's mine pool control plan and monitoring plan to determine if it is necessary to maintain the water levels in the mine workings below the design standard for the Times Mine Bulkhead.

e) Maintaining the bulkhead pressure below the design standard for the bulkhead, 7.6 psi (with 17.6 feet of head). This will include installing a stainless steel liquid filled pressure gauge (0-50 psi range) on the bulkhead pipes, on a tee between the two valves, and monitoring the gauge on a weekly basis. If bulkhead pressure is observed to exceed 7.6 psi at any time, the operator must immediately implement the mine pool drawdown plan to get bulkhead pressure below this amount.

CMC Response: CMC is awaiting the results of the Deere & Ault's mine pool control plan and monitoring plan to determine the actual Times Mine Bulkhead pressure and the effects of different water levels in the Times and Wynona Mines on the bulkhead pressure. This will determine the actual amount of water that needs to be pumped from the underground mine workings to control the bulkhead pressure.

f) Inspecting the bulkhead on a weekly basis to document conditions, including any increases in seepage or the development of any concentrated areas of flow. Any change in conditions from that observed in the bulkhead evaluation, including any measurable and/or concentrated flows from the bulkhead, would require immediate implementation of the mine pool drawdown plan to lower water levels to, at a minimum, below the collar elevation of the winze.

CMC Response: CMC is awaiting the results of the Deere & Ault's mine pool control plan and monitoring plan to determine the frequency of the inspection of the Times Mine Bulkhead. The Times Mine Bulkhead has not shown any increases in seepage or any concentrated areas of flow in the last 677 days since access to the Times Mine portal was restored on August 16, 2017. CMC's employees and consultants have inspected the Times Mine Bulkhead numerous times during the last year and ten months, and they have never observed any change in conditions from that observed in the bulkhead when it was first examined. The undersigned individual has not observed any changes in the condition of the Times Mine Bulkhead since it was first constructed in 1986.

g) Monitoring water quality in the Times Mine on a quarterly basis (for the sampling parameters approved in this application) to evaluate potential concrete degradation of the bulkhead. The

monitoring results shall be submitted to the Division quarterly with other site monitoring data. If water quality results for the Times Mine indicate sulfate concentrations above 150 ppm, the bulkhead evaluation suggests conducting a mortar bar test (ASTM C1038) using the mine water and standard Type-I cement to evaluate the reactivity. The results of such a study, including any proposed mitigation measures must be reviewed and accepted by the Division prior to implementation.

CMC Response: CMC has discussed the potential for concrete degradation of the Times Mine Bulkhead with Deere & Ault and prefer to let them address the need to sample the water quality on a quarterly basis to evaluate the potential for concrete degradation of the bulkhead.

h) Maintaining all monitoring records on site, to be made readily available for Division review during an inspection.

CMC Response: CMC commits to maintaining all monitoring records on site, to be made readily available for DRMS review during an inspection.

i) Notifying the Division, as soon as reasonably practicable, but no later than 24 hours, after the operator has knowledge of a failure or imminent failure of the Times Mine bulkhead, in accordance with Rule 8.1(a). The operator's general notification responsibilities for reporting emergency conditions are described in Rule 8.2. Please be advised, the Division would consider an exceedance of the water level standard or bulkhead pressure standard, stated in item nos. 1(d) and (e) above, or a change in bulkhead conditions as described in item no. 1(f) above, to be an imminent failure situation requiring notification in accordance with Rules 8.1(a) and 8.2.

CMC Response: CMC commits to notifying the DRMS, as soon as reasonably practicable, but no later than twenty-four (24) hours, after the operator has knowledge of a failure or imminent failure of the Times Mine Bulkhead, in accordance with Rule 8.1(a).

j) Obtaining Division approval for any proposed change in the monitoring plans (e.g., frequencies, parameters, locations, equipment) prior to implementation of these changes. This may require submittal of a Technical Revision or Amendment application.

CMC Response: CMC commits to obtaining DRMS approval for any change in the monitoring plans prior to the implementation of these changes.

2) The operator's response to item no. 11 did not clarify the error in the estimated annual water usage for mill operations. Pursuant to Rule 6.3.3(1)(h), please specify how much water will be used in conjunction with the operation (as proposed in this application – not as may be proposed in a future application).

CMC Response: The original, Mined Land Reclamation Board approved Limited Impact Permit for the Gold Hill Mill included the following description of how much water would be used in conjunction with the operation of the gravity and flotation circuits in the milling facility:

“This milling complex has been designed to maintain a stable water balance throughout the ore processing and tailings impoundment system. The milling operation will require 4 tons of water for every ton of ore processed in the gravity and flotation concentration circuits. Fresh water will be introduced into the milling process in the grinding circuit. Most of the water that will be used in grinding and classification, and in the gravity concentration circuit, will be recycled from the thickener tank overflow launder back to the ball mill. Fresh water will also be added to the thickened pulp as it passes from the thickener tank underflow to the flotation concentration circuit.” The operative word in this description of the Gold Hill Mill’s gravity and flotation concentration circuits is **recycled**. By recycling most of the water that will be used in the grinding and gravity concentration circuits through the proper use of the large thickener tank (35 feet in diameter by 10 feet high with a water storage capacity of 52,870 gallons of process water) CMC will only need to add about one (1) ton of fresh water to the flotation concentration circuit for every ton of ore that is being processed. Only the water from the flotation circuit is discharged into the tailings retention pond, while most of the water used in the grinding, classification and gravity circuits is **recycled**. In other words, when the Gold Hill Mill is operated according to its original mineral processing flowchart, the amount of water actually consumed will be less than one fourth of the water that is pumped from the underground water storage pool into the mill.

The original approved Gold Hill Mill Permit further states: “The water consumed in the milling process and lost in evaporation from the tailings pond is not expected to exceed 20 percent of the water used in the mill. The water consumed in the milling process will mainly result from water entrapped in the gravity and flotation concentrates and in the unconsolidated tailings. Because of the altitude and limited size of the tailings pond, only a relatively small amount of water is expected to be lost due to evaporation. Recycling the mill water will reduce the amount of fresh water needed in the milling process, and decrease the quantity of water pumped from Left Hand Creek.” The operative word in this description of the milling process is **consumed**. This calculation estimated that the amount of water **consumed** in the milling process would be 6,350 gallons of water per day when the Gold Hill Mill was processing 50 tons of ore per 24 hour day. Actual mineral processing operations in the Gold Hill Mill demonstrated that the volume of water **consumed** was approximately 4,500 gallons of water per day, which amounts to 1,170,000 gallons per year. This is well below the 3,388,850 gallons of water that can be pumped from Left Hand Creek in a dry year.

CMC first addressed this question in its Response Letter dated December 8, 2018, as follows:

28. As required by Rule 6.3.3(1)(h), specify how much water will be used in conjunction with the operation. The estimate may be based on annual consumption rates when the mill is operating at full capacity.

CMC’s December 8, 2018 Response: When the Gold Hill Mill is operating at its full capacity of 50 tons of ore per day and 260 days of operation per year, the annual consumption rate will be

1,651,000 gallons of water. This is well below the 3,388,850 gallons of water that can be pumped from Left Hand Creek during a dry year.

CMC addressed how much water will be used in conjunction with the operation (as proposed in this application – not as may be proposed in a future application) when it answered the DRMS's question regarding the estimated date that mining will end, which was contained in the Adequacy Review No.1, question number 12, which CMC also answered on December 8, 2018. Specifically, the DRMS asked CMC to "provide an estimate of how long the mill can operate at full capacity before the tailings impoundment is full."

CMC's December 8, 2018 Response: The available tailings capacity in the existing impoundment is estimated at 5,000 tons. Based upon milling operations at 50 tons per day, the mill can operate at full capacity for one-hundred (100) days without raising the embankment.

Therefore, if CMC manages to process 5,000 tons of ore (as proposed during this application – not as may be proposed in some future application) the maximum amount of water that will be used in processing this amount of ore will be 20,000 tons of water (without any recycling), or 4,000 tons of water with recycling. However, the amount of water that will be **consumed** (entrapped in the gravity and flotation concentrates and in the unconsolidated tailings) in processing 5,000 tons of ore will only be approximately 1,673 tons of water. This is far below the amount of water that CMC is entitled to withdraw from Left Hand Creek for mineral processing.

Exhibit E – Map (Rule 6.3.5):

3) The operator's response to item no. 14 included revised Exhibit E maps. However, some of these maps do not include all of the required information.

Please submit the following:

a) A revised Mining Plan Map(s) (Figure E-1) which clearly outlines and labels the permit boundaries described in Exhibit A – Legal Description as required by Rule 6.3.5(2)(a), particularly the permit boundaries proposed near Left Hand Creek.

CMC Response: Attached to this Response Letter are copies of Map E-1A Permit Area of the Permit Boundaries proposed near Left Hand Creek showing where the Pump Station will pump water for the Gold Hill Mill. Also, CMC is attaching a Legal Description of this Permit Parcel with a surveyor's description in metes and bounds for this particular parcel of land. This is essentially the same map of this area that was submitted with CMC's Response Letter to the DRMS's Adequacy Review No. 3, but without as many details to make it easier for the DRMS to accurately identify the affected area which corresponds to the Application for an Amendment to the Gold Hill Mill Permit.

CMC believes that it has fully complied with the requirements of Rule 6.3.5 Exhibit E – Mining Plan Map, with the numerous Mining Plan Maps that it has submitted with each Response Letter. All of them outline and label the Permit Boundaries, label the owners of record of the surface of

the affected land within two-hundred (200) feet of the affected area, identify the owners of the subsurface mineral rights, and the type and structure and owners of record of any permanent or man-made structures within 200 feet of the affected area. Since no mineral extraction will proceed along the entire length of the Gold Hill Mill Waterline, most of the features required under Rule 6.3.5 do not apply to this Permit Amendment Application.

b) A revised Reclamation Plan Map(s) (Figure E-5) which includes the following information required by Rule 6.3.5(3), particularly for the mill site:

- i. Show the gradient of all reclaimed slopes (horizontal:vertical) sufficient to describe the post mine topography.
- ii. Indicate where vegetation will not be established and the general area(s) for shrub or tree planting.
- iii. State the average thickness of replaced overburden by reclamation area or phase.
- iv. State the average thickness of replaced topsoil by reclamation area or phase.

CMC Response: CMC has submitted numerous Reclamation Plan Map(s) (Figure E-5) during the course of this Permit Amendment Application. This is the very first time that the DRMS has requested that this specific information be included on the Reclamation Plan Maps (Figure E-5). Inasmuch as there is no change in the post mine topography, vegetation, replacement of overburden, or replaced topsoil along the entire length of the Gold Hill Mill Waterline, none of these features have ever been shown on any of the Reclamation Plan Maps that have been submitted to the DRMS.

With regard to the Gold Hill Millsite, the following information should be helpful:

According to Mineral Rules and Regulations of the Colorado Mined Land Reclamation Board effective January 2015, Rule 1.10 (2), a 110 Amendment Application To A Permit will not be required to submit any information which duplicates applicable previous submittals. However, the applicant shall clearly describe where, in the original application and supporting documents, the information not included in the amendment application, but necessary to render the amendment technically adequate, may be found.

This conforms to what Michael A. Cunningham, Environmental Protection Specialist, wrote in his Adequacy Review No. 1, dated January 26, 2018:

“ Pursuant to Rule 1.10(2), a 110 Amendment Application is not required to contain information which duplicates applicable previous submittals. However, the Applicant shall clearly describe where, in the original Application and supporting documents, the information not included in the Amendment Application, but necessary to render the Amendment technically adequate may be found.”

CMC believes that it has already submitted this information in accordance with Rule 1.10(2). On December 21, 2018, in the DRMS's Adequacy Review No. 2, Amy Eschberger requested additional information regarding the Reclamation Plan for the Gold Hill Mill. CMC was asked where in the Gold Hill Mill Permit file the pertinent documents may be found, as required by Rule 1.10(2).

CMC's January 4, 2019 Response: On July 26, 1995, the Colorado Mined Land Reclamation Board approved Colina Oro Molina's application for a permit for the Gold Hill Mill. This permit's Reclamation Plan essentially followed the original Reclamation Plan filed by the Gold Hill Ventures Limited Partnership on July 20, 1985, which was approved by the Mined Land Reclamation Board on September 26, 1985, under the Cash Mine Permit No. M-1983-141. The sole purpose of Colina Oro Molina's Reclamation Plan was to close the Gold Hill Mill and cease further milling operations at this site. Various Reclamation Plan Maps were filed by Colina Oro Molina's representatives and consultants during the time between when they applied for a Reclamation Permit on December 12, 1994, and when it was finally approved on July 26, 1995. None of the documents that were filed by Colina Oro Molina altered the approved Reclamation Plan filed on July 20, 1985. On June 16, 1998, ITEC Environmental became the successor operator to Colina Oro Molina of the Gold Hill Mill Permit No. M-1994-117. Although ITEC Environmental altered the permit boundaries and enlarged and rebuilt the tailings pond, this permitted operator did not revise the original Reclamation Plan filed by the Gold Hill Ventures Limited Partnership on July 20, 1985. Therefore, the pertinent documents may be found under the original Reclamation Plan filed with the Amendment to the Cash Mine Permit No. M-1983-141 on July 20, 1985, between the pages 20 and 26 of the text and on the Millsite and Tailings Pond Reclamation Plan Map found between pages 26 and 27.

The Reclamation Plan Map filed by Gold Hill Ventures on July 20, 1985 shows the gradient of all reclaimed slopes (horizontal : vertical) sufficient to describe the post mine topography; and the accompanying text indicates where vegetation will not be established and the general area(s) for shrub or tree planting; it states the average thickness of replaced overburden by reclamation area or phase; and it also states the average thickness of replaced overburden by reclamation area or phase. All of this information has been available for consideration and review by the DRMS since it was filed on July 20, 1985 and approved by the Mined Land Reclamation Board on September 25, 1985.

Since the Gold Hill Mill's Reclamation Plan was approved by the Mined Land Reclamation Board on September 25, 1985, a cover of stabilizing vegetation on the sloping sides of the tailings impoundment embankment has been established with more than forty (40) trees, including Ponderosa and Lodgepole Pine trees and Aspen trees. Common Juniper, and Kinnikinnick shrubs are growing between these trees. Native grasses are growing abundantly on the South facing sloping side of the tailings pond embankment. CMC has sprayed this entire area under its Weed Control Maintenance Plan, and the invasive species in this area are under control.

The Gold Hill Mill's approved Reclamation Plan for the tailings retention structure shows that the interior of the tailings pond will be leveled by grading with a small tractor, creating the flat surface shown on CMC's Reclamation Plan Map(s) (Figure E-5). So, the post mine topography will be as shown on the Reclamation Plan Maps submitted by CMC. Under the original Reclamation Plan

for the tailings retention structure, there are no areas where vegetation will not be established. The entire interior of the tailings pond will have shrubs and trees planted along with a mixture of native grasses. According to the original Gold Hill Mill Reclamation Plan, a two foot rock capillary barrier will be placed on top of the mill tailings, before the salvaged and stockpiled topsoil is placed over this rock capillary barrier. The thickness of replaced topsoil will be between 3 and 4 inches. Since this reclamation work will be covering all of the leveled surface of the interior of the Gold Hill Mill tailings pond, the Reclamation Maps submitted by CMC showing the reclaimed surface of the tailings pond are very similar to the one submitted and approved by Gold Hill Ventures on July 20, 1985. The larger scale (1inch = 50 feet) of that original Reclamation Plan Map, clearly shows the post mine topography of the tailings retention embankment and the leveled surface of the interior of the tailings pond after it has been reclaimed.

Additional Item(s):

4) The Division has calculated the required financial warranty for the proposed operation to be in the amount of \$77,546.00, which is \$21,346.00 more than the currently held financial warranty. Please review the enclosed bond estimate and provide any comments to the Division by the decision date. The additional required financial warranty will be due within 60 days of application approval.

CMC Response: CMC accepts the required financial warranty for the proposed operation in the amount of \$77,546.00, which is an increase of \$21,346.00 of the currently held financial warranty.

5) Please remember that, pursuant to Rule 1.6.2(1)(c), any changes or additions to the application on file in our office must also be reflected in the public review copy which was placed with the County Clerk and Recorder. Pursuant to Rule 6.4.18, you must provide our office with an affidavit or receipt indicating the date this was done.

CMC Response: CMC will provide the DRMS with a file stamped receipt or an affidavit from the Boulder County Clerk and Recorder's Office.

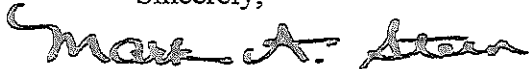
As mentioned above, the application decision date of **May 21, 2019** was set by the Board Order mailed on March 7, 2019. Therefore, if you are unable to address all remaining adequacy items by this date, an extension request must be submitted to our office. Such a request would need to be scheduled for consideration by the Mined Land Reclamation Board at an upcoming meeting.

CMC Response: Pursuant to Rule 1.4.1(9) of the Rules and Regulations of the Colorado Mined Land Reclamation Board, and following the multiple written directions of the DRMS, CMC requested an extension of the review time and decision date for its Application for an Amendment to the Gold Hill Mill Limited Impact 110 (2) Permit No. M-1994-117, to formally add the previously permitted Left Hand Creek Pump Station, Gold Hill Mill Pipeline, and the Times Mine adit portal to the affected land boundary of the Gold Hill Mill Permit. CMC submitted an extension request to the Mined Land Reclamation Board on June 5, 2019. This additional time is necessary

to allow CMC's consultants additional time to properly address the new adequacy review items contained in the DRMS's Fourth Adequacy Review Letter dated May 21, 2019.

The Colorado Milling Company, LLC's representatives and consultants have been working to address all of the DRMS's Fourth Adequacy Review questions. However, CMC and Deere & Ault have been prevented from conducting a pumping test that would be used to develop a mine pool drawdown plan, because of the DRMS's June 12, 2019 Decision to Deny the Application for an Amendment to the Gold Hill Mill Permit. Accordingly, CMC cannot properly address some of the DRMS's Fourth Adequacy Review questions at this time.

Sincerely,

A handwritten signature in cursive script that reads "Mark A. Steen".

Mark A. Steen
Colorado Milling Company, LLC

Cc: Mike Bynum
Colorado Milling Company, LLC
50 West 100 South Street
Moab, Utah 80342

Cc: John R. Henderson
Attorney at Law

Cc: Cynthia T. Kennedy
Attorney at Law

Cc: Christoph M. Goss, P. E.
Deere & Ault Consultants, Inc.

Cc: Victor G. deWolfe, P. E.
Deere & Ault Consultants, Inc.

Cc: James M. Beck, P. E.
J. M. Beck & Associates

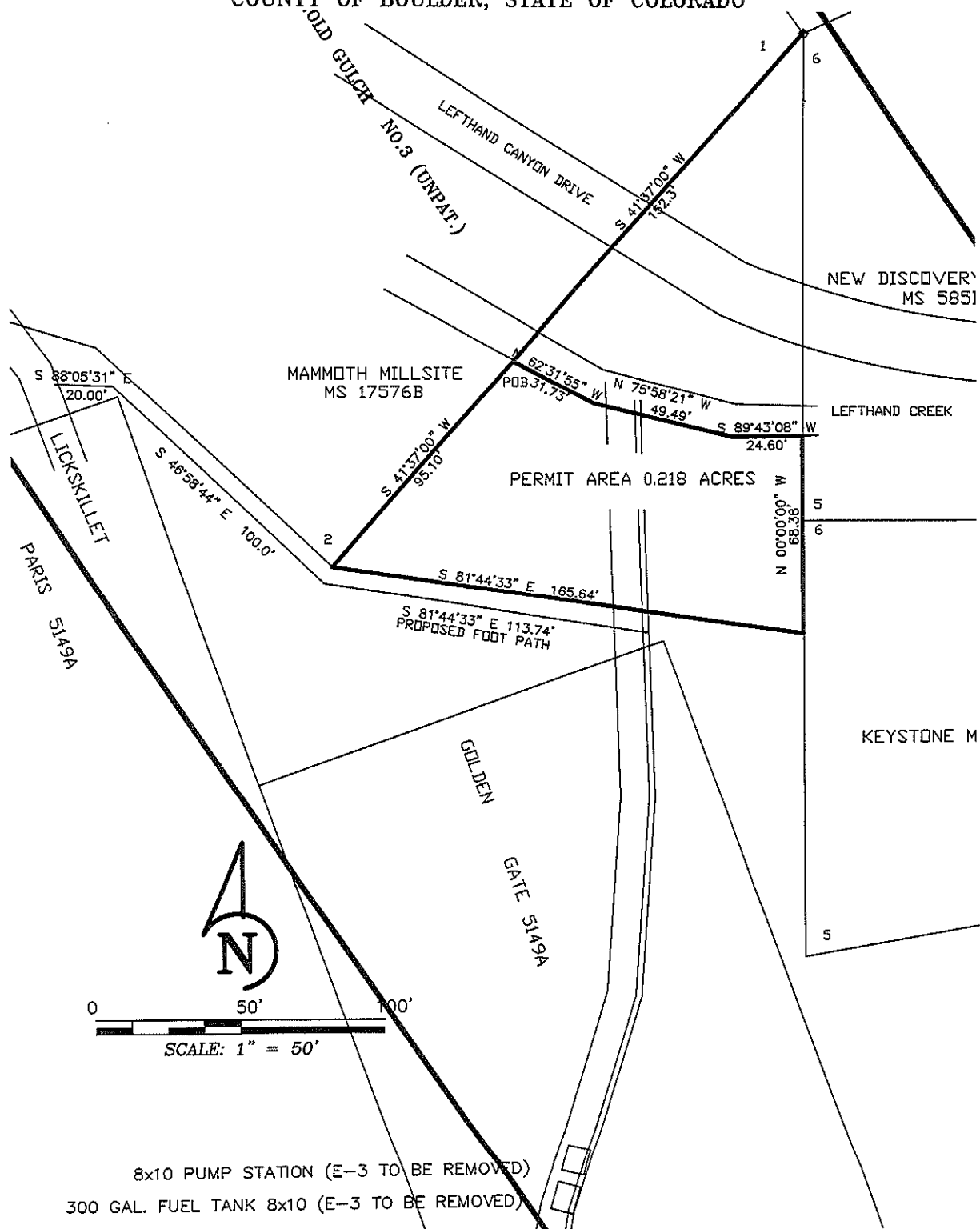
Cc: Jeff Pillus, P.E.
SET Engineering, LLC

Carl Swift
Mountain Surveying, LLC

MAP E-1A PERMIT BOUNDARIES NEAR LEFT HAND CREEK SHOWING THE WATERLINE INTAKE POINT AND THE PROPOSED FOOTPATH TO ACCESS THE SITE

CMC Response: Attached to this Response Letter are copies of Map E-1A Permit Area of the Permit Boundaries proposed near Left Hand Creek showing where the Pump Station will pump water for the Gold Hill Mill. Also, CMC is attaching a Legal Description of this Permit Parcel with a surveyor's description in metes and bounds for this particular parcel of land. This is essentially the same map of this area that was submitted with CMC's Response Letter to the DRMS's Adequacy Review No. 3, but without as many details to make it easier for the DRMS to accurately identify the affected area which corresponds to the Application for an Amendment to the Gold Hill Mill Permit.

**E-1A PERMIT AREA - COLORADO MILLING CO.-GOLD HILL MILL WATERLINE
LOCATED IN SE/4 SECTION 2, T-1-N, R-72-W OF THE SIXTH P.M.,
COUNTY OF BOULDER, STATE OF COLORADO**



LEGAL DESCRIPTION-PERMIT PARCEL
GOLD HILL MILL PERMIT NO.M-1994-117

STATE OF COLORADO DIVISION OF RECLAMATION MINING AND SAFETY
PERMIT AREA FOR COLORADO MILLING COMPANY, LLC, GOLD HILL MILL
PERMIT NO. M-1994-117, A PERMIT PARCEL UPON THE GOLD GULCH NO.3
UNPATENTED MINING CLAIM LOCATED IN THE SE 1/4 SECTION 2,
TOWNSHIP-1-NORTH, RANGE-72-WEST OF THE SIXTH P.M., COUNTY OF
BOULDER, STATE OF COLORADO, MORE PARTICULARLY DESCRIBED AS
FOLLOWS:

COMMENCING AT CORNER 1 OF THE MAMMOTH MILLSITE MS 17576B ALSO
BEING CORNER 6 OF THE NEW DISCOVERY MILLSITE MS 585B;

THENCE ALONG THE RECORD BEARING
S 41°37'00" W A DISTANCE OF 152.3 FEET,
TO THE SOUTHERLY EMBANKMENT OF LEFT HAND CREEK MORE OR LESS,
AND TO THE TRUE POINT OF BEGINNING;
THENCE ALONG THE RECORD BEARING
S 41°37'00" W A DISTANCE OF 95.10 FEET,
AND ALONG LINE 1-2 TO CORNER 2 OF
SAID MAMMOTH MILLSITE MS 17576B;
THENCE S 81°44'33" E A DISTANCE OF 165.64 FEET,
TO LINE 5-6 KEYSTONE MILLSITE MS 69B;
THENCE ALONG THE RECORD BEARING NORTH (N 00°00" E) A DISTANCE OF
68.38 FEET ALONG LINE 5-6 OF KEYSTONE MILLSITE MS 69B AND LINE 5-
6 OF SAID NEW DISCOVERY MILLSITE MS 585B
TO THE SOUTHERLY EMBANKMENT OF LEFT HAND CREEK;
THENCE S 89°43'08" W A DISTANCE OF 24.60 FEET,
ALONG SOUTHERLY EMBANKMENT OF LEFT HAND CREEK;
THENCE N 75°58'21" W A DISTANCE OF 49.49 FEET,
ALONG SOUTHERLY EMBANKMENT OF LEFT HAND CREEK;
THENCE N 62°31'55" W A DISTANCE OF 31.73 FEET
ALONG SOUTHERLY EMBANKMENT OF LEFT HAND CREEK
TO LINE 1-2 OF SAID MAMMOTH MILLSITE MS 17576B,
AND TO THE TRUE POINT OF BEGINNING.

THIS PERMIT PARCEL CONTAINS 0.218 ACRES MORE OR LESS.

RECEIPT OF DELIVERY

OFFICE OF THE BOULDER COUNTY CLERK AND RECORDER

1750 33rd Street
Boulder, Colorado

CERTIFICATION

I, Richard Lacusky certify that a copy of the Colorado Milling Company, LLC's Response Letter to the Colorado Division of Reclamation, Mining and Safety's Adequacy Review No. 4 of the Application for an Amendment to the Limited Impact 110 (2) Permit No. 1994-117 for the Gold Hill Mill, dated May 21, 2019 was hand-delivered to me on June 24th, 2019.

Signed: Richard Lacusky

Dated: 6/24/19

CMC's Proof of Filing with the Boulder County Clerk and Recorder.