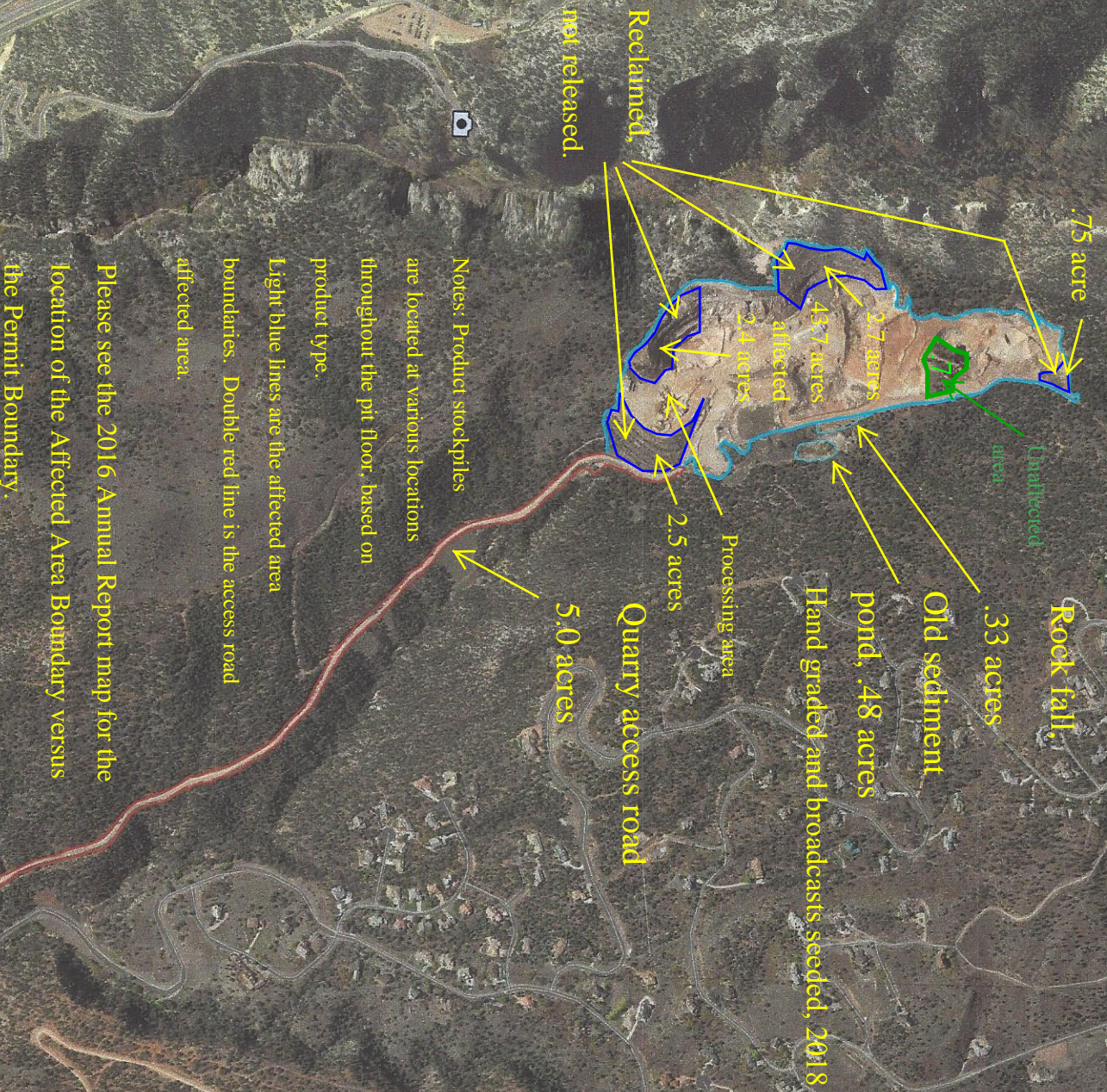


Snyder Quarry

May 28, 2019



Notes: Product stockpiles are located at various locations throughout the pit floor, based on product type. Light blue lines are the affected area boundaries. Double red line is the access road affected area.

Please see the 2016 Annual Report map for the location of the Affected Area Boundary versus the Permit Boundary.

Total affected acres:

- 43.7 Pit area
- .33 Rockfall
- .48 Old sed pond
- 5.0 Access road
- 49.51 subtotal
- .7 Unaffected area
- 48.81 Total affected acres

3000 ft

360

