



United States
Department of
Agriculture

Forest
Service

Rifle Ranger District

0094 County Rd 244
Rifle, CO 81650
970-625-2371
Fax: 970-625-2532

File Code: 2840
Date: April 2, 2019

CERTIFIED RETURN RECEIPT NUMBER: 7012 3050 0002 3230 0534

John Strong
Strong Mining Company
1504 E. 12th Street
Rifle, CO 81650

RECEIVED

APR 03 2019

**DIVISION OF RECLAMATION
MINING AND SAFETY**

Dear John,

This letter is regarding the Apex Lode (CMC290783), Hill Top Lode (CMC290784), La Vada Lode (CMC290785), Lois Lode (CMC290786), Scranton Lode (CMC290787), and Senate Lode (CMC290788) mining claims located in Sections 7, 8, 17, and 18, T. 5 S., R. 88 W in Garfield County and situated on the Rifle Ranger District.

On November 13, 2018, your son George contacted Jason Gross to advise him that you wish to start final reclamation of the Apex Mine Site. On March 5, 2019, George Strong, Ed Tacker, John Strong (cousin), and Kent Strong met with Jason Gross and Olivia Garcia to discuss final reclamation activities for the Apex Mine site.

In accordance with 36 CFR 228.8(g) you are required to reclaim the surface disturbed in operations for the prevention of onsite and off-site damage to the environment and forest surface resources. I have enclosed an Apex Mine 2019-2021 Reclamation Plan for your review and signature. Signature page is due on April 15, 2019.

Your cooperation in this matter is appreciated. If you have any further questions, please contact Jason Gross (970) 876-9046 or Olivia Garcia at (970) 945-3220 for assistance.

Sincerely,

SARAH HANKENS
District Ranger

Enclosures: Apex Mine Reclamation Plan
Figure 1 – Strong Mine Plat Map

cc:

Amy Yeldell

State of Colorado Division of Reclamation, Mining, and Safety

101 South 3rd Street, Room 301

Grand Junction, Colorado 81501



**Apex Mine
John Strong, Operator**

**2019-2021
Reclamation Plan**

INTRODUCTION

The purpose of this document is to describe the necessary actions to implement the final clean-up and reclamation of the Apex Mine to reduce risks and liability for safety on public lands and restoration of impacts to surface (natural) resources. The goal of this plan of operations is to reclaim public land from past mining activities associated with the use and occupancy of the unpatented mining claims. The following items are based on standard guidelines for mining activities on National Forest System lands with the goal to protect all natural resources and minimize adverse mining impacts as required by Forest Service regulations in 36 CFR 228.

GENERAL INFORMATION

Claims: Apex Lode (CMC290783), Hill Top Lode (CMC290784), La Vada Lode (CMC290785), Lois Lode (CMC290786), Scranton Lode (CMC290787), and Senate Lode (CMC290788).

Map: See Figure 1 – Strong Mine Plat Map

Location: SE ¼ Section 7, Township 5 South, Range 88 West, 6th PM, Garfield County, CO.
SW ¼ Section 8, Township 5 South, Range 88 West, 6th PM, Garfield County, CO.
NW ¼ Section 17, Township 5 South, Range 88 West, 6th PM, Garfield County, CO.
NE ¼ Section 18, Township 5 South, Range 88 West, 6th PM, Garfield County, CO.

Name, address and phone number of claimant:

John Strong
Strong Mining Company
1505 E. 12th Street
Rifle, CO 81650-3703

Name, address, and phone number of authorized field representative (if other than the operator). Please attach authorization to act on behalf of claimant.

George Strong
Strong Mining Company
1505 E. 12th Street
Rifle, CO 81650-3703

Start of Reclamation Activities: June 30, 2019

End of Reclamation Activities: September 30, 2021

General Conditions (continued)

- The time lines outlined in this reclamation plan are based on timely approval of all submitted plans to Federal and State agencies.
- The claimant is authorized to have work crews of two to six (2-6) individuals each field season (June 30 – September 30) to conduct necessary reclamation activities. Prior to mobilization, the claimant will inform the Forest Service when work is scheduled to begin.
- The claimant is authorized to use heavy equipment such as a mini excavator or a small rubber tired tractor to conduct necessary reclamation activities.
- The claimant is authorized to use mechanized equipment (chainsaw), fabrication equipment (portable welder) and hand tools to conduct necessary reclamation activities. Prior to using mechanized equipment the mining claimant will inform the Forest Service of the equipment size and expected duration of equipment use.
- All vehicle travel will be over existing roads. No motorized travel off existing roads is authorized. Vehicles identified for this plan include all terrain (ATV) and a pick-up truck.
- Individuals assisting the claimant will be authorized to camp on the mining claim during the reclamation phase of this Plan of Operations. If the claimant or workers camp overnight, all foodstuffs will be properly contained and located to minimize conflicts with wildlife, especially bears. Food items should be stored in a bear-proof container away from any tenting or camping sites.
- All human waste will be removed from the National Forest for disposal in an approved facility in accordance with state and local regulations. Catholes are not authorized for disposal of human waste by the claimant.
- The mine entrance gate on NFSR #602 (Transfer Trail Road) will be closed and locked at all times by the claimant or assistants during reclamation activities.
- All trash will be tightly covered or bagged, and promptly removed from the National Forest for disposal in an approved facility according to state and local regulations. No trash will be burned on the National Forest or buried as part of reclamation. All human waste will be removed from the National Forest.
- All internal combustion engines including but not limited to generators, vehicles, mechanized mining equipment and power tools will be fitted with an approved spark arresting device or muffler in good working order.
- The claimant will provide and maintain hand tools for fire suppression in the event of a wildland forest fire. Claimant is responsible for promptly reporting a wildland fire in the project area or along road to the project area by calling 911.
- The claimant will use spill pads when pouring fuel or other petroleum products into tanks or other containers, to catch any spillage before it reaches the soil or water. If any petroleum products are spilled into water, the operator is required to call the National Response Center at 1-800-424-8802 and the Garfield County Sheriff. If more than 10 gallons of petroleum products are spilled into soil, the operator will immediately notify the Rifle Ranger District. Contaminated soil

D. If previously undiscovered cultural resources (historic or prehistoric objects, artifacts, or sites) are exposed as a result of operations, those operations will not proceed until notification is received from the Authorized Officer that provisions for mitigating unforeseen impacts as required by 36 CFR 228.4(e) and 36 CFR 800 have been complied with.

E. This Reclamation Plan has been approved for the **2019 - 2021 field seasons (June 30 to September 30)**. A new or revised plan must be submitted in accordance with 36 CFR part 228, subpart A, if operations are to be continued after that time period.

F. Any use or activity not specifically identified in this plan must be approved by the authorized officer in the form of a new plan or plan amendment.

G. Claimant acknowledges and agrees that no mining activity including exploration or discovery may be undertaken by Claimant during reclamation activities are completed to the reasonable satisfaction of Forest Service. A new Plan of Operations expressly and specifically authorizing future mining and mining related activities must be submitted by Claimant for review and approval by the Forest Service.

OPERATING PLAN ACCEPTANCE.

I/We have reviewed and agreed to comply with all conditions in this plan of operations including the required changes, modifications, special mitigation and reclamation requirements. I/We understand that a bond will be required in advance for any new disturbance proposed in a future plan of operations and must be furnished before implementation of any future plan of operations at the Apex Mine.

Operator or Authorized Representative
John Strong

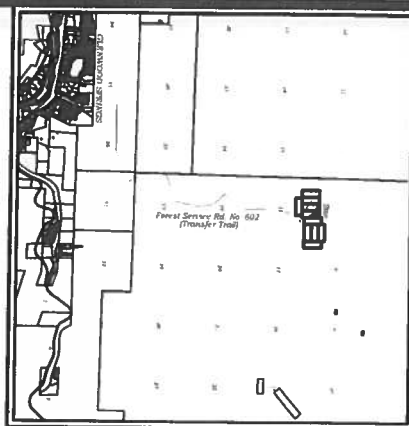
Date

RECLAMATION PLAN APPROVAL:

Forest Service Authorized Officer
Sarah Hankens, District Ranger, Rifle Ranger District

Date

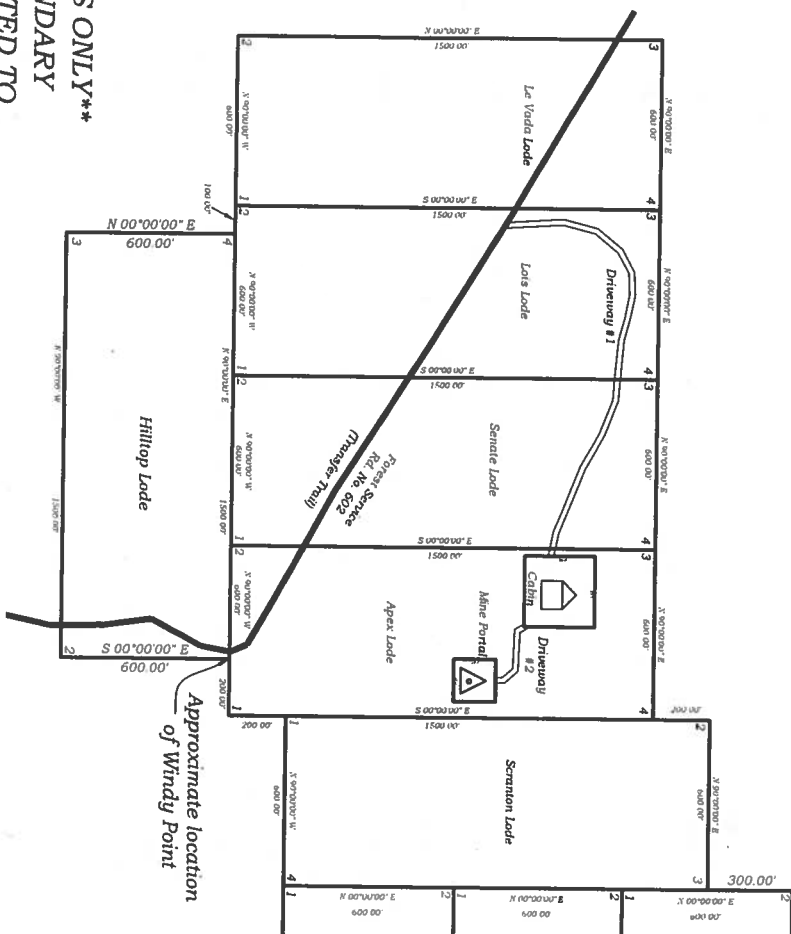
Mineral Lode Claims Located in the Hot Springs Mining District, Situate in Section 7, 8, 17 & 18, Township 5 South, Range 88 West of the 6th P.M., County of Garfield, State of Colorado



Vicinity Map
Scale: 1"=5000'

NOTES

- [illegible]



****FOR RECLAMATION ACRES ONLY****
NOT INTENDED FOR BOUNDARY
BOUNDARY WILL BE ROTATED TO
FOUND MONUMENTATION
WHEN FIELD SURVEY IS COMPLETED

APPROXIMATE CUMULATIVE DISTURBANCE AREA (2500 ± 350) =
DISTURBANCE BY 1100 FT WINDS 1571 IN LENGTH
FROM FOREST STRIPS 40 MI. 604 TO CUMULATIVE DISTURBANCE PERMETER
DRAINAGE 240 150 FT WIND 240 IN LENGTH
FROM CUMULATIVE PERMETER
APPROXIMATE WIND PERMETER DISTURBANCE AREA (150 ± 150)
APPROXIMATE TOTAL DISTURBANCE AREA

0720 ACRES
1435 ACRES
0110 ACRES
0517 ACRES
2701 ACRES

१५

HOT SPRINGS MINING DISTRICT
GEORGE STRONG
PO BOX 808
SILT, CO 81652

RECLAMATION ACREAGE EXHIBIT



REASON	DESCRIPTION