



Newmont Mining Corporation
Cripple Creek & Victor Gold Mine
100 N 3rd St
P.O. Box 191
Victor, CO 80860
www.newmont.com

SENT CERTIFIED RETURN RECEIPT REQUESTED
7018 0680 0000 4627 5620

February 5, 2019

Mr. Tim Kroening
Colorado Parks and Wildlife
4255 Sinton Road
Colorado Springs, 80907

Re: 2018 Wildlife Monitoring Plan Results

Dear Mr. Kroening:

Newmont Mining Corporation - Cripple Creek and Victor Gold Mining Company (CC&V) hereby provides the Colorado Parks and Wildlife Division (CPW) the CC&V 2018 Wildlife Monitoring Plan results.

Background:

As agreed to on December 19, 2017, within Technical Revision #91 adequacy review responses, Appendix C of the Wildlife Protection Plan states, "The monitoring period will begin in January 2018 and continue for a full year. After one year of data collection, CC&V will review findings in conjunction with CPW and identify areas of high risk and determine where mitigation is required and what actions should be taken moving forward". CC&V has spent the past year monitoring and recording wildlife sightings both on and adjacent to the mine property.

Monthly Wildlife Monitoring Log Summary

Wildlife Monitoring Logs were generated by CC&V staff based upon reports to Area Representatives by mine personnel and sightings by environmental personnel. All reports were documented in the attached monthly logs. Sighting locations remained generally consistent throughout the year. The logs show multiple sightings on multiple days throughout the month and should not be interpreted as representing one day of the month. Animals widely observed in and around active areas included coyote, deer, fox, elk, and several bird species.

Other rarely seen species included one black bear sighting southeast of WHEX Pit and CR 82 in May 2018. A second black bear sighting was reported on the "Joe Dandy" and a third sighting at a private residence north of the Globe Hill Pit in June 2018. Three bobcats were reported adjacent to active mining

areas but not on company property. These areas included Squaw Gulch, Battle Mountain (above Victor) and Victor Pass (north of Goldfield). Raptors were observed flying over company property. Bat observations were not recorded on company property.

Wildlife Sighting Maps – Appendix A

Wildlife Monitoring Maps detail sighting locations generated from the monthly logs. Some maps show highlighted areas as discrete units. Over the course of the year it became increasingly evident that there were discrete groups, particularly deer and elk, and discerning between the groups was difficult. Therefore, the highlighted areas represent the range of locations where these sightings occurred. Ranges presented in Appendix A are based on field observations and are not considered representative of the entire habitat range.

Game Camera Results – Appendix B

The game camera videos did not reveal rarely observed species such as mountain lion, bear, or bobcat and were only used during morning and twilight hours at 30 sec to 1 min intervals. In summary, deer and elk were observed with no other animals identified. As part of CC&V's ongoing wildlife stewardship and monitoring, cameras will continue to be used when animal tracks are discovered in operational areas.

Employee Training

Due to the extent of wildlife presence onsite and CC&V's commitment to minimizing employee/wildlife interaction, a wildlife training presentation was developed and presented to departments that work in areas where wildlife encounters are likely to occur.

2018 Wildlife Mortalities

No mortalities due to unknown causes occurred at CC&V in 2018. One fox was killed in a vehicle collision in the East Cresson Overburden Storage Area (ECOSA) area and two songbirds; one in the Process Solution Enhancement System (PSES) building, where it encountered a roof vent and the other flew into a window of the Security Building at the Carlton Entrance. One coyote was found off-property on HWY 67, hit by a car near the south entrance to the mine. No large ungulates were found deceased on or near mine property in 2018.

Conclusion

Wildlife sightings on and near mine property are a daily occurrence. Given the frequency of sightings and level of activity onsite, adverse encounters either by vehicular traffic or with processing chemicals are historically extremely rare. Additionally, though deer and fox roam the slopes of the Valley Leach Facilities (VLFs), they tend to stay away from active locations and travel the peripheries of the VLFs. In addition, the Adsorption Desorption Recovery facilities had no reports of ungulates encroaching into the area.

In 2018, the wildlife fence in the WHEX Pit was extended to the Grassy Valley Overlook. An additional 1,000 feet of fence was extended further down from the Overlook into Grassy Valley as well. At no time during the year-long study did CC&V personnel report wildlife inside the fence that separates the WHEX Pit highwall and County Road 82. Elk, coyote, and deer, are frequently sighted in the bottom of Grassy Valley and no encounters or incidences have been reported. Historically, and based on the 2018 monitoring study, no mortalities of any wildlife were observed due to the presence of a highwall, which thereby poses a very low risk to wildlife at CC&V.

The only wildlife group that could be identified as internal to the mine was on Raven Hill. There is a group of deer that range between the Crusher Area, Load-out Bin, and the Access Road north of the Joe Dandy Mine. Although they are frequently seen, human/vehicular encounters are rare.

Should you require further information please do not hesitate to contact Erik Munroe via phone or email at 719.689.4156 and Erik.Munroe@newmont.com, or me at 719.689.4042 and Justin.Raglin@newmont.com.

Sincerely,



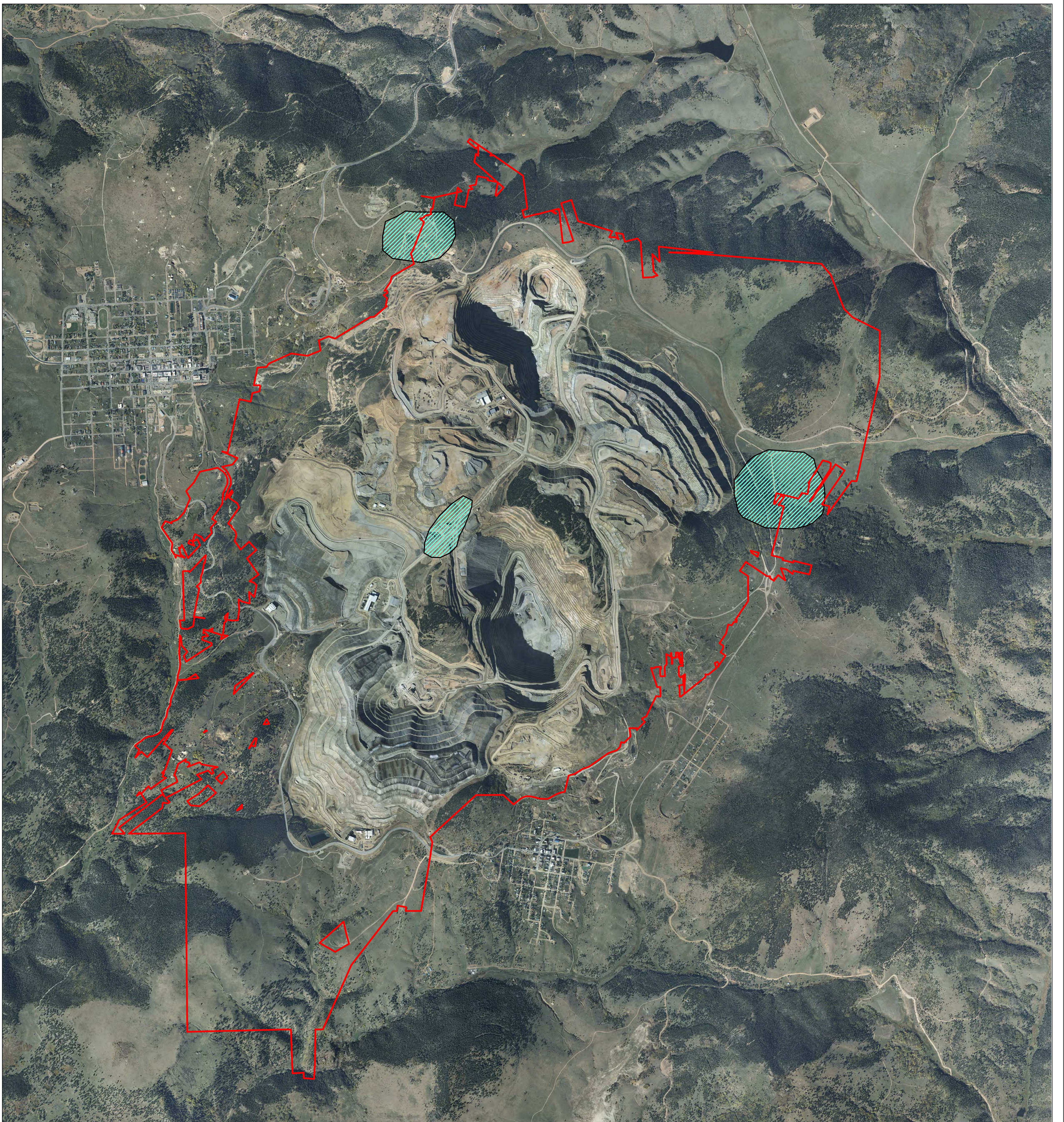
Justin Raglin
Senior Environmental Manager
Cripple Creek & Victor Gold Mining Co

JR/em

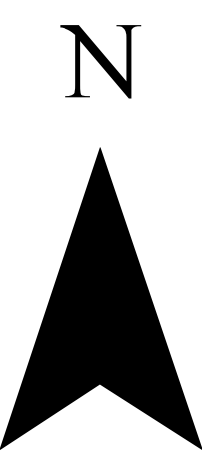
Ec: Tim Kroening - CPW

Appendix A


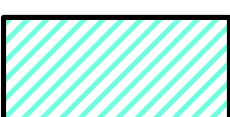
Wildlife Maps



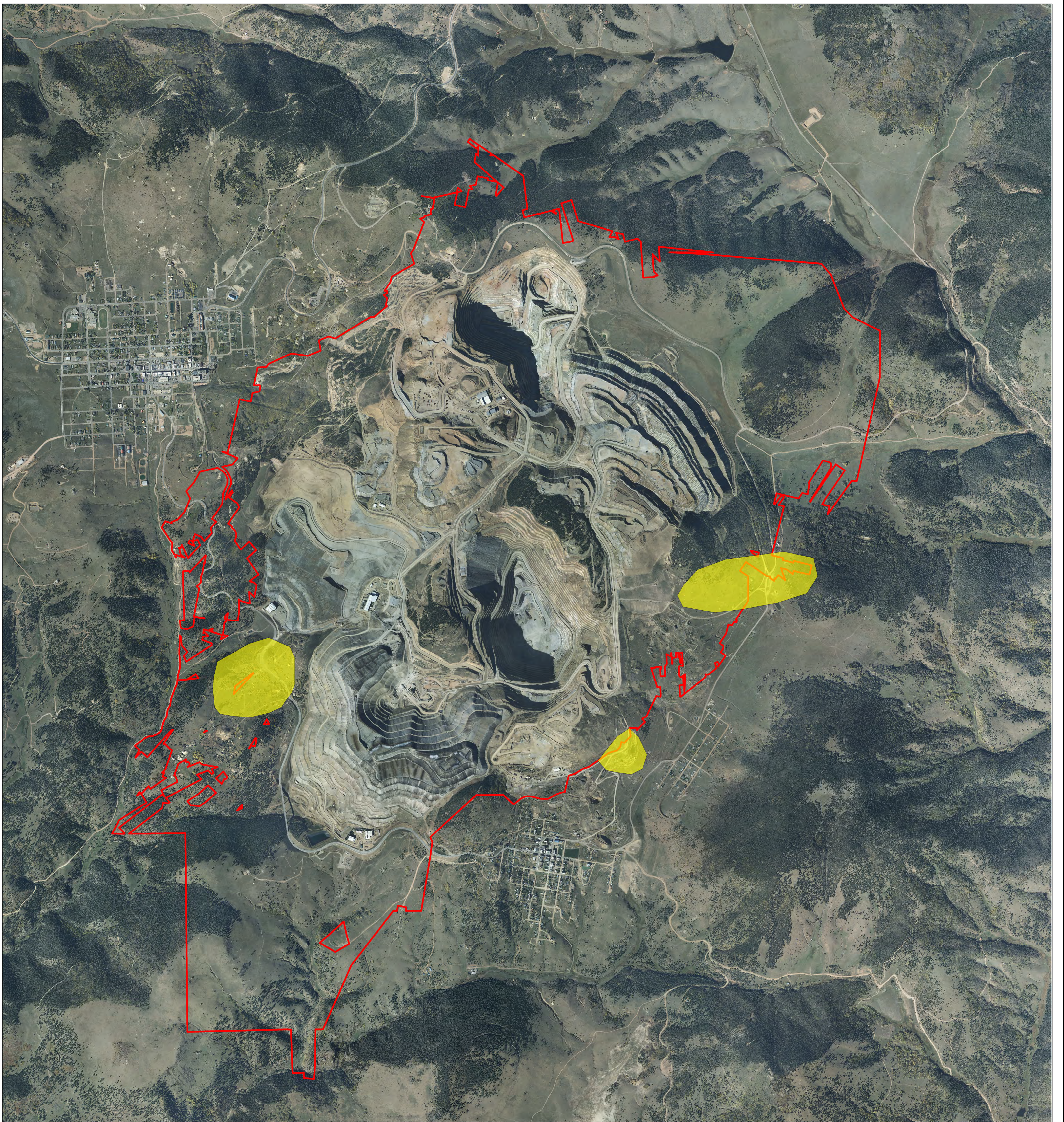
2018 Wildlife Monitoring Cripple Creek and Victor



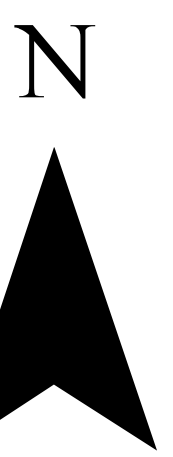
2018 Wildlife Monitoring

-  A12_Boundary
-  BlackBear_18





2018 Wildlife Monitoring Cripple Creek and Victor

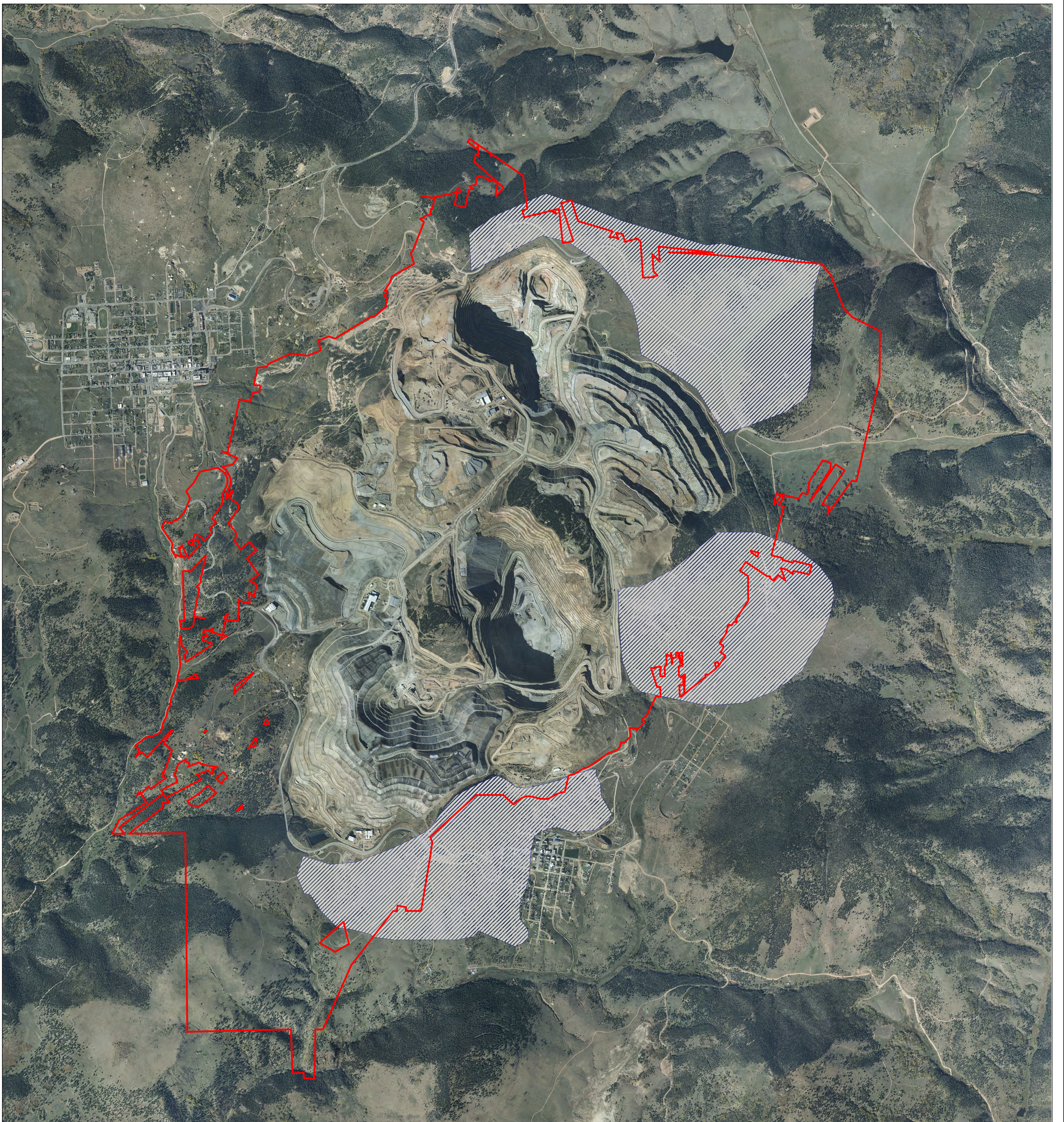


2018 Wildlife Monitoring

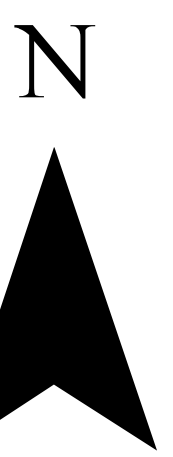
Bobcat_18

A12_Boundary





2018 Wildlife Monitoring Cripple Creek and Victor



2018 Wildlife Monitoring

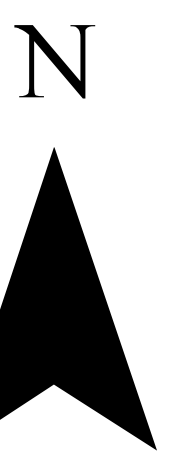
A12_Boundary

Coyote_18




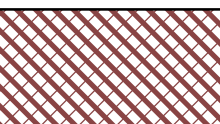


2018 Wildlife Monitoring Cripple Creek and Victor



2018 Wildlife Monitoring

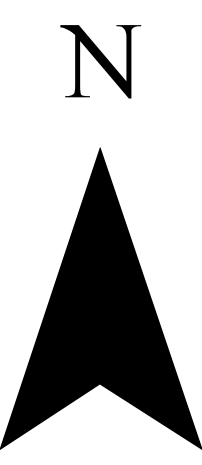
 A12_Boundary

 Deer_18





2018 Wildlife Monitoring Cripple Creek and Victor

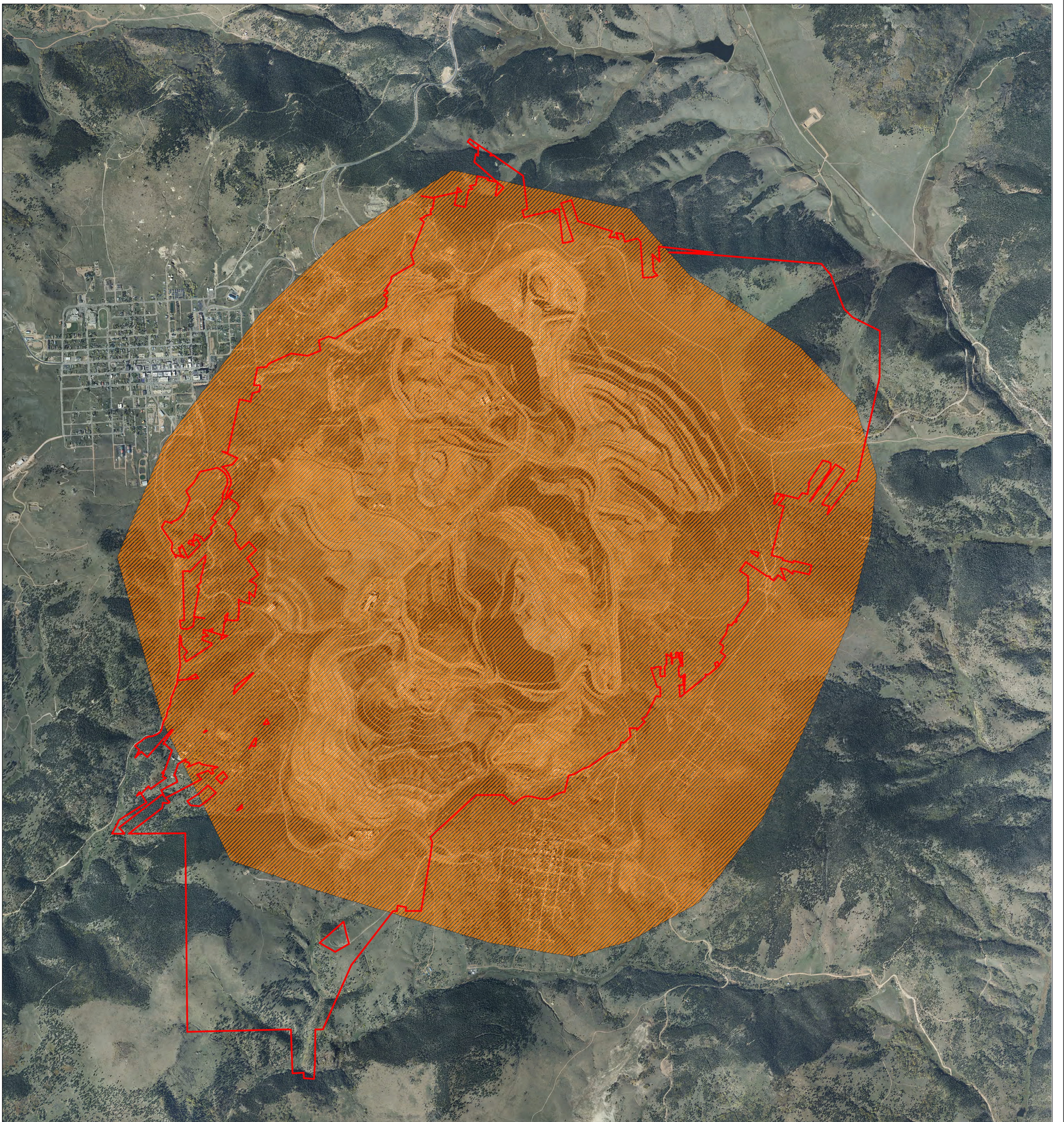


2018 Wildlife Monitoring

A12_Boundary

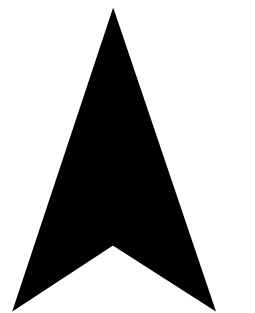
Elk_18




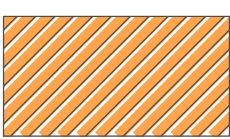


2018 Wildlife Monitoring Cripple Creek and Victor

N



2018 Wildlife Monitoring

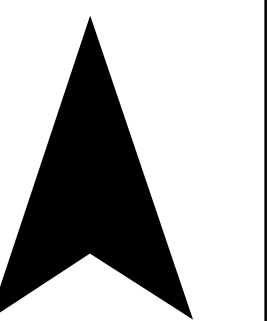
-  A12_Boundary
-  Fox_18







2018 Wildlife Monitoring Cripple Creek and Victor

N

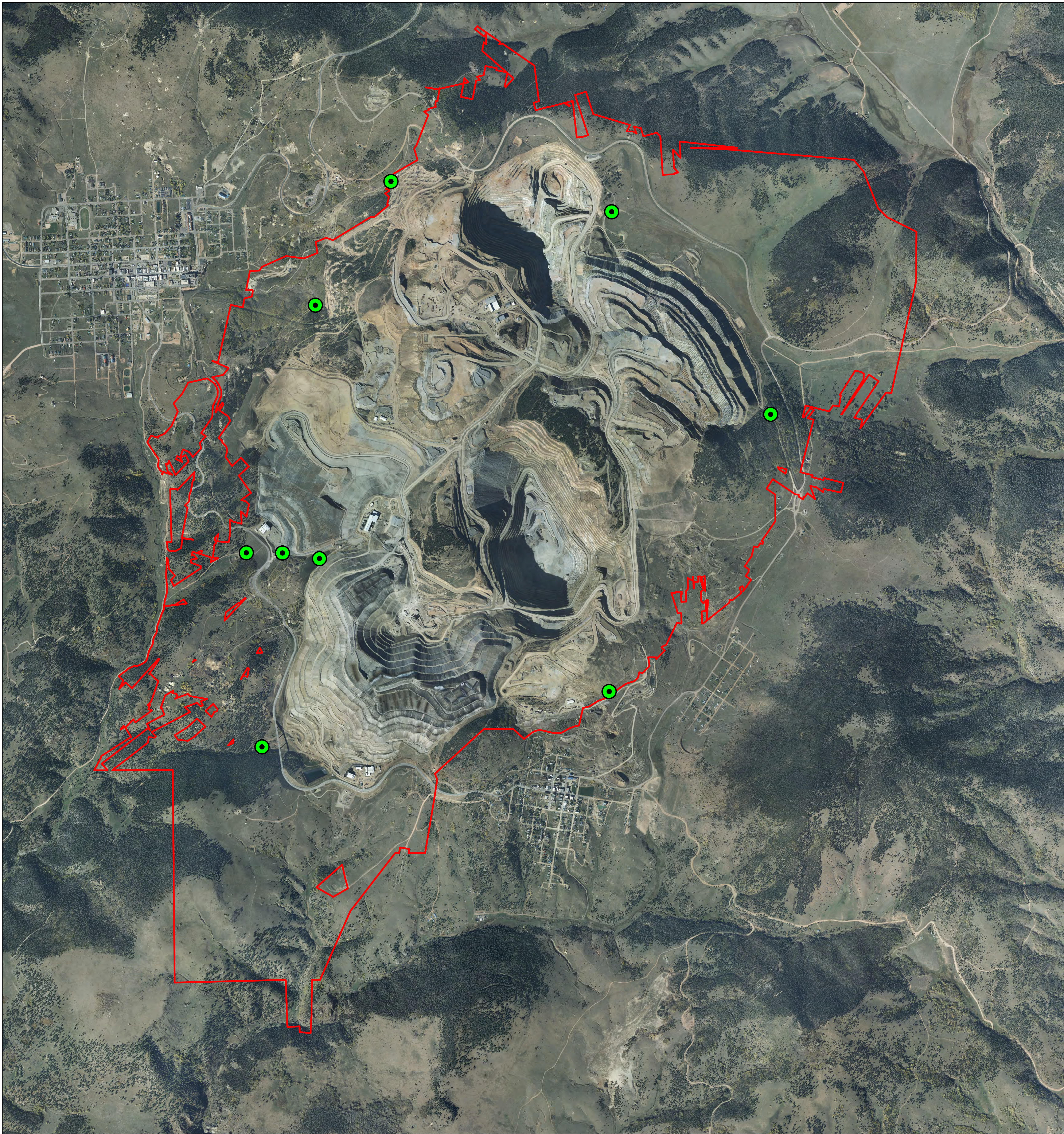


2018 Wildlife Monitoring

-  A12_Boundary
-  Raptor_18

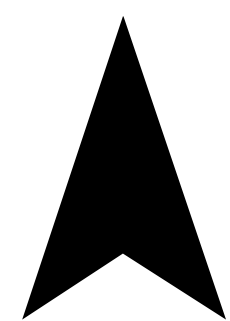


Created Jan 2019
JMR/GH





2018 Wildlife Monitoring Cripple Creek and Victor

N



2018 Wildlife Monitoring

-  GameCams
-  A12_Boundary



Appendix B

Game Camera Pictures



ADR 2



Southern End of ECOSA Overburden Storage Area



Below the Schist Island Pit on Gold Hill



At the Squaw Gulch Pumpback