

d:\d2\projects by client\loveland ready mix\bokelman_walters\annual report\2019\2019.dwg,3/29/19

NOTES:

- WEED CONTROL -- MOWING WEEDS AS NEEDED ON AREAS SEEDED WITH GRASS AND SPOT SPRAYING FOR THISTLE AND OTHER NOXIOUS WEEDS THROUGHOUT THE MINING BOUNDARY.
- DISTURBED AREAS INSIDE SLURRY WALL REPLANTED WITH GRASS SEED. WEEDS CONTROLLED WITH MOWING AND SPOT SPRAYING FOR THISTLE AND OTHER NOXIOUS WEEDS. AREAS OUTSIDE SLURRY WALL ARE FARMED.

REFERENCE:

BACKGROUND MAPPING DATA TAKEN FROM EXHIBIT C-2, REVISION 1, DATED 4/16/15 BY WEILAND, INC. AND REVISED TO CURRENT CONDITIONS.

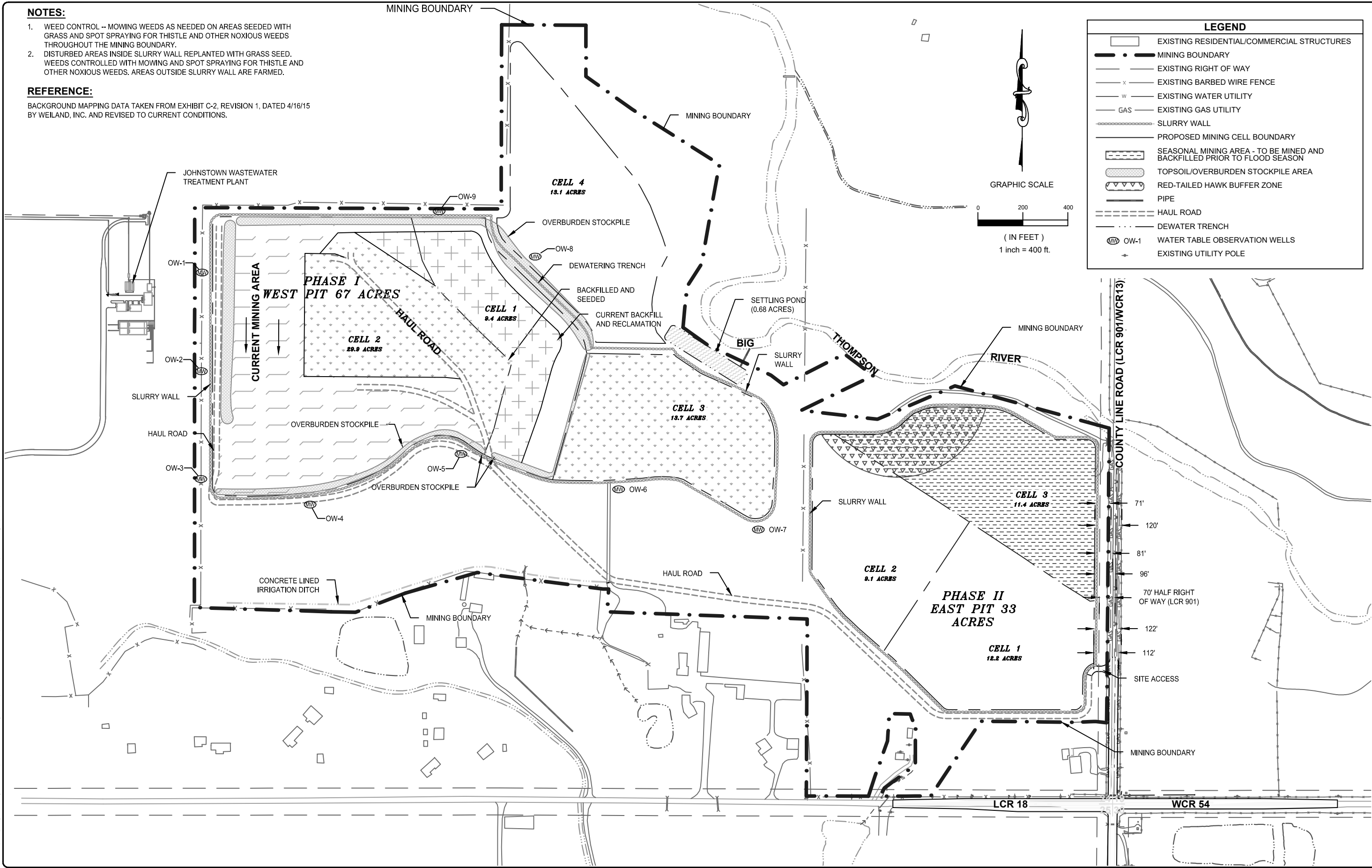


FIGURE 1

DESIGNED:

DATE:

FILE NAME:

3/29/19

3/29/19

2019

CHECKED BY:

SCALE:

SHEET NO.

SF

1" = 400'

1 of 1

DATE

REVISIONS

3/29/19

UPDATED TO CURRENT CONDITIONS

WALTERS / BOKELMAN PIT

2019 ANNUAL REPORT MAP

M-2006-080

LOVELAND READY MIX CONCRETE, INC.

LARIMER COUNTY, COLORADO

720.722.2306

www.d2CAD.com