

Question 22.

2017 RECLAMATION MAPS

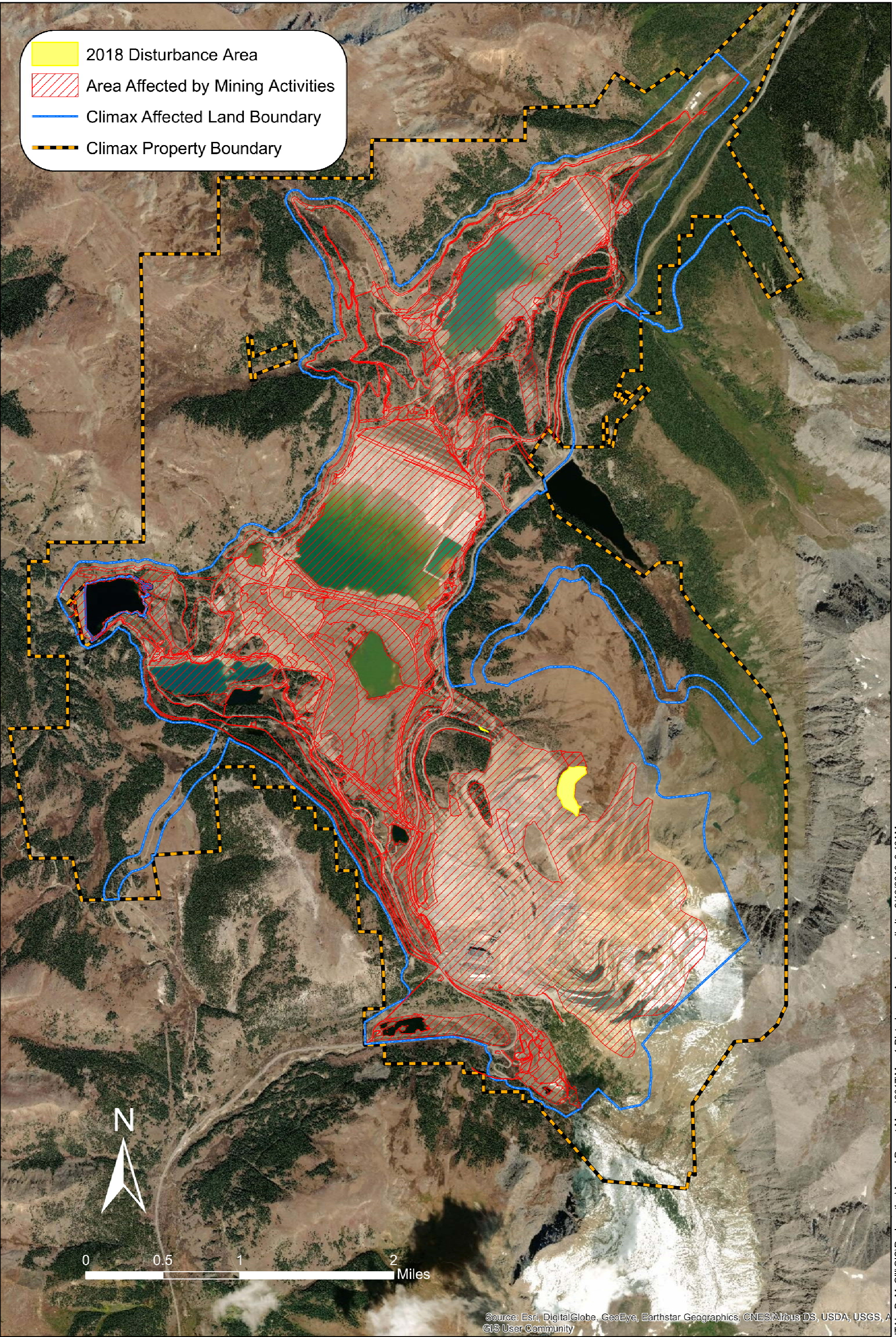
Map 1 – Depicts the permit boundary, current affected area boundary, the acreage currently affected, and any acreage disturbed in the reporting year.

Map 2 – Depicts the total acreage that has been reclaimed and the acreage where reclamation is in progress.

Map 3 – Depicts the acreage where reclamation is in progress that has been graded and/or covered with topsoil.

Map 4 – Depicts the acreage where reclamation is in progress that has been seeded, mulched, or fertilized.

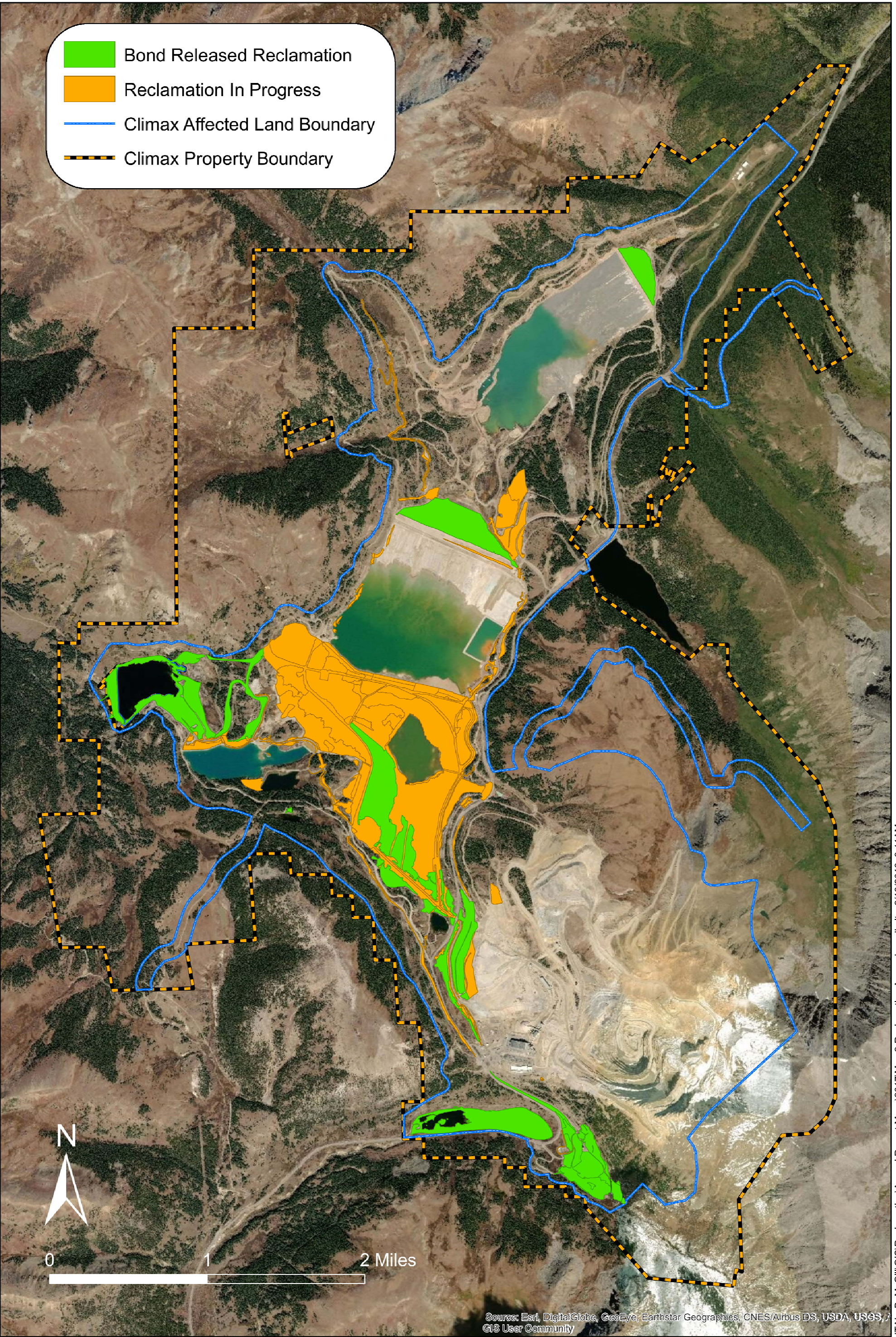
Weed Control Maps – As described in question 14, maps describing where and what treatments were provided.




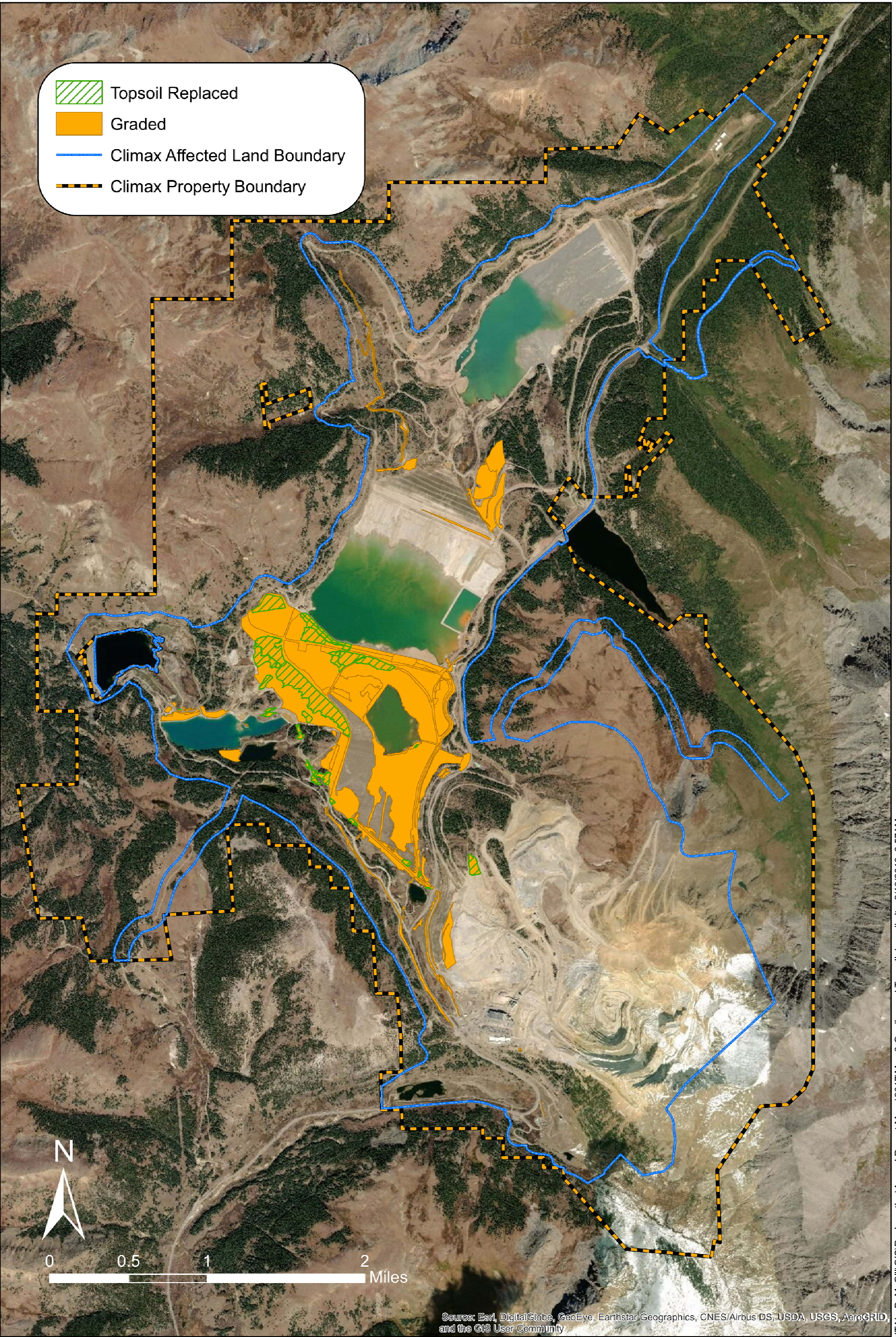
REVISIONS				CLIMAX OPERATIONS		DIVISION: ENVIRONMENTAL DEPT.	
REV No		BY	DATE	SCALE: 1: 35,000	SHEET SIZE: ANSIB	AREA:	
A	MODIFIED LAYOUT	JH	2/14/18	ENG'D BY:	DATE:	TITLE:	DWG. NO.
1				DWN BY: JH	DATE: 2/14/18	2018 ANNUAL REPORT MAP 1 - DISTURBANCE AREAS	
2				CHKD BY: JH	DATE: 2/15/18		REVISION:
3				APVD BY: DK	DATE:		SHT. OF



CLIMAX Molybdenum
A Freeport-McMoRan Company



REVISIONS				SCALE: 1: 35,000	SHEET SIZE ANSI B	CLIMAX OPERATIONS			DIVISION:	
REV No		BY	DATE	ENG'D BY:	DATE:	<div>Climax Molybdenum A Freeport-McMoRan Company</div>			AREA:	
/A	MODIFIED LAYOUT	JH	2/14/18	DWN BY: JH	DATE: 02/14/2018				TITLE:	2018 ANNUAL REPORT MAP 2 - RECLAMATION AREAS
/1				CHKD BY:	DATE:				DWG. NO.	
/2				APVD BY:	DATE:				REVISION:	
/3									SHT.	OF

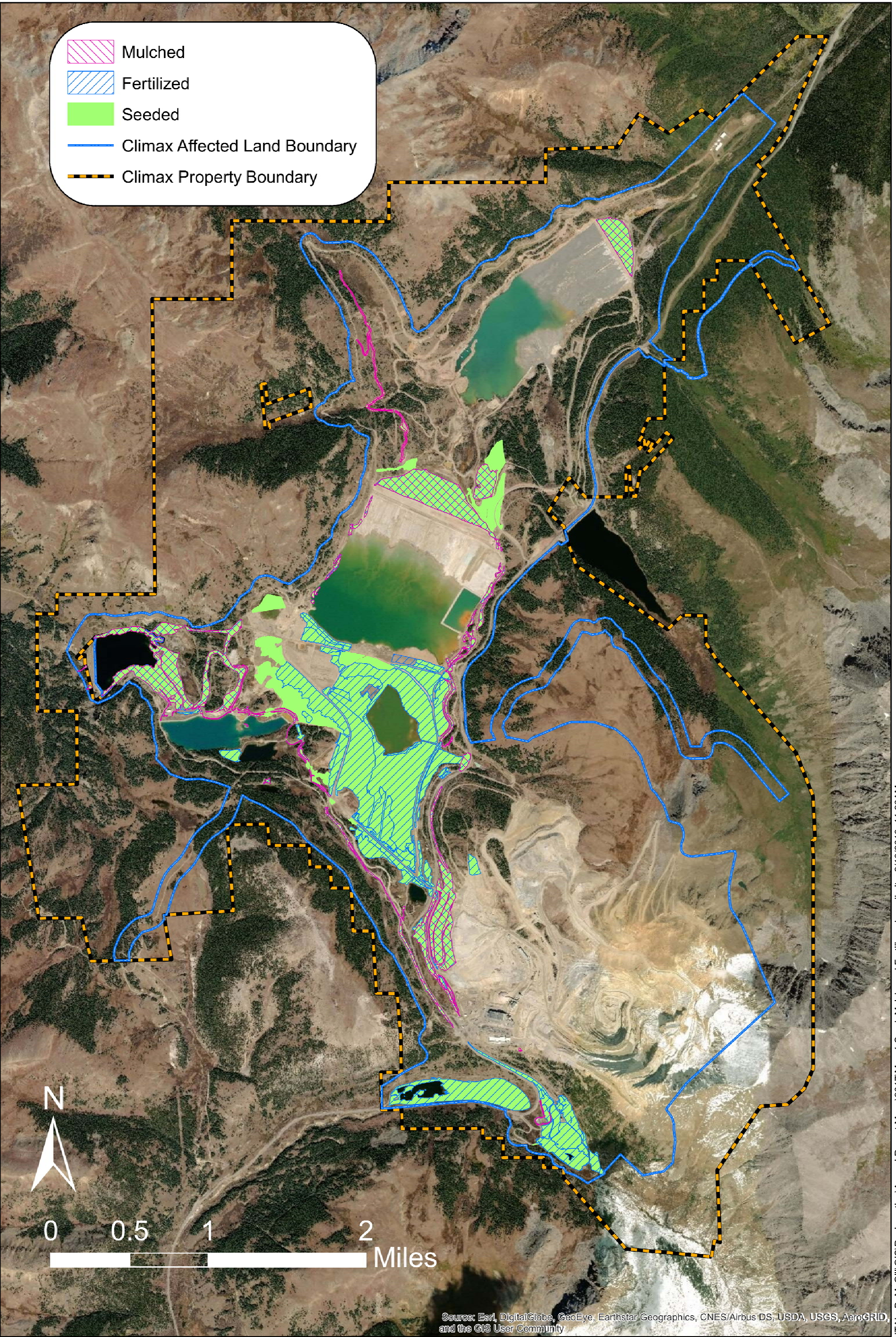


Source: Esri, DigitalGlobe, GeoEye, Earthstar Geographics, CNES/Airbus DS, USDA, USGS, AeroGRID, and the GIS User Community

REVISIONS				CLIMAX OPERATIONS		DIVISION: ENVIRONMENTAL DEPT.	
REV No		BY	DATE	SCALE: 1:35,000	SHEET SIZE: ANSIB	AREA:	
A	MODIFIED LAYOUT	JD	2/15/18	ENG'D BY:	DATE:	TITLE:	DWG. NO.
1				DWN BY: JD	DATE: 2/15/18	2018 ANNUAL REPORT MAP 3 - GRADING AND TOPSOIL	
2				CHKD BY: JH	DATE: 2/15/18		REVISION:
3				APVD BY: DK	DATE:		SHT. OF



A Freeport-McMoRan Company



REVISIONS				SCALE: 1:35,000		SHEET SIZE: ANSIB		DIVISION: ENVIRONMENTAL DEPT.	
REV No		BY	DATE	ENGD BY:	DATE:			AREA:	
A	MODIFIED LAYOUT	JD	2/15/18					TITLE:	
1				DWN BY: JD	DATE: 2/15/18	<div>CLIMAX OPERATIONS</div> <div> Climax Molybdenum</div> <div>A Freeport-McMoRan Company</div>		2018 ANNUAL REPORT MAP 4 - SEED, MULCH, AND FERTILIZER	
2				CHKD BY: JH	DATE: 2/15/18				
3				APVD BY: DK	DATE:				
								DWG. NO.	
								REVISION:	
								SHT. OF	



Legend

Species

- Plumeless thistle
- Scotch thistle
- Musk thistle
- Mayweed chamomile
- Perennial pepperweed
- Oxeye daisy
- Canada thistle
- Yellow toadflax

0 0.2 0.4 0.8 Miles



Climax Mine

2018 Herbicide Treatment Locations -Map 2



www.habitatmanagementinc.com

Drawn by: JF

Date: 11/06/2018

REVISIONS



Legend

Species

- Plumeless thistle
- Scotch thistle
- Musk thistle
- Mayweed chamomile
- Perennial pepperweed
- Oxeye daisy
- Canada thistle
- Yellow toadflax

0 0.2 0.4 0.8 Miles



Climax Mine

2018 Herbicide Treatment Locations -Map 3



Drawn by: JF

Date: 11/06/2018

REVISIONS



Legend

Species

- Plumeless thistle
- Scotch thistle
- Musk thistle
- Mayweed chamomile
- Perennial pepperweed
- Oxeye daisy
- Canada thistle
- Yellow toadflax

0 0.2 0.4 0.8 Miles



Climax Mine

2018 Herbicide Treatment Locations -Map 4



www.habitatmanagementinc.com

Drawn by: JF

Date: 11/06/2018

REVISIONS

