



LEGEND			
	PERMIT / AFFECTED AREA PRIOR TO 2017 RELEASE		
	GRAVEL / SERVICE ACCESS		
	VEGETATED AREA		
	GRADED AND SEEDING		
	GRAVEL		
	EXISTING STRUCTURE TO REMAIN		
	CURRENT PERMIT / AFFECTED AREA BOUNDARY		

REFERENCE:

WINTER / CENTER IMAGE PROVIDED BY TERRASERVER AND WAS FLOWN 3/2/16.
SURROUNDING IMAGERY PROVIDED BY USDA/FSA - AERIAL PHOTOGRAPHY FIELD OFFICE AND WAS FLOWN 10/28/15.

GRAPHIC SCALE

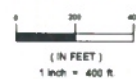


FIGURE
1

DATE	REVISIONS
8/10/16	1
8/10/16	2
8/10/16	3
8/10/16	4
8/10/16	5
8/10/16	6
8/10/16	7
8/10/16	8
8/10/16	9
8/10/16	10
8/10/16	11
8/10/16	12
8/10/16	13
8/10/16	14
8/10/16	15
8/10/16	16
8/10/16	17
8/10/16	18
8/10/16	19
8/10/16	20
8/10/16	21
8/10/16	22
8/10/16	23
8/10/16	24
8/10/16	25
8/10/16	26
8/10/16	27
8/10/16	28
8/10/16	29
8/10/16	30
8/10/16	31
8/10/16	32
8/10/16	33
8/10/16	34
8/10/16	35
8/10/16	36
8/10/16	37
8/10/16	38
8/10/16	39
8/10/16	40
8/10/16	41
8/10/16	42
8/10/16	43
8/10/16	44
8/10/16	45
8/10/16	46
8/10/16	47
8/10/16	48
8/10/16	49
8/10/16	50
8/10/16	51
8/10/16	52
8/10/16	53
8/10/16	54
8/10/16	55
8/10/16	56
8/10/16	57
8/10/16	58
8/10/16	59
8/10/16	60
8/10/16	61
8/10/16	62
8/10/16	63
8/10/16	64
8/10/16	65
8/10/16	66
8/10/16	67
8/10/16	68
8/10/16	69
8/10/16	70
8/10/16	71
8/10/16	72
8/10/16	73
8/10/16	74
8/10/16	75
8/10/16	76
8/10/16	77
8/10/16	78
8/10/16	79
8/10/16	80
8/10/16	81
8/10/16	82
8/10/16	83
8/10/16	84
8/10/16	85
8/10/16	86
8/10/16	87
8/10/16	88
8/10/16	89
8/10/16	90
8/10/16	91
8/10/16	92
8/10/16	93
8/10/16	94
8/10/16	95
8/10/16	96
8/10/16	97
8/10/16	98
8/10/16	99
8/10/16	100

d2CAD
Consulting
(720) 722-2396
<http://www.d2CAD.com>

CASTLEROCK
CONSULTING LLC

Chris R. R. R.

**CAÑON CITY
AREA MAP**

FREMONT COUNTY, COLORADO

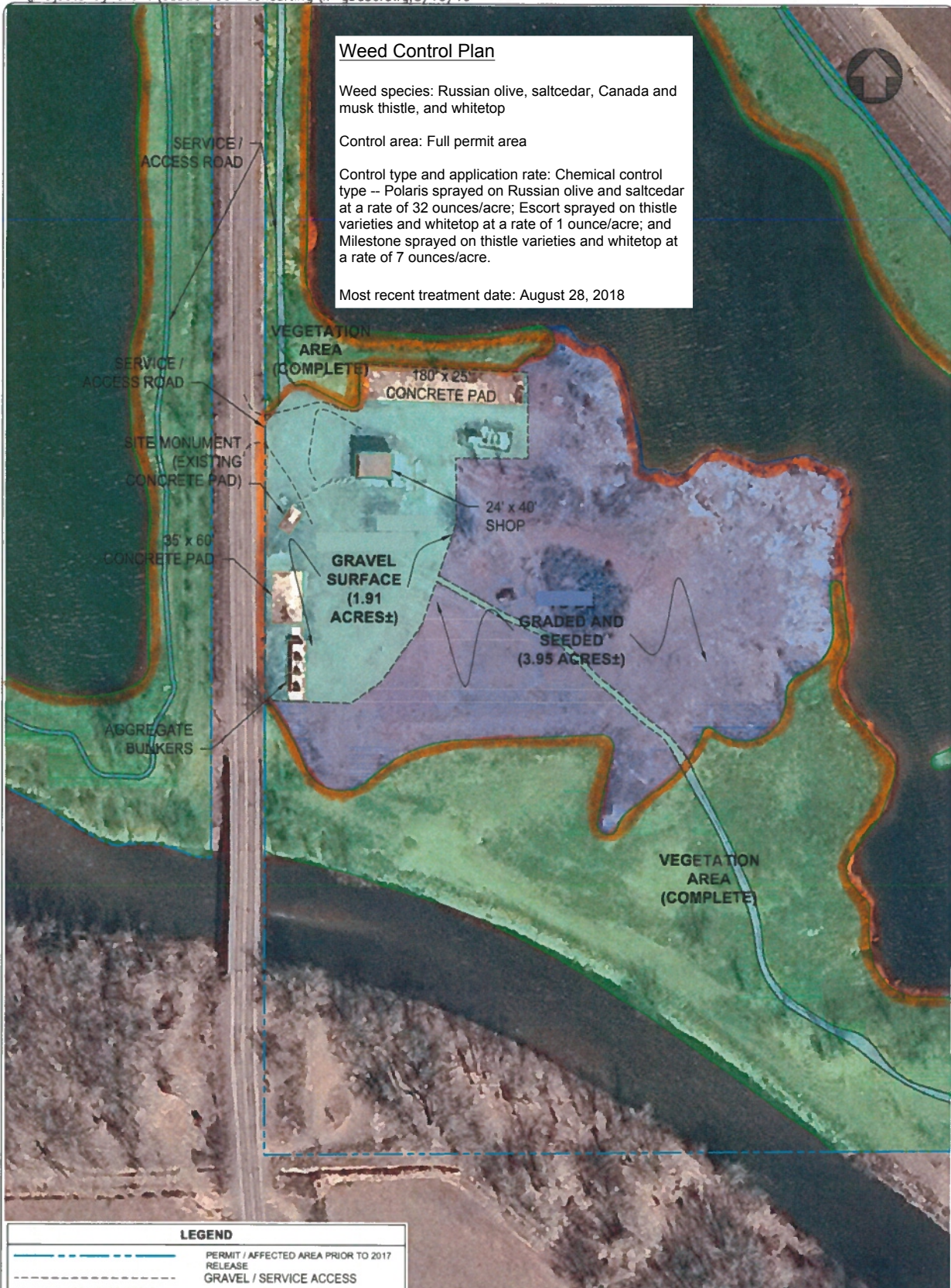
Weed Control Plan

Weed species: Russian olive, saltcedar, Canada and musk thistle, and whitetop

Control area: Full permit area

Control type and application rate: Chemical control type -- Polaris sprayed on Russian olive and saltcedar at a rate of 32 ounces/acre; Escort sprayed on thistle varieties and whitetop at a rate of 1 ounce/acre; and Milestone sprayed on thistle varieties and whitetop at a rate of 7 ounces/acre.

Most recent treatment date: August 28, 2018



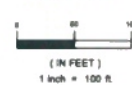
LEGEND

	PERMIT / AFFECTED AREA PRIOR TO 2017 RELEASE
	GRAVEL / SERVICE ACCESS
	VEGETATED AREA
	GRADED AND SEEDED
	GRAVEL
	EXISTING STRUCTURE TO REMAIN
	CURRENT PERMIT / AFFECTED AREA BOUNDARY

REFERENCE:

IMAGERY PROVIDED BY TERRASERVER AND WAS FLOWN 3/2/16.

GRAPHIC SCALE



FIGURE

2

NO.	DATE	BY	REVISION
1	8/10/16	DP	Initial Design
2	8/10/16	DP	Final Design
3	8/10/16	DP	Final Design
4	8/10/16	DP	Final Design
5	8/10/16	DP	Final Design
6	8/10/16	DP	Final Design
7	8/10/16	DP	Final Design
8	8/10/16	DP	Final Design
9	8/10/16	DP	Final Design
10	8/10/16	DP	Final Design

d2CAD
Consulting
(720) 722-2396
http://www.d2CAD.com

CASTLEROCK
CONSULTING LLC
Chris R. Rios

CAÑON CITY
DETAILED RECLAMATION AREA

FREMONT COUNTY, COLORADO