

Peters

Peters Pit
Mining Plan
Pit depth 15-20 ft.

Working from North to South using a
dozer & loader users going to scrape off
12-20 inches of topsoil. Packing the topsoil
to the east boundary of pit. Then
users going to push off another 12-20 inches
of overburden right west of topsoil. We then
down the hill to make sufficient room for the
operation. Then users simply going to
back gravel down hill & create simple with a
loader. I will 20 ft for topsoil & 30 ft for overburden.
Beds the hill this should work really well for reclamation.
Topsoil, Overburden gravel will all be placed in it.

Pit Scale
1" = 50 ft.

Pit Scale
1" = 50 ft.

1.5
ACRES
MINED IN 1992

ESTABLISHED MINING FOOT
1993

2005 MINING

2002 MINING

OVERBURDEN PILE
TOP SOIL PILE

Overburden Stockpile
Topsoil Stock Pile

(Note)
existing trail on top to Coaly
Road & after 500 ft

500 ft Road

510 ft from fence
plot to SCALE

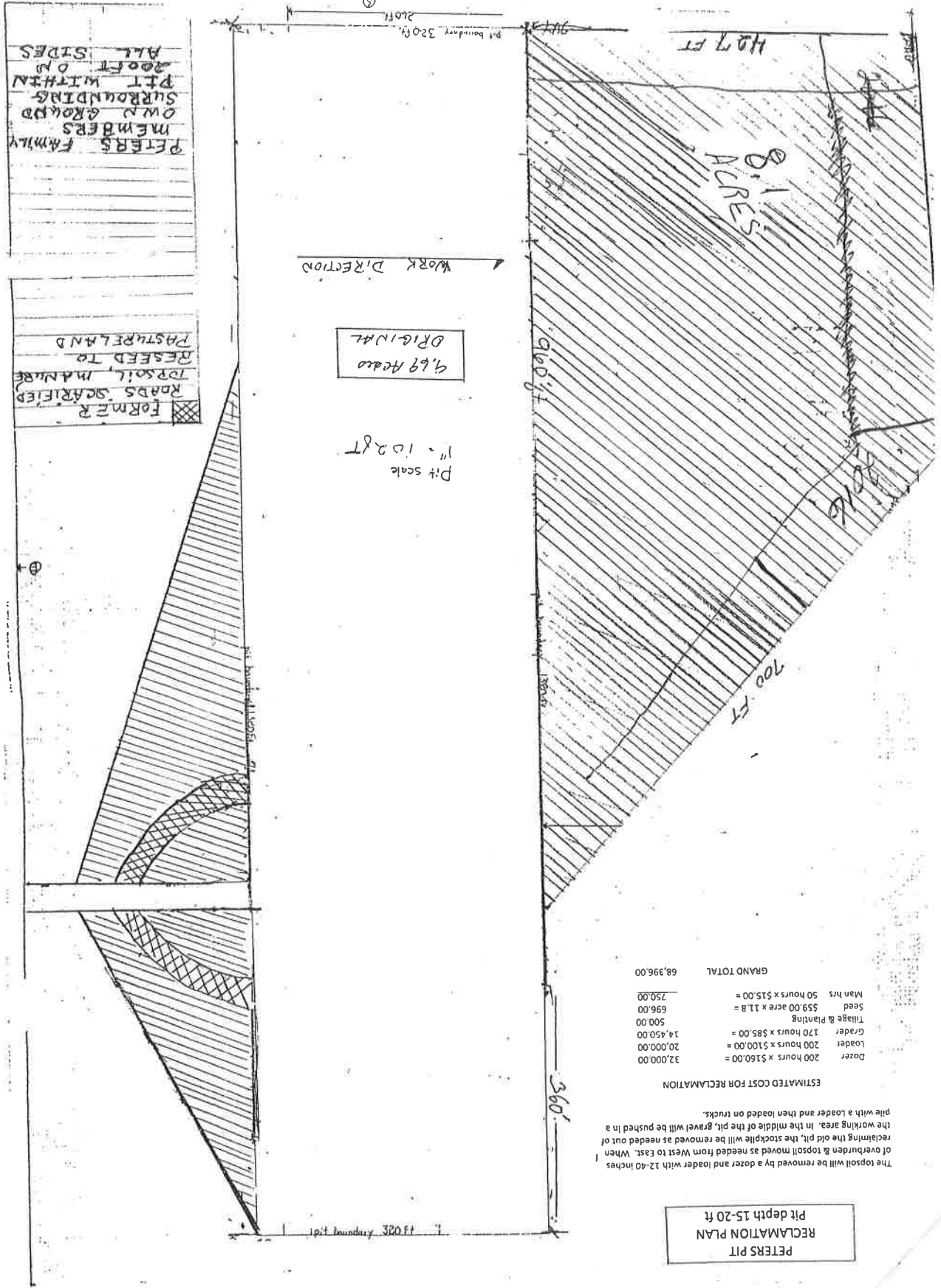
Section line Not to Scale

Not to
Scale

1.5 ACRES MINED IN 1992 ESTABLISHED MINING FOOT 1993	OVERBURDEN PILE TOP SOIL PILE
---	----------------------------------

11/11/2004

DONALD OSWALD
1-18-2011



ESTIMATED COST FOR RECLAMATION

Dozer	200 hours x \$160.00 =	32,000.00
Loader	200 hours x \$100.00 =	20,000.00
Grader	170 hours x \$85.00 =	14,450.00
Tillage & Planting		500.00
Seed	\$59.00 acre x 11.8 =	696.00
Man hrs	50 hours x \$15.00 =	750.00
GRAND TOTAL		68,396.00

The topsoil will be removed by a dozer and loader with 12-40 inches of overburden & topsoil moved as needed from West to East. When reclaiming the old pit, the stockpile will be removed as needed out of the working area. In the middle of the pit, gravel will be pushed in a pile with a loader and then loaded on trucks.

PETERS PIT
RECLAMATION PLAN
Pit depth 15-20 ft