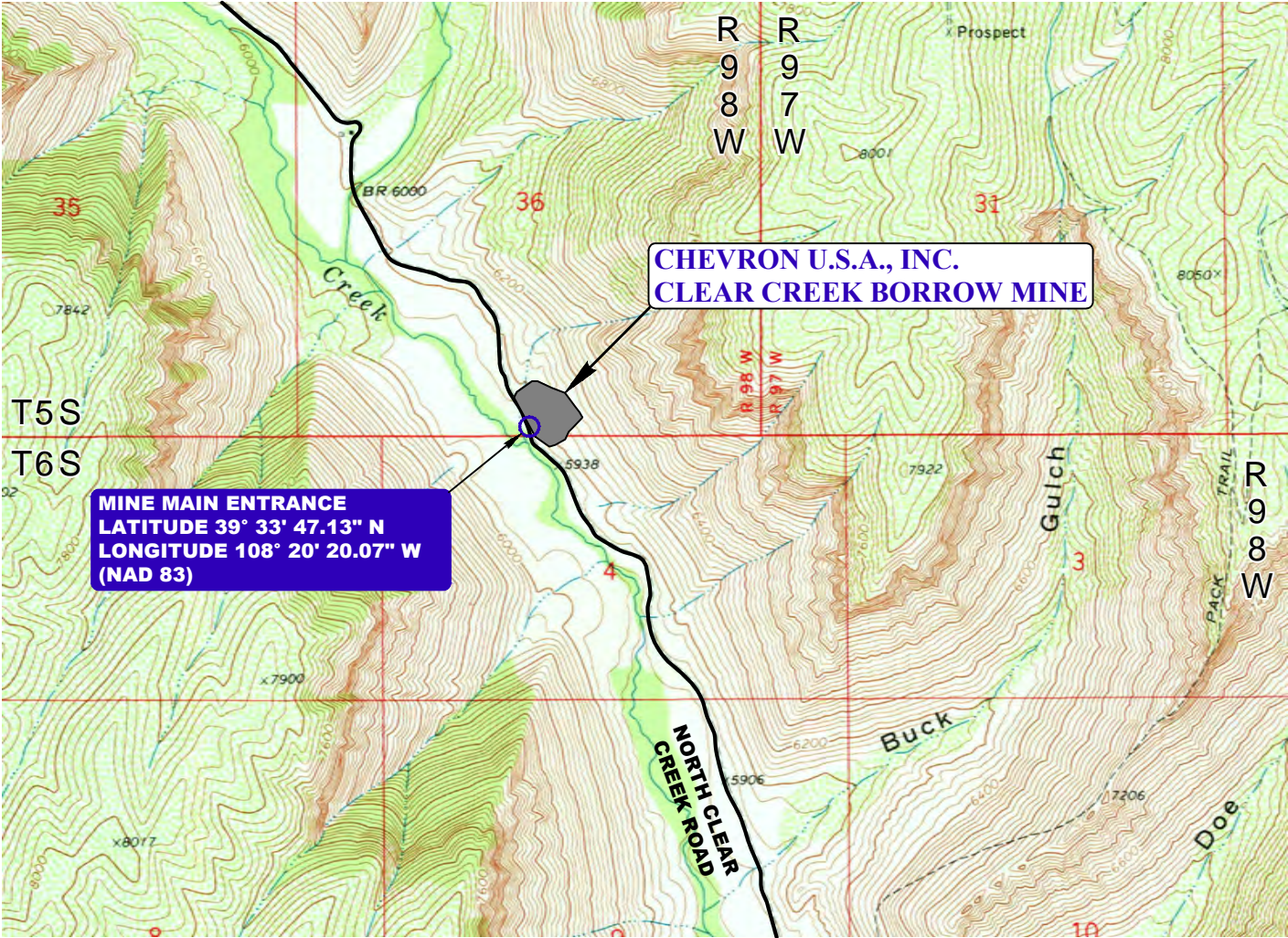


CHEVRON U.S.A., INC.

CLEAR CREEK BORROW MINE

LOCATED IN:
SECTION 36, T5S, & SECTION 4, T6S, R98W, 6th P.M.
GARFIELD COUNTY, COLORADO

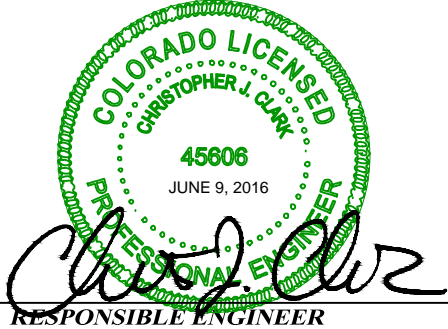
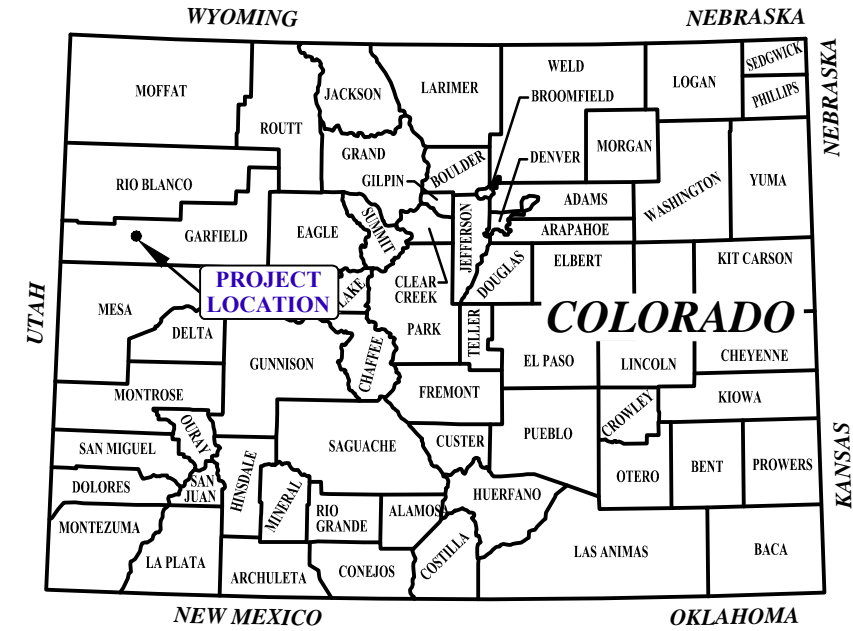
LOCATION MAP



SOURCE: 7.5 MIN TOPOGRAPHIC MAP, MOUNT BLAINE (U.S.G.S, 1971)
SCALE: 1:24,000 (1" = 2,000')

SHEET INDEX

TITLE SHEET	1
EXHIBIT E - MINING MAP	2
EXHIBIT E - RECLAMATION MAP	3



CHEVRON U.S.A., INC.

CLEAR CREEK BORROW MINE
SEC. 36, T5S, & SEC. 4, T6S, R98W, 6TH P.M.

TITLE SHEET

DATE	BY	REVISIONS

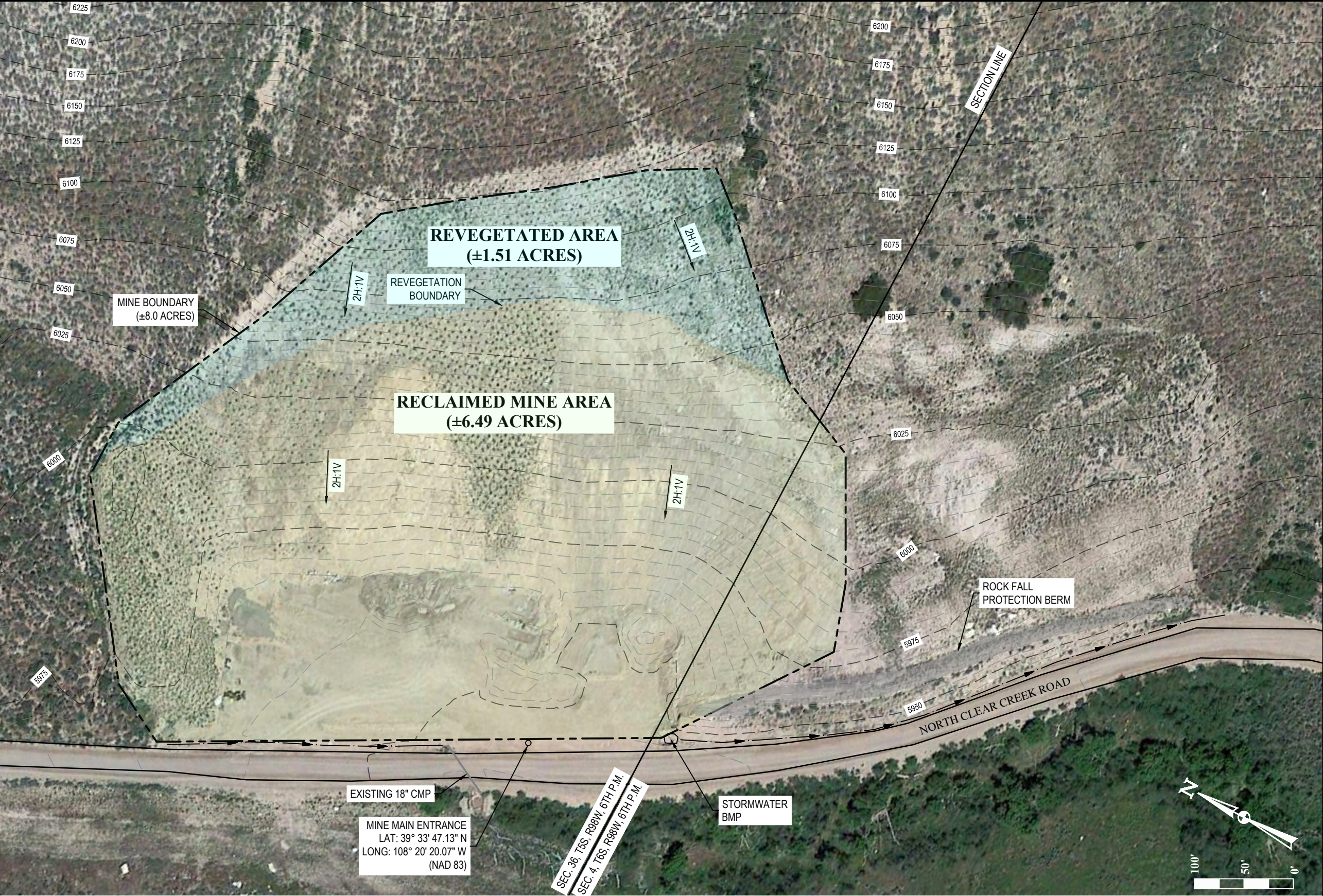
SCALE: AS SHOWN
DRAWN BY: B.W.W.
DATE DRAWN: 7 JUNE 2016
UELS FILE NO.: C - 5 2 0 4
PROJ. NO: CHE02-16-0012



CIVIL ENGINEERING AND
LAND SURVEYING SERVICES

85 South 200 East, Vernal, UT 84078
O: 435.789.1017
www.uintahgroup.com

- SINCE 1964 -



RECLAMATION MAP NOTES

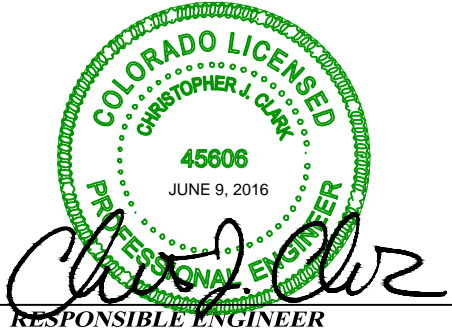
- 1. REVEGETATED AREA HAS BEEN RECLAIMED USING POCKETING METHODS TO ESTABLISH SHRUB GROWTH.
- 2. AS MINING OPERATIONS CONTINUE, PARTS OF THE ACTIVE MINE AREA WILL BE RECLAIMED USING POCKETING METHODS TO ESTABLISH SHRUB GROWTH.
- 3. THERE ARE NO PONDS AT THIS SITE.
- 4. THERE IS NO OVERBURDEN TO BE REPLACED.
- 5. 3 INCHES TO 6 INCHES OF TOPSOIL WILL BE REPLACED IN ALL RECLAIMED/REVEGETATED AREAS.

MINE BOUNDARY DESCRIPTION

- 1. THE MINING BOUNDARY IS DESCRIBED AS BEING LOCATED IN TRACT 108 OF SECTION 4, T6S, R98W, 6TH P.M. AND THE SE 1/4 SW 1/4 AND SW 1/4 SE 1/4 OF SECTION 36, T5S, R98W, 6TH P.M.

LEGEND

- 0000 EXISTING MAJOR CONTOURS (25' INTERVAL)
- 0000 EXISTING MAJOR CONTOURS (25' INTERVAL)
- MINE BOUNDARY
- REVEGETATION BOUNDARY
- EXISTING EDGE OF ROAD
- DRAINAGE - FLOW DIRECTION



CHEVRON U.S.A., INC.

CLEAR CREEK BORROW MINE
SEC. 36, T5S, & SEC. 4, T6S, R98W, 6TH P.M.

EXHIBIT E - RECLAMATION MAP

DATE	BY	REVISIONS

SCALE: 1" = 100'
DRAWN BY: B.W.W.
DATE DRAWN: 7 JUNE 2016
UELS FILE NO.: C - 5 2 0 4
PROJ. NO: CHE02-16-0012



CIVIL ENGINEERING AND
LAND SURVEYING SERVICES
85 South 200 East, Vernal, UT 84078
O: 435.789.1017
www.uintahgroup.com
- SINCE 1964 -

SHEET
3
OF 3