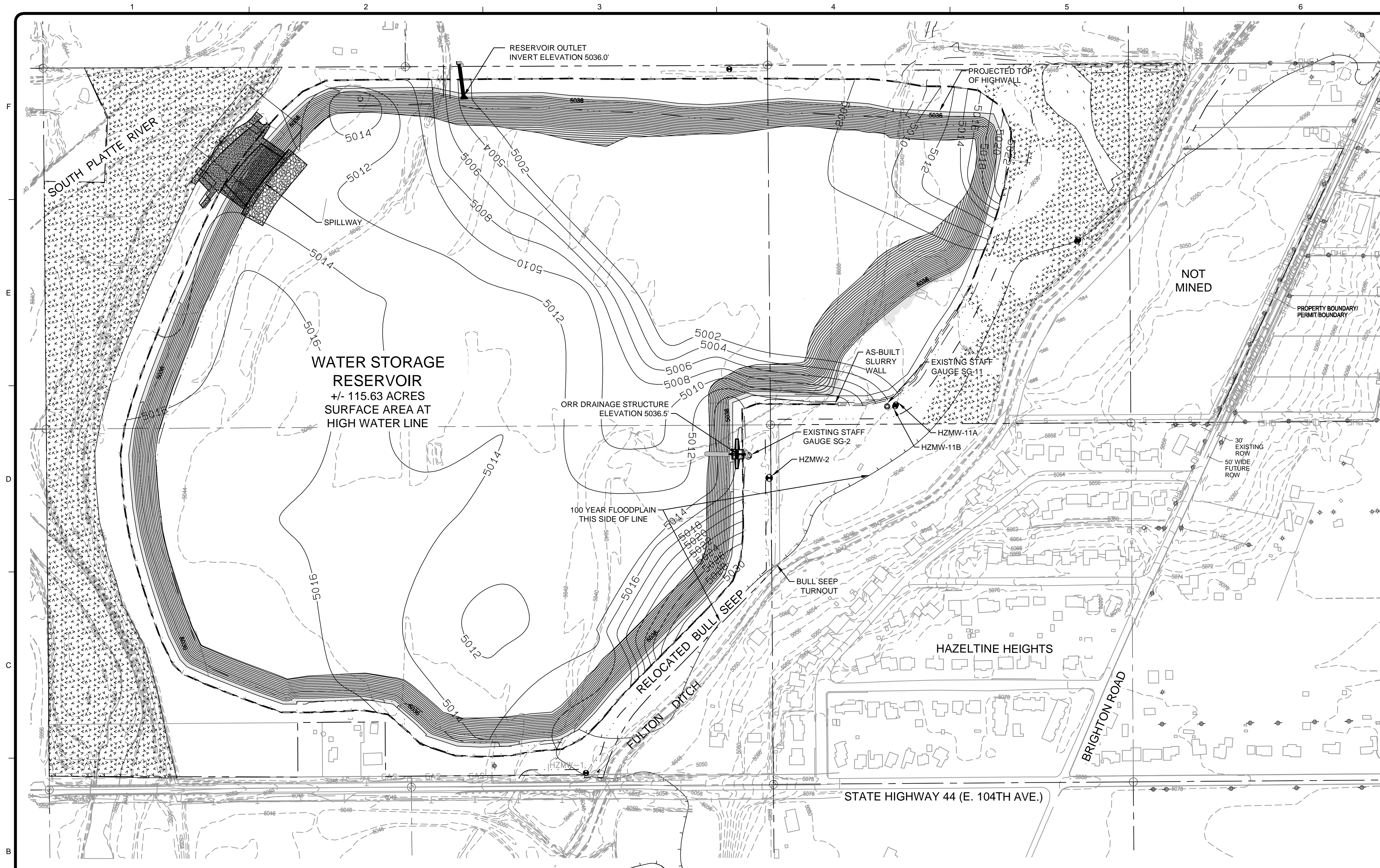
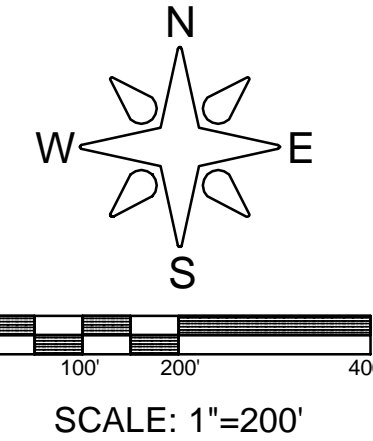


9/21/2016 10:26:56 AM - P:\23514\133-23514-16002\CAD\CONCEPTUAL\EXH-1_MONITORING.DWG - RAINWATER, BUSTER



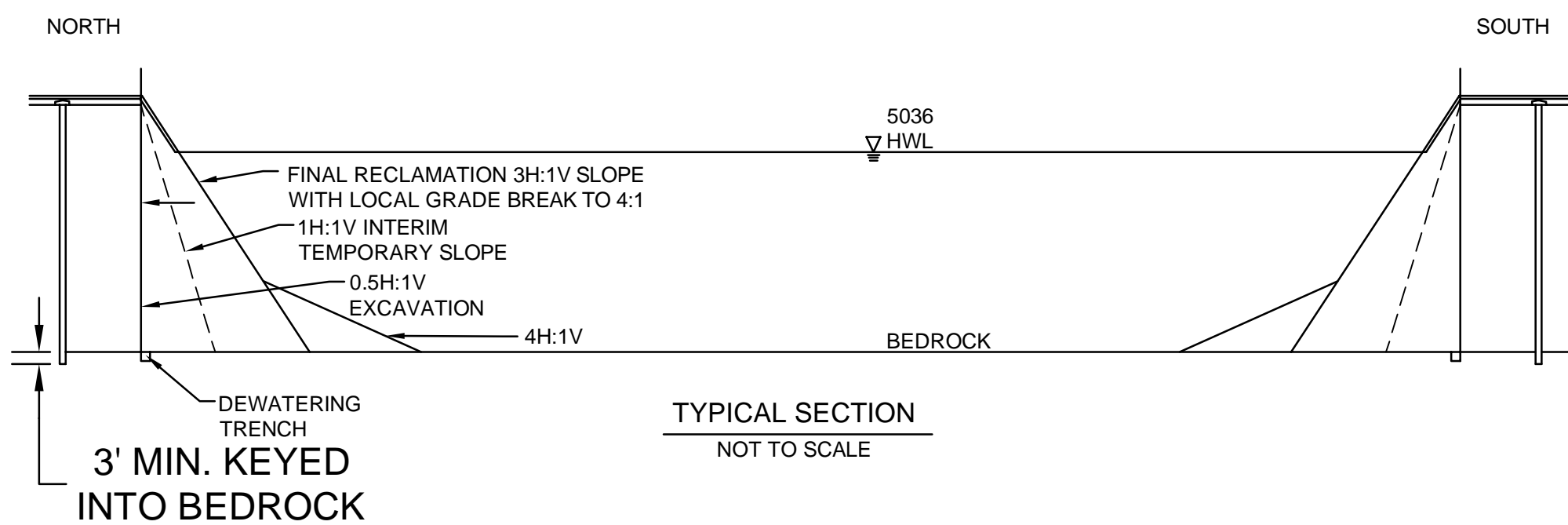
HAZELTINE MINE MLRB 112 PERMIT RECLAMATION MAP

A TRACT OF LAND LOCATED IN THE
SOUTH HALF OF SECTION 9, TOWNSHIP
2 SOUTH, RANGE 67 WEST OF THE 6TH
P.M., COUNTY OF ADAMS, STATE OF
COLORADO. CONTAINING 204+/- ACRES



LEGEND:

- PROPERTY BOUNDARY/
PERMIT BOUNDARY
- APPROXIMATE BEDROCK
CONTOUR
- PRE-MINING 2' CONTOUR
- SLURRY WALL
- APPROXIMATE HIGH WATER
LINE OF RECLAIMED POND
- U.S. ARMY CORP OF ENGINEERS
MAPPED WETLAND 404 PERMIT
NO. 199980194
- 100 YEAR FLOODPLAIN BY FLOOD
INSURANCE RATE MAP, ADAMS COUNTY,
COLORADO, PANEL 319
- STAFF GAUGE
- MONITORING WELL



- * Mining completed during year ended 9/27/16
- Slurry Wall originally approved by DWR 5/25/16 and subsequently 3/22/18 following completion of Orr drainage structure.
- Sloping and grading of reservoir floor completed by 9/27/17.
- Orr drainage structure and spillway as set forth in AM-01 completed by 9/27/17.

Aggregate Industries-WCR, Inc.
Permit No. M-2004-031
Hazeltine Mine
Annual Report Map (NTS)
Year Ended 9/27/2018



www.tetrattech.com
1900 South Sunset Street, Suite 1-E
Longmont, Colorado 80501
Phone: 303-772-5282 Fax: 303-772-7039

MARK	DATE	DESCRIPTION	BY

AGGREGATE INDUSTRIES	EXHIBIT
M-2004-031 AM-01	EXHIBIT
RESERVOIR OUTLET	RESERVOIR OUTLET
AND SPILLWAY	AND SPILLWAY

Project No.:	133-23514-16002
Designed By:	
Drawn By:	
Checked By:	

EXH-1