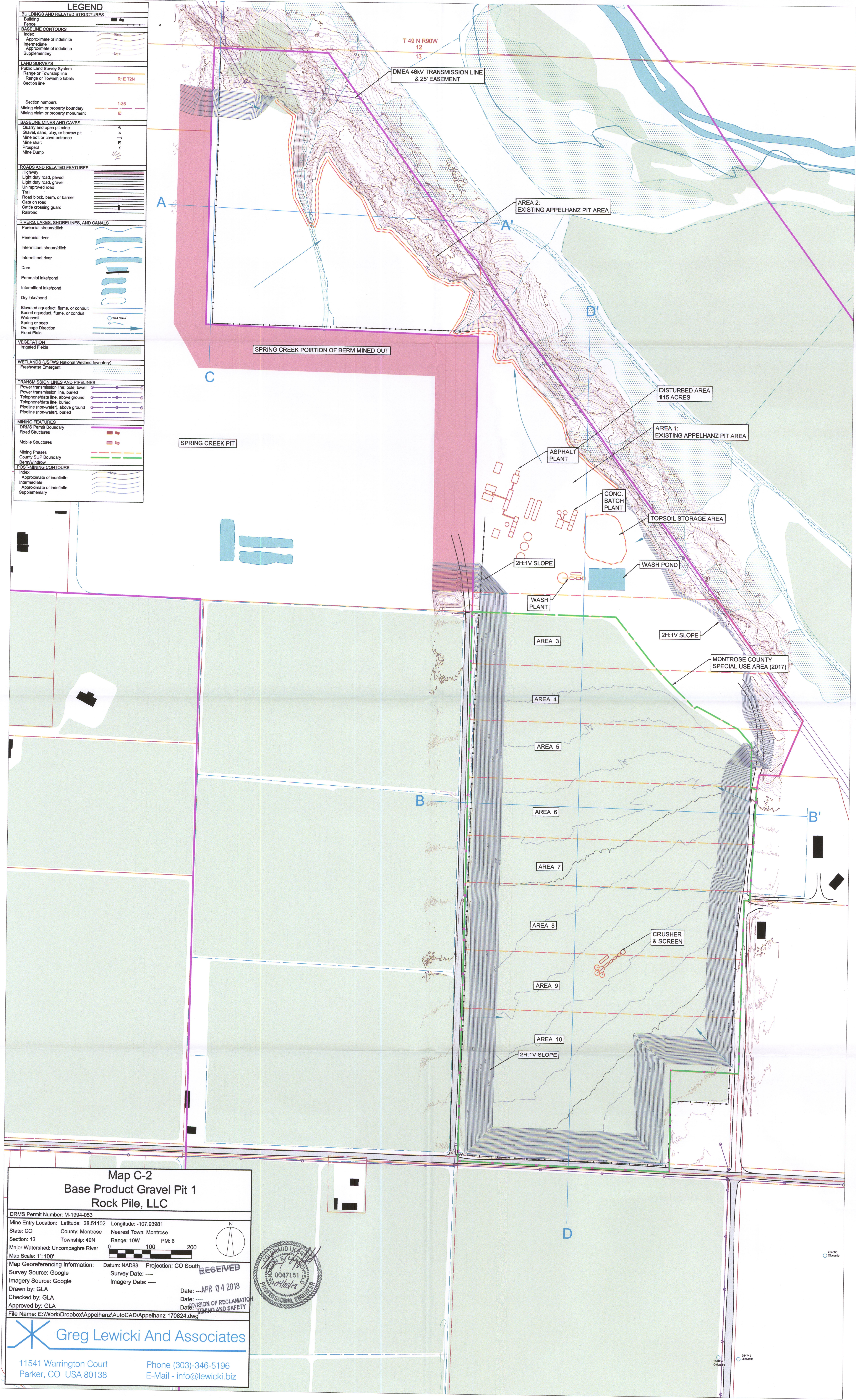


LEGEND	
BUILDINGS AND RELATED STRUCTURES	
Building	■
Fence	—
BASELINE CONTOURS	
Index	—
Approximate of indefinite	—
Intermediate	—
Approximate of indefinite	—
Supplementary	—
LAND SURVEYS	
Public Land Survey System	—
Range or Township line	—
Range or Township labels	R1E T2N
Section line	—
Section numbers	1-36
Mining claim or property boundary	—
Mining claim or property monument	—
BASELINE MINES AND CAVES	
Quarry and open pit mine	✱
Gravel, sand, clay, or borrow pit	✱
Mine adit or cave entrance	—
Mine shaft	—
Prospect	—
Mine Dump	—
ROADS AND RELATED FEATURES	
Highway	—
Light duty road, paved	—
Light duty road, gravel	—
Unimproved road	—
Trail	—
Road block, berm, or barrier	—
Gate on road	—
Cattle crossing guard	—
Railroad	—
RIVERS, LAKES, SHORELINES, AND CANALS	
Perennial stream/ditch	—
Perennial river	—
Intermittent stream/ditch	—
Intermittent river	—
Dam	—
Perennial lake/pond	—
Intermittent lake/pond	—
Dry lake/pond	—
Elevated aqueduct, flume, or conduit	—
Buried aqueduct, flume, or conduit	—
Waterwell	—
Spring or seep	—
Drainage Direction	—
Flood Plain	—
VEGETATION	
Irrigated Fields	—
WETLANDS (USFWS National Wetland Inventory)	
Freshwater Emergent	—
TRANSMISSION LINES AND PIPELINES	
Power transmission line, pole, tower	—
Power transmission line, buried	—
Telephone/data line, above ground	—
Telephone/data line, buried	—
Pipeline (non-water), above ground	—
Pipeline (non-water), buried	—
MINING FEATURES	
DRMS Permit Boundary	—
Fixed Structures	—
Mobile Structures	—
Mining Phases	—
County SUP Boundary	—
Berm/Window	—
POST-MINING CONTOURS	
Index	—
Approximate of indefinite	—
Intermediate	—
Approximate of indefinite	—
Supplementary	—



Map C-2

Base Product Gravel Pit 1

Rock Pile, LLC

DRMS Permit Number: M-1994-053

Mine Entry Location: Latitude: 38.51102 Longitude: -107.93981

State: CO County: Montrose Nearest Town: Montrose

Section: 13 Township: 49N Range: 10W PM: 6

Major Watershed: Uncompaghe River

Map Scale: 1"=100'

Map Georeferencing Information: Datum: NAD83 Projection: CO South

Survey Source: Google Survey Date: ---

Imagery Source: Google Imagery Date: ---

Drawn by: GLA Date: ---APR 04 2018

Checked by: GLA Date: ---

Approved by: GLA Date: ---

File Name: E:\Work\Dropbox\Appelhanz\AutoCAD\Appelhanz 170824.dwg

RECEIVED

0047151

PROFESSIONAL ENGINEER

DATE: 4/4/18

Greg Lewicki And Associates

11541 Warrington Court
Parker, CO USA 80138

Phone (303)-346-5196
E-Mail - info@lewicki.biz