



L.G. EVERIST, INC.

ROCK SOLID SINCE 1876

7321 E. 88TH AVENUE, SUITE 200

HENDERSON, COLORADO 80640

PHONE 303-287-9606 • FAX 303-289-1348

August 3, 2018

Division of Reclamation, Mining and Safety
1313 Sherman Street, Room 215
Denver, CO 80203

RE: DRMS Annual Fee and Report for M-1996-052, Firestone Gravel Resource
Permittee Name: L.G. Everist, Inc.
Anniversary: August 4

Dear Division:

The DRMS Annual Report for Firestone Gravel Resource, DRMS Permit # M-1996-052, has been submitted online. The annual fee has been paid online with a credit card.

Included with this letter are the attachments for the DRMS Annual Report. They include a map which shows the various areas of mining and reclamation noted in the Annual Report. The mining map shows: active mining areas (mining), partially reclaimed areas (mining completed and sloping done), future mining areas (start 2019), processing plant areas and settling pond areas (pond). The affected area remains mostly the same since the last annual report, with some expansion to the east, after we mine out the current area, and finish building the compacted liner slopes. We have continued our weed control and management with mowing and spraying throughout the growing seasons.

Also attached is the Groundwater Monitoring Report with data and a Well map. We are submitting the last year and half of data, starting from January-2017 and going through July-2018. Analysis of the groundwater monitoring data showed that groundwater levels have remained in compliance. The only well that went out of its baseline range was MW03. It was out of range 2 non-sequential months in 2017, and 1 month in 2018, but back in range the following months. These month variances appear to be related to irrigation changes - the Last Chance Ditch is located between the well and our current mining area. The variances have not adversely affect any neighbors, therefore, there are no compliance issues.

If you have questions, feel free to contact me at 303-286-2247, or lmshults@lgeverist.com.

Sincerely,

Lynn Mayer Shults
Regulatory Manager

cc: L.G. Everist files

L.G. Everist, Inc. - Firestone Gravel Resource (M-1996-052) - GROUNDWATER MONITORING REPORT

(Note: Submit new data annually to DRMS for Annual Report.)

ELEVATION DATA <small>Note: Elevations derived from the field Measurements (see worksheet 1) and the Elevation (TOC) of each MW)</small>													
MONITOR WELL NO.	MW-01	MW-02 (gone)	MW-03	MW-04	MW-05	MW-06 (gone)	MW-07	MW-09 (gone)	MW-10	MW-11 (gone)	MW-12	MW-13	MW-14
NORTHING, FT	1,307,909.50	1,309,751.93	1,312,173.59	1,309,691.51	1,308,177.33	1,308,132.31	1,311,086.36	1,308,703.68	1,308,922.41	1,309,498.47	1,309,482.41	1,311,896.53	1,311,760.15
EASTING, FT	3,162,454.93	3,163,486.50	3,165,870.74	3,165,916.29	3,165,934.69	3,162,338.25	3,162,480.59	3,162,729.80	3,163,085.25	3,163,226.77	3,163,363.55	3,164,613.07	3,164,646.53
ELEVATION (TOG), FT	4,810.13	4,806.39	4,799.87	4,802.43	4,836.24			4,805.05	4,804.48	4,805.02	4,804.59	4,797.56	4,797.23
CASING HEIGHT, FT	3.32	3.28	3.03	2.36	3.02			2.67	2.58	2.75	3.08	3.00	3.00
ELEVATION (TOC), FT	4,812.71	4,809.31	4,802.62	4,805.13	4,839.21	4,812.56	4,806.93	4,807.72	4,807.06	4,807.77	4,807.67	4,800.56	4,800.23
	exterior	interior	exterior	exterior	exterior	interior	exterior	interior	interior	interior	interior	exterior	interior

01/05/17	4,806.91	4,784.61	4,772.62	4,791.93	4,809.11	-	4,792.93	-	4,798.86	-	4,793.97	4,783.56	4,768.83
02/09/17	4,806.61	4,784.31	4,772.32	4,790.03	4,807.81	-	4,792.93	-	4,798.66	-	4,793.47	4,783.56	4,768.83
03/08/17	4,806.41	no rdg	4,771.92	4,789.53	4,807.21	-	4,791.53	-	4,798.66	-	4,793.57	4,783.56	4,763.83
04/01/17	no rdg	no rdg	no rdg	no rdg	no rdg	-	no rdg	-	no rdg	-	no rdg	no rdg	no rdg
05/01/17	no rdg	no rdg	no rdg	no rdg	no rdg	-	no rdg	-	no rdg	-	no rdg	no rdg	no rdg
06/02/17	4,806.81	4,789.31	4,776.32	4,789.33	4,807.41	-	4,794.23	-	4,800.56	-	4,797.37	4,783.56	4,771.13
07/05/17	4,807.41	4,790.26	4,786.82	4,790.73	4,808.41	-	4,793.68	-	4,801.66	-	4,797.32	4,783.56	4,772.18
08/07/17	4,807.76	mined out	4,789.52	4,790.83	4,809.82	-	4,794.98	-	4,802.11	-	4,798.72	4,783.61	4,774.33
09/05/17	4,808.31	-	4,790.92	4,791.23	4,810.41	-	4,793.13	-	4,804.16	-	4,798.67	4,783.56	4,775.43
10/04/17	4,807.61	-	4,783.17	4,789.83	4,810.26	-	4,791.53	-	4,800.16	-	4,795.57	4,783.61	4,771.38
11/03/17	4,806.51	-	4,779.37	4,788.78	4,809.41	-	4,791.88	-	4,799.06	-	4,794.47	4,783.51	4,770.03
12/01/17	4,806.16	-	4,777.32	4,788.33	4,808.56	-	4,793.88	-	4,798.46	-	4,793.32	4,783.56	4,769.93
01/08/18	4,805.61	-	4,775.92	4,787.18	4,807.56	-	4,793.78	-	4,798.26	-	4,793.77	4,783.56	4,769.23
02/09/18	4,805.21	-	4,775.22	4,787.08	4,805.71	-	4,794.13	-	4,797.76	-	4,792.37	4,783.56	4,768.73
03/07/18	4,804.76	-	4,775.32	4,786.73	4,806.51	-	4,794.08	-	4,797.51	-	4,791.87	4,783.56	4,768.73
04/04/18	4,804.76	-	4,775.42	4,785.68	4,806.26	-	4,793.73	-	4,797.41	-	4,791.72	4,783.51	4,768.43
05/10/18	4,806.21	-	4,776.12	4,785.43	4,805.96	-	4,794.13	-	4,797.31	-	4,790.52	4,783.51	4,769.13
06/13/16	4,807.51	-	4,785.37	4,786.88	4,806.81	-	4,794.23	-	4,798.11	-	4,792.97	4,783.51	4,771.48
07/03/18	4,808.46	-	4,788.62	4,787.48	4,807.41	-	4,794.58	-	4,802.26	-	4,796.27	4,783.66	4,773.53
Aug													
Sep													
Oct													
Nov													
Dec													

L.G. Everist, Inc. - Firestone Gravel Resource (M-1996-052) - GROUNDWATER MONITORING REPORT

(Note: Submit new data annually to DRMS for Annual Report.)

ELEVATION DATA <small>Note: Elevations derived from the field Measurements (see worksheet 1) and the Elevation (TOC) of each MW</small>													
MONITOR WELL NO.	MW-01	MW-02 (gone)	MW-03	MW-04	MW-05	MW-06 (gone)	MW-07	MW-09 (gone)	MW-10	MW-11 (gone)	MW-12	MW-13	MW-14
NORTHING, FT	1,307,909.50	1,309,751.93	1,312,173.59	1,309,691.51	1,308,177.33	1,308,132.31	1,311,086.36	1,308,703.68	1,308,922.41	1,309,498.47	1,309,482.41	1,311,896.53	1,311,760.15
EASTING, FT	3,162,454.93	3,163,486.50	3,165,870.74	3,165,916.29	3,165,934.69	3,162,338.25	3,162,480.59	3,162,729.80	3,163,085.25	3,163,226.77	3,163,363.55	3,164,613.07	3,164,646.53
ELEVATION (TOG), FT	4,810.13	4,806.39	4,799.87	4,802.43	4,836.24			4,805.05	4,804.48	4,805.02	4,804.59	4,797.56	4,797.23
CASING HEIGHT, FT	3.32	3.28	3.03	2.36	3.02			2.67	2.58	2.75	3.08	3.00	3.00
ELEVATION (TOC), FT	4,812.71	4,809.31	4,802.62	4,805.13	4,839.21	4,812.56	4,806.93	4,807.72	4,807.06	4,807.77	4,807.67	4,800.56	4,800.23
	exterior	interior	exterior	exterior	exterior	interior	exterior	interior	interior	interior	interior	exterior	interior

Groundwater Moniotring - Baseline Period - 2006-2010 <small>NOTE: Baseline monitoring period is 2006-2010, pre-LGE operations</small>													
ANNUAL - Average Elevation	4,805.17	4,800.50	4,795.21	4,799.92	4,808.53	4,804.81	4,796.20	4,802.14	4,801.77	4,801.39	4,801.01	4,795.29	4,795.27
Highest Elevation (data bolded above)	4,808.31	4,804.69	4,798.75	4,801.56	4,810.77	4,807.11	4,798.00	4,803.42	4,804.66	4,804.85	4,804.22	4,797.96	4,795.92
Lowest Elevation (data bolded above)	4,802.29	4,797.81	4,792.37	4,798.13	4,805.94	4,802.11	4,794.49	4,800.27	4,799.72	4,798.57	4,798.74	4,793.99	4,794.28
Max Change (= High - Low)	6.02	6.88	6.38	3.43	4.83	5.00	3.51	3.15	4.94	6.28	5.48	3.97	1.64

Mon-to-Mon Average Elevation (baseline) <small>NOTE: Calculated from Elevation Data for each month in baseline period of 2006-2010.</small>													
January	4,803.55	4,798.90	4,793.67	4,799.35	4,808.38	4,804.41	4,795.66	4,802.12	4,801.58	4,800.62	4,800.67	4,794.86	4,795.13
February	4,803.56	4,798.83	4,793.48	4,799.16	4,807.82	4,803.63	4,795.53	4,801.21	4,800.57	4,799.49	4,799.62	4,794.41	4,794.77
March	4,803.50	4,798.90	4,793.86	4,799.22	4,807.38	4,802.98	4,795.06	4,801.21	4,800.60	4,799.46	4,799.61	4,794.49	4,794.81
April	4,803.30	4,798.69	4,793.68	4,798.99	4,806.96	4,802.88	4,795.02	4,801.07	4,800.53	4,799.46	4,799.61	4,794.55	4,794.86
May	4,804.32	4,800.46	4,794.57	4,799.69	4,807.07	4,804.12	4,795.85	4,802.68	4,802.33	4,801.60	4,801.81	4,795.54	4,795.91
June	4,805.59	4,801.67	4,795.35	4,800.28	4,807.35	4,804.84	4,796.33	4,802.65	4,802.21	4,801.89	4,802.06	4,795.87	4,795.74
July	4,806.58	4,802.53	4,797.88	4,801.05	4,808.29	4,806.45	4,796.97	4,803.42	4,802.86	4,803.44	4,802.54	4,796.46	4,795.56
August	4,807.95	4,803.90	4,798.01	4,801.11	4,809.38	4,807.11	4,797.94	-	-	4,804.56	-	-	-
September	4,807.23	4,802.80	4,797.98	4,800.63	4,809.87	4,806.68	4,797.30	-	4,804.66	4,804.29	4,804.22	4,797.96	-
October	4,806.27	4,800.59	4,795.34	4,800.07	4,809.96	4,805.63	4,796.27	4,802.95	4,802.50	4,801.60	4,801.63	4,795.40	4,795.65
November	4,805.18	4,799.75	4,794.56	4,799.93	4,809.59	4,804.91	4,796.02	4,802.53	4,801.93	4,800.79	4,800.89	4,795.24	4,795.03
December	4,804.64	4,799.43	4,794.36	4,799.79	4,809.11	4,804.45	4,795.82	4,802.23	4,801.65	4,800.57	4,800.69	4,795.19	4,795.31

Mon-to-Mon Average Change +/- (baseline) <small>NOTE: Calculated with ABSOLUTE VALUES during the baseline period of 2006-2010, so the Average Change is for both (+) and (-).</small>													
January-February	0.36	0.26	0.19	0.19	0.56	0.39	0.06	0.20	0.24	0.33	0.30	0.05	0.04
February-March	0.19	0.17	0.49	0.14	0.44	0.09	0.00	0.03	0.02	0.03	0.01	0.03	0.07
March-April	0.26	0.43	0.32	0.27	0.42	0.28	0.05	0.34	0.35	0.42	0.43	0.24	0.19
April-May	0.62	1.19	0.44	0.47	0.17	1.24	0.83	1.61	1.80	2.14	2.20	0.98	1.05
May-June	1.01	1.47	0.42	0.53	0.31	0.72	0.48	0.10	0.44	1.09	1.30	0.34	0.17
June-July	1.77	0.86	2.54	0.48	0.75	1.61	0.64	0.32	0.34	1.55	0.55	0.45	0.17
July-August	1.38	1.51	0.35	0.08	0.78	0.09	0.97	0.00	0.00	1.18	0.00	0.00	0.00
August-September	0.72	1.51	0.21	0.55	0.48	0.08	0.64	0.00	0.00	0.28	0.00	0.00	0.00
September-October	0.81	2.05	2.59	0.86	0.14	1.05	1.03	0.00	1.20	1.49	1.44	1.23	0.00
October-November	1.19	0.98	0.81	0.30	0.42	0.72	0.25	0.41	0.57	0.81	0.75	0.16	0.62
November-December	0.52	0.35	0.31	0.18	0.43	0.46	0.20	0.30	0.28	0.22	0.20	0.12	0.28
December-January	0.51	0.39	0.42	0.38	0.63	0.31	0.23	0.23	0.24	0.22	0.24	0.36	0.34

Mon-to-Mon Average Change +/- with 5-feet Added (baseline) <small>NOTE: 2011 to present MW changes must stay below these Average Changes (+) or (-) from baseline Mon-to-Mon Average Change for compliance, as written in AR-2.</small>													
January-February	5.36	5.26	5.19	5.19	5.56	5.39	5.06	5.20	5.24	5.33	5.30	5.05	5.04
February-March	5.19	5.17	5.49	5.14	5.44	5.09	5.00	5.03	5.02	5.03	5.01	5.03	5.07
March-April	5.26	5.43	5.32	5.27	5.42	5.28	5.05	5.34	5.35	5.42	5.43	5.24	5.19
April-May	5.62	6.19	5.44	5.47	5.17	6.24	5.83	6.61	6.80	7.14	7.20	5.98	6.05
May-June	6.01	6.47	5.42	5.53	5.31	5.72	5.48	5.10	5.44	6.09	6.30	5.34	5.17
June-July	6.77	5.86	7.54	5.48	5.75	6.61	5.64	5.32	5.34	6.55	5.55	5.45	5.17
July-August	6.38	6.51	5.35	5.08	5.78	5.09	5.97	5.00	5.00	6.18	5.00	5.00	5.00
August-September	5.72	6.51	5.21	5.55	5.48	5.08	5.64	5.00	5.00	5.28	5.00	5.00	5.00
September-October	5.81	7.05	7.59	5.86	5.14	6.05	6.03	5.00	6.20	6.49	6.44	6.23	5.00
October-November	6.19	5.98	5.81	5.30	5.42	5.72	5.25	5.41	5.57	5.81	5.75	5.16	5.62
November-December	5.52	5.35	5.31	5.18	5.43	5.46	5.20	5.30	5.28	5.22	5.20	5.12	5.28
December-January	5.51	5.39	5.42	5.38	5.63	5.31	5.23	5.23	5.24	5.22	5.24	5.36	5.34

L.G. Everist, Inc. - Firestone Gravel Resource (M-1996-052) - GROUNDWATER MONITORING REPORT

(Note: Submit new data annually to DRMS for Annual Report.)

ELEVATION DATA <small>Note: Elevations derived from the field Measurements (see worksheet 1) and the Elevation (TOC) of each MW</small>													
MONITOR WELL NO.	MW-01	MW-02 (gone)	MW-03	MW-04	MW-05	MW-06 (gone)	MW-07	MW-09 (gone)	MW-10	MW-11 (gone)	MW-12	MW-13	MW-14
NORTHING, FT	1,307,909.50	1,309,751.93	1,312,173.59	1,309,691.51	1,308,177.33	1,308,132.31	1,311,086.36	1,308,703.68	1,308,922.41	1,309,498.47	1,309,482.41	1,311,896.53	1,311,760.15
EASTING, FT	3,162,454.93	3,163,486.50	3,165,870.74	3,165,916.29	3,165,934.69	3,162,338.25	3,162,480.59	3,162,729.80	3,163,085.25	3,163,226.77	3,163,363.55	3,164,613.07	3,164,646.53
ELEVATION (TOG), FT	4,810.13	4,806.39	4,799.87	4,802.43	4,836.24			4,805.05	4,804.48	4,805.02	4,804.59	4,797.56	4,797.23
CASING HEIGHT, FT	3.32	3.28	3.03	2.36	3.02			2.67	2.58	2.75	3.08	3.00	3.00
ELEVATION (TOC), FT	4,812.71	4,809.31	4,802.62	4,805.13	4,839.21	4,812.56	4,806.93	4,807.72	4,807.06	4,807.77	4,807.67	4,800.56	4,800.23
	exterior	interior	exterior	exterior	exterior	interior	exterior	interior	interior	interior	interior	exterior	interior

Groundwater Monitoring Calculations - for 2011 to Present - to Determine Compliance with Baseline Monitoring

Groundwater Monitoring Plan - notes from Adequacy Response #2 (August-2010)

1. Determining Compliance - From AR-2, "LGE proposes implementing corrective actions when groundwater levels at exterior monitoring holes [see #3] have dropped 5 feet or more from the monthly average drop [see #4] established during monitoring [see #2]."
2. Monitoring Period - baseline monitoring period is 2006-2010, pre-LGE operations
3. Exterior Monitoring Wells - noted in AR-2 as being: MW-01, MW-03, MW-04, MW-05, MW-07, MW-13
4. Mon-to-Mon Average Change +/- (baseline) to incorporate both drops and increases (formerly called "monthly average drop")
 - a. Mon-to-Mon Average Changes +/- (baseline) were calculated by using the each relevant month-to-month change over each of the baseline years.
 - b. 5-feet - added to the Mon-to-Mon Average Changes +/- (baseline) to get the Mon-to-Mon Average Changes +/- with 5-feet added (baseline).
5. Exterior Monitoring Wells - are BOLDED - and are noted in AR-2 as being: MW-01, MW-03, MW-04, MW-05, MW-07, MW-13

for DRMS Annual Report - Aug-2018
data from Jan-Feb-2017 to Jun-Jul-2018

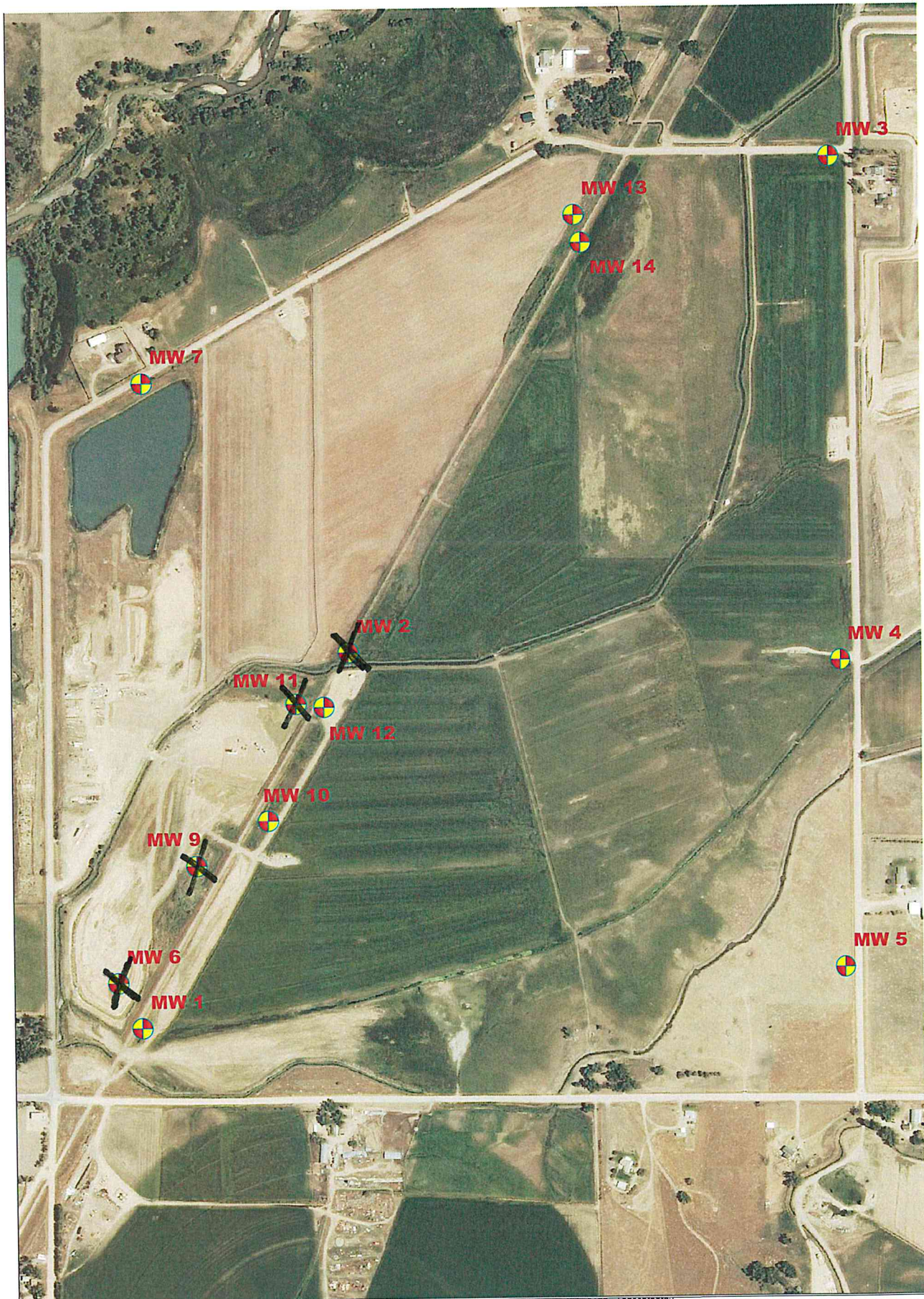
Determining Compliance with Groundwater Monitoring Plan

1. From 2011 to Present, calculate the "Month-to-Month Change" in groundwater levels using monthly data for each well.
2. Month-to-Month Changes that are (=) or (<) the "Mon-to-Mon Average Change +/- with 5-feet Added (baseline)" are in compliance. If the changes are greater, they are out of compliance and in red

2017 - Mon-to-Mon Change <small>(Month-to-Month Changes that are (=) or (<) the "Mon-to-Mon Average Change +/- with 5-feet Added (baseline)" are in compliance. If the changes are greater, they are out of compliance and shown in red / shaded.)</small>													
January-February	0.30	0.30	0.30	1.90	1.30	gone	0.00	gone	0.20	gone	0.50	0.00	0.00
February-March	0.20	no Mar rdg	0.40	0.50	0.60	gone	1.40	gone	0.00	gone	-0.10	0.00	5.00
March-April	no Apr rdg	no Apr rdg	no Apr rdg	no Apr rdg	no Apr rdg	gone	no Apr rdg	gone	no Apr rdg	gone	no Apr rdg	no Apr rdg	no Apr rdg
April-May	no Apr rdg	no Apr rdg	no Apr rdg	no Apr rdg	no Apr rdg	gone	no Apr rdg	gone	no Apr rdg	gone	no Apr rdg	no Apr rdg	no Apr rdg
May-June	no May rdg	no May rdg	no May rdg	no May rdg	no May rdg	gone	no May rdg	gone	no May rdg	gone	no May rdg	no May rdg	no May rdg
June-July	-0.60	-0.95	-10.50	-1.40	-1.00	gone	0.55	gone	-1.10	gone	0.05	0.00	-1.05
July-August	-0.35	mined out	-2.70	-0.10	-1.41	gone	-1.30	gone	-0.45	gone	-1.40	-0.05	-2.15
August-September	-0.55	gone	-1.40	-0.40	-0.59	gone	1.85	gone	-2.05	gone	0.05	0.05	-1.10
September-October	0.70	gone	7.75	1.40	0.15	gone	1.60	gone	4.00	gone	3.10	-0.05	4.05
October-November	1.10	gone	3.80	1.05	0.85	gone	-0.35	gone	1.10	gone	1.10	0.10	1.35
November-December	0.35	gone	2.05	0.45	0.85	gone	-2.00	gone	0.60	gone	1.15	-0.05	0.10
December-January	0.55	gone	1.40	1.15	1.00	gone	0.10	gone	0.20	gone	-0.45	0.00	0.70

2018 - Mon-to-Mon Change <small>(Month-to-Month Changes that are (=) or (<) the "Mon-to-Mon Average Change +/- with 5-feet Added (baseline)" are in compliance. If the changes are greater, they are out of compliance and shown in red / shaded.)</small>													
January-February	0.40	gone	0.70	0.10	1.85	gone	-0.35	gone	0.50	gone	1.40	0.00	0.50
February-March	0.45	gone	-0.10	0.35	-0.80	gone	0.05	gone	0.25	gone	0.50	0.00	0.00
March-April	0.00	gone	-0.10	1.05	0.25	gone	0.35	gone	0.10	gone	0.15	0.05	0.30
April-May	-1.45	gone	-0.70	0.25	0.30	gone	-0.40	gone	0.10	gone	1.20	0.00	-0.70
May-June	-1.30	gone	-9.25	-1.45	-0.85	gone	-0.10	gone	-0.80	gone	-2.45	0.00	-2.35
June-July	-0.95	gone	-3.25	-0.60	-0.60	gone	-0.35	gone	-4.15	gone	-3.30	-0.15	-2.05
July-August													
August-September													
September-October													
October-November													
November-December													
December-January													

DRMS Annual Report 2018 - Groundwater Monitoring Report & Well Map - We are submitting the last year and half of data, starting from January-2017 and going through July-2018. Analysis of the groundwater monitoring data showed that groundwater levels have remained in compliance. The only well that went out of its baseline range was MW03. It was out of range 2 non-sequential months in 2017, and 1 month in 2018, but back in range the following months. These month variances appear to be related to irrigation changes - the Last Chance Ditch is located between the well and our current mining area. The variances have not adversely affect any neighbors, therefore, there are no compliance issues.



		DRAWN BY: DCF		REV. #	BY	DATE	DESCRIPTION
		DATE: 7-23-2014		A	-	-	-
		SCALE: nts		B	-	-	-
		CAD FILE:		L.G. Everist, Inc. Aggregate Producers 7321 E. 88th Ave, Suite 200 Henderson, CO, 80640 (303) 286-2245			
				Monitoring Well Layout			
				Firestone Sand and Gravel Resource			