

6/12/2018

State.co.us Executive Branch Mail - proof of Publication; Jeff Carter.pdf



STATE OF
COLORADO

Cunningham - DNR, Michael <michaela.cunningham@state.co.us>

proof of Publication; Jeff Carter.pdf

1 message

Jeff Carter <jeff.carter@mountainpropertybuilders.com>

Fri, Jun 8, 2018 at 2:45 PM

To: "Cunningham - DNR, Michael" <michaela.cunningham@state.co.us>



Reclamation Permit Jeff Carter.pdf

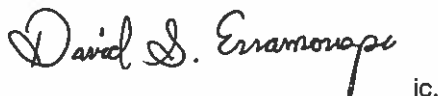
119K

**PROOF OF PUBLICATION
CLEAR CREEK COURANT
CLEAR CREEK COUNTY
STATE OF COLORADO**

I, Kristin Witt, do solemnly swear that I am the Publisher of the Clear Creek Courant the same is a weekly newspaper printed and published in the County of Clear Creek, State of Colorado, and has a general circulation therein; that said newspaper has been published continuously and uninterrupted in said county of Clear Creek for a period of more than fifty-two consecutive weeks prior to the first publication of the annexed legal notice or advertisement; that said newspaper has been admitted to the United States mails as second-class matter under the provisions of the act of March 3, 1879, or any amendments thereof, and that said newspaper is a weekly newspaper duly qualified for publishing legal notices and advertisements within the meaning of the laws of the State of Colorado. That the annexed legal notice or advertisement was published in the regular and entire issue of every number of said weekly newspaper for the period of **ONE consecutive insertion(s)** and that the first publication of said notice was in the issue of newspaper, dated **16th day of May, 2018** the last on the **16th day of May, 2018**



Publisher, Subscribed and sworn before me,
this 16th day of May, 2018



ic.

**DAVID S. ERRAMOUSPE
NOTARY PUBLIC
STATE OF COLORADO
NOTARY ID #20154027149
MY COMMISSION EXPIRES 7/10/2019**

Public Notice

Jeff Carter
15954 Jackson Creek
Parkway B281
Monument, CO 80132
719-237-5914

has filed an application for a Hard Rock/Metal Mining Limited Impact (110) Reclamation Permit with the Colorado Mined Land Reclamation Board under provisions of the Colorado Mined Land Reclamation Act. The proposed mine is known as the Lombard 4 and 5, and is located at or near Section 9, Township 35, Range 74W, 6th Prime Meridan.

The proposed date of commencement is June 1, 2018, and the proposed date of completion is June 1, 2019. The proposed future use of the land is Reclaimed.

Additional information and tentative decision date may be obtained from the Division of Reclamation, Mining, and Safety, 1313 Sherman Street, Room 215, Denver, Colorado 80203, 303-866-3567, or at the Clear Creek County Clerk and Recorder's office; 405 Argentine Street, or the above-named applicant. A complete copy of the application is available at the above-named County Clerk and Recorder's office and at the Division's office.

Comments concerning the application and exhibits must be in writing and must be received by the Division of Reclamation, Mining, and Safety by 4:00 p.m. on May 30, 2018.

Please note that under the provisions of C.R.S. 34-32-101 et seq. Comments related to noise, truck traffic, hours of operation, visual impacts, effects on property values and other social or economic concerns are issues not subject to this Office's jurisdiction. These subjects, and similar ones, are typically addressed by your local governments, rather than the Division of Reclamation, Mining, and Safety or the Mined Land Reclamation Board.

Published
Clear Creek Courant
May 16, 2018

STATE OF
COLORADO

Cunningham - DNR, Michael <michaela.cunningham@state.co.us>

DRMS File # M-2018-012 Adequacy #2 Review Comments

1 message

Jeff Carter <jeff.carter@mountainpropertybuilders.com>

Fri, Jun 8, 2018 at 3:37 PM

To: "Cunningham - DNR, Michael" <michaela.cunningham@state.co.us>

Please send the comments from Clear Creek County,. I will address their concerns in a separate email.

Please review my comments below and let me know if I need to change anything.

Have a good Weekend,

Jeff

- 1) Proof of Publication submitted
- 2) Not Done, How would I get this info?
- 3) Not Done.
- 4) Affirmative Statement; I, Jeff Carter as operator will follow the Conditions of Approval specified in the comment letter dated April 11, 2018
- 5) Both Past and Present mining land use will be "Forestry"
- 6) Underground sampling will involve in removing 15-20 5 gallon buckets from each Audit.
- 7) Each Audit will require approximately 50 cubic yards of excavated material to close each audit at the end of the season
- 8) Each Audit will require approximately 50 cubic yards of excavated material to close each audit.
- 9) 10% slope on Lower Audit, 18% slope on Upper Audit
- 10) From the junction of Cumberland Gulch Rd and Fall River Rd the distance up cumberland gulch Rd, is 1.8 Miles
- 11) Existing waste rock dumps will not be disturbed. Existing topsoil will be stockpiled prior to storing and newly excavated material
- 12) An area 40'x40' or 1600 sq ft at each audit will require topsoil replacement and revegetation.

Not sure if you need this document.

Jeff Carter
15954 Jackson Ck Pkwy B281
Monument CO, 80132
719-237-5914
jeff.carter@mountainpropertybuilders.com

Clear Creek County.pdf



United States
Department of
Agriculture

Forest
Service

Clear Creek Ranger District

101 Highway 103
P.O. Box 3307
Idaho Springs, CO 80452
303-567-3000
Fax: 303-567-3021

File Code: 2810
Date: January 23, 2018

Jeff Carter
SSG Mining, Inc.
15954 Jackson Ck Pkwy B281
Monument CO 80132

Dear Mr. Carter:

This letter is in response to the Plan of Operation (Plan) you submitted to this office for work on the Lombard #4 and Lombard #5 mining claims located in the Alice-Yankee Hill Mining District, T. 3 S., R. 74 W., Section 1, 6th P.M. Please review the required mitigation for your operation which is included in this package and titled "Plan of Operation, Jeff Carter – SSG Mining, **Appendix B – Design Criteria**". If you have questions please let us know; otherwise, please sign and date the indicated line in Section VIII. "Operating Plan Acceptance" and return the document to Leslie McFadden, Canyon Lakes Lands and Minerals Staff, at the above address. The bond for your operation will be collected and held by Colorado State Division of Reclamation, Mining and Safety. Once that bond is secured we will approve your Plan and you may begin operation.

Per 30 U.S.C. 22; 43 CFR 3832, a qualified mine locator must be a citizen of the United States or a corporation organized under the laws of the State. Because SSG Mining is not registered with the State and we are not allowed to issue to trusts, all approvals and documentation will be issued to Jeff Carter. This allows for consistency with the State who will be holding the reclamation bond on behalf of both agencies. Please be advised that Clear Creek County may have additional requirements.

Approval for your Plan will cover the 2018 and 2019 operating seasons. If you make changes to your operation for those seasons, or if you wish to continue operating beyond those seasons, you must submit a new Plan. If you have any questions please contact Leslie at 970-295-6735 or lmcfadden@fs.fed.us.

Sincerely,

SCOTT E. HAAS
District Ranger

enc: Plan of Operations for Mining Activities on National Forest System Lands
cc: Michael Cunningham, Colorado DRMS; Cyndie Ruschmyer, Clear Creek County



**PLAN OF OPERATIONS FOR MINING ACTIVITIES
ON NATIONAL FOREST SYSTEM LANDS**

USE OF THIS FORM IS OPTIONAL 1st TIME USERS SHOULD DIRECT QUESTIONS REGARDING THIS FORM OR REGULATIONS (36 CFR 228A) TO THE FOREST SERVICE DISTRICT OFFICE NEAREST YOUR AREA OF INTEREST.

Submitted by:

Signature

Title

Date
(mm/dd/yy)

Signature

Title

Date
(mm/dd/yy)

Plan Received by:

Signature

Title

Date
(mm/dd/yy)**I. GENERAL INFORMATION**A. Name of Mine/Project: Jeff Carter - SSG-MiningB. Type of Operation: See Attached

(lode, placer, mill, exploration, development, production, other)

C. Is this a (☐new/☐continuing) operation? (check one).If continuing a previous operation, this plan (☐replaces/☐modifies/☐supplements) a previous plan of operations. (check one)

D. Proposed start-up date (mm/dd/yy) of operation: _____

E. Expected total duration of this operation: _____

F. If seasonal, expected date (mm/dd/yy) of annual reclamation/stabilization close out: _____

G. Expected date (mm/dd/yy) for completion of all required reclamation: _____

II. PRINCIPALS

A. Name, address and phone number of operator: _____

B. Name, address, and phone number of authorized field representative (if other than the operator).
Attach authorization to act on behalf of operator. _____

C. Name, address and phone number of owners of the claims (if different than the operator): _____

(If more space is needed to fill out a block of information, use additional sheets and attach form)

- D. Name, address and phone number of any other lessees, assigns, agents, etc., and briefly describe their involvement with the operation, if applicable:

III. PROPERTY OR AREA

(Name of claim, if applicable, and the legal land description where the operation will be located.)

MC#	Name	Section	Township	Range

IV. DESCRIPTION OF THE OPERATION

- A. Access. Show on a map (USGS quadrangle map or a National Forest map, for example) the claim boundaries, if applicable, and all access needs such as roads and trails, on and off the claim. Specify which Forest Service roads will be used, where maintenance or reconstruction is proposed, and where new construction is necessary. For new construction, include construction specifications such as widths, grades, etc., location and size of culverts, describe maintenance plans, and the type and size of vehicles and equipment that will use the access routes.

- B. Map, Sketch or Drawing. Show location and layout of the area of operation. Identify any streams, creeks or springs if known. Show the size and kind of all surface disturbances such as trenches, pits, settling ponds, stream channels and run-off diversions, waste dumps, drill pads, timber disposal or clearance, etc. Include sizes, capacities, acreage, amounts, locations, materials involved, etc.

(If more space is needed to fill out a block of information, use additional sheets and attach form)

-
- C. Project Description.** Describe all aspects of the operation including mining, milling, and exploration methods, materials, equipment, workforce, construction and operation schedule, power requirements, how clearing will be accomplished, topsoil stockpile, waste rock placement, tailings disposal, proposed number of drillholes and depth, depth of proposed suction dredging, and how gravels will be replaced, etc. Calculate production rates of ore. Include justification and calculations for settling pond capacities, and the size of runoff diversion channels.
-
- D. Equipment and Vehicles.** Describe that which is proposed for use in your operation (Examples: drill, dozer, wash plant, mill, etc.). Include: sizes, capacity, frequency of use, etc.
-
- E. Structures.** Include information about fixed or portable structures or facilities planned for the operation. Show locations on the map. Include such things as living quarters, storage sheds, mill buildings, thickener tanks, fuel storage, powder magazines, pipelines, water diversions, trailers, sanitation facilities including sewage disposal, etc. Include engineering design and geotechnical information for project facilities, justification and calculations for sizing of tanks, pipelines and water diversions, etc.
-

V. ENVIRONMENTAL PROTECTION MEASURES (SEE 36 CFR 228.8)

- A. Air Quality.** Describe measures proposed to minimize impacts on air quality such as obtaining a burning permit for slash disposal or dust abatement on roads.
-

(If more space is needed to fill out a block of information, use additional sheets and attach form)

B. Water Quality. *State how applicable state and federal water quality standards will be met. Describe measures or management practices to be used to minimize water quality impacts and meet applicable standards.*

- 1. State whether water is to be used in the operation, and describe the quantity, source, methods and design of diversions, storage, use, disposal, and treatment facilities. Include assumptions for sizing water conveyance or storage facilities.*
- 2. Describe methods to control erosion and surface water runoff from all disturbed areas, including waste and tailings dumps.*
- 3. Describe proposed surface water and groundwater quality monitoring, if required, to demonstrate compliance with federal or state water quality standards.*
- 4. Describe the measures to be used to minimize potential water quality impacts during seasonal closures, or for a temporary cessation of operations.*
- 5. If land application is proposed for waste water disposal, the location and operation of the land application system must be described. Also describe how vegetation, soil, and surface and groundwater quality will be protected if land application is used.*

C. Solid Wastes. *Describe the quantity and the physical and chemical characteristics of solid waste produced by the operation. Describe how the wastes will be disposed of including location and design of facilities, or treated so as to minimize adverse impacts.*

D. Scenic Values. *Describe protection of scenic values such as screening, slash disposal, or timely reclamation.*

(If more space is needed to fill out a block of information, use additional sheets and attach form)

E. Fish and Wildlife. Describe measures to maintain and protect fisheries and wildlife, and their habitat (includes threatened, endangered, and sensitive species) affected by the operations.

F. Cultural Resources. Describe measures for protecting known historic and archeological values, or new sites in the project area.

G. Hazardous Substances.

1. Identify the type and volume of all hazardous materials and toxic substances which will be used or generated in the operations including cyanide, solvents, petroleum products, mill, process and laboratory reagents.

2. For each material or substance, describe the methods, volume, and frequency of transport (include type of containers and vehicles), procedures for use of materials or substances, methods, volume, and containers for disposal of materials and substances, security (fencing), identification (signing/labeling), or other special operations requirements necessary to conduct the proposed operations.

3. Describe the measures to be taken for release of a reportable quantity of a hazardous material or the release of a toxic substance. This includes plans for spill prevention, containment, notification, and cleanup.

(If more space is needed to fill out a block of information, use additional sheets and attach form)

- H. **Reclamation.** Describe the annual and final reclamation standards based on the anticipated schedule for construction, operations, and project closure. Include such items as the removal of structures and facilities including bridges and culverts, a revegetation plan, permanent containment of mine tailings, waste, or sludges which pose a threat of a release into the environment, closing ponds and eliminating standing water, a final surface shaping plan, and post operations monitoring and maintenance plans.

VI. FOREST SERVICE EVALUATION OF PLAN OF OPERATIONS

- A. **Required changes/modifications/special mitigation for plan of operations:**
See attached - Jeff Carter - Plan of Operation Appendix B - Design Criteria

- B. **Bond.** Reclamation of all disturbances connected with this plan of operations is covered by Reclamation Performance Bond No. _____, dated (mm/dd/yy) _____, signed by _____ (Principal) and _____ (Surety), for the penal sum of _____. This Reclamation Performance Bond is a guarantee of faithful performance with the terms and conditions listed below, and with the reclamation requirements agreed upon in the plan of operations. This Reclamation Performance Bond also extends to and includes any unauthorized activities conducted in connection with this operation.

The bond amount for this Reclamation Performance Bond was based on a bond calculation worksheet. The bond amount may be adjusted during the term of this proposed plan of operations in response to changes in the operations or to changes in the economy. Both the Reclamation Performance Bond and the bond calculation worksheet are attached to and made part of this plan of operations. Acceptable bond securities (subject to change) include:

1. Negotiable Treasury bills and notes which are unconditionally guaranteed as to both principle and interest in an amount equal at their par value to the penal sum of the bond; or
 2. Certified or cashier's check, bank draft, Post Office money order, cash, assigned certificate of deposit, assigned savings account, blanket bond, or an irrevocable letter of credit equal to the penal sum of the bond.
-

(If more space is needed to fill out a block of information, use additional sheets and attach form)

January 01, 2017

Bureau of Land Management
2850 Youngfield St
Lakewood CO, 80215

PLAN OF OPERATIONS

SSG Mining Un-Patented Claim(s), Alice Yankee Hill DISTRICT, Clear Creek County, Colorado

Colorado Claim Holder:

SSG Mining, Inc./Jeff Carter
15954 Jackson Ck Flwy B2B1
Monument CO 80132
719-237-5914
lc751_1999@yahoo.com

Type of Mining Operation

Collecting samples, opening audits with mechanized equipment from historic mine dumps and audits to evaluate the grade of contained metals. Removal and reprocessing of material with economic values.

Location of Activities

<u>1/4</u>	<u>Section</u>	<u>Township</u>	<u>Range</u>
NE	1	35	74W
No. 1:	39° 49' 16.57"N -105° 36' 54.34" W	NE Corner	
No. 2:	39° 48' 12.11"N -105° 36' 49.70" W	SE Corner	
No. 3:	39° 49' 04.85"N -105° 36' 08.00" W	SW Corner	
No. 4:	39° 49' 09.48"N -105° 36' 10.37" W	NW Corner	

Landowner

US Forest Service

Contact: Leslie McFadden 970-295-6851

Description of the Operation

SSG Mining proposes to evaluate the grade of mine dumps associated with the mining claim complex. Research indicates that significant grades of Gold & Silver, are possible in these dumps due to the geologic character of the disseminated mineralization, that made ore delivered to the mill difficult to hand-sort or high-grade.

Access to the site is along the Cumberland Gulch Road Or Mine Road In the Town of Alice. These are the existing roads that access the upper and lower parts of the project area. No new roads will be created. No trees should need to be removed.

Sample collection will be accomplished by digging pits or short trenches into the surface of the mine dumps using a Kubota kx91 compact-excavator or similar machine. The track-mounted kx91 has a weight of 8,000 pounds, a 18 inch-wide bucket, a depth-reach of 10.5 feet and a track-width of 5' 1". The trenches will be kept as short as possible yet long enough to allow a sample to be extracted from a maximum depth of -10 feet. The trenches will not be physically accessed; instead, the bucket will be used to scrape the side of the trench to dislodge material, and then bring that material up to the surface where it will be sampled. Each sample will represent an approximate 5 foot vertical interval of the dump. High-grade material or abrupt changes in composition of material could dictate shorter or longer sample intervals at the site.

First-pass sampling on dumps will be conducted on systematic grid-basis with approximate 10-foot spacing between sample lines and sample sites. This specific unit-size to the grid may be modified slightly for a best-fit to the size and geometry for the mining claim. In order to fully access the mine dumps it will be necessary to cut tracks perpendicular to the fall line of the dumps. Material from the track will be placed on the upper bank of the track.

It is anticipated that only parts of the dump will have grades that will sustain economic reprocessing. Additional sampling may be necessary surrounding those samples that show economic grades in first-pass samples to determine the extent of the mineralization in non-homogenous areas. Rapid turn-around of analyses at the ore's present will allow immediate follow-up and help to define the distribution of metals in the mine and the mine dump.

Testing will begin as soon as possible following the acceptance of the Plan of Operations. A geologist will be on-site to supervise the work throughout the testing period. It is anticipated that the program could take approximately ten days to complete.

SSG Mining will follow best management practices including the use of properly maintained equipment, weed-free equipment and experienced personnel, and will employ safeguards such as having spill-kits available in the case of fuel or hydraulic leaks.

Respectfully Submitted

Jeff Carter,
President SSG Mining, Inc.
719-237-5914

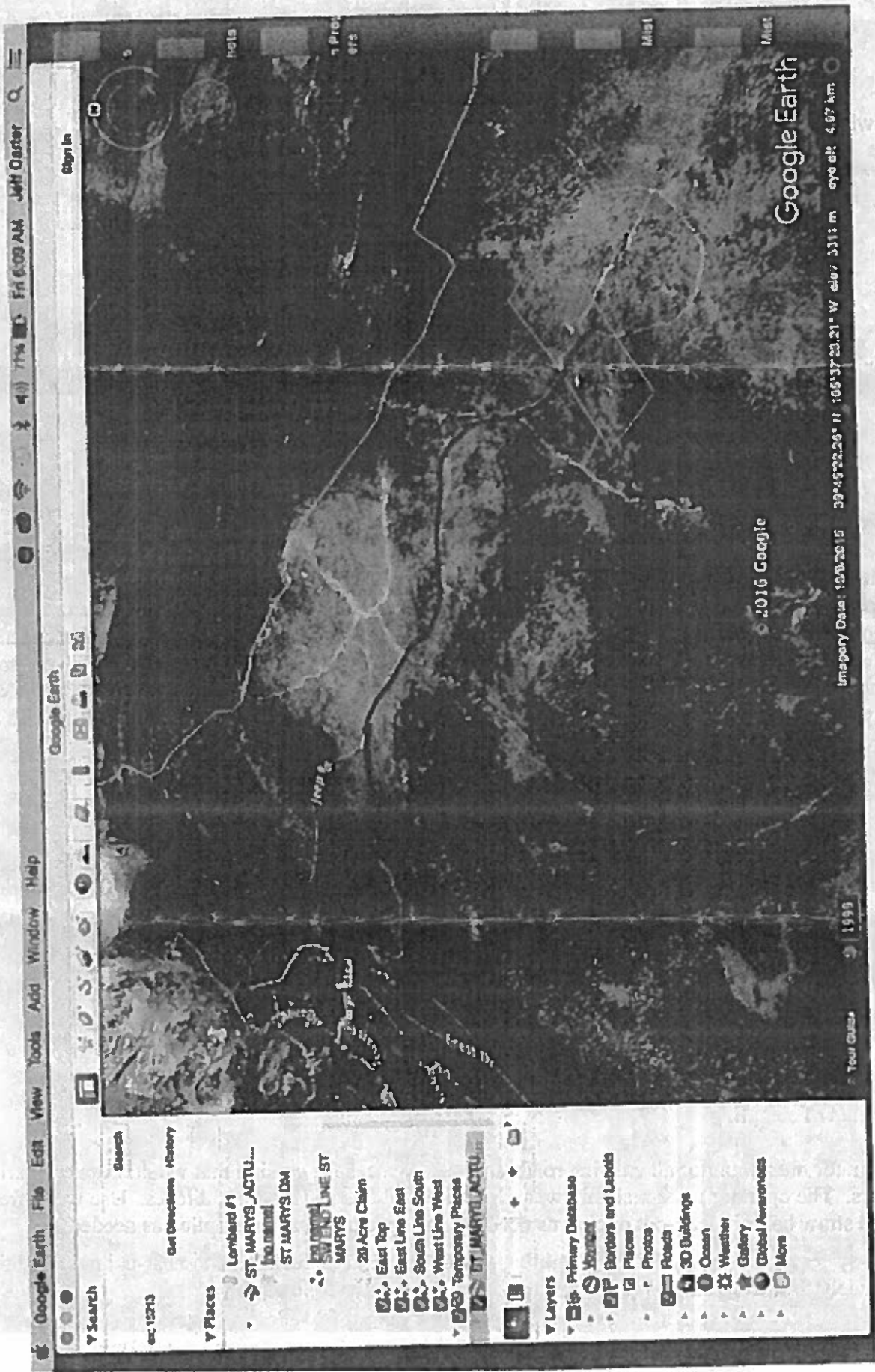


Sign In



Google E

© 2016 Google



Plan of Operation
Jeff Carter – SSG Mining
Appendix B - Design Criteria

The following design criteria have been established for this specific mining operation.

Physical and Biological Elements of the Environment

Water Quality and Soils:

Waste and Hazardous Material:

- Storage and use of hazardous materials or explosives is not authorized.
- The operator is required to remove garbage from NFS land and dispose of this garbage in accordance with state and local regulations.
- A small, portable chemical or compost toilet must be on site during operations. All human waste must be transported off NFS land and disposed of in accordance with state and local regulations.
- No chemicals or additives may be used in water used for washing minerals on site. Any fuels, antifreeze, solvents or potential hazardous materials must be properly stored to contain any leaks, and will be placed at least 100 feet away any perennial, intermittent, and ephemeral drainages. Limit refueling to designated areas.
- The operator will use spill pads when pouring fuel or other petroleum products into tanks or other containers, to contain any spillage before it reaches the soil or water.
- In the event of a petroleum (gas, diesel, oil, etc.) spill or other hazardous material spill onto the soil of the claim, immediately contact the National Response Center at 1-800-424-8802 and the Clear Creek County Sheriff. If hazardous substances are spilled on a federal, state or county roadway contact the Colorado State Patrol. All hazardous material spills will be disposed of according to Colorado State Hazmat disposal guidelines.
- Dumping of gray water or washing must be over 100 feet away from any stream channel.

Road-Use, Construction and Reclamation:

- The operator is allowed to use National Forest System Roads (NESR) 271.1 and 175.1 from County Road 275 (Fall River Road) to access the mining claim. Vehicle use may include a small track-mounted excavator.
- Limit track hoe trails and other soil disturbances to the minimum amount possible.
- All trenching and excavations must be secured to ensure public safety, and backfilled upon completion of sampling.
- The operator must monitor all existing roads and disturbances for erosion that would impact riparian corridors. The operator must maintain water bars, rolling dips and lead-out ditches. Use weed-free certified straw bales in lead-out ditches as needed. Silt fencing must be installed as needed.
- All non-system roads utilized through mining operations must be reclaimed to near-natural conditions immediately following the completion of mining operations as follows:
 - Roads and related structures must be obliterated to provide adequate drainage

- All culverts must be removed and a natural grade reestablished.
- Obliterated roads, drainages and modified must be recontoured and revegetated.

Dig Site Construction and Reclamation:

- Avoid operations during or directly after periods of heavy rain or when soils are wet. If rutting caused by equipment or vehicles is observed, stop mechanical operations immediately.
- The operator would be required to reclaim all dig sites by filling with excavated material, recontouring, replacing topsoil and seeding if deemed necessary by the Forest Botanist.
- All mining spoil will be separated into two distinct piles: 1) topsoil and 2) general overburden. Topsoil will be considered the uppermost four inches of mineral soil and any organic matter (e.g. litter or duff) above the mineral surface. The topsoil must be piled and clearly labeled. On all slopes greater than 10 percent, topsoil and overburden piles must have silt fencing effectively installed down slope of the piles. Mining spoils must be placed immediately upslope of dig sites such that any eroded material would be captured by the excavation.

Vegetation and Noxious Weeds:

If deemed necessary, reclamation seed mixes will be specified by the Forest Botanist.

The operator will seed all recontoured dig sites, associated topsoil piles and reclaimed roads at the end of every season.

Seeding will be done in the fall, optimally before the first snowfall.

Machinery brought onto National Forest System lands must be power-washed off-site so to be free of any organic materials that may introduce weeds to the site.

Heritage:

If a previously unknown site is discovered by either the operator or the Forest Service, mining operations that could impact the new site would stop immediately until the site is evaluated by the Forest Service and any needed mitigation measures are developed.

If new proposed dig sites are proposed that are outside the project area, additional Heritage Resource surveys, documentation and OAH/SHPO concurrence would be required.

Fire:

All internal combustion engines including but not limited to generators, vehicles, mechanized mining equipment and power tools, must be fitted with an approved spark arresting device or muffler in good working order.

The operator must have and maintain hand tools for fire suppression in the event of a wildland fire.

Reclamation:

The reclamation bond will be collected and held by Colorado Division of Reclamation, Mining, and Safety. The bond will be released by requirements by both agencies are satisfied.

Continual reclamation will continue throughout the mining season. The claimant will take measures to prevent or control onsite and off-site damage to NFS land resources including (36 CFR 228.8 g):

- Control of erosion and landslides from temporary access roads and dig sites
- Control of water runoff
- Isolation, removal or control of toxic materials

Annual (end-of-season) reclamation will include:

- Removal of all equipment and trash from mining claim
- Seed topsoil piles with native seed and/or monitor spoil piles for erosion problems.
- Recontouring and replacement of topsoil in disturbed sites where mining operations are complete
- Revegetation of all recontoured areas
- Annual reclamation will be completed by October 31 of each year.

Final reclamation will include:

- Removal of all equipment and trash from mining claim
 - Recontouring and replacement of topsoil at all disturbed sites (including dig sites and all temporary access roads)
 - Revegetation of all disturbed areas with native vegetation. Before reclamation bond is released, vegetation must be established 80% or better compared to the surrounding undisturbed areas.
- Reclamation of the site will be measured by the Land and Minerals Staff, Clear Creek Ranger District.

Use and Occupancy of the Forest

Mining Access and Occupancy:

Occupancy and use restrictions for the Arpaho and Roosevelt National Forests and Pawnee National Grassland apply to these mining operations. The policy prohibits camping on NFS land more than 28 days within a continuous 60 day period on the entire Roosevelt National Forest, where not otherwise restricted, and occupying any campsite for more than 14 days during this 60 day period within 3 miles of a previous campsite. The proposed 60 day camping per operation per year will be permitted only within the claim boundaries when directly incident to mining operations.

The operator is required to request permission from private property owners prior to utilizing a private access road, constructing any temporary access roads or mining on private property.

The operator may request a Right-of-Way permit to access closed system roads in order to access his mining claim.

The operator must use necessary precautions to not damage any utility lines or associated facilities en route to dig sites in the project area.

Public Access and Safety:

The operator will be required to fence individual dig sites with orange snow fence or other Forest Service approved fencing material to promote public safety.

Gates will be required at the entrances to all temporary access roads. The Forest Service may require signing with Forest Service approved language such as "No Public Vehicle or Mineral Entry."

VII. TERMS AND CONDITIONS

- A. If a bond is required, it must be furnished before approval of the plan of operations.
- B. Information provided with this plan marked confidential will be treated in accordance with the agency's laws, rules, and regulations.
- C. Approval of this plan does not constitute certification of ownership to any person named herein and/or recognition of the validity of any mining claim named herein.
- D. Approval of this plan does not relieve me of my responsibility to comply with other applicable state or federal laws, rules, or regulations.
- E. If previously undiscovered cultural resources (historic or prehistoric objects, artifacts, or sites) are exposed as a result of operations, those operations will not proceed until notification is received from the Authorized Officer that provisions for mitigating unforeseen impacts as required by 36 CFR 228.4(e) and 36 CFR 800 have been complied with.
- F. This plan of operations has been approved for a period of 2 Seasons or until (mm/dd/yy) 12/31/19. A new or revised plan must be submitted in accordance with 36 CFR part 228, subpart A, if operations are to be continued after that time period.

VIII. OPERATING PLAN ACCEPTANCE

☒ ☐ We have reviewed and agreed to comply with all conditions in this plan of operations including the required changes, modifications, special mitigation, and reclamation requirements.

☒ ☐ We understand that the bond will not be released until the Authorized Officer in charge gives written approval.

[Signature]
Signature of ☒ Operator (or ☐ Authorized Representative)

2/4/18
(Date)
(mm/dd/yy)

IX. OPERATING PLAN APPROVAL

(Name)

(Title)

Signature of (Authorized Officer)

(Date)
(mm/dd/yy)

Burden and Non-Discrimination Statement

According to the Paperwork Reduction Act of 1996, an agency may not conduct or sponsor, and a person is not required to respond to a collection of information unless it displays a valid OMB control number. The valid OMB control number for this information collection is 0596-0022. The time required to complete this information collection is estimated to average 12 hours per response, including the time for reviewing instructions, searching existing data sources, gathering and maintaining the data needed, and completing and reviewing the collection of information.

The U.S. Department of Agriculture (USDA) prohibits discrimination in all its programs and activities on the basis of race, color, national origin, age, disability, and where applicable, sex, marital status, familial status, parental status, religion, sexual orientation, genetic information, political beliefs, reprisal, or because all or part of an individual's income is derived from any public assistance. (Not all prohibited bases apply to all programs.) Persons with disabilities who require alternative means for communication of program information (Braille, large print, audiotape, etc.) should contact USDA's TARGET Center at 202-720-2600 (voice and TDD).

To file a complaint of discrimination, write USDA, Director, Office of Civil Rights, 1400 Independence Avenue, SW, Washington, DC 20250-9410 or call toll free (866) 632-9992 (voice). TDD users can contact USDA through local relay or the Federal relay at (800) 877-8339 (TDD) or (866) 377-8642 (relay voice). USDA is an equal opportunity provider and employer.

(If more space is needed to fill out a block of information, use additional sheets and attach form)



STATE OF
COLORADO

Cunningham - DNR, Michael <michaela.cunningham@state.co.us>

Clear Creek County Responses

1 message

Jeff Carter <jeff.carter@mountainpropertybuilders.com>

Tue, Jun 12, 2018 at 7:43 AM

To: "Cunningham - DNR, Michael" <michaela.cunningham@state.co.us>

- 1) I know they are aware of this application. I am not aware if they have connected or approved this application.
- 2) Access will be vis Cumberland Gulch Rd
- 3) The "solid waste disposal" designation was marked in error.
- 4) Existing tailing piles will not be disturbed
- 5) Reclamation will consist of removing topsoil before excavation begins. After audits are backfilled topsoil will be spread over areas disturbed by excavation.
- 6) The reclaimed area for upper audit slope where reclamation will occur is approximately 18%. The reclaimed area for lower audit slope where reclamation will occur is approximately 10%. Zone 5 seed mix will be used after topsoil is replaced.

Please let me know if you have any additional questions

Jeff Carter

15954 Jackson Ck Pkwy B281

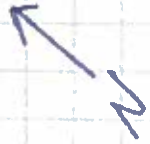
Monument CO, 80132

719-237-5914

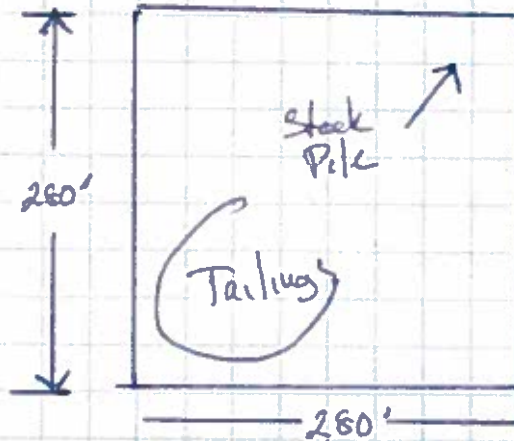
jeff.carter@mountainpropertybuilders.com

Operator: Jeff Carter Reclamation Plan Map

Site Name: Lombard?



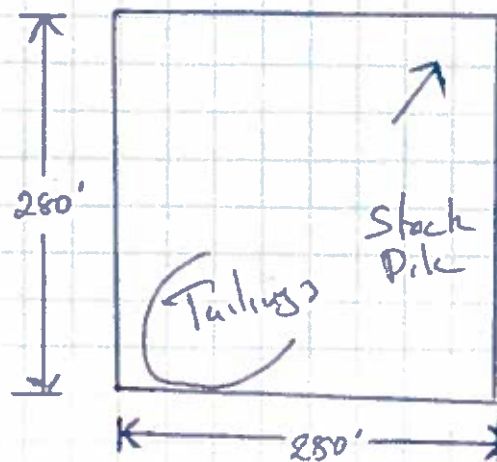
Upper Audit



1st Area
Reclamation
Boundary
1.8 Acres

Existing Road

Lower Audit



2nd Area
Reclamation Boundary
1.8 Acres

1 inch = 140 Feet

Jeff Carter

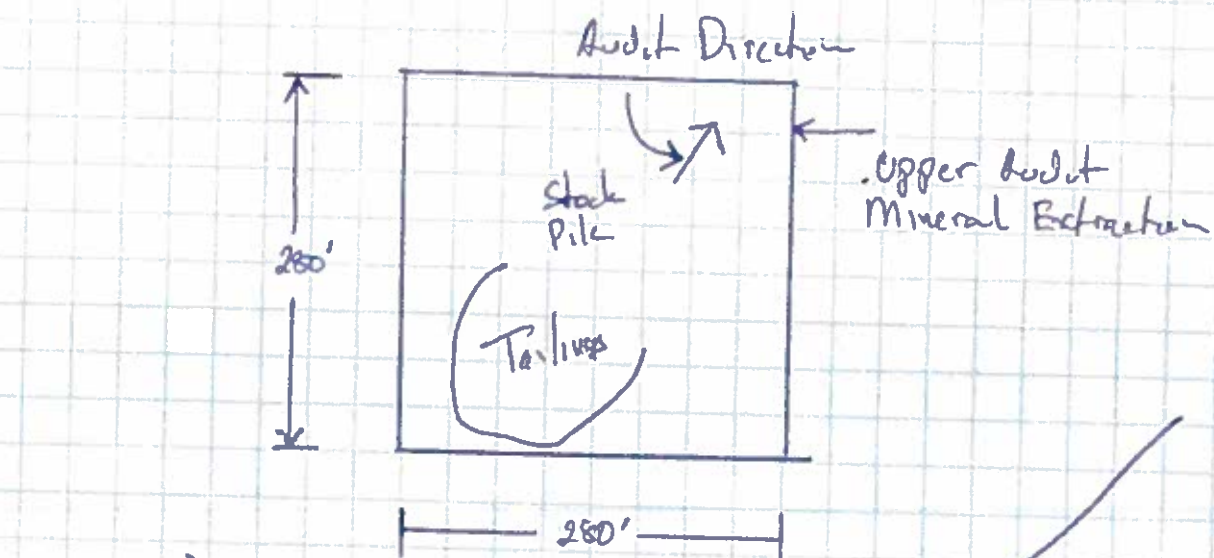
Signature

6/18/18

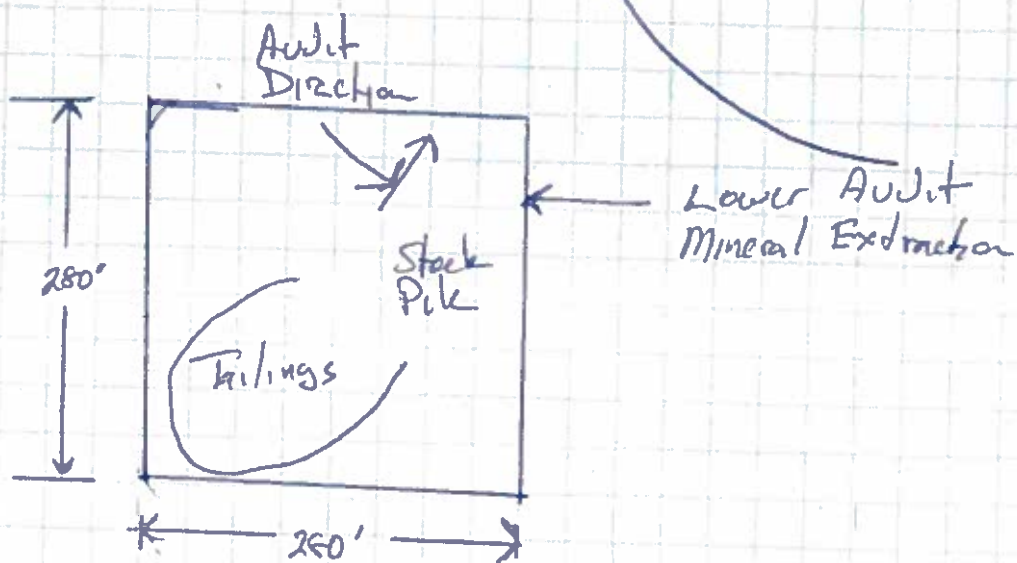
Date

Operator Name: Jeff Carter Mine Plan Map

Site Name: Lombard 415



Existing Road



1 inch = 140 Feet

Jeff Carter
Signature

6/18/18
Date