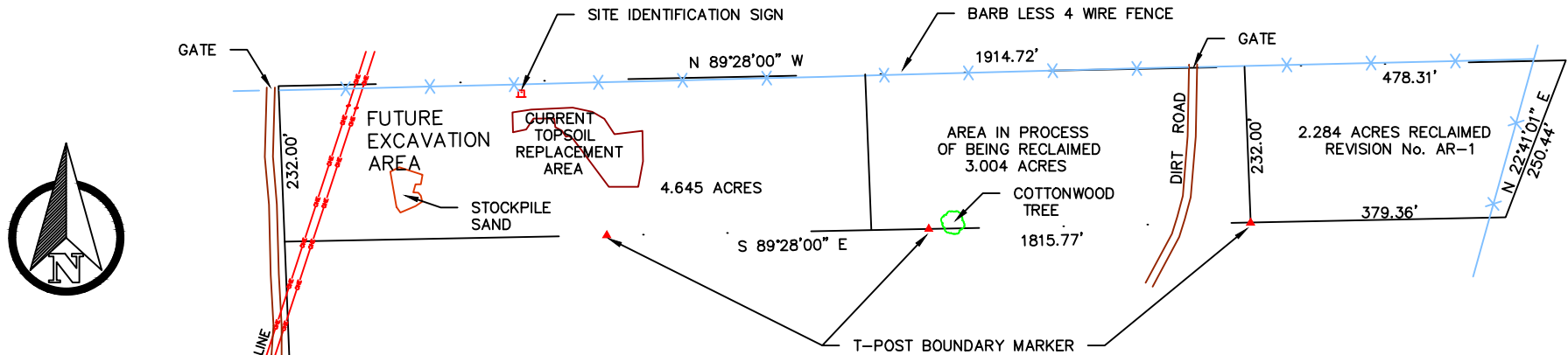


## NORTH GATEWAY PARK



## LAMAR INDUSTRIAL PARK #1

### LAMAR INDUSTRIAL PARK GRAVEL PIT PRIOR YEAR NOTIFICATION

Disturbances to existing land are shown on this map for the year 2017 – 2018.

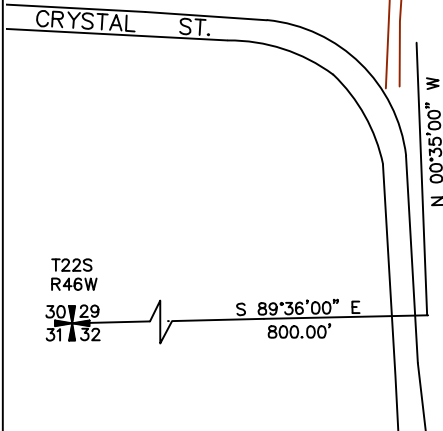
Reclamation on the East 2.284 Acres accomplished to date at the site. Released from reclamation responsibility, May 2001. Land in the process of being reclaimed is designated on the map. This area will not be utilized for future mining operations.

New disturbances are noted on this map during the upcoming year and include the west area of the pit adjacent to existing stockpile of sand and gravel from the pit, as shown. Topsoil has been replaced on approx. 4 Ac. of land in process of reclamation to 12" depth.

Active operations began November 1st, 2012. Date of last excavation, processing or hauling activity occurred Dec. 2017. New disturbances for the upcoming year to be approx. 0.5 Ac. on the west end of the pit.

Approximate 250 tons of material were utilized from excavated and stockpiled material in the active operations referenced mining months.

H:\DRAWING FILES\Gravel Pits\LIP Permit M-1987-078.dwg



**CITY of LAMAR LAND SURVEYING  
and ENGINEERING DEPARTMENT**

Project: **LIP GRAVEL PIT  
PERMIT #M1987-078**

Date: 6/14/2018  
Drawn By: msm

Sheet # 1  
Scale: 1" = 250'