

L.G. EVERIST, INC.



CORPORATE OFFICE
300 S. PHILLIPS AVE. • SUITE 200
P.O. BOX 5829
SIOUX FALLS, SD 57117-5829
PHONE 605-334-5000
FAX 605-334-3656

MOUNTAIN DIVISION
7321 E. 88TH AVENUE • SUITE 200
HENDERSON, COLORADO 80640
303-287-9606
FAX 303-289-1348

June 1, 2018

Division of Reclamation, Mining, and Safety
Department of Natural Resources
1313 Sherman Street, Room 215
Denver, CO 80203

RE: 112c Reclamation Permit - Attachments for Annual Fee and Annual Report

To Whom It May Concern:

PERMITTEE:	L. G. Everist, Inc.
PERMIT NO.:	M-1999-120
OPERATION NAME:	Fort Lupton Sand and Gravel Mine
ANNIVERSARY DATE:	June 1 (annually)
ANNUAL FEE:	\$791.00

The DRMS Annual Report for Fort Lupton Sand and gravel (M1999120) has been submitted online. The annual fee has been paid online with a corporate credit card.

Here are the attachments for the DRMS Annual Report. They include a map which shows the various areas of mining and reclamation noted in the Annual Report, and a Groundwater Monitoring Report with data and a map.

The mining map shows: released areas (X), active mining areas (mining), recently completed mining areas (mining completed), future mining areas (start 2019), seeded areas (green), and settling pond areas (pond).

If you have any questions, feel free to contact me at 303-286-2247 or lmshults@lgeverist.com.

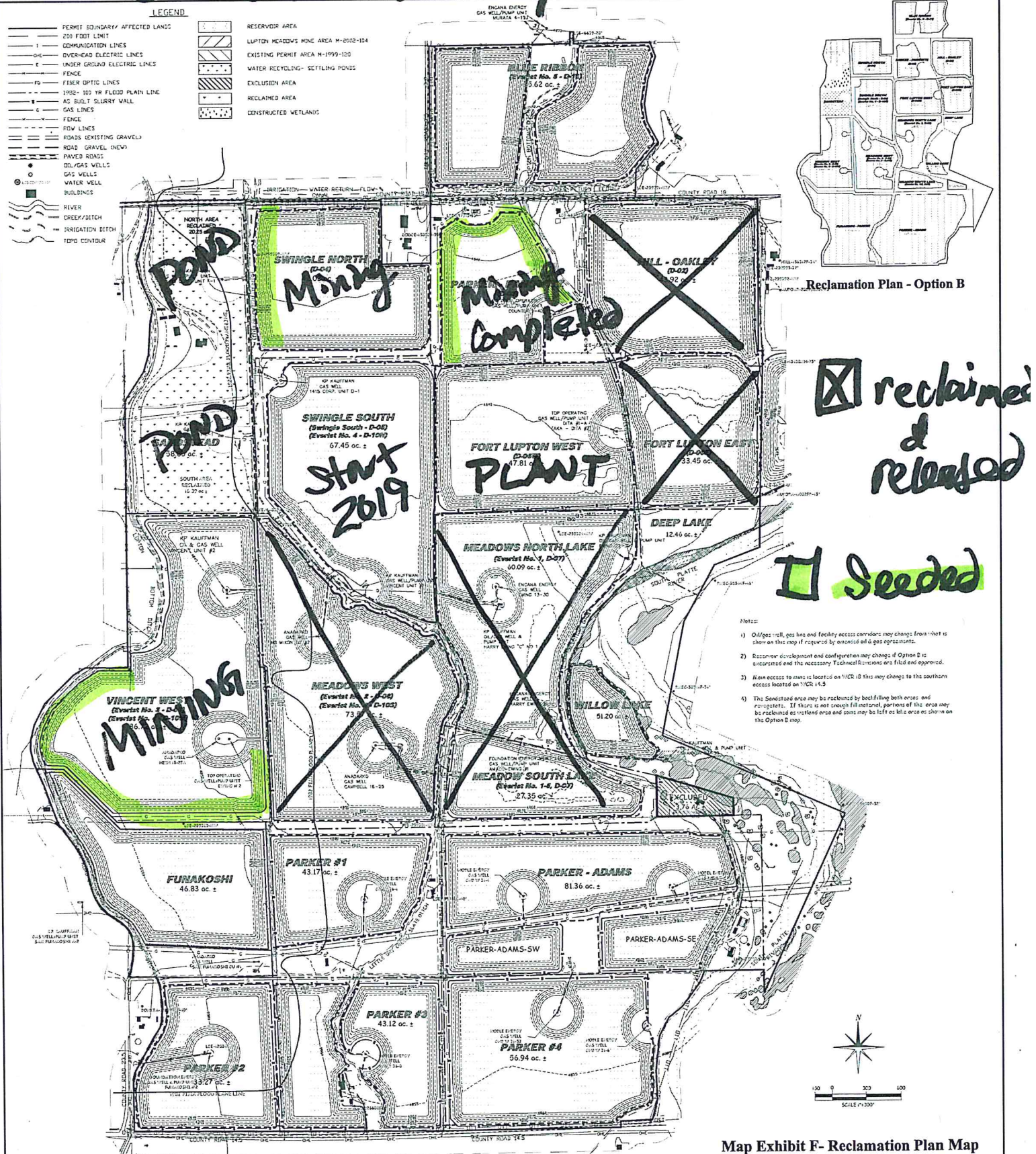
Sincerely,

Lynn Mayer Shults
Regulatory Manager

cc: Richard Schneider

DRMS Annual Report - 2018

July 18, 2012 - 15:10:18



ENVIRONMENT, INC.
2000 W. 10TH AVE. SUITE 200
DENVER, CO 80202
303.442.1111
Environment, Inc@state.net

AMENDMENT
FOR
FORT LUPTON SAND AND GRAVEL
PERMIT # M-1999-120

REVISIONS	DATE
ORIGINAL PERMIT	12/1999
AMENDMENT - ADDED 752.71 ACRES	07/2012

L.G. Everist, Inc.

7321 East 88th Avenue | Henderson, Colorado 80640
phone: (303) 287-4656 | fax: (303) 289-1348

INITIALS	DATE	SHEET
ENV/S/O	7/8/2012	4 of 4

DRMS ANNUAL REPORT - GROUNDWATER MONITORING REPORT

SITE: L.G. Everist, Inc. - Fort Lupton Sand and Gravel, M-1999-120

DATE: May 31, 2018

Fort Lupton monitoring well data from January-2017 through May-2018 is attached. Prior data has been submitted in prior reports and permit amendments. A map of the active monitoring well locations is also attached. (MW = monitoring well). All wells that are listed in the attached data and shown on the map are active wells. (Monitoring wells that have been mined through and no longer exist are not on the map or listed in the data.)

The majority of the monitoring wells have maintained groundwater levels within their baseline ranges established in L.G. Everist's (LGE) final adequacy response for the DRMS permit amendment in October-2012. This includes wells in areas where we are not yet mining, and also wells within and outside the perimeters of slurry walls - showing that the water is flowing around the slurry walls in natural patterns.

A few monitoring wells at Fort Lupton have fluctuated in and out of their baseline ranges. L.G. Everist has investigated the data and compared monitoring well results with their locations and nearby activities. Most wells that have fallen outside of baseline ranges are internal to LGE operations, and are not affecting anyone, therefore no mitigation is necessary. Three external wells that tend to be outside their baseline ranges are MW-08, MW-09 and MW-10. They seem to be affected by the operations in a neighboring unlined mine (see details below). For all three wells, LGE is not the cause of the groundwater decrease, so no mitigation is required by LGE..

Following is a listing of all active monitoring wells - with notes on whether the well is internal or external to the site, whether it is in or out of baseline ranges, any other notable changes, and explanations of the raw data and any contributing external (or internal) factors. Investigation and mitigation are also noted. There have been no adverse effects on neighbors with any of changes indicated in these wells. We continue to monitor all our active wells monthly.

ACTIVE WELLS

MW-02 - internal to site - south third of site - within baseline ranges

MW-04 - internal to site - near processing plant - within baseline ranges for majority of months, a few months were out by a minimal amount, then back within baseline ranges

MW-06 - internal to site - located west side of the Swingle-South slurry wall, with Sandstead cell located to the west. In and out of baseline range.

Note: MW-06 has fluctuated with the dewatering the south end of the Sandstead cell, and is slightly outside baseline ranges, but the well is internal to LGE, any fluctuating water levels would only affect the operator, so no mitigation is necessary.

MW-08 - edge of site - located on the south side of CR18, outside of the Swingle-North slurry wall, and directly across from a neighboring unlined mining operation. Not in baseline range.

Note: The neighboring mine's dewatering efforts are having an effect on the groundwater levels because their mine is unlined. MW-08 was within baseline ranges for the first few years - prior to the other mining operation commencing. Since the other mine started, the well has generally been below the low baseline number. There are no residential neighbors nearby to be affected.

MW-09 - external, N of site - quite far north of any LGE operations. Not in baseline range.

Note: The well is located directly across CR25 from the adjoining mine's (see MW-08) main entrance. Their dewatering efforts seem to be causing the local groundwater levels to decrease. The same conditions exist as noted under MW-08. There are no residential neighbors nearby to be affected.

DRMS ANNUAL REPORT - GROUNDWATER MONITORING REPORT

SITE: L.G. Everist, Inc. - Fort Lupton Sand and Gravel, M-1999-120

DATE: May 31, 2018

MW-10 - external, N of site - even farther north of LGE operations, north of MW-09, and adjacent to an irrigation ditch. In and out of baseline ranges - currently in.

Note: This well is so far from LGE operations, it really makes no sense to be on LGE's well list. It is closer to another mine (see MW8 and MW9), than to any LGE permitted areas. There are no residential neighbors nearby to be affected.

MW-14 - internal to site - this well is located in the southeast corner of the Parker-Panowitz cell, within the slurry wall - the groundwater levels are below baseline ranges, which indicates that the approved slurry wall is working.

Note: The Parker-Panowitz cell is nearly complete - it is mined out and reclamation sloping is complete around three sides of the area. Changes in groundwater levels around this well only affect LGE, therefore no mitigation is necessary.

MW-20 and MW-25 - edge of site - these two wells are located at the southwest and northeast corners of the Sandstead phase. MW-20 has stayed within baseline ranges. MW-25 was slightly out of baseline ranges for a few months, but has come back within baseline ranges.

Note: The unlined mining operation first mentioned in MW-08 is across the road to the north of this well. No residential neighbors have been affected.

MW-21, MW-22, MW-24 - internal to site - these three wells are located around the south and east sides of the Sandstead phase. They are within baseline ranges.

MW-26, MW-27, MW-28, MW-29, MW-30, MW-31, MW-32, MW-33, MW-34 - some are internal to site, some are along edges, all in the south third of the site where mining has not yet begun. All are within baseline ranges.

MW-37 - edge of site - on the west side of Vincent West cell. It is within baseline ranges.

MW-45 - edge of site - on the north side of Parker-Panowitz. It is within baseline ranges.

MW-52 - internal to site - located with the Swingle-South slurry wall. It is within baseline ranges.

RECENTLY MINED OUT - NOW INACTIVE

MW-39, MW-40, MW-41 - internal to site - these were within the Swingle North cell, and have recently been mined out. Prior to being mined out, they were within baseline ranges.

MW-47 - internal to site - this was in the south point of the Swingle-South cell, but has recently been mined out. It was within baseline ranges prior to being mined out.

MW-53 - internal to site - was located in Swingle-South cell. It has recently been mined out. It was within baseline ranges prior to being mined out.

NEW WELLS

MW-54 and MW-55 - new wells located in the Sandstead cell. They are shown on the map, but there is no data in the spreadsheet because they have only been installed in the past few months - which is not enough time for a baseline to be established yet.

FORT LUPTON S&G MONITOR WELL NO.	MW-02	MW-04	MW-06	MW-08	MW-09	MW-10	MW-14	MW-20
NORTHING, FT	1280952.82	1283290.42	1283728.10	1285900.46	1287365.87	1288925.73	1284654.27	1283584.51
EASTING, FT	3187993.46	3187818.84	3185934.31	3186592.51	3187426.10	3188991.48	3188830.71	3185761.31
ELEVATION (TOG), FT	4880.09	4,875.66	4,873.53	4,869.20	4,866.27	4,863.10	4,874.69	4878.63
CASING HEIGHT, FT	3.05	2.36	3.02	3.18	3.20	3.08	2.88	3.24
ELEVATION (TOC), FT	4,883.14	4,878.02	4,876.55	4,872.38	4,869.47	4,866.18	4,877.57	4881.87
HIGH (max of first 2 yrs + 1)	4,880.69	4,875.43	4,874.39	4,866.30	4,863.12	4,859.88	4,867.40	4,876.48
LOW (min of first 2 yrs - 1)	4,875.22	4,868.67	4,867.68	4,857.83	4,855.35	4,854.00	4,861.77	4,859.47
01/05/17	4,878.84	4,869.42	4,861.95	4,839.98	4,838.57	4,853.98	4,855.07	4,868.47
02/09/17	4,878.74	4,868.92	4,861.35	4,838.38	4,837.97	4,853.68	4,854.47	4,869.37
03/08/17	4,878.74	4,868.82	4,863.05	4,838.38	4,836.57	4,853.48	4,854.17	4,869.57
April	-	-	-	-	-	-	obstructed	-
May	-	-	-	-	-	-	-	-
06/01/17	4,879.54	-	4,867.15	4,839.68	4,838.57	4,855.78	-	4,871.07
07/05/17	4,879.64	4,870.12	4,866.60	4,839.53	4,838.67	4,855.93	-	4,871.77
08/04/17	ditch too high	4,870.87	4,871.55	4,838.53	4,837.17	4,855.78	-	4,872.22
09/05/17	-	4,870.02	can't access	4,839.83	4,837.37	4,855.38	-	4,872.07
10/04/17	-	4,869.57	-	4,838.48	4,836.42	-	-	4,871.67
11/03/17	-	4,869.22	-	4,838.53	4,835.77	4,854.58	-	4,871.47
12/08/17	-	4,868.67	-	4,838.53	4,835.22	4,854.08	-	4,870.57
01/10/18	ditch too high	4,868.22	can't access	4,838.48	-	-	obstructed	4,869.77
02/09/18	-	4,868.22	-	4,838.48	4,834.37	4,853.28	-	4,869.62
03/07/18	4,878.69	4,868.07	-	4,838.48	4,834.12	4,853.18	-	4,869.37
04/04/18	4,878.79	4,868.17	-	4,838.48	4,834.37	4,853.48	-	4,869.17
05/07/18	-	4,869.07	-	4,839.08	4,835.17	4,854.78	-	4,870.42
Jun								
Jul								
Aug								
Sep								
Oct								
Nov								
Dec								

FORT LUPTON S&G MONITOR WELL NO.	MW-21	MW-22	MW-24	MW-25	MW-26	MW-27	MW-28	MW-29
NORTHING, FT	1283603.67	1283651.45	1285220.96	1286191.14	1278473.10	1278442.03	1278427.71	1279705.24
EASTING, FT	3186195.02	3186672.94	3186629.91	3186587.77	3190083.81	3188252.28	3185716.95	3185920.94
ELEVATION (TOG), FT	4876.93	4877.39	4870.81	4868.97	4887.10	4885.69	4895.11	4891.42
CASING HEIGHT, FT	3.31	3.10	3.08	3.68	2.94	2.95	2.60	3.30
ELEVATION (TOC), FT	4880.24	4880.49	4873.89	4872.65	4890.04	4888.64	4897.71	4894.72

HIGH (max of first 2 yrs + 1)	4,875.84	4,875.53	4,870.89	4,866.45	4,891.04	4,889.64	4,898.71	4,895.72
LOW (min of first 2 yrs - 1)	4,854.54	4,856.59	4,856.19	4,853.95	4,878.03	4,880.84	4,884.39	4,880.89
01/05/17	4,869.04	4,864.09	4,857.39	4,855.15	4,879.44	4,881.54	4,885.41	4,883.32
02/09/17	4,869.24	4,863.79	4,859.49	4,854.85	4,879.24	4,881.64	4,885.21	4,883.12
03/08/17	4,869.44	4,864.99	4,857.49	4,854.05	4,879.24	4,881.54	4,884.91	4,882.82
April	-	-	-	-	-	-	-	-
May	-	-	-	-	-	-	-	-
06/01/17	4,870.54	4,868.69	4,857.99	4,856.25	4,880.04	4,883.04	4,886.71	4,884.52
07/05/17	4,842.04	4,867.79	4,857.64	4,854.60	4,879.94	4,883.09	4,887.01	4,885.52
08/04/17	4,870.29	4,871.29	4,857.94	4,856.15	4,880.29	4,883.69	4,887.71	4,886.02
09/05/17	4,869.79	4,867.39	4,857.19	4,852.20	4,879.29	4,882.44	4,886.86	4,885.42
10/04/17	4,869.74	4,866.74	4,855.64	4,851.20	4,879.54	4,882.54	4,886.71	4,884.97
11/03/17	4,869.44	4,864.09	4,854.34	4,849.95	4,879.19	4,882.04	4,886.26	4,884.62
12/08/17	4,869.44	4,865.09	4,855.39	4,850.75	4,879.14	4,881.69	4,885.36	4,883.52
01/10/18	4,868.74	4,865.64	4,855.29	4,849.40	4,879.04	4,881.49	4,884.86	4,883.02
02/09/18	4,868.74	4,864.64	4,854.64	4,849.55	4,878.94	4,881.34	4,884.61	4,882.82
03/07/18	4,868.69	4,864.19	4,854.44	4,850.75	4,878.79	4,881.29	4,884.46	4,882.72
04/04/18	4,868.39	4,863.99	4,857.49	4,851.55	4,878.74	4,881.34	4,884.46	4,882.67
05/07/18	4,869.24	4,865.99	4,860.24	4,856.35	4,879.49	4,882.34	4,885.66	4,883.72
Jun								
Jul								
Aug								
Sep								
Oct								
Nov								
Dec								

FORT LUPTON S&G MONITOR WELL NO.	MW-30	MW-31	MW-32	MW-33	MW-34	MW-37	MW-39 (now inactive)	MW-40 (now inactive)
NORTHING, FT	1279612.81	1279702.73	1281049.34	1281023.27	1280976.36	1282451.42	1285400.15	1285720.87
EASTING, FT	3188258.35	3190495.90	3190074.13	3186869.81	3185167.73	3185753.31	3187284.44	3187298.36
ELEVATION (TOG), FT	4883.91	4884.66	4882.40	4883.59	4887.04	4883.69	4870.14	4869.48
CASING HEIGHT, FT	2.83	3.53	3.07	2.70	3.72	3.49	1.88	3.85
ELEVATION (TOC), FT	4886.74	4888.19	4885.47	4886.29	4890.76	4887.18	4872.02	4873.33

HIGH (max of first 2 yrs + 1)	4,887.74	4,889.19	4,886.47	4,887.29	4,891.76	4,888.18	4,873.02	4,874.33
LOW (min of first 2 yrs - 1)	4,877.04	4,875.56	4,873.15	4,877.98	4,878.96	4,864.78	4,848.84	4,849.02

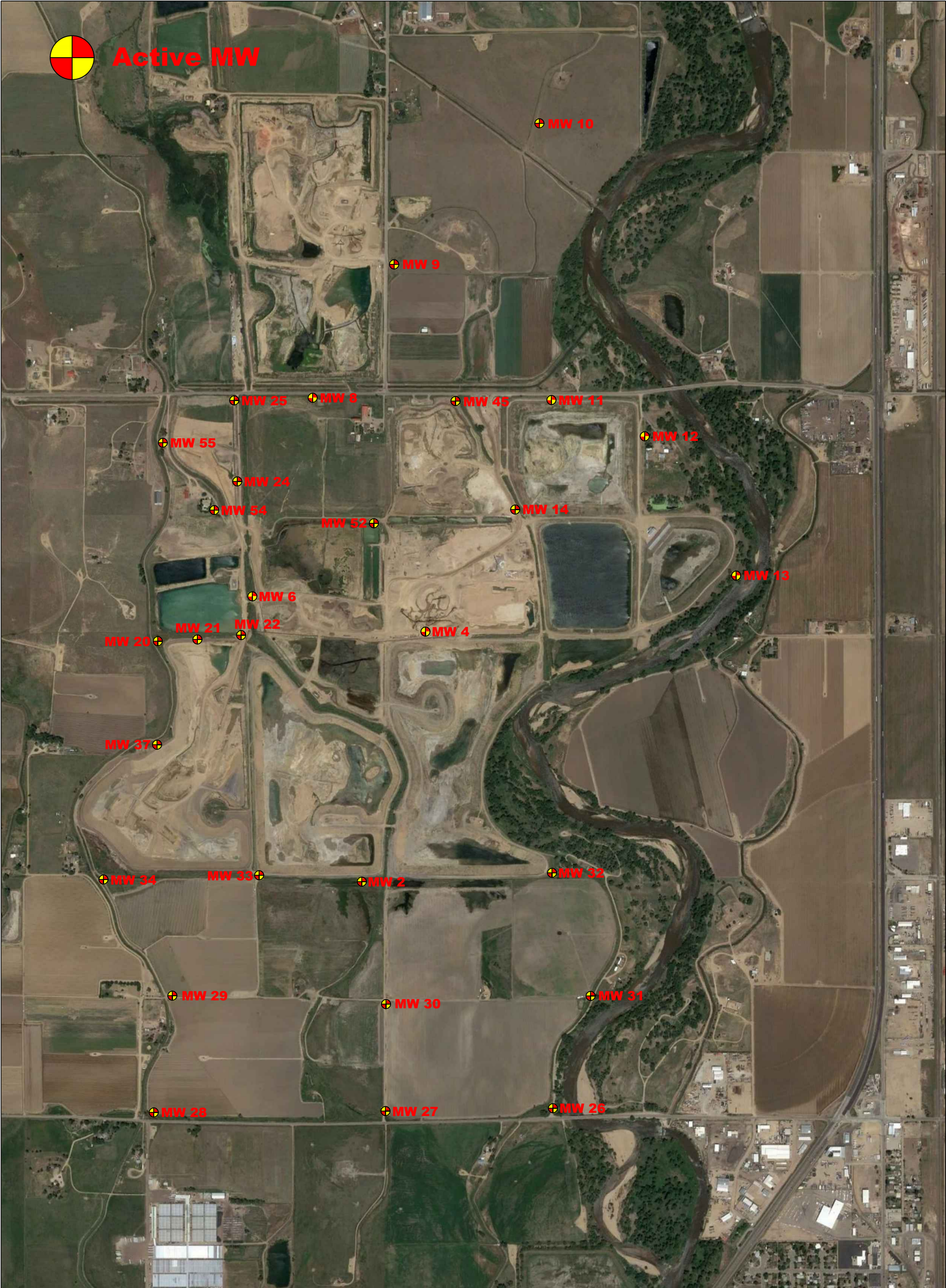
01/05/17	4,879.64	4,877.19	4,868.87	4,881.19	4,883.96	4,866.98	4,863.02	4,862.83
02/09/17	4,879.54	4,877.19	4,874.87	4,880.99	4,883.76	4,869.78	4,862.92	4,862.73
03/08/17	4,879.44	4,877.09	4,874.77	4,880.69	4,879.46	4,870.08	4,862.82	4,862.73
April	-	-	-	-	-	-	-	-
May	-	-	-	-	-	-	-	-
06/01/17	4,880.79	4,877.99	4,875.87	4,882.09	4,884.66	4,872.08	4,862.32	4,862.68
07/05/17	4,881.54	4,878.04	4,875.97	4,882.49	4,886.26	4,873.53	4,862.77	4,862.58
08/04/17	4,882.09	4,878.44	4,876.47	4,882.99	4,886.56	4,874.33	4,862.67	4,862.53
09/05/17	4,880.54	-	4,875.17	4,882.39	4,886.31	4,874.43	4,862.62	4,862.43
10/04/17	-	-	4,875.22	4,882.49	4,885.86	4,873.58	4,862.57	4,862.38
11/03/17	4,879.99	-	4,874.87	4,881.94	4,885.56	4,872.98	4,862.57	4,862.43
12/08/17	4,879.64	-	4,874.82	4,881.34	4,884.41	4,871.63	4,860.72	4,860.98
01/10/18	4,879.44	4,876.94	4,874.47	4,880.99	4,884.06	4,870.68	4,858.37	4,858.43
02/09/18	4,879.34	4,876.84	4,874.47	4,880.89	4,883.36	4,870.38	4,857.22	4,857.23
03/07/18	4,879.34	4,876.79	4,874.52	4,880.79	4,883.26	4,870.03	mined out	mined out
04/04/18	4,879.44	4,876.74	4,874.52	4,880.74	4,883.26	4,869.83	-	-
05/07/18	4,880.49	4,877.34	4,875.27	4,881.69	4,883.76	4,871.33	-	-
Jun								
Jul								
Aug								
Sep								
Oct								
Nov								
Dec								

FORT LUPTON S&G MONITOR WELL NO.	MW-41 (now inactive)	MW-45	MW-47 (now inactive)	MW-52	MW-53 (now inactive)
NORTHING, FT	1285253.80	1286212.47	1282859.57	1284875.58	1284458.54
EASTING, FT	3187829.73	3189018.10	3188167.97	3188125.52	3186889.29
ELEVATION (TOG), FT	4870.83	4870.99	---	---	---
CASING HEIGHT, FT	3.19	3.28	---	---	---
ELEVATION (TOC), FT	4874.02	4874.27	4878.43	4878.28	4876.91

HIGH (max of first 2 yrs + 1) **4,875.02** **4,875.27** **4,874.43** **4,874.40** **4,874.28**

LOW (min of first 2 yrs - 1) **4,849.67** **4,851.42** **4,859.03** **4,858.08** **4,858.81**

01/05/17	4,862.92	4,853.47	4,876.83	4,870.38	4,874.61
02/09/17	4,862.72	-	4,876.93	4,866.28	4,874.61
03/08/17	4,862.72	4,852.47	4,876.93	4,864.98	4,874.71
April	-	-	-	-	-
May	-	-	-	-	-
06/01/17	4,862.72	4,858.27	4,877.58	4,875.48	4,875.31
07/05/17	4,862.67	4,856.57	4,877.48	4,875.68	4,875.41
08/04/17	4,862.62	4,857.17	4,877.53	4,876.08	4,875.61
09/05/17	4,862.52	4,856.52	4,877.43	4,875.68	4,875.41
10/04/17	4,862.47	4,855.42	4,876.78	4,874.68	4,874.41
11/03/17	4,862.47	4,854.07	4,874.08	4,872.48	4,871.86
12/08/17	4,861.97	4,853.17	4,873.28	4,871.18	4,870.86
01/10/18	4,859.42	4,852.42	destroyed	4,870.88	4,870.56
02/09/18	4,858.02	4,852.27	-	4,871.28	destroyed
03/07/18	mined out	4,852.12	-	4,871.08	-
04/04/18	-	4,854.07	-	4,870.43	-
05/07/18	-	4,857.62	-	4,870.58	-
Jun					
Jul					
Aug					
Sep					
Oct					
Nov					
Dec					



				REV. #		BY	DATE	DESCRIPTION		
				A		-	-	-		
				B		-	-	-		
				DRAWN BY: HGK		L.G. Everist, Inc. Aggregate Producers 7321 E. 88th Ave, Suite 200 Henderson, CO, 80640 (303) 286-2245			Active MW Locations	
DATE: 5/29/2018										
SCALE: Not to scale				L.G.E. Ft. Lupton Resource Weld County, CO						
SIZE: 11x17										