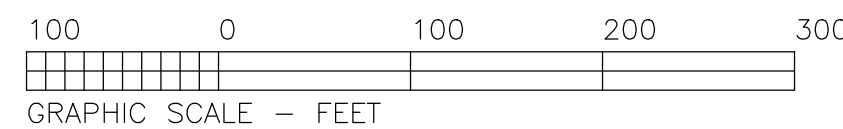
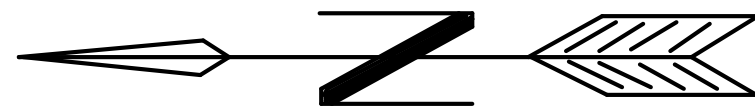


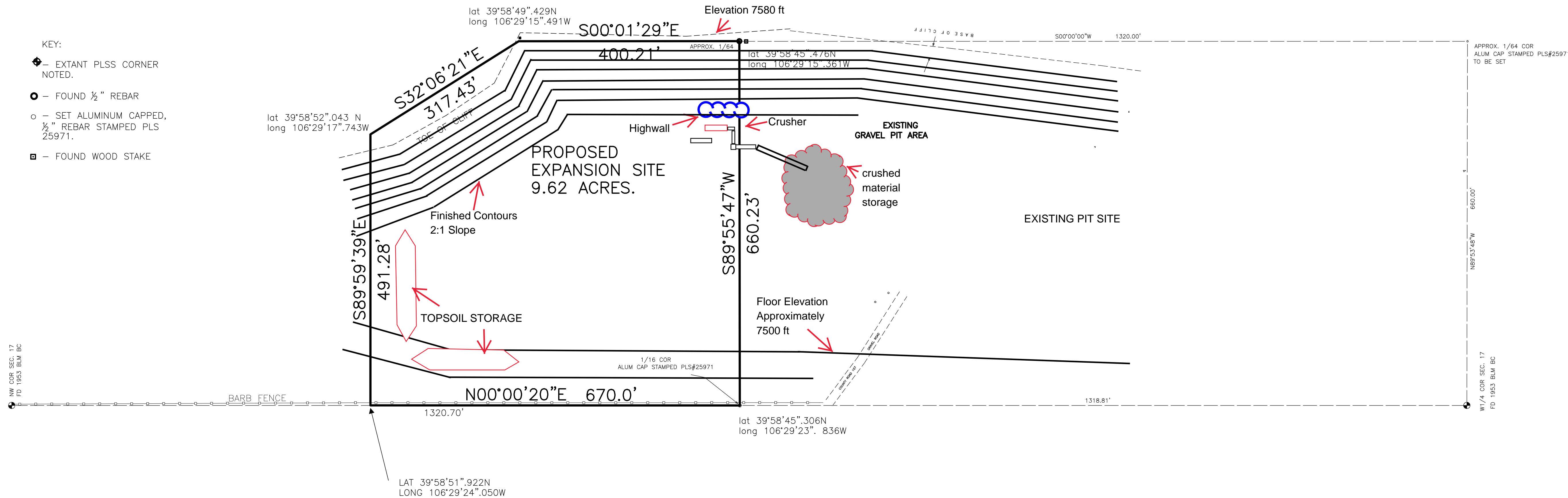
PROPOSED EXPANSION SITE MAP
"INSPIRATION POINT GRAVEL PIT"
PART OF THE NW1/4 SEC. 17
TOWNSHIP 1 SOUTH, RANGE 81 WEST, 6TH PM
GRAND COUNTY, COLORADO



CONTOUR INTERVAL - 2'
BASIS OF ELEVATION - 7600 AT TOP OF BC W1/4 SEC. 17,
APPROXIMATELY PER USGS TOPO MAP.
BASIS OF BEARINGS: N00°00'00"E, ASSUMED BETWEEN THE W1/4
BC AND NW COR BC SEC. 17.
LATITUDES/LONGITUDES BASED ON NAD83 DATUM.

KEY:

- EXTANT PLSS CORNER NOTED.
- FOUND 1/2" REBAR
- SET ALUMINUM CAPPED, 1/2" REBAR STAMPED PLS 25971.
- FOUND WOOD STAKE



GRAND
COUNTY SURVEYOR
WARREN D. WARD
COLORADO PLS #25971

COURT HOUSE
HOT SULPHUR SPRINGS, COLORADO 80451
PHONE (303) 725-3347
EXT. 208

PROPOSED EXPANSION SITE MAP "INSPIRATION POINT GRAVEL PIT" PART OF THE NW1/4 SEC. 17 TOWNSHIP 1 SOUTH, RANGE 81 WEST, 6TH PM GRAND COUNTY, COLORADO		
SCALE: 1"=100'	APPROVED BY:	DRAWN BY: WW
DATE: 5-27-94		REVISED: 10-14-17
CRD FILE G87 SCRNI FILE G87100 LAY: 41-45		JOB NO. G87
		SHEET OF