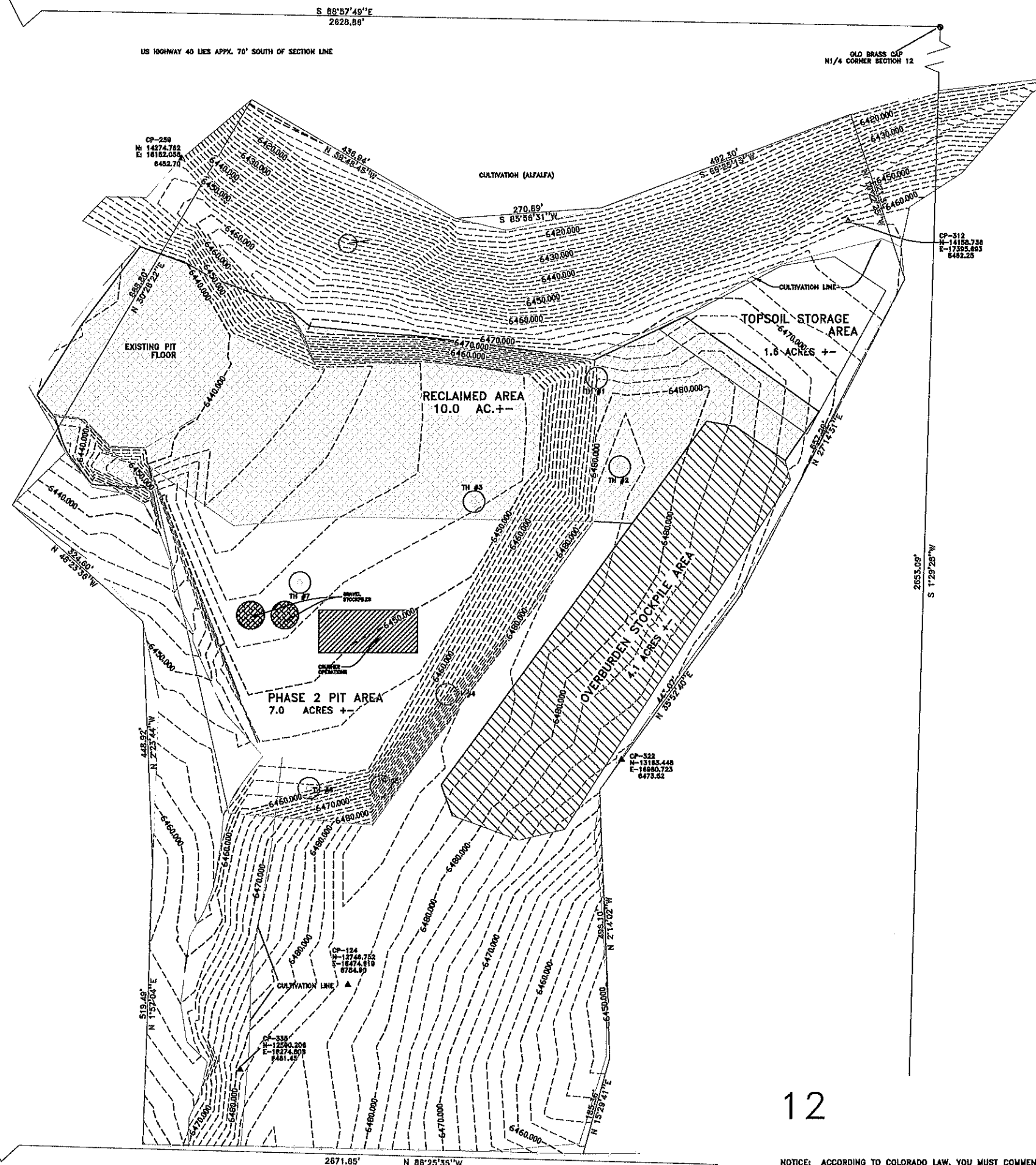


# MINING PLAN, PHASE 2 NW1/4 SECTION 12, T6N R88W, 6TH P.M. ROUTT COUNTY, COLORADO (FUNK GRAVEL PIT)

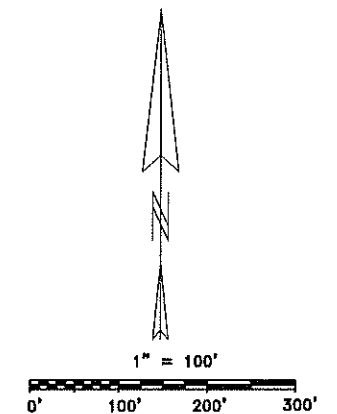


## NOTES:

1. PIT SLOPES NO GREATER THEN 2:1, THE FLOOR WILL DRAIN AT 1% TO WEST.
2. A TOTAL RETENTION SETTLING POND WILL BE CONSTRUCTED AS SHOWN TO CAPTURE ALL STORM RUNOFF. THE EXISTING CREEK WILL BE PROTECTED FROM RUNOFF BY INSTALLING SILT FENCE AND STRAW BALES AS NOTED.
3. THE PROPOSED TOPSOIL AND OVERBURDEN STOCKPILES WILL BE SURROUNDED BY BERMS AND/OR SILT FENCE.
4. ALL STAGING AREAS WILL BE BERMED TO CONTAIN ANY SPILLAGE (FUEL, ETC.)
5. INITIAL LAND SURVEY PROVIDED BY DOWLING LAND SURVEYORS.

## NOXIOUS WEED NOTES:

1. WEED CONTROL IS BEING CONDUCTED IN ACCORDANCE WITH THE APPROVED WEED CONTROL PLAN. WEED CONTROL IS BEING CONDUCTED AND MONITORED BY THE ROUTT WEED DEPARTMENT.
2. THE WEED SPECIES THAT EXIST ARE AS FOLLOWS:
  - CANADA THISTLE
  - DALLMAN TOADFLAX
  - BULL THISTLE
  - HOUNDS TONGUE
  - KOSHIA
3. THE HERBACIDES USED TO TREAT THE ABOVE WEEDS ARE AS FOLLOWS:
  - 80 GAL SOLUTION WAS APPLIED TO THE AREA THAT CONSISTED OF
  - MILESTONE AT 7 oz./AC
  - TELAR AT 1 oz./AC
  - MCPA 32 oz./AC
4. THE SITE WAS TREATED WITH HERBACIDE ON 06/30/2017.



● INDICATES MONUMENT FOUND AS NOTED

▲ INDICATES SURVEY CONTROL POINT

CONTOUR INTERVAL = TWO FEET

ELEVATIONS BASED ON USGS TOPO MAP ELEVATION AT W1/4 CORNER OF SECTION 12 - 6500.00

ROUTT COUNTY ROAD AND BRIDGE		MINING PLAN, PHASE 2		
NW1/4 SECTION 12 T8N R88W, 6TH P.M.				
ROUTT COUNTY, COLORADO				
SCALE	DWG	DATE	REV	FILE
1"=100'	MTM	3/17/14		FUNKPLAN