

Google earth

feet
meters

1000

400

IMAGE FROM 2013.

PERIMETER AND APPROXIMATE AREAS OF TARGETS "A" AND "B" AND FUTURE TARGET "C".

NOTE: TO REACH FUTURE TARGET "C", 2 ACRES OF ROAD WILL BE

CUT ALONG THE ROUTE.

by W. H. HUTCHINSON

N

SAINT ELMO QUADRANGLE CHAFFEE COUNTY CO 7.5 MINUTE SERIES 2013



EXHIBIT "B" Rule 6.3.2. PRECIPITATION AND SNOW MELT DRAIN SUBSURFACE TO JOIN THE DRAINAGE OF BALDWIN GULCH. FROM BALDWIN GULCH IT FLOWS INTO BALDWIN CREEK.

PREPARED BY W.H. HUTCHINSON

Target Area "C"

Target "C" is known as the "Snow Patch" and is not a target for this year but will be included in this permit application. The GPS coordinates for this block are; a. 38.668398, - 106.252332 b. 38.668716, - 106.2510930 c. 38.669755, - 106.251604 d. 38.669458, - 106.253089. The formal target within this area has not yet been identified. The actual dig would be approximately 40 feet across a headwall with an average height of 6 to 10 feet as the excavator works uphill following the producing pegmatite. The depth of the dig is limited first by the permafrost then by hard rock followed by the reach of the excavator's arm to a maximum of approximately 12 feet. This site is on a steep slope 1/2 to 1/3 and the excavator uses techniques to prevent rock fall and to stabilize the slope. As the excavator moves across the slope a berm is created to catch any falling rock. Large rocks are gently pulled down in a controlled fashion and placed on the berm. This berm serves as a catch basin as well as a reclamation pile to be pulled back up the slope to reestablish the normal slope of the hill.

This target has an approximate surface area of 3.5 acres.

Maps A and B illustrate the Target Areas. Google Earth 2011

Water systems in the mining area.

Water resources in the area are limited to permafrost under the surface of the mining areas and direct rainfall. Normal rain and the melt from these mining areas of frozen subsurface water flow (subsurface) to the tree line near where the USFS CR 278 crosses the tree line. From there it enters the Baldwin Gulch Drainage which then flows into Baldwin Creek. Baldwin Gulch typically flows a cloudy white during rain or warm melt days due to the natural weathering of the rock. No foreign elements would be introduced to the water system.

Exhibit "B" Site Description

The Blue Star Claims are found above timberline with no structures and minimal plant life.

Target Area "A"

Target area "A" is a four sided area on the top of the south knob being approximate GPS coordinates;

Corner; a. 38.667289, - 106.249119, b. 38.667035, - 106.249622 c. 38.667496, - 106.250201

d. 38.667672, - 106.249746

This target has an approximate surface area of .75 acres. The excavator cut anticipated for this year would be approximately 20' X 40' and would occur within this target area with a maximum depth of twelve feet deep limited by permafrost, hard rock or the reach of the excavator's arm. The midpoint of excavation is approximately 100' south of the North line and 100' east of the West line of the Blue Star #6 claim at GPS 38.667346, - 106.249707. This would be a maximum of 800 sq. ft. of surface disturbance from the excavator and an equal or less area for the overburden "reclamation pile".

This is on a high topographic elevation with minor slope to the north. The slope increases to the north and the excavator will dig north to south to access the known pegmatite target. This site being on the upper portion of the south knob has seen a great deal of foot and motor traffic. We taped off the area using caution tape during active operations.

Target Area "B"

Target "B" would be on the north face of the south knob 180' south of the North Line and 200' west of the East Line of the Blue Star #6 claim being approximate GPS coordinates;

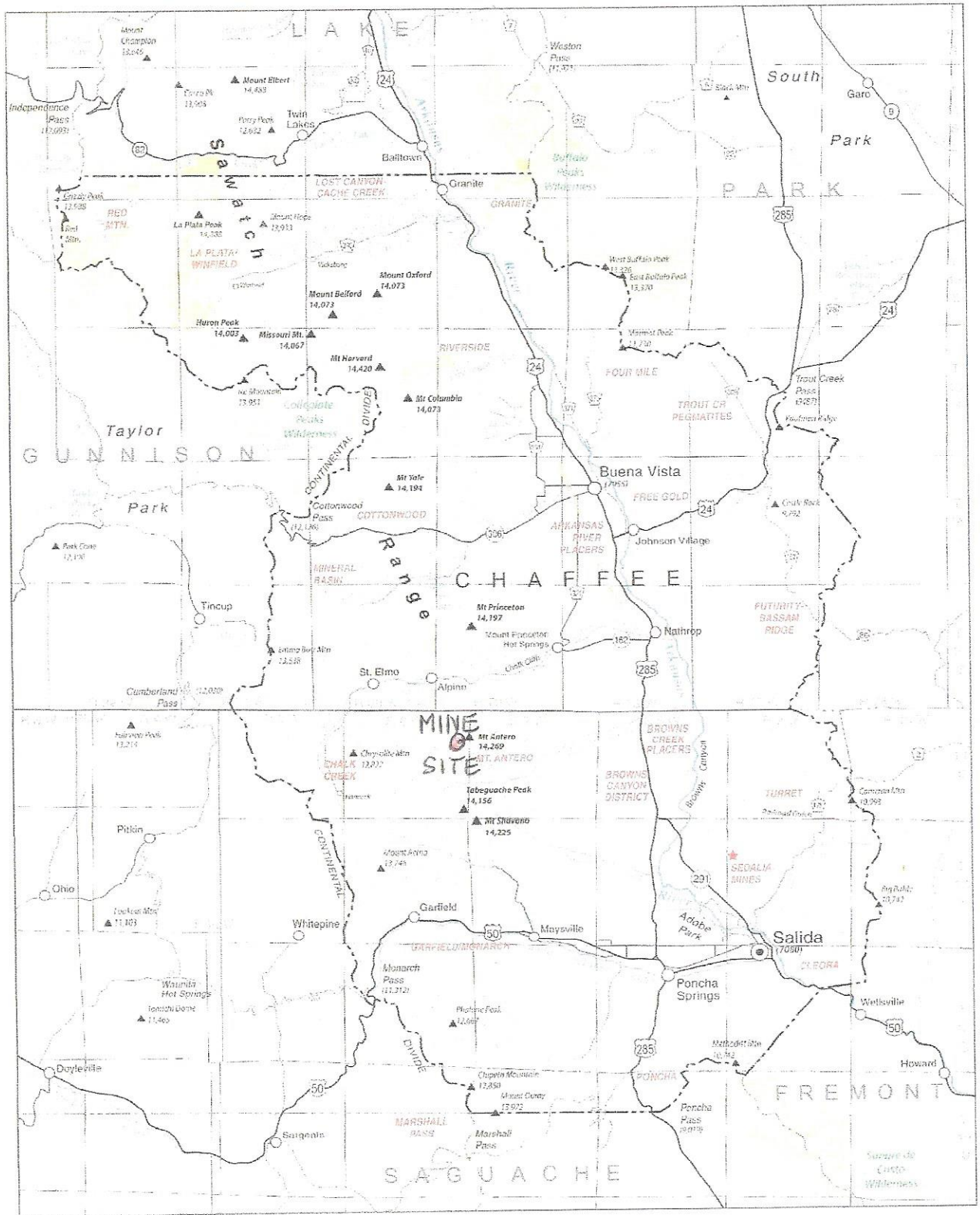
Corner; a. 38.668296, -106.248305 b. 38.667922, - 106.249081 c. 38.668246, - 106.249537

d. 38.668631, - 106.248794

This target has an approximate surface area of 1 acre.

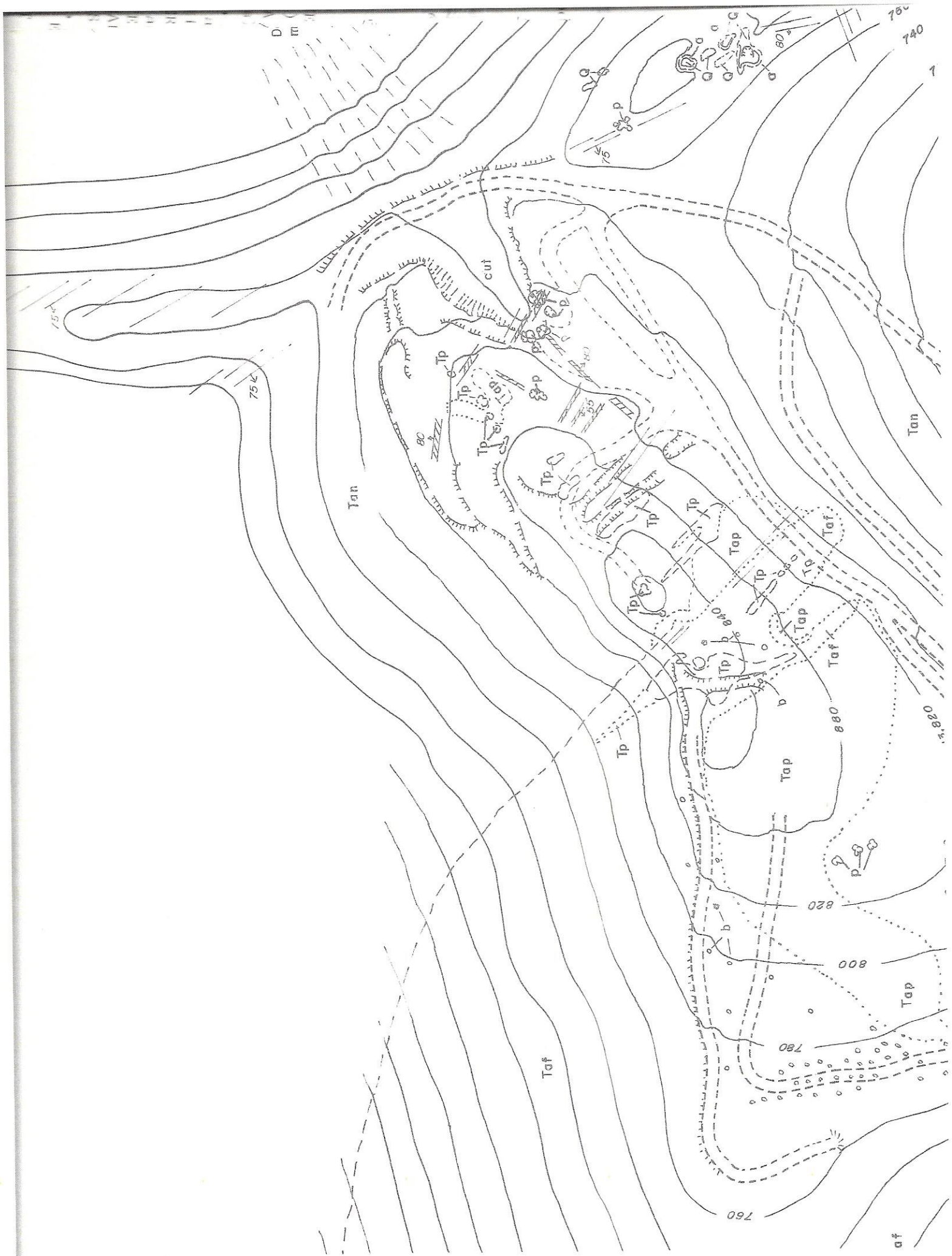
This site is on a steep slope 1/2 to 1/3 and the excavator uses techniques to prevent rock fall and to stabilize the slope. As the excavator moves across the slope a berm is created to catch any falling rock. Large rocks are gently pulled down in a controlled fashion and placed on the berm. This berm serves as a catch basin as well as a reclamation pile to be pulled back up the slope to reestablish the normal slope of the hill. This is an in-situ rock extrusion with abundant freeze thaw fracturing. Although only 6 to 8 feet deep the digging is difficult even with heavy equipment. The rock is all granite with heavy to moderate weathering till the solid rock out crop is intersected. A head wall of 40' across will expose the pegmatite to follow which runs from upper left to lower right as you face the wall. We keep the height of this wall down to avoid any rock fall. A maximum depth of twelve feet deep limited by permafrost, hard rock or the reach of the excavator's arm. This location is approached from the east from the old road across the north face of the south knob beginning at the "Parking Lot". The overburden "reclamation pile" will be kept up hill to the side of the active operation.

MAP A OF EXHIBIT "A"



GENERAL MAP OF CHAFFEE COUNTY COLORADO
SHOWING APPROXIMATE LOCATION OF MINE SITE,
BLUE STAR CLAIMS

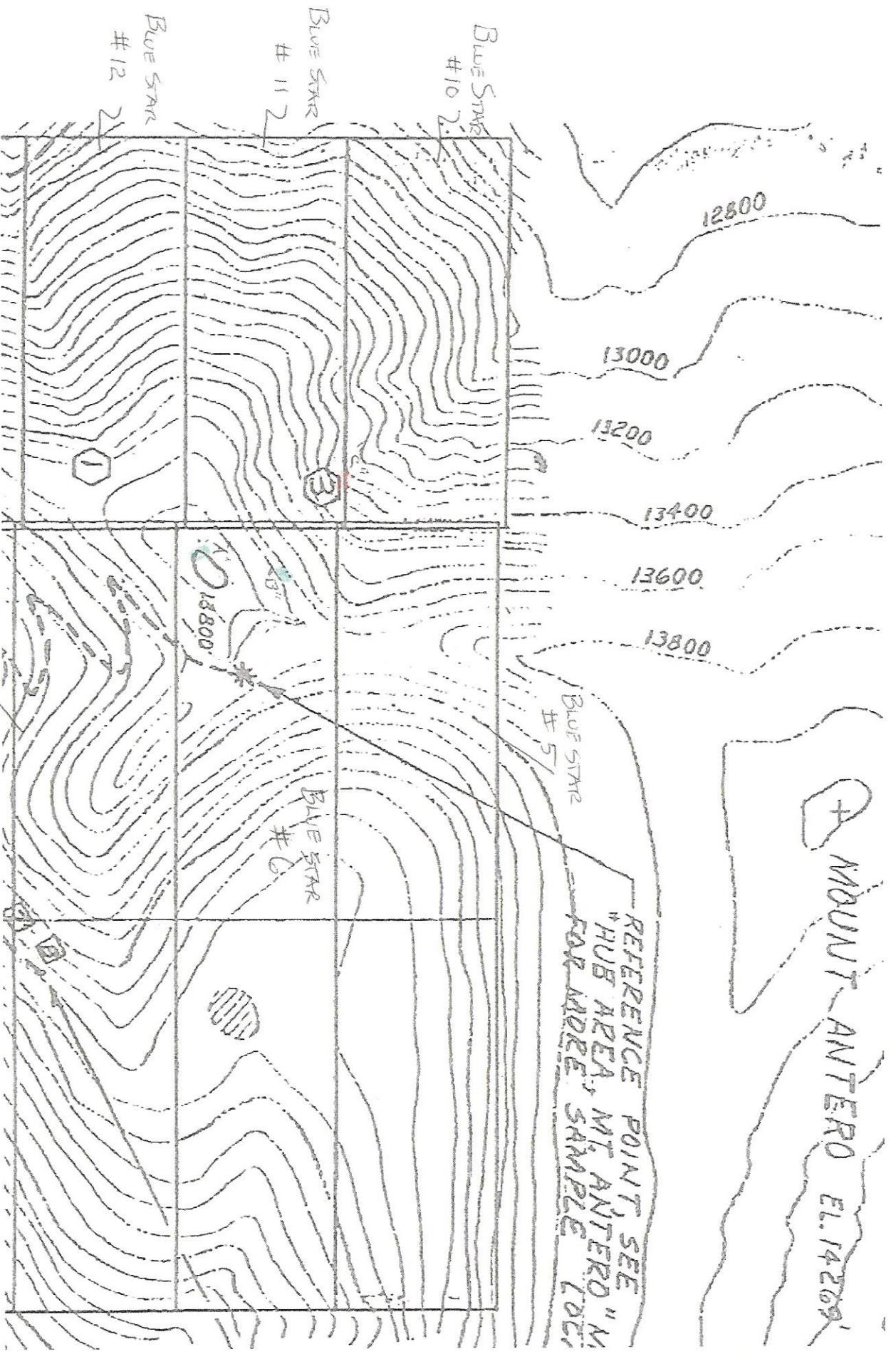
6 miles



⊕ MOUNT ANTERO EL. 14269'

↖ N

REFERENCE POINT, SEE "HUB AREA, MT ANTERO" MAP FOR MORE SAMPLE LOC.



PORTION OF MAP DRAWN BY W.N.

STARR 1976

by W.H. HUTCHINSON

- "PARKING AREA"
- ▣ 15'x20'x40' TARGET AREA for 2014
- ▣ 2" 20'x40' TARGET
- ▣ FUTURE SITE

7/2014

Exhibit "C" Mining Plan

Mining Plan

The operation will use existing roads to access the target locations.

Directions to the mining site.

From highway 285 just outside Nathrop, CO turn west on County Road 162 and drive west to the area near Alpine CO then turn south on County Road 277 (a well-used four wheel drive road) to where it crosses Baldwin Creek then follow County Road 278 to the "saddle" where you follow 278A to the summit of the South Knob of Mount Antero. All existing dirt access roads are 8-10 feet wide in general. There are tight areas up on the upper switchbacks but the excavator has no problem negotiating the turns. The only repairs made on the access roads are those requested from the National Forest. In the past it was requested that we repair drainage bars, fill washouts and do other minor repairs for safety reasons. None of these repairs were to allow the excavator access as it could have gone directly to the dig site.

Mill Site.

On the way up you would cross through the Blue Star Mill Site. This Mill Site is where the camping and final field rinsing take place. The Mill Site is a quarter mile up CR 278 from the crossing of Baldwin Creek. Here you cross Baldwin Gulch Drainage and intersect an old road cut from the late sixties which runs toward the Silver Star Claims. The base camp will be set up at 11,000 feet on this Blue Star Mill Site. Canvas Tents provide housing for the two people (on site geologist and machine operator) who stay on the mountain. All waste (human and otherwise) will be removed from the mill site at end of season.

Water usage.

A small amount of water (< 5 gallons) is typically used to "wash" a face of the pegmatite when crystals are found. This is usually from the melt from the immediate area and sinks into the subsurface with the rest of the permafrost melt. This just helps us identify the mineralization occurring in the pocket. Down at the mill site a 30-50 gallon container will use circulating water (probably a battery operated pump connected to one of the vehicles.) to rinse the clays off the better mineral specimens. This amounts to less than a five gallon bucket of mined material brought down to the mill site a week. The material we are after are the small but valuable gems and the best of the mineral specimens and are never a great volume. The water would be collected at the Baldwin Gulch creek which runs near the mill site. Often we just bring the specimens directly off the mountain and clean them at the claim owner's property off the mountain. The solids from operations at the mill site are returned to the dig site for reclamation and the water is used to douse the fire pit. Operation of the pump and wash basin expected to be less than 30 minutes a day. Most of the material that is dug will remain at the dig site in reclamation dump piles.

Access Roads at the mine.

As stated above the main access road is CR278A. This is a four-wheel drive road of switchbacks that lead to the summit of the South Knob of Mount Antero. The summit of the South Knob has many old mining roads on it, (see attached map dated 1976 with updates) and can be seen on the Google Earth pictures from the initial 1999 image onward.