

**Question 22.**

**2017 RECLAMATION MAPS**

Map 1 – Depicts the permit boundary, current affected area boundary, the acreage currently affected, and any acreage disturbed in the reporting year.

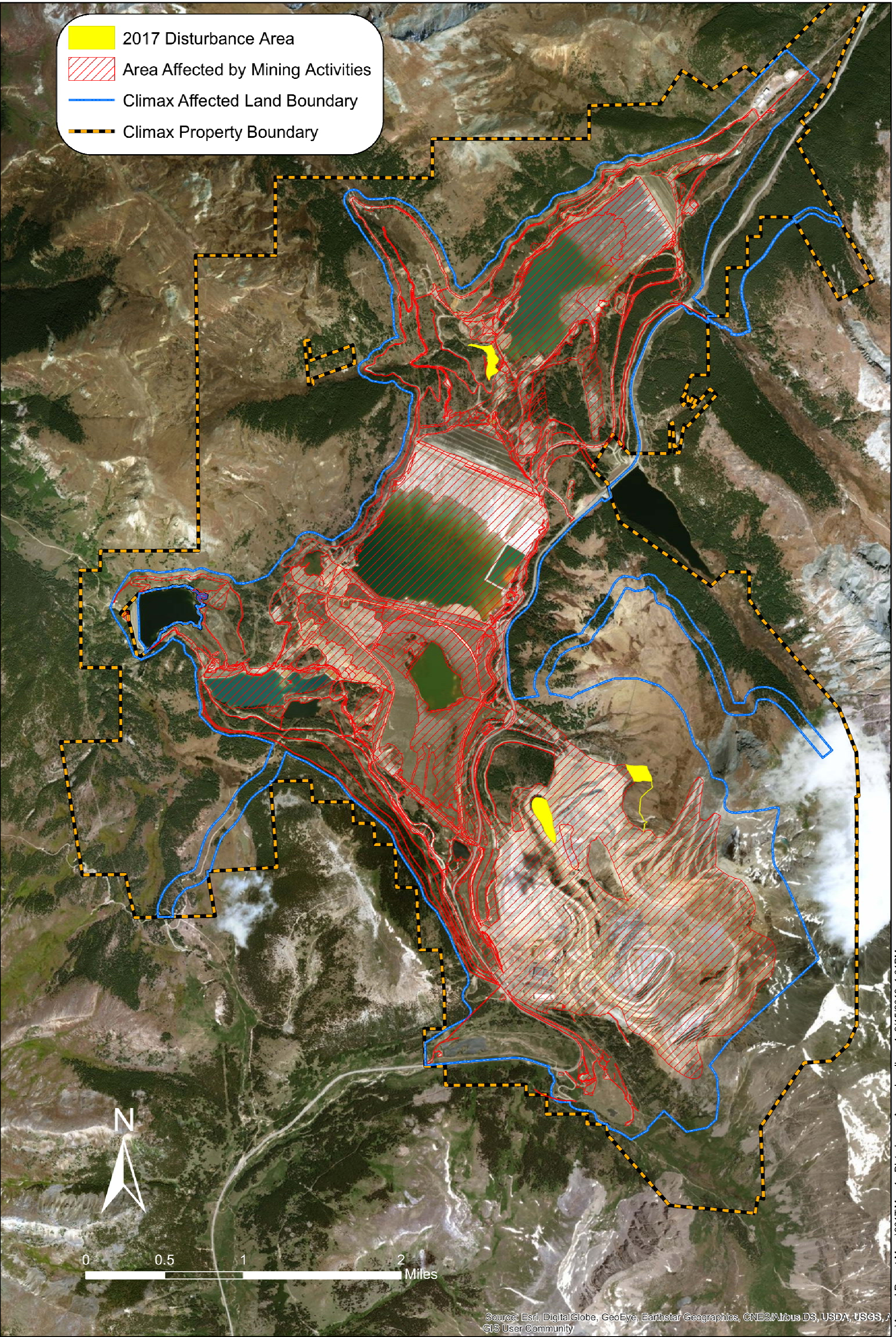
Map 2 – Depicts the total acreage that has been reclaimed and the acreage where reclamation is in progress.


Map 3 – Depicts the acreage where reclamation is in progress that has been graded and/or covered with topsoil.

Map 4 – Depicts the acreage where reclamation is in progress that has been seeded, mulched, or fertilized.

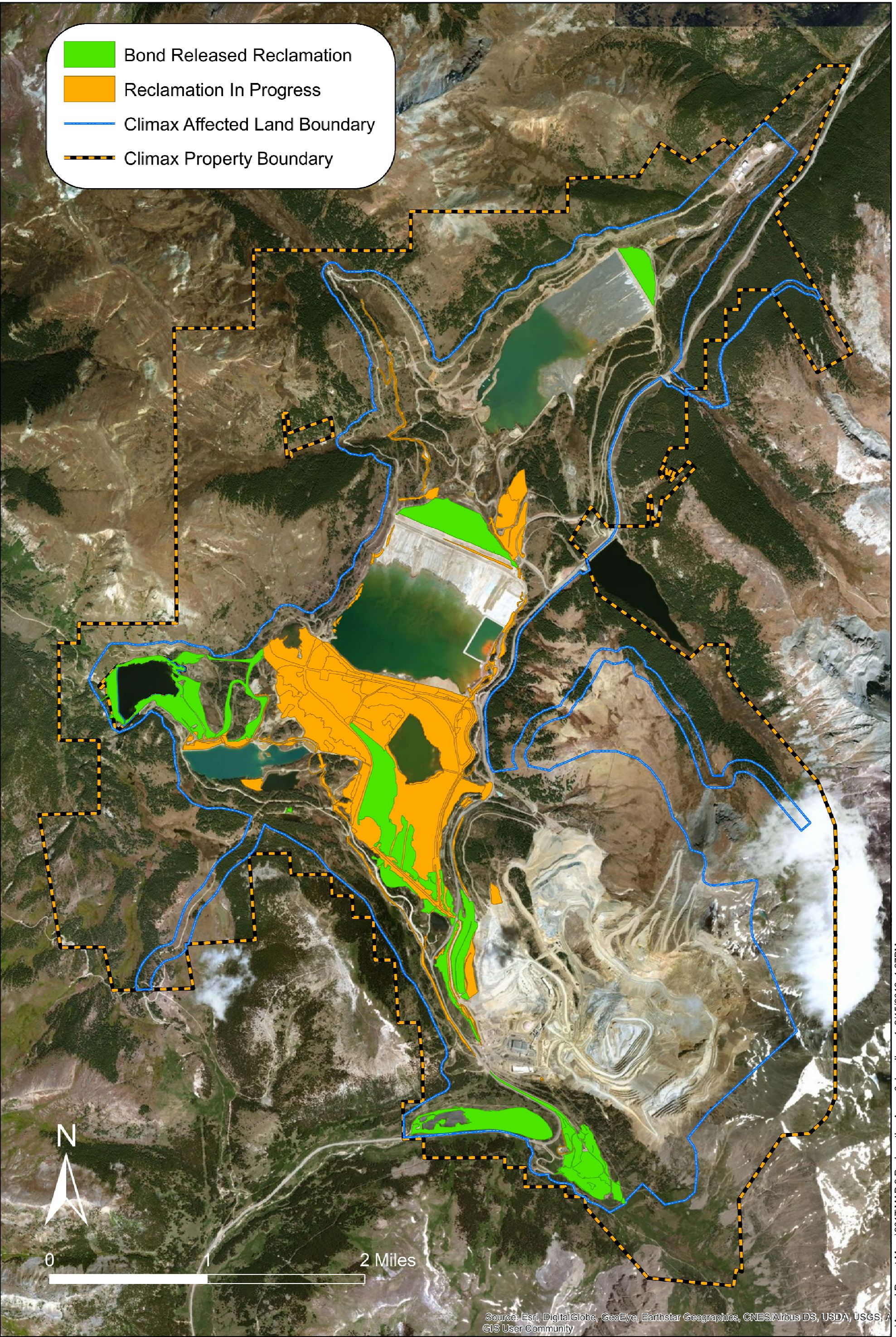
Weed Control Maps – As described in question 14, maps describing where and what treatments were provided.






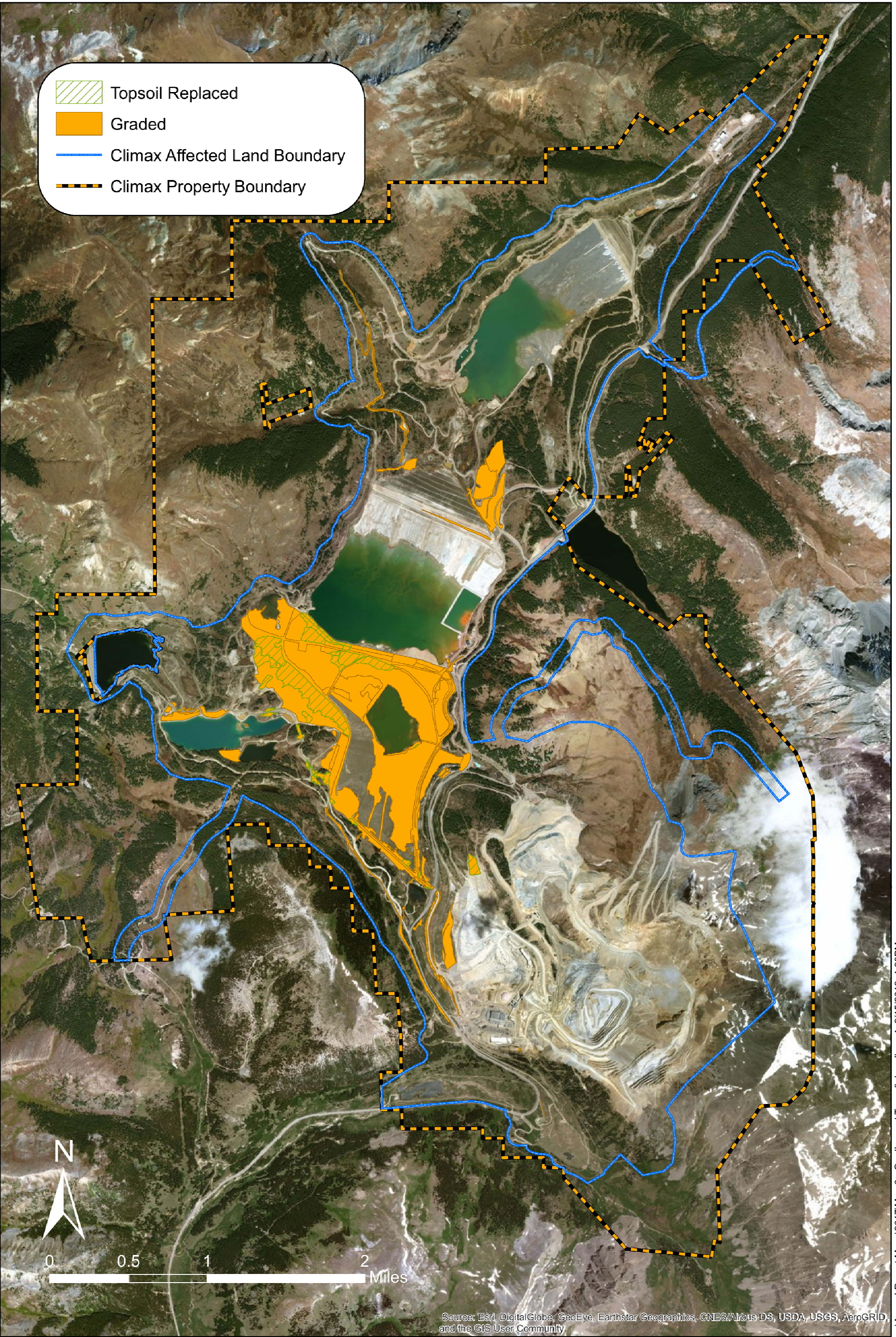
REVISIONS				SCALE: 1: 35,000		SHEET SIZE ANSI B		DIVISION: ENVIRONMENTAL DEPT.					
REV No		BY	DATE	ENG'D BY:	DATE:	<div>CLIMAX OPERATIONS</div> <div>CLIMAX Molybdenum</div> <div>A Freeport-McMoRan Company</div>				AREA:		DWG. NO.	
A	MODIFIED LAYOUT	JH	2/14/18							TITLE:			
1				DWN BY: JH	DATE: 2/14/18					2017 ANNUAL REPORT MAP 1 - DISTURBANCE AREAS			
2				CHKD BY: JH	DATE: 2/15/18								
3				APVD BY: DK	DATE:								
								REVISION:					
								SHT.		OF			





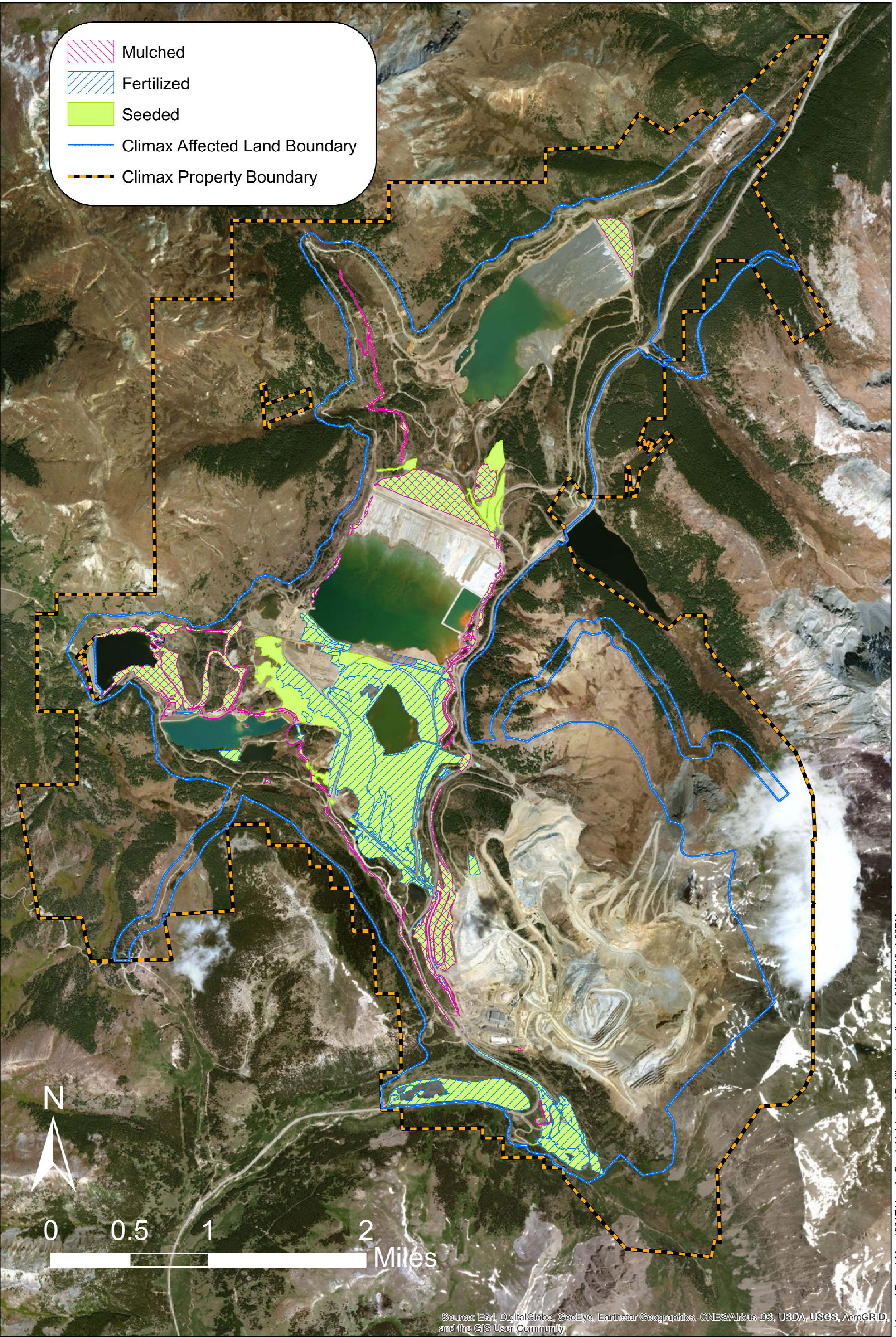
REVISIONS				SCALE: 1:35,000		SHEET SIZE: ANSIB		DIVISION: ENVIRONMENTAL DEPT.	
REV No		BY	DATE	ENGD BY:	DATE:			AREA:	
A	MODIFIED LAYOUT	JD	2/15/18					TITLE:	
1				DWN BY: JD	DATE: 2/15/18	<div>CLIMAX OPERATIONS</div> <div> <b>Climax Molybdenum</b> A Freeport-McMoRan Company</div>		2017 ANNUAL REPORT MAP 2 - RECLAMATION AREAS	
2				CHKD BY: JH	DATE: 2/15/18			DWG. NO.	
3				APVD BY: DK	DATE:			REVISION:	
								SHT.	OF





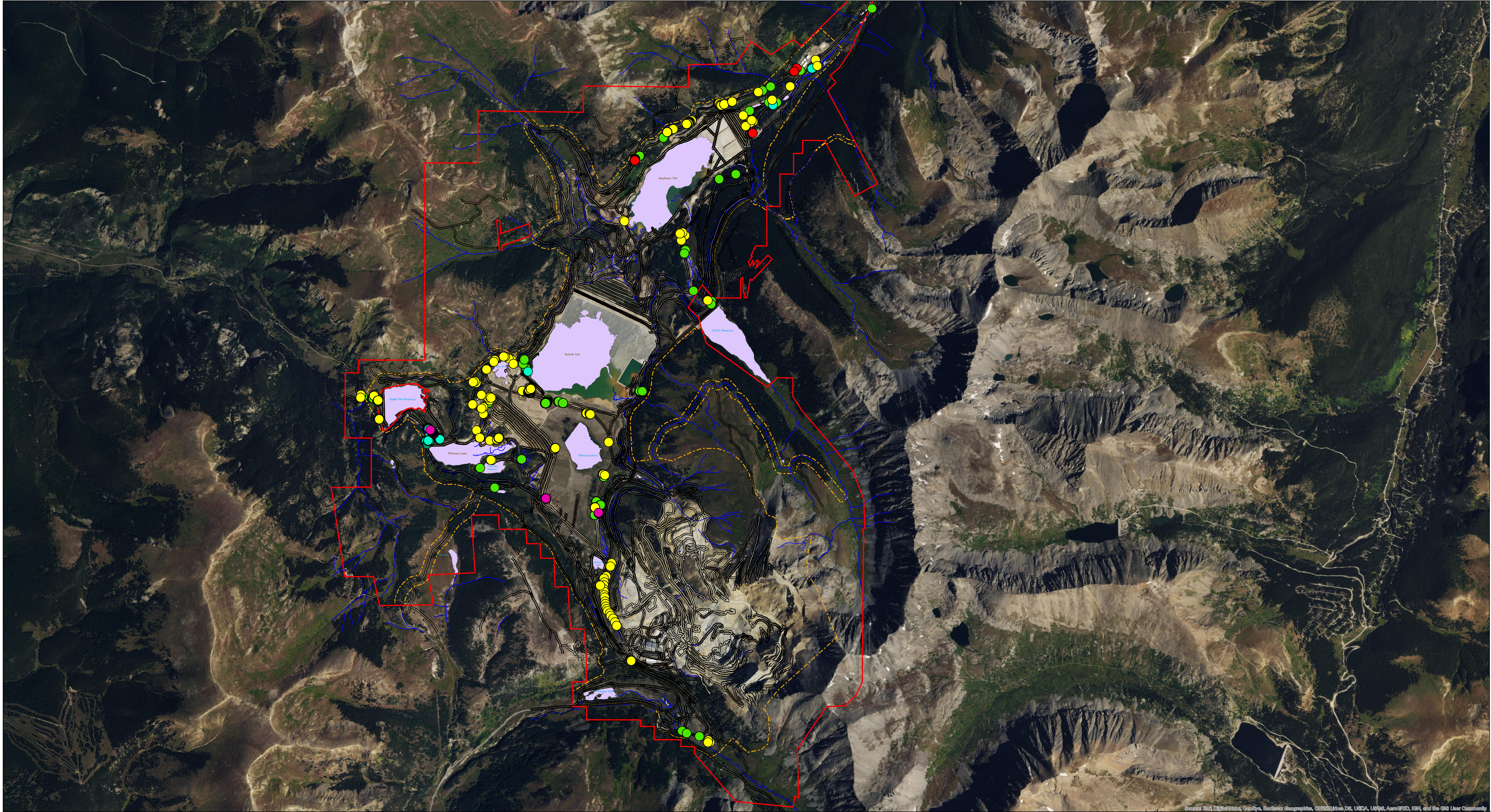
REVISIONS				SCALE: 1:35,000		SHEET SIZE: ANSIB		DIVISION: ENVIRONMENTAL DEPT.	
REV No		BY	DATE	ENGD BY:	DATE:			AREA:	
A	MODIFIED LAYOUT	JD	2/15/18					TITLE:	
1				DWN BY: JD	DATE: 2/15/18	<div>CLIMAX OPERATIONS</div> <div> Climax Molybdenum</div> <div>A Freeport-McMoRan Company</div>		2017 ANNUAL REPORT	
2				CHKD BY: JH	DATE: 2/15/18			MAP 3 - GRADING AND TOPSOIL	
3				APVD BY: DK	DATE:			DWG. NO.	
								REVISION:	
								SHT.	OF





REVISIONS				SCALE: 1:35,000		SHEET SIZE		DIVISION: ENVIRONMENTAL DEPT.	
REV No		BY	DATE	ANSI B	DATE:	AREA:		TITLE:	
A	MODIFIED LAYOUT	JD	2/15/18	ENG BY:	DATE:	<div> <b>Climax Molybdenum</b> A Freeport-McMoRan Company</div>		2017 ANNUAL REPORT MAP 4 - SEED, MULCH, AND FERTILIZER	
1				DWN BY: JD	DATE: 2/15/18			DWG. NO.	
2				CHKD BY: JH	DATE: 2/15/18			REVISION:	
3				APVD BY: DK	DATE:			SHT. OF	

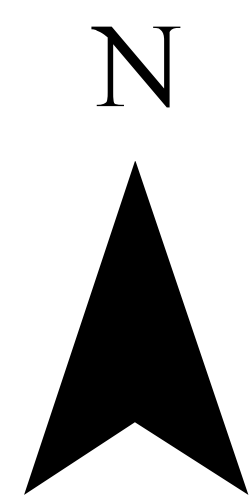




Source: Esri, DigitalGlobe, GeoEye, Earthstar Geographics, CNES/Airbus DS, USDA, USGS, AeroGRID, IGN, and the GIS User Community

- |                     |                        |
|---------------------|------------------------|
| ● Plumeless thistle | — Property Boundary    |
| ● Mayweed chamomile | — Roads                |
| ● Oxeye daisy       | — Streams              |
| ● Yellow toadflax   | ■ Lakes/ Tailing Ponds |
| ● Canada thistle    | - - - Affected Area    |

0 0.75 1.5 3 Miles



Climax Mine	
2017 Herbicide Treatment Locations	
www.habitatmanagementinc.com	Drawn by: JF
	Date: 12/21/2017
	REVISIONS