

J. E. STOVER & ASSOCIATES, INC.

2352 NORTH 7TH STREET, UNIT B
GRAND JUNCTION, COLORADO 81501
PHONE: (970) 245-4101, FAX: (970) 242-7908

MINE ENGINEERING
MINE RECLAMATION

CIVIL ENGINEERING
CONST. MANAGEMENT

January 31, 2018

Ms. Janet Binns
Colorado Division of Reclamation, Mining & Safety
1313 Sherman Street, Room 215
Denver, CO 80203

Re: Snowcap Coal Company, Inc.
2017 Annual Reclamation Report
Permit No. C-1981-041

Dear Ms. Binns:

On behalf of Snowcap Coal Company, Inc. we are submitting the enclosed information, in accordance with Rule 2.04.13, as the 2017 Annual Reclamation Report for Snowcap Coal Company's Roadside North and South Mines.

As per revised Rule 2.04.13(1)(e) enclosed is a copy of the seed mix tag that was used during the year.

Please call if you have any questions concerning this report.

Sincerely,



Tonya K. Hammond
Owner's Representative
Snowcap Coal Company, Inc.

Enclosures

cc: SCC File

Colorado Division of Reclamation, Mining and Safety

Annual Reclamation Report for the Year 2017

Roadside Portals	C-1981-041	Snowcap Coal Company
mine name	permit #	Permittee
Address: <u>P. O Box 1430, Palisade, CO 81526</u>		

This report, required by Rule 2.04.13, is due by February 15 of each year, or other date, as agreed upon by the Division. It should include text, discussion, and maps, at a minimum, in addition to any other reclamation monitoring data as required by the approved permit. The location of the acreage reported under each land status category and year of seeding (if applicable) should be clearly and accurately identified on a map included with the report.

Land Status Category	Last Years Cumulative Total		This Calendar Year		Cumulative Total ¹
Acres disturbed	241.7	+	-0.2	=	241.5
Acres backfilled and graded	230.0	+	0	=	230.0
Acres topsoiled	131.6	+	0	=	131.6

Seeding typically begins the minimum 10-year reclamation liability period. Please report the acres for each category below. Do not include acres that have achieved final, Phase III release.

	Last Years Cumulative Total		This Calendar year		Cumulative Total ¹		10 years or less		Greater than 10 years ¹
Acres seeded*	157.1	+	0.0	=	157.1	=	19.3	+	137.8

*include, if necessary, a description of any augmented seeding or cultural practices

For the Entire Life of Mine, the total number of acres disturbed 241.5 and the total number of acres:
Phase I released 241.5 Phase II released 239.1 Phase III released 231.1

For Mines in Permanent Cessation:

Total acreage in facilities subject to reclamation but yet to be completed N/A

For Government Performance and Results Act

Acreage in long-term mining or reclamation facilities ² 0.0

Acreage in active mining areas ³ 0.0

¹ (exclude acres where Phase III release has been achieved)

² Includes haul and access roads; temporary dams and impoundments; permanent dams and impoundments; diversion and collector ditches, water and air monitoring sites; topsoil stockpiles; overburden stockpiles; repair, storage and construction areas; office area, repair shops, and parking; coal stockpiles, loading, and processing areas; railroads; coal conveyors; nonbackfilled and graded areas of refuse piles, coal mine waste impoundments, head-of-hollow fills, and valley fills; ventilation shafts and entryways; and noncoal waste disposal area (garbage dumps and coal combustion by-products disposal areas).

³ Includes pits, topsoil stripped areas in advance of pits, and spoil not backfilled and graded

SNOWCAP COAL COMPANY, INC
2017 ANNUAL RECLAMATION REPORT
January 31, 2018

- (a) Permittee: Snowcap Coal Company, Inc.
P.O. Box 1430
Palisade, CO 81526
Permit No. C-1981-041
- (b) Area Disturbed - No new disturbance was created by Snowcap Coal Company, Inc. during the year. Due to an error in past reporting, 0.2 acres were removed from the mine related disturbed acres with the approval of MR-85, bringing the total "Acres Disturbed by Mining Activities" to 241.5 acres. With the approval of TR-69 in July 2017, 0.4 acres were approved for additional disturbance in accordance to SCC's hydrologic communication repair plan. These acres will not be included in SCC's Annual Reclamation Report until the actual disturbance is created. There are no other remaining mine related disturbances to be reclaimed.

Areas previously reclaimed are as follows:

<u>Description</u>	<u>Acres</u>
Permanent Flood Control Dike (No. 2 Below) (Ph III release on 2.8 acres in 2011)	2.8
South Lease Exploration (No. 3 - 4 Below) (Ph III release on 7.0 acres in 2015)	7.0
North Decline (No. 5 - 6 Below) (Ph III release on 12.7 acres in 2015 and 0.5 acres in 2017)	18.6
Northwest Intake (No. 7 Below) (Ph III release on 0.1 acres in 2015)	0.1
Cameo Refuse Disposal Area No. 1 (No. 8 Below) (Ph III release on 10.3 acres in 2015)	10.3
Cameo Refuse Disposal Area No. 2 (No. 9 Below) (Ph III release on 7.5 acres in 2015)	7.5
Cameo Borrow Area No. 1 and Sump (No. 10 Below) (Ph III release on 2.5 acres in 2015 and 0.3 acres in 2017)	2.8
Cameo Refuse Disposal Area No. 1 (Misc) (No. 11 Below) (Ph III release on 2.2 acres in 2015)	2.2
South Fan (No. 12 Below) (Ph III release on 0.9 acres in 2015)	0.9
2 West Portals - partial (No. 13 Below) (Ph III release on 0.3 acres in 2015)	0.3
North Decline Mine Dewatering System (No. 14 Below) (Ph III release on 0.5 acres in 2015)	0.5
Roadside Refuse Borrow Area (No. 15 Below) (Ph III release on 3.4 acres in 2015)	4.5
Roadside Refuse Disposal Area including Upper Diversion (No. 16 Below) (Ph III release on 1.3 acres in 2010 and 7.1 acres in 2015)	8.4
Roadside South Portal Old Upper Diversion Ditch (No. 17 Below) (Ph III release on 1.1 acres in 2015)	1.1
Cameo Refuse Disposal Area No. 1 (No. 18 Below) (Ph III release on 13.8 acres in 2015 and 1.0 acres in 2017)	14.8

Cameo Refuse Disposal Area No. 2 (No. 19 Below) (Ph III release on 20.2 acres in 2015)	20.2
Cameo Borrow Area No. 2 and Pond 11 (No. 20 Below) (Ph III release on 2.1 acres in 2015; and 1.8 acres in 2017)	3.9
Roadside North Portal Mine Facilities, Stockpile Areas, G Substation and Sedimentation Control features (incl Pond 13) (No. 22 Below) (Ph III release on 21.1 acres in 2015; and 5.5 acres in 2017)	26.6
Substation B (No. 23 Below)	0.3
No. 2 West Portals (No. 24 Below) (Ph III release on 0.7 acres in 2015)	0.7
Cameo Refuse Disposal Area No. 2 Topsoil Piles (No. 25 Below) (Ph III release on 2.9 acres in 2015)	2.9
Conveyor Corridor from Xcel Culvert north to Haul Road #3 (No. 26 Below) (Ph III release on 0.5 acres in 2009 and 2.2 in 2011)	2.7
Conveyor Corridor from Xcel Culvert south to Transfer Bldg #2 and east of Colorado River (No. 27 Below) (Ph III release on 1.3 acres in 2009)	1.6
Substation A (No. 28 Below)	0.2
Roadside South Portal Mine Facilities, Stockpile/Prep Plant Area, Conv Tunnel under I-70, Pond 8 & Pond 9 (No. 29 Below) (Ph III release on 13.5 acres in 2010 and 0.9 acres in 2017)	14.4
Roadside South Portal Road to Old Upper Diversion Ditch (No. 30 Below) (Light Use Road #1)	1.9
Railroad Loop Track - South of I 9/10 Road (No. 31 Below) (Ph III release on 0.3 acres in 2009)	0.3
Cameo Refuse Disposal Area No. 1 Road (No. 32 Below) (Ph III release on 1.2 acres in 2017)	1.2
Unit Train Load-out, Railroad Loop Track/Conveyor Corridor & Roads (No. 33 Below) (Ph III release on 66.7 acres in 2011)	66.7
Cameo Refuse Disposal Area No 1 & 2 Sediment Ponds (6 & 10) (No. 34 Below) (Ph III release on 2.4 acres in 2017)	2.4
Total	227.8

Areas permanently disturbed are as follows:

Description

Access Road #2 (No. 5 Below) (Ph III release on 0.2 acres in 2015)	0.4
North Decline Diversion Ditches, 12" V-ditch & 12" CMP (No. 5 Below) (Ph III release on 0.3 acres in 2015)	1.3
Coal Gulch Realignment (No. 20 Below) (Ph III release on 1.4 acres in 2015)	1.4
Access Road to No. 2 West Portals (No. 21 Below) (Ph III release on 3.8 acres in 2015)	3.8
North Portal Upper Diversion Ditch (No. 22 Below) (Ph III release on 1.4 acres in 2015)	1.4
Top Soil Pile #2 (No. 22 Below) (Ph III release on 0.3 acres in 2015)	0.3
Haul Road #3 at UTL (No. 33 Below) (Ph III release on 0.9 acres in 2011)	0.9
Coal Creek Realignment (No. 34 Below) (Ph III release on 0.8 acres in 2015)	0.8

	Haul Roads to CRDA 1, 2 and 3 (No. 35 Below) (Ph III release on 3.4 acres in 2015)	3.4
Total		13.7
	Acres Disturbed by Mining Activities	241.5
	Less Previously Reclaimed Areas	227.8
	Less Permanently Disturbed Areas	13.7
	Equals Remaining Reclamation Acres	0.0

- (c) Area backfilled and graded – 0 acres during 2017.
- (d) Area Top-soiled – 0 acres during 2017.
- (e) Area Seeded – 0 acres during 2017. Normal husbandry inter-seeding was conducted at the North Decline in December 2017 where Ute Water had potholed a small area (approx. 40'x20') to locate their raw water line. Seed Mix is attached (seed mix approved by J. Ebert, DRMS, as reported in 2016 ARR).
- (f) Whitetop was treated in April, using Curtail, at Conveyor Corridor and Light Use Road #1. Halogeton was treated in June, using Chlorsulfuron, at the North Decline, Conveyor Corridor and Light Use Road #1.
- (g) Areas Seeded up through 2017. (Permanent)
1. **Blue Flame Mine** - Deleted - Reclamation work was performed voluntarily and therefore not required for this report.
 2. **Permanent Flood Control Dike** - between the overland conveyor and the river (see Permanent Flood Control Dike - TR01, Volume 7). Phase I Bond Release was approved on 2.8 acres with SL-2 on October 27, 2003. Phase II & III Bond Release was approved on 2.8 acres with SL-7 on April 26, 2011. Located in SW¼SE¼, Section 27, T10S, R98W, 6th P.M.
Area - 2.8 acres
Date - Fall 1985
Seed Mix - No seed mix information on file.
Phase III Bond Release - 2.8 acres
 3. **South Lease Exploration** - drill pads and access roads to drill holes PCC-04 through PCC-10 (see South Lease Exploration Plan - TR04, MR10 and MR11, Volume 8). Phase I Bond Release was approved on 4.0 acres with SL-2 on October 27, 2003. Phase II & III Bond Release was approved on 4.0 acres with SL-8 on November 14, 2015. Located in Section 12 and 13, T11S, R98W, 6th P.M. Reference Exhibit SL-07-021.
Area - 4.0 acres.
Date - Fall 1985
Seed Mix - No seed mix information on file.
Phase III Bond Release – 4.0 acres
 4. **South Lease Exploration** - drill pads and access roads to drill holes PCC-01 through PCC-03 and access road from Colorado Ute

power line to PCC-09 turnoff (see South Lease Exploration Plan - TR04, MR10 and MR11, Volume 8). Phase I Bond Release was approved on 3.0 acres with SL-2 on October 27, 2003. Phase II & III Bond Release was approved on 3.0 acres with SL-8 on November 14, 2015. Located in Section 12 and 13, T11S, R98W, 6th P.M. Reference Exhibit SL-07-021. Area - 3.0 acres.

Date - Spring 1986

Seed Mix - No seed mix information on file.

Phase III Bond Release – 3.0 acres

5. **North Decline** - Portal, water treatment and storage areas reclaimed (see TR14). In the summer of 2000, Ute Water installed a 48" pipeline through the North Decline. The installation re-disturbed approximately 2.4 acres, which was re-seeded in November 2000. In April 2002 a portion of the North Decline was re-disturbed to place topsoil and spoil during installation of the Mine Dewatering System, then re-graded and re-seeded. Also a small area that was showing no growth from the 1992 seeding was reworked and re-seeded. Phase I Bond Release was approved on 17.6 acres with SL-2 on October 27, 2003. The North Decline disturbed areas were treated for infestation of cheatgrass. The treatment was chemical for two consecutive years, year one (2005) with Plateau/Roundup and year two (2006) with Plateau. In February 2007 the area was inter-seeded, via hydro-seeding, with approved seed mix specified in Table 14-14 of the permit. (See attached seed mix tag.) Please note that at the time of purchase Gardner Saltbush was not available, so at the suggestion of DRMS, Palmer Penstemon and Winterfat were increased in the mix that was used. Phase II Bond Release on 17.6 acres and Phase III Bond Release on 12.2 acres were approved with SL-8 on November 14, 2015. Located in the N $\frac{1}{2}$ NE $\frac{1}{4}$, Section 34 and the NW $\frac{1}{4}$ NW $\frac{1}{4}$, Section 35, T10S, R98W, 6th P.M.

Area - 17.6 acres;

2.4 acres re-seed

0.5 acres re-seed

19.0 acres inter-seeded

Date - Fall 1992

November 2000 re-seed

April 2002 re-seed

February 2007 inter-seeded

Seed Mix - "Seed Mix, Table 14-9"

"Seed Mix, Table 14-11" re-seed

"Seed Mix, Table 14-13, Upland Components re-seed

"Seed Mix, Table 14-14" inter-seeded

Phase III Bond Release – 12.2 acres

Pond 7, SAE Sediment traps (sumps) and 18" V-ditch were reclaimed in 2011. Phase I & II Bond Release on 0.9 acres and Phase III Bond Release on 0.4 acres were approved with SL-8 on November 14, 2015. Phase III Bond Release on 0.5 acres were approved with SL-9 on January 3, 2017. Located in the N $\frac{1}{2}$ NE $\frac{1}{4}$, Section 34 and the NW $\frac{1}{4}$ NW $\frac{1}{4}$, Section

35, T10S, R98W, 6th P.M.

Area – 0.9 acres

Date - October, 2011

Seed Mix - "Seed Mix, Table 14-8" Upland Components

Phase III Bond Release – 0.9 acres

Permanent Disturbance - North Decline - The West diversion ditch #1, East diversion ditches #1 & #2, the 12" CMP and the 12" V-ditches, 1.3 acres, are approved as permanent features. Also, access road #2 at the North Decline, 0.4 acres, is approved as a permanent feature. Phase I & II Bond Release on 1.7 acres and Phase III Bond Release on 0.5 acres were approved with SL-8 on November 14, 2015. Located in the N $\frac{1}{2}$ NE $\frac{1}{4}$, Section 34 and the NW $\frac{1}{4}$ NW $\frac{1}{4}$, Section 35, T10S, R98W, 6th P.M.

Area – 1.7 Acres

Phase III Bond Release – 0.5 acres

6. **North Decline** - treatment building, A-substation and power line between A and A-substations. Phase I Bond Release was approved on 0.1 acres with SL-2 on October 27, 2003. Phase II & III Bond Release was approved on 0.1 acres with SL-8 on November 14, 2015. Located in E $\frac{1}{2}$ NE $\frac{1}{4}$ and NE $\frac{1}{4}$ SE $\frac{1}{4}$, Section 34, T10S, R98W, 6th P.M.
Area - 0.1 acres
Date - Spring 1993
Seed Mix - "Seed Mix, Table 14-9"
Phase III Bond Release – 0.1 acres
7. **NW Intake Portal** - Backfill portal located in NW $\frac{1}{4}$ NE $\frac{1}{4}$, Section 34, T10S, R98W, 6th P.M. Phase I Bond Release was approved on 0.1 acres with SL-2 on October 27, 2003. Phase II & III Bond Release was approved on 0.1 acres with SL-8 on November 14, 2015.
Area - 0.1 acres
Date - Summer 1993
Seed Mix - No seed mix information on file.
Phase III Bond Release – 0.1 acres
8. **Cameo Refuse Disposal Area No. 1** - Covered benches 1, 2, & 3. Phase I Bond Release was approved on 10.3 acres with SL-2 on October 27, 2003. Phase II & III Bond Release was approved on 10.3 acres with SL-8 on November 14, 2015. Located in the SE $\frac{1}{4}$ Section 28, T10S, R98W, 6th P.M.
Area - 10.3 acres
Date - July 1994
Seed Mix - "Seed Mix, Table 14-10"
Phase III Bond Release – 10.3 acres
9. **Cameo Refuse Disposal Area No. 2** - Covered benches 1, 2, 3, and the part of 4 south of the road. Inter-seeded previously seeded benches 1, 2, 3 and the part of 4 south of the road per the recommendation of the 2001

vegetation study entitled *Revegetation Evaluation re: Diversity, Cedar Creek Associates, Inc., September 2001*. Phase I Bond Release was approved on 7.5 acres with SL-2 on October 27, 2003. Phase II & III Bond Release was approved on 7.5 acres with SL-8 on November 14, 2015. Located in the SE¼, Section 28 and the SW¼, Section 27, T10S, R98W, 6th P.M.

Area - 7.5 acres

Date - Benches 1 & 2 in July 1994 and benches 3 & 4 in December 1994;
November 2001 inter-seed

Seed Mix - "Seed Mix, Table 14-10"

"Seed Mix, Table 14-12"

Phase III Bond Release – 7.5 acres

10. **Cameo Borrow Area No. 1** - Borrow area east of CRDA 1 which was used for refuse pile cover material. 0.2 acres of Cameo Borrow Area No. 1 was re-disturbed in 2002 and then reclaimed and re-seeded. Phase I Bond Release was approved on 2.5 acres with SL-2 on October 27, 2003. Phase II & III Bond Release was approved on 2.5 acres with SL-8 on November 14, 2015. Located in the SE¼, Section 28, T10S, R98W, 6th P.M.

Area - 2.5 acres

Date - 1.2 acres in July 1994; 1.8 acres in December 1994; (0.2 acres re-seeded in April 2002)

Seed Mix - "Seed Mix, Table 14-10"; (Re-seed "Seed Mix, Table 14-13", Upland Components)

Phase III Bond Release – 2.5 acres

CBA #1 Sump (sedimentation control feature) - backfilled, top-soiled and seeded. Phase I Bond Release was approved on 0.3 acres with SL-8 on November 14, 2015. Phase II & III Bond Release was approved on 0.3 acres with SL-9 on January 3, 2017.

Area – 0.3 acres

Date – October 2012

Seed Mix - "Seed Mix, Table 14-8", Upland Components

Phase III Bond Release – 0.3 acres

11. **Cameo Refuse Disposal Area No. 1 (Misc)** - Topsoil Piles 5 and 6, Salvage Area 3, and the temporary haul road from Cameo Borrow Area No. 2. Phase I Bond Release was approved on 2.2 acres with SL-2 on October 27, 2003. Phase II & III Bond Release was approved on 2.2 acres with SL-8 on November 14, 2015. Located in the SE¼, Section 28, T10S, R98W, 6th P.M.

Area - 2.2 acres

Date - July 1994

Seed Mix - "Seed Mix, Table 14-10"

Phase III Bond Release – 2.2 acres

12. **South Fan** - Overburden stockpiles 10 and 11, south fan borrow area and portion of access road no. 3. Reference map SL-16-009. Phase I Bond

Release was approved on 0.9 acres with SL-2 on October 27, 2003. Phase II & III Bond Release was approved on 0.9 acres with SL-8 on November 14, 2015. Located in the NE $\frac{1}{4}$, Section 2, T11S, R98W, 6th P.M.

Area - 0.9 acres

Date - October 2000

Seed Mix - "Seed Mix, Table 14-6"

Phase III Bond Release – 0.9 acres

13. **2 West Portals** - Portals & Overburden stockpile 13. Reference Exhibit 58. The two steep sloped portal areas were extensively roughened and re-seeded due to poor establishment of vegetation from the 2000 seeding. Phase I Bond Release was approved on 0.3 acres with SL-2 on October 27, 2003. Phase II & III Bond Release was approved on 0.3 acres with SL-8 on November 14, 2015. Located in the NE $\frac{1}{4}$, Section 11, T11S, R98W, 6th P.M.
Area - 0.3 acres
Date - October 2000; (0.2 acres re-seeded in October 2005)
Seed Mix - "Seed Mix, Table 14-6"; (Re-seed "Salt Tolerant Seed Mix, Table 14-15")
Phase III Bond Release – 0.3 acres
14. **North Decline Mine Dewatering System** - Permanent Mine Dewatering Point installed and reclaimed during 2002. Phase I Bond Release was approved on 0.5 acres with SL-2 on October 27, 2003. Phase II & III Bond Release was approved on 0.5 acres with SL-8 on November 14, 2015. Located in E $\frac{1}{2}$ NE $\frac{1}{4}$ and NE $\frac{1}{4}$ SE $\frac{1}{4}$, Section 34, T10S, R98W, 6th P.M.
Area - 0.5 acres
Date - April 2002
Seed Mix - "Seed Mix, Table 14-13", Upland Components
Phase III Bond Release – 0.5 acres
15. **Roadside Refuse Borrow Area** - Area east of the Roadside Refuse Pile excavated during 2002 for cover material for the Roadside Refuse Pile. Phase I Bond Release was approved on 4.5 acres with SL-2 on October 27, 2003. Phase II Bond Release on 4.5 acres and Phase III Bond Release on 3.4 acres were approved with SL-8 on November 14, 2015. Located in SE $\frac{1}{4}$ Section 34, T10S, R98W, 6th P.M.
Area – 4.5 acres
Date - November 2002
Seed Mix - "Seed Mix, Table 14-8", Upland Components
Phase III Bond Release – 3.4 acres
16. **Roadside Refuse Disposal Area (including new Upper Diversion Ditch)** - Re-contoured the refuse pile and placed 20" of cover material and 6" of topsoil on all slopes and benches. Seeded with approved seed mix during November. Phase I Bond Release was approved on 7.1 acres with SL-2 on October 27, 2003, and 1.3 acres with SL-4 on January 11, 2009. The 1.3 acres achieved final Phase II & III Bond Release with SL-6,

approved on Dec. 14, 2010. Phase II & III Bond Release was approved on 7.1 acres with SL-8 on November 14, 2015. Located in the SE¼ Section 34, T10S, R98W, 6th P.M.

Area - 8.4 acres

Date - November 2002

Seed Mix - "Seed Mix, Table 14-8", Upland Components

Phase III Bond Release – 8.4 acres

17. **Roadside South Portal Old Upper Diversion Ditch** - This ditch was removed and restored to approximate original contours during the excavation of the Roadside Refuse Borrow Area. It was permanently seeded with an approved seed mix during November of 2002. Phase I Bond Release was approved on 1.1 acres with SL-2 on October 27, 2003. Phase II & III Bond Release was approved on 1.1 acres with SL-8 on November 14, 2015. Located in the SE¼ Section 34, T10S, R98W, 6th P.M.
- Area - 1.1 acres
- Date - November 2002
- Seed Mix - "Seed Mix, Table 14-8", Upland Components
- Phase III Bond Release – 1.1 acres
18. **Cameo Refuse Disposal Area No. 1** - Re-contoured upper bench, regraded the top of the pile, covered all slopes, benches and the top of the pile with 24 inches of material. Established collection ditches and rip-rapped the ditches in accordance with the reclamation plan. This pile was seeded during April 2002. Phase I Bond Release was approved on 14.8 acres with SL-2 on October 27, 2003. Approximately one (1) acre was re-disturbed in December 2009 on top of CRDA #1 as a lay down area for coal refuse delivered from McClane Canyon Mine and remaining SCC coal fines clean up. The one acre of re-disturbance was reclaimed and reseeded in September 2010. Phase II & III Bond Release was approved on 13.8 acres with SL-8 on November 14, 2015. Phase II Bond Release was approved on 1.0 acre with SL-9 on January 3, 2017. Postmining Land Use was changed to Commercial on 1.0 acre with PR-6 on January 3, 2017. Phase III Bond Release was approved on 1.0 acres with SL-10 on August 29, 2017. Located in the SE¼, Section 28, T10S, R98W, 6th P.M.
- Area - 14.8 acres; 1 acre (reseed)
- Date - April 2002; September 2010 (reseed)
- Seed Mix - "Seed Mix, Table 14-13", Upland Components
"Seed Mix, Table 14-8", Upland Components (reseed)
- Phase III Bond Release – 14.8 acres
19. **Cameo Refuse Disposal Area No. 2** - The final reclamation of this refuse pile included covering and top soiling the upper benches and the top of the pile. Also a new diversion ditch was constructed just above the pile. The Old Upper diversion ditch was reclaimed and restored to approximate original contours and then reseeded. Phase I Bond Release was approved on 20.2 acres with SL-2 on October 27, 2003. Phase II & III

Bond Release was approved on 20.2 acres with SL-8 on November 14, 2015. Located in the SE $\frac{1}{4}$, Section 28 and the SW $\frac{1}{4}$, Section 27, T10S, R98W, 6th P.M.

Area - 20.2 acres

Date - April 2002 for CRDA2 and November 2002 for Upper Diversion

Seed Mix - For CRDA2 - "Seed Mix, Table 14-13", Upland Components

Seed Mix - For Upper Diversion - "Seed Mix, Table 14-8", Upland Components

Phase III Bond Release – 20.2 acres

20. **Cameo Borrow Area No. 2** - Material was excavated from CBA2 for the covering of the CRDA1. Approximately 5.1 acres were seeded in April 2002, however a further disturbance will be needed here with the removal of Pond 11. Approximately 0.6 acres were re-disturbed and re-seeded during the reclamation of Pond 11. Phase I Bond Release was approved on 2.7 acres with SL-2 on October 27, 2003. Phase II & III Bond Release was approved on 2.1 acres with SL-8 on November 14, 2015. Phase II & III Bond Release was approved on 0.6 acres with SL-9 on January 3, 2017. Located in the SE $\frac{1}{4}$, Section 28, T10S, R98W, 6th P.M.

Area - 2.7 acres

0.6 acres (re-disturbed)

Date - April 2002

Seed Mix - "Seed Mix, Table 14-13", Upland Components

Phase III Bond Release – 2.7 acres

Pond 11 – The pond was filled, regraded, top-soiled and seeded. Phase I Bond Release was approved on 1.2 acres with SL-8 on November 14, 2015. This area was covered with mud during a flash flood in July 2015. The area was re-tilled, re-seeded and mulched in November 2015. Phase II Bond Release was approved on 1.2 acres with SL-9 on January 3, 2017. Postmining Land Use was changed to Commercial with PR-6 on January 3, 2017. Phase III Bond Release was approved on 1.2 acres with SL-10 on August 29, 2017.

Area – 1.2 acres

Date – October 2012, Reseed November 2015

Seed Mix – "Seed Mix, Table 14-8", Upland Components

Phase III Bond Release – 1.2 acres

Permanent Disturbance - Coal Gulch Realignment - The acres associated with the realignment of Coal Gulch, 1.4 acres, were approved as permanent features on August 12, 2012 with PR-5. Phase I, II & III Bond Release was approved on 1.4 acres with SL-8 on November 14, 2015. Located in the N $\frac{1}{2}$ NE $\frac{1}{4}$, Section 34 and the NW $\frac{1}{4}$ NW $\frac{1}{4}$, Section 35, T10S, R98W, 6th P.M.

Area – 1.4 Acres

Phase III Bond Release – 1.4 acres

21. **Permanent Disturbance - Access Road and Power lines to No. 2 West Portals** - By agreement with the Bureau of Land Management, the access

road was left in place and is considered a permanent disturbance. The power line reclamation was finished during 2002. Phase I, II & III Bond Release was approved on 3.8 acres with SL-8 on November 14, 2015.

Area - 3.8 acres

Date - July 2002

Seed Mix - No backfilling or seeding required

Phase III Bond Release – 3.8 acres

22. **Roadside North Portal Mine Facilities and Stockpile Area** – During 2002 all structures, materials and facilities were removed. The portal decline was filled and the area was returned to approximate original contours and then reseeded. In August 2003 approximately 0.1 acres along the north bank of Coal Creek was re-seeded after it was re-disturbed creating access for equipment while building the rock check structure in Coal Creek. Phase I Bond Release was approved on 24.1 acres with SL-2 on October 27, 2003. In December 2005 the northwest section of the North Portal, approximately 3.8 acres, was re-seeded due to poor establishment of vegetation from the 2002 seeding. In October 2012 approximately 3.0 acres were re-disturbed and re-seeded during reclamation of the North Portal sedimentation control features. Material from Topsoil Pile #1 was used at Pond 13, flume area, CBA #1, Ponds 6 & 10 and portions of Pond 11 and the top soil pile area was graded and seeded. Phase II & III Bond Release was approved on 21.1 acres with SL-8 on November 14, 2015. Phase II Bond Release was approved on 0.1 acres and Phase II & III Bond Release was approved on 2.9 acres with SL-9 on January 3, 2017. (Please Note: The 0.1 acres still awaiting Phase III release has been incorporated into the “G” Substation area, changing that acreage from 0.5 to 0.6 acres). Located in the SW¼ Section 27, T10S, R98W, 6th P.M.
- Area - 24.1 acres;
0.1 acres re-seed;
3.8 acres re-seed;
3.0 acres re-seed
- Date - November 2002;
August 2003 re-seed;
December 2005 re-seed;
October 2012 re-seed
- Seed Mix - “Seed Mix, Table 14-8”, Upland Components;
“Seed Mix, Table 14-8”, Upland Components – re-seed;
“Salt Tolerant Seed Mix, Table 14-15” – re-seed;
“Seed Mix, Table 14-8”, Upland Components – re-seed
- Phase III Bond Release – 24.0 acres

“G” Substation - All structures at the G Substation were removed and area was returned to approximate original contours and seeded. Phase I Bond Release was approved on 0.5 acres with SL-8 on November 14, 2015. (Please Note: The 0.1 acres still awaiting Phase III release above has been incorporated into the “G” Substation area, changing this acreage from 0.5 to 0.6 acres). Phase II Bond Release was approved on 0.6 acres

with SL-9 on January 3, 2017. Postmining Land Use was changed to Commercial with PR-6 on January 3, 2017. Phase III Release was approved on 0.6 acres with SL-10 on August 29, 2017.

Area - 0.5 acres

Date - September 2008

Seed Mix - "Seed Mix, Table 14-8", Upland Components (Needle and Thread was not available, so Indian Rice Grass was increased by 1 lb/acre, which was approved by Dan Mathews)

Phase III Bond Release – 0.6 acres

North Portal Sedimentation Control Features - Pond 13, portion of the old upper diversion ditch and the flume area at the end of the upper diversion ditch were filled, regraded and seeded. Phase I Bond Release was approved on 2.0 acres with SL-8 on November 14, 2015. Phase II & III Bond Release was approved on 2.0 acres with SL-9 on January 3, 2017.

Area – 2.0 acres

Date – October 2012

Seed Mix – "Seed Mix, Table 14-8", Upland Components

Phase III Bond Release – 2.0 acres

Permanent Disturbance – North Portal - Portions of the Upper Diversion Ditch, 1.4 acres, and the remnants of Top Soil Pile #2, 0.3 acres, were approved as permanent features on August 12, 2012 with PR-5. Phase I, II & III Bond Release was approved on 1.7 acres with SL-8 on November 14, 2015.

Area – 1.7 Acres

Phase III Bond Release – 1.7 acres

23. **Substation B** - Superstructures, fences, slabs and components removed during 2002. Graded to approximate original contours and seeded. Phase I Bond Release was approved on 0.3 acres with SL-2 on October 27, 2003. Phase II Bond Release was approved on 0.3 acres with SL-8 on November 14, 2015. Located in the SW $\frac{1}{4}$ Section 35, T10S, R98W, 6th P.M.

Area - 0.3 acres

Date - November 2002

Seed Mix - "Seed Mix, Table 14-8", Upland Components

24. **2 West Portals** - Substation of portal area-Reference Exhibit 58. Phase I Bond Release was approved on 0.7 acres with SL-2 on October 27, 2003. Phase II & III Bond Release was approved on 0.7 acres with SL-8 on November 14, 2015. Located in the NE $\frac{1}{4}$, Section 11, T11S, R98W, 6th P.M.

Area - 0.7 acres

Date - December 2001

Seed Mix - "Seed Mix, Table 14-6"

Phase III Bond Release – 0.7 acres

25. **Cameo Refuse Disposal Area Topsoil Piles** - These piles were used for top soiling the CRDA2 during final reclamation activities. Phase I Bond Release was approved on 2.9 acres with SL-2 on October 27, 2003. Phase II & III Bond Release was approved on 2.9 acres with SL-8 on November 14, 2015. Located in the SE $\frac{1}{4}$, Section 28, T10S, R98W, 6th P.M.
Area - 2.9 acres
Date - April 2002
Seed Mix - "Seed Mix, Table 14-13", Upland Components
Phase III Bond Release – 2.9 acres
26. **Conveyor Corridor** - The conveyor corridor, from the Xcel culvert north to Haul Road #3 was graded to approximate original contours and re-seeded. Phase I Bond Release was approved on 2.2 acres with SL-2 on October 27, 2003 and on 0.5 acres with SL-5 on November 5, 2009. The 0.5 acres achieved final Phase II & III Bond Release with SL-5, approved on November 5, 2009 and the 2.2 acres achieved final Phase II & III Bond Release with SL-7, approved on April 26, 2011. Located in SE $\frac{1}{4}$, Section 27 and NW $\frac{1}{4}$, Section 34, T10S, R98W, 6th P.M.
Area - 2.7 acres
Date - July 2003
Seed Mix - "Seed Mix, Table 14-8", Lowland Components
Phase III Bond Release - 2.7 acres
27. **Conveyor Corridor** - The conveyor corridor, from the Xcel culvert south to Transfer Building #2 and east of Colorado River where conveyor tube crossed river was graded to approximate original contours and seeded. Phase I Bond Release was approved on 0.6 acres with SL-4 on January 11, 2009 and on 1.0 acres with SL-5 on November 5, 2009. A total of 1.3 acres in this area achieved final Phase II & III Bond Release with SL-5 on November 5, 2009. Located in SE $\frac{1}{4}$, Section 27 and NW $\frac{1}{4}$, Section 34, T10S, R98W, 6th P.M.
Area - 1.6 acres
Date - March 2004
Seed Mix - "Seed Mix, Table 14-8", Lowland Components
Phase III Bond Release - 1.3 acres
28. **Substation A** - Superstructures, fences, slabs and components removed during 2007. Graded to approximate original contours and seeded. Phase I Bond Release was approved on 0.2 acres with SL-4 on January 11, 2009. Located in the SE $\frac{1}{4}$ Section 34, T10S, R98W, 6th P.M.
Area - 0.2 acres
Date - August 2007
Seed Mix - "Seed Mix, Table 14-8", Upland Components
29. **Roadside South Portal Mine Facilities and Stockpile/Prep Plant Area and Conveyor Tunnel Under I-70** - The Roadside South Portal Mine Facilities, Stockpile and Prep Plant areas where reclaimed as per approved Permit Revision #3 (PR-3). 13.5 acres were reclaimed during

the last two quarters of 2007. These acres include all back filled and graded areas along with buildings and asphalt areas that were approved for retention through PR-3. The east end of the Conveyor Tunnel was backfilled and filled with a 2 foot concrete plug. Due to inclement weather and frozen soils, seeding was postponed until the 1st quarter of 2008. Phase I Bond Release was approved on 13.5 acres with SL-4 on January 11, 2009. These 13.5 acres achieved final Phase II & III Bond Release with SL-6 on December 14, 2010. Located in the SW $\frac{1}{4}$ & SE $\frac{1}{4}$ Section 34, T10S, R98W, 6th P.M.

Area - 13.5 acres reclaimed

(9.6 acres backfilled and graded)

(6.4 acres top soiled)

Date - December 2007

Seed Mix - "Seed Mix, Table 14-8", Upland Components

Phase III Bond Release - 13.5 acres

Pond 8 and surrounding area was backfilled, graded to final contours and seeded in 2011. Phase I Bond Release was approved on 0.5 acres with SL-8 on November 14, 2015. Phase II & III Bond Release was approved on 0.5 acres with SL-9 on January 3, 2017. Located in the SW $\frac{1}{4}$ & SE $\frac{1}{4}$ Section 34, T10S, R98W, 6th P.M.

Area - 0.5 acres

Date - October 2011, October 2014 (re-seeded)

Seed Mix - "Seed Mix, Table 14-8", Upland Components - 2011

"Salt Tolerant Seed Mix, Table 14-15" – 2014

Phase III Bond Release - 0.5 acres

Pond 9 was backfilled, graded to final contours and seeded in 2013. Phase I Bond Release was approved on 0.4 acres with SL-8 on November 14, 2015. Phase II & III Bond Release was approved on 0.4 acres with SL-9 on January 3, 2017. Located in the SW $\frac{1}{4}$ Section 34, T10S, R98W, 6th P.M.

Area - 0.4 acres

Date - April 2013

Seed Mix - "Seed Mix, Table 14-8", Upland Components

Phase III Bond Release - 0.4 acres

30. **Roadside South Portal Road to Old Upper Diversion Ditch and Water Tank (Light Use Road #1)** - Portions of Light Use Road #1, as approved by PR-3, was graded to approximate original contours and seeded.

Phase I Bond Release was approved on 1.9 acres with SL-4 on January 11, 2009. Located in SE $\frac{1}{4}$ Section 34, T10S, R98W, 6th P.M.

Area - 1.9 acres

Date - September 2007

Seed Mix - "Seed Mix, Table 14-8", Upland Components

31. **Railroad Loop Track (South of I 9/10 Road)** - The Railroad Loop Track that lies south of I 9/10 Road was removed, regraded, backfilled and seeded. This 0.3 acre area was part of the 2.1 acres that achieved final

Phase I, II & III Bond Release with SL-5, approved on November 5, 2009. Located in the NW¼ Section 34, T10S, R98W, 6th P.M.

Area - 0.3 acres

Date - January 2009

Seed Mix - "Seed Mix, Table 14-8", Lowland Components

Phase III Bond Release - 0.3 acres

32. **Cameo Refuse Disposal Area No. 1 (Road)** - The "access" road (1.2 acres) to Cameo Refuse Disposal Area No. 1 that had been left open for coal fines clean up was regraded and backfilled to approved final contours and seeded. Phase I Bond Release was approved on 1.2 acres with SL-8 on November 14, 2015. Phase II Bond Release was approved on 1.2 acres with SL-9 on January 3, 2017. Postmining Land Use was changed to Commercial with PR-6 on January 3, 2017. Phase III Release was approved on 1.2 acres with SL-10 on August 29, 2017. Located in the SE¼ Section 28, T10S, R98W, 6th P.M.

Area - 1.2 Acres

Date - September 2010

Seed Mix - "Seed Mix, Table 14-8", Upland Components

Phase III Bond Release – 1.2 acres

33. **Unit Train Load-out and Railroad Loop Track/Conveyor Corridor** - Portions of the Unit Train Load-out and Railroad Loop Track/Conveyor Corridor where reclaimed as per approved Permit Revision #4 (PR-4). 38.1 acres were backfilled and graded during 2010. 0.9 acres, which includes reclaimed Ponds 1 and 2, footprint of Topsoil Pile #4, and small area where coal fines were removed, was seeded. Phase I, II & III Bond Release was approved on 66.7 acres with SL-7 on April 26, 2011. Located in Sections 26, 27 & 34 T10S, R98W, 6th P.M.

Area - 38.1 acres reclaimed, 0.9 acres seeded

Date - June & September 2010

Seed Mix - "Seed Mix, Table 14-8", Lowland Components

Phase III Bond Release - 66.7 acres

Permanent Disturbance – Haul Road #3 - Haul Road #3, 0.9 acres, was approved as a permanent feature. Phase I, II & III Bond Release was approved on 0.9 acres with SL-7 on April 26, 2011.

Area – 0.9 Acres

Phase III Bond Release – 0.9 acres

34. **Cameo Refuse Disposal Area No. 1 & 2 Sediment Ponds (6 & 10)** – Sediment Ponds 6 and 10 were filled, graded, top soiled and seeded. Phase I Bond Release was approved on 2.4 acres with SL-8 on November 14, 2015. Phase II & III Bond Release was approved on 2.4 acres with SL-9 on January 3, 2017. Located in the SE¼, Section 28, T10S, R98W, 6th P.M.

Area – 2.4 acres

Date – October 2012

Seed Mix - "Seed Mix, Table 14-8", Upland Components

Phase III Bond Release – 2.4 acres

Permanent Disturbance – Coal Creek Realignment - The disturbed acres associated with the previously approved realignment of Coal Creek, 0.8 acres, were approved as permanent features on August 12, 2012 with PR-5. Phase I, II & III Bond Release was approved on 0.8 acres with SL-8 on November 14, 2015.

Area – 0.8 Acres

Phase III Bond Release – 0.8 acres

35. **Permanent Disturbance - Haul Roads to CRDA 1, 2 & 3** - By agreement with the Bureau of Land Management and Xcel Energy, these roads were left in place and are considered permanent disturbances. Phase I, II & III Bond Release was approved on 3.4 acres with SL-8 on November 14, 2015.

Area - 3.4 acres

Phase III Bond Release - 3.4 acres

2. **Vegetation Studies** – Field work for vegetation study was performed by Cedar Creek Associates on June 19 and 20, 2017.

Sampling was conducted, as one “unit”, on areas that had been reclaimed and seeded in 2007 or earlier in order for “Year 10” evaluation to be performed. The Revegetation Evaluation Report has not yet been received by Snowcap, but will be sent to DRMS under separate cover upon receipt.

Granite Seed - Denver
From: 490 East 76th Ave., Unit A
Denver, CO 80229

3 of 4

Mix Name Upland Native

3-27181

Mix # 171833

14-8 Upland Native Mix

% Pure	Common Name	Variety	G + D or H	Origin
25.89	SALTBUSH, SHADSCALE	VNS	63 -TZ	UT
11.10	WINTERFAT	VNS	98 -TZ	NM
6.32	GREASEWOOD	Lewinged	86 -TZ	UT
6.04	THICKSPIKE WHEATGRASS	Bannock	80 + 10 = 90	WA
5.91	JAMES' GALLETA	Viva	92 + 0 = 92	TX
5.72	INDIAN RICEGRASS	Nezpar	95 -TZ	WA
5.66	BLUEBUNCH, WHEATGRASS	Secar	96 -TZ	WA
3.78	NEEDLE & THREAD GRASS	VNS	72 -TZ	UT
2.92	WESTERN WHEATGRASS	Amiba	93 + 0 = 93	WA
2.89	SLENDER WHEATGRASS	San Luis	93 + 1 = 94	CAN
2.86	WILD RYE, GREAT BASIN	Magnar	95 + 0 = 95	MT
2.43	SALTBUSH, FOURRING	VNS	66 -TZ	NM
1.90	GLOBEMALLOW, SCARLET	VNS	86 -TZ	UT
1.89	KOCHIA, FORAGE	VNS	72 -TZ	NV
1.53	PENSTEMON, PALMER	VNS	24 + 65 = 89	UT
1.43	BOTTLEBRUSH SQUIRRELTAIL	Pueblo	88 + 7 = 95	CO
1.40	MEXICAN PRIMROSE	VNS	96 + 1 = 97	CA
0.57	ALKALI SACATON	VNS	32 + 64 = 96	NM

0.05 Other Crop

Date Tested: 11-Aug-15

9.67 Inert Matter

Hard Seed: 0.00

0.05 Weed Seed

Noxious Weed: NONE FOUND

Net Weight: 6.83 Lbs PLS

9.20 Lbs Bulk

Coverage: 0.500 Acre

NOTICE TO BUYER LIMITATIONS OF WARRANTIES AND REMEDIES

Crop yield and quality are dependent upon many factors beyond the control of the labeled seller and NO WARRANTY is made for crop yield and quality. The labeled seller warrants that all seed sold has been labeled as required under applicable state and federal seed law and that the seed conforms to the label description, within recognized tolerances. THIS WARRANTY IS IN LIEU OF ALL OTHER WARRANTIES, EXPRESS OR IMPLIED, INCLUDING WARRANTIES OF MERCHANTABILITY AND FITNESS FOR A PARTICULAR PURPOSE. THERE ARE NO WARRANTIES WHICH EXTEND BEYOND THE DESCRIPTION ON THE LABEL.

No claim shall be asserted against the labeled seller unless Buyer reports to the labeled seller within a reasonable period after discovery (not to exceed thirty days), any condition that might lead to a complaint. BUYER'S EXCLUSIVE REMEDY FOR ANY CLAIM OR LOSS RESULTING FROM BREACH OF WARRANTY, BREACH OF CONTRACT OR NEGLIGENCE (INCLUDING BUT NOT LIMITED TO INCIDENTAL OR CONSEQUENTIAL DAMAGES) SHALL BE LIMITED TO REPAYMENT OF THE PURCHASE PRICE.

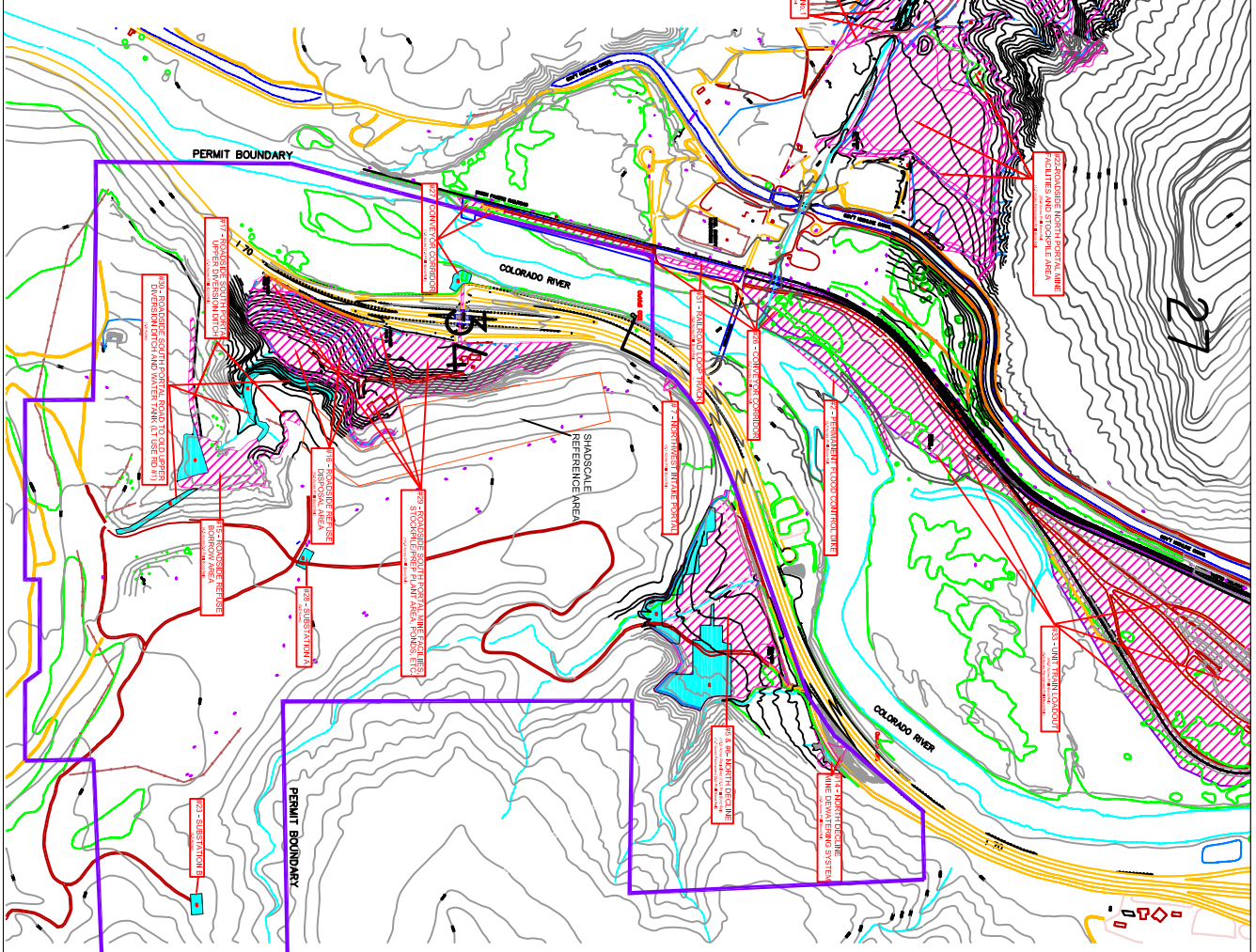
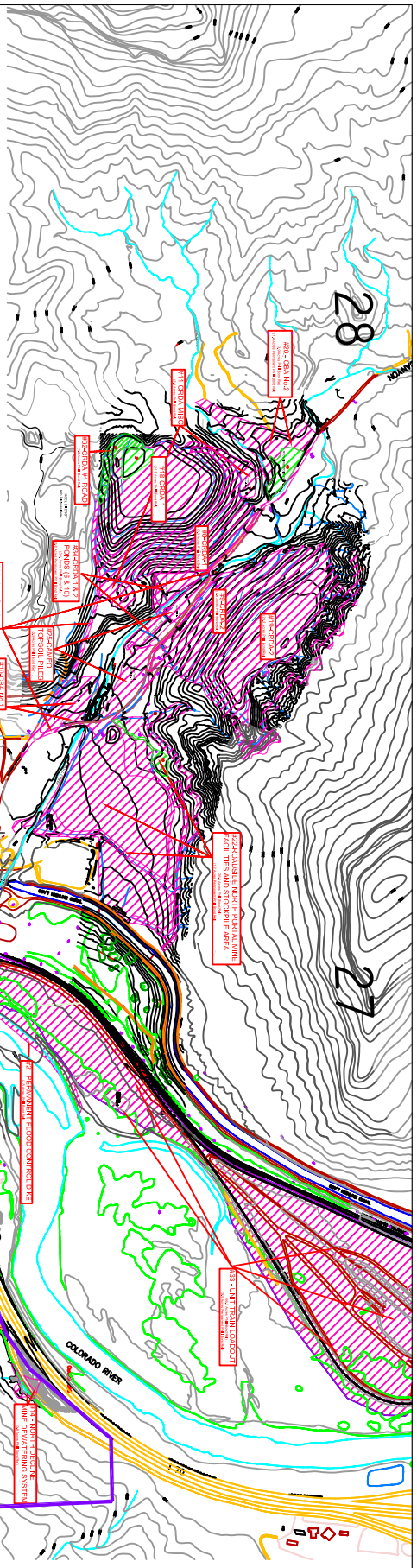
By acceptance of the seed, Buyer agrees the terms and conditions stated above are a benefit to the bargain and constitute the entire agreement between Buyer and the labeled seller. Buyer shall return the original unopened seed package to the labeled seller within twenty days of receipt for a refund of the purchase price if not accepted under these terms.

NOTICE: REQUIRED ARBITRATION / CONCILIATION / MEDIATION

The seed laws of several states including Arkansas, California, Colorado, Florida, Georgia, Idaho, Illinois, Indiana, Minnesota, Mississippi, Montana, North Dakota, South Carolina (Section 46-21-260), South Dakota, Texas and Washington require arbitration, conciliation or mediation of disputes involving alleged defective seed before certain legal actions may be maintained against a seller. North Carolina offers an alternative to court action that allows claims to be investigated and heard before the Special Seed Board. A complaint (sworn for AR, CO, FL, IL, IN, MN, MS, MT, NC, SC, TX, WA; signed only, CA, GA, ID, ND, SD) must be filed with the Department of Agriculture or Seed Commissioner (IN) or State Plant Board (AR) or Commissioner of Agriculture (NC) within such time to permit an inspection of seed, crops or plants (by an Arbitration Committee - AR, ID, MS, SC). In NC, failure to follow this procedure will limit the amount of damages recoverable. Certified copy of complaint must be sent by registered mail to the labeled seller as provided in individual state law. Information about these requirements may be obtained from the state Department of Agriculture.

Snowcap Seed Co.
2352 North 7th Street
Unit B
Grand Junction, CO 81501

Seed



2016-2017		2017-2018		2018-2019		2019-2020		2020-2021	
Year	Month	Year	Month	Year	Month	Year	Month	Year	Month
2016	Jan	2017	Jan	2018	Jan	2019	Jan	2020	Jan
2016	Feb	2017	Feb	2018	Feb	2019	Feb	2020	Feb
2016	Mar	2017	Mar	2018	Mar	2019	Mar	2020	Mar
2016	Apr	2017	Apr	2018	Apr	2019	Apr	2020	Apr
2016	May	2017	May	2018	May	2019	May	2020	May
2016	Jun	2017	Jun	2018	Jun	2019	Jun	2020	Jun
2016	Jul	2017	Jul	2018	Jul	2019	Jul	2020	Jul
2016	Aug	2017	Aug	2018	Aug	2019	Aug	2020	Aug
2016	Sep	2017	Sep	2018	Sep	2019	Sep	2020	Sep
2016	Oct	2017	Oct	2018	Oct	2019	Oct	2020	Oct
2016	Nov	2017	Nov	2018	Nov	2019	Nov	2020	Nov
2016	Dec	2017	Dec	2018	Dec	2019	Dec	2020	Dec