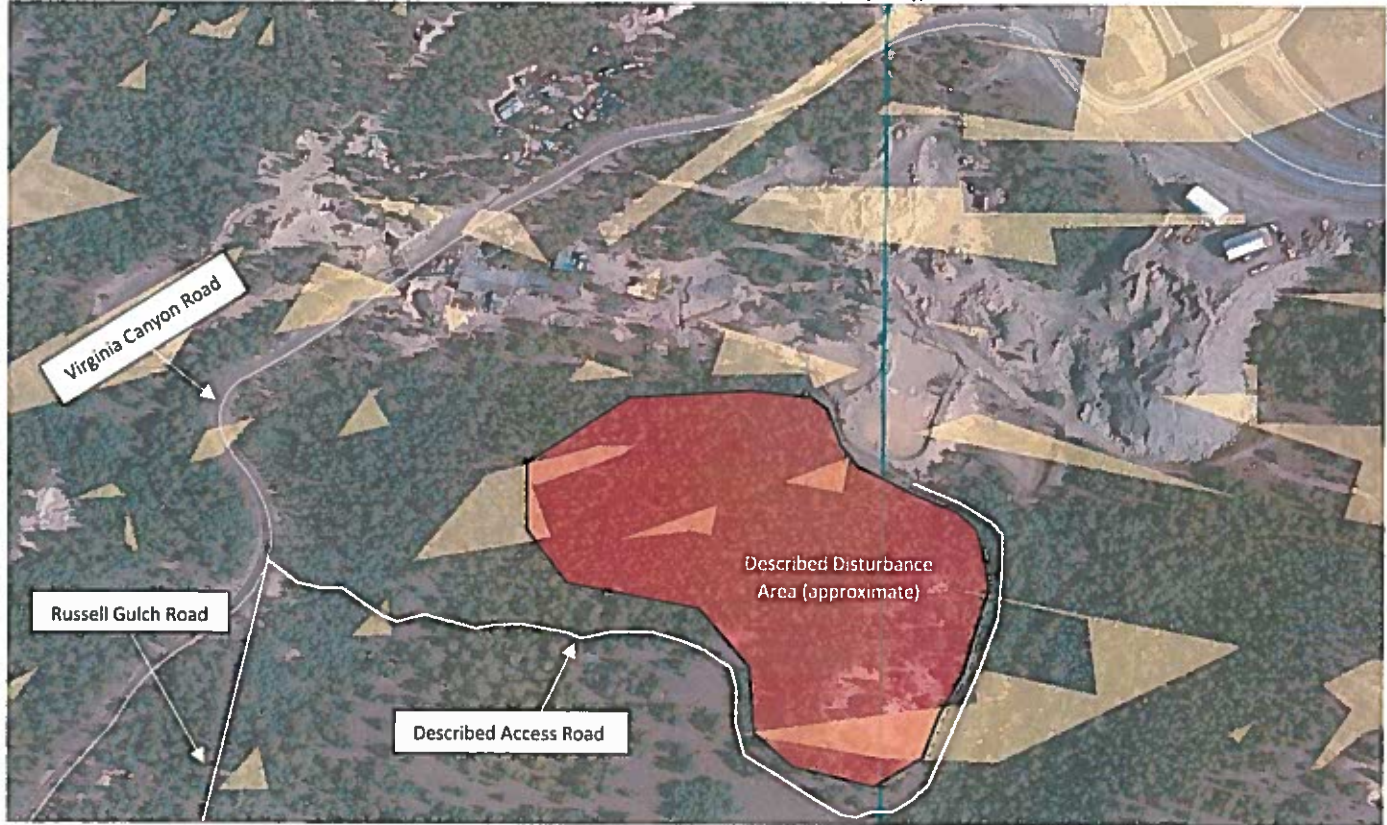


Potential Mineral Trespass/Noncompliance in Gilpin County

Location: T. 3 S., R. 73 W., sections 13 and 14

Map: Showing BLM managed lands (yellow), the described disturbed area (red), and the described access road.



Description: On 06/14/2017 around 4:15 p.m., BLM RGFO received a call from a Central City resident expressing their concern for newly initiated mining activities off of Russell Gulch Road. The resident described the operations as consisting of three men, and clarified that they did not think the men were associated with the nearby True Blue operations. The resident was suspicious of their activities because they had not been notified of any proposed operations, nor had they heard of any new mining submittals from the local newspaper or government. The resident suggested that the operations were similar to hard rock mining for mineral materials, and stated that the men were removing trees in order to conduct their operations. The resident also stated that the men were removing boulders from the nearby retention dams established by the EPA. The resident added that the operations seemed suspicious because their haul truck had been using an unmarked dirt road to access the site at odd hours, instead of using the existing road across the True Blue operation.