



PITCH RECLAMATION PROJECT

June 12, 2017

Mr. Dustin Czapla
Environment Protection Specialist
Colorado Division of Reclamation, Mining and Safety
101 South 3rd, Suite 301
Grand Junction, Colorado 81501
Phone: (970) 243-6299
dustin.czapla@state.co.us

RE: Pitch Reclamation Project Colorado Division of Reclamation, Mining and Safety Reclamation Permit M-77-004HR Technical Revision #8 Addendum

Dear Mr. Czapla:

Homestake Mining Company of California (HMC) hereby provides additional information to support the Division of Reclamation, Mining and Safety Technical Revision #8 (TR8) for the Pitch Reclamation Project.

- Exploration Borehole Conversion to a Monitoring Well
 - The TR application included drilling and immediate abandonment of the 10500/Erie Drift exploration borehole adjacent to the proposed P-13 well. Upon further consideration, HMC proposes converting the borehole to a monitoring well, which will be added to the injection/recirculation network, increasing the total number of wells by one.
 - Converting the borehole to a monitoring well will not result in additional ground disturbance beyond what was included in the TR8 application.
 - When warranted, the well will be abandoned in accordance with Rule 16 of the Colorado Water Well Construction Rules and the area will be reclaimed as detailed in the TR application for other disturbances.
- P-14 and P-15 Well Location Drill Pads
 - Due to the narrow access road, HMC proposes to temporarily backfill the rip rap lined East Wall Drainage channel along the south wall of the North Pit Lake at the P-14 and P-15 well locations to construct pads for safe drilling. If needed to construct the pads, temporary removal of the larger rip rap may also occur. The need for more extensive drill pads is illustrated in Photograph 1.
 - A total of 0.05 acres of potential temporary disturbance will be associated with two approximately 100-feet x 10-feet backfilled portions of the channel. This acreage was included in the TR8 application.
 - Storm water will be temporarily diverted around the drill pads.

- The channel will be restored by the end of the 2017 field season.
- North Pit Lake Drawdown
 - HMC proposes to reduce the water level in the North Pit Lake to the base of the valve (8 feet or less of drawdown) to support the 2017 source control/treatability activities. The drawdown of up to 8 feet would occur slowly over approximately 1 month (3 inches per day) and would be well within the Colorado Discharge Permit System discharge permit water quality and flow conditions.
- Indian Rock Dump Inclinometers
 - HMC proposes to install three inclinometers in the Indian Rock Dump to monitor slope stability (Figure 1). The inclinometers will be installed at the approximate 10200 level (adjacent to an existing drainage channel), at depths of approximately 15, 90 and 45 ft below ground surface (ft bgs), from west to east.
 - Minimal surface disturbance is anticipated. When warranted, the area will be reclaimed as detailed in the TR8 application.
- South Mine Area Borehole
 - HMC plans to install a 3-inch borehole in the South Mine area to help understand the additional slope displacement on the east wall (Figure 2). The borehole will be drilled to approximately 30 ft bgs.
 - The exploration borehole will be plugged/abandoned and reclaimed immediately following drilling.

If you have any questions or require further information regarding this submittal, please contact me at (970) 641-4541.

Sincerely,



Dale Davis
Homestake Mining Company of California
Pitch Site Manager

CC: Russ Means – DRMS
Holton Burns – Homestake Mining Company-Toronto, Canada
Phillip DeDycker – Arcadis, U.S., Inc.



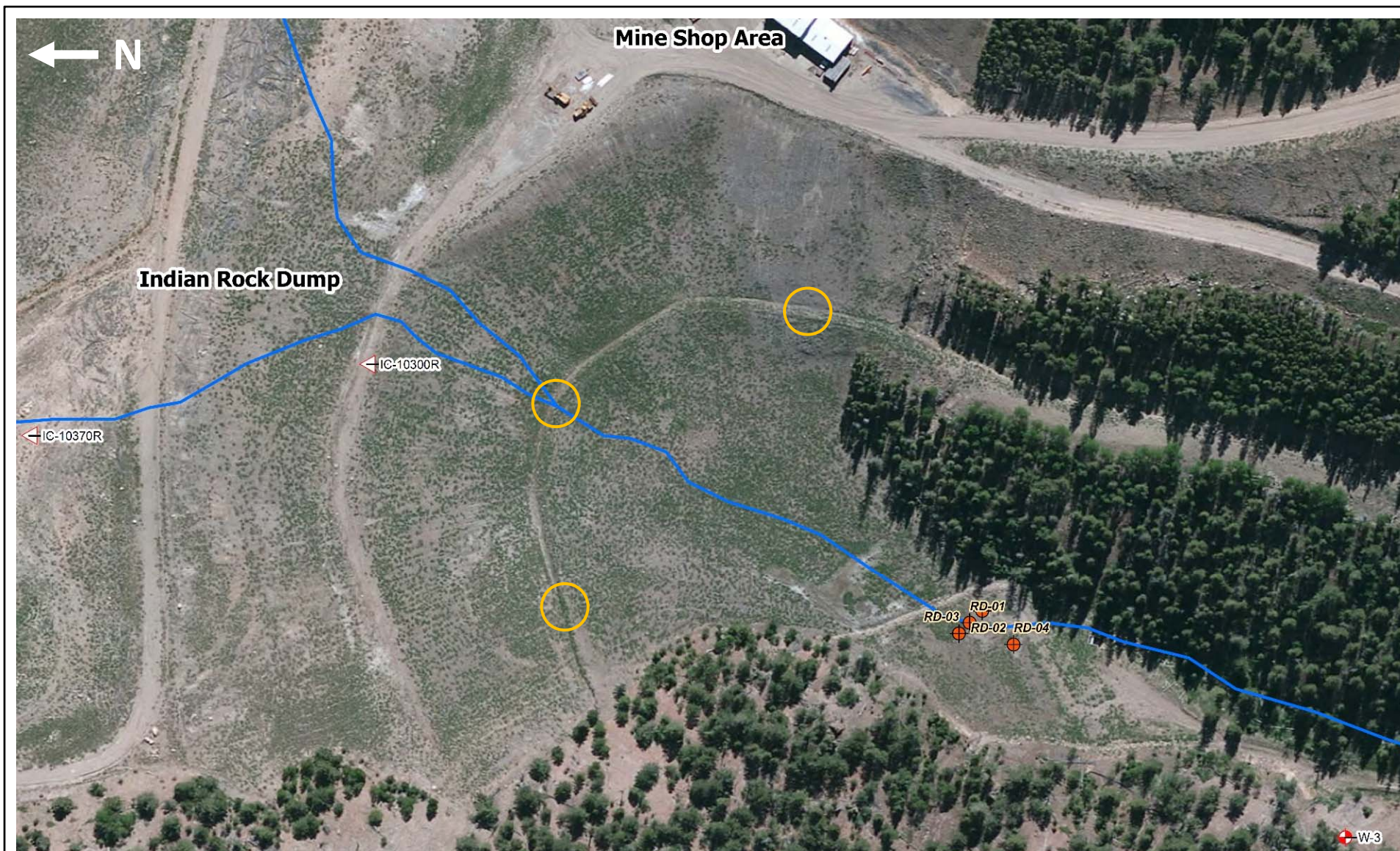
Notes:
Looking west from Inclinator 198-2 toward P-14 and P-15 locations
Photo taken 8/11/2016, afternoon

PITCH RECLAMATION PROJECT
HOMESTAKE MINING COMPANY
SARGENTS, CO

P-14 AND P-15 DRILL PAD ACCESS

 **ARCADIS**

PHOTO
1



Notes:

○ Approximate inclinometer locations

PITCH RECLAMATION PROJECT
HOMESTAKE MINING COMPANY
SARGENTS, CO

APPROXIMATE INCLINOMETER LOCATIONS


 **ARCADIS**

FIGURE

1



Notes:

 Approximate borehole location

PITCH RECLAMATION PROJECT
HOMESTAKE MINING COMPANY
SARGENTS, CO

APPROXIMATE BOREHOLE LOCATION

 **ARCADIS**

FIGURE
2