



October 28, 2016

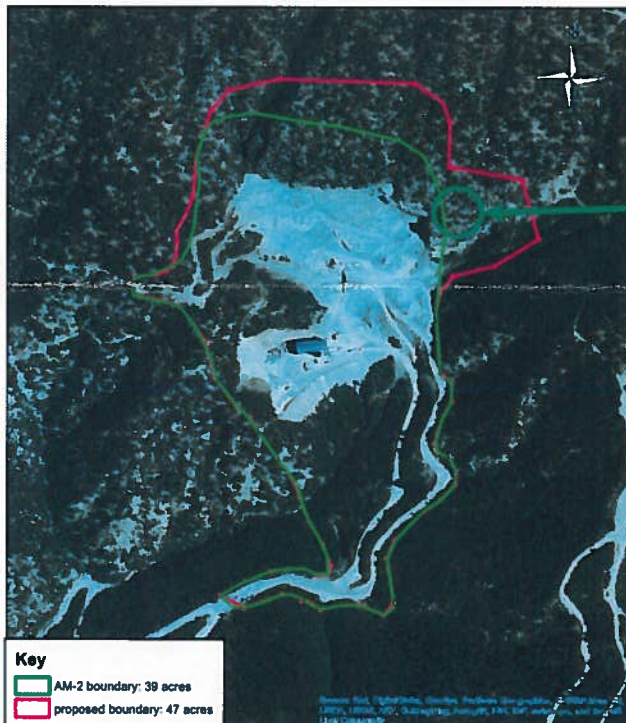
Amy Yeldell
Colorado Division of Reclamation, Mining & Safety ("DRMS")
101 S. 3rd St., Suite 301
Grand Junction, CO 81501

RE: Mid-Continent LST, Permit No. M-1982-121, Approved Acreage and Map Boundaries

Dear Ms. Yeldell,

On October 12, 2016, RMR Aggregates Inc. (dba Rocky Mountain Resources) acquired substantially all of the assets of CalX Minerals, LLC pertaining to the Mid-Continent Limestone Quarry in Glenwood Springs, Colorado. During the closing process of this acquisition, certain permitting due diligence efforts highlighted some areas of improvement of the operations.

A letter from the DRMS in conjunction with the Bureau of Land Management ("BLM") Colorado River Valley Field Office, dated May 2, 2016, identified a potential boundary mapping issue between a previously contemplated plan of operations and the approved plan of operations. As the new operator of the operation, we do our best to remedy all regulatory and permitting issues in a deliberate and thoughtful manner. It is our understanding, after an initial review of the issue, that there is not an error of mapping but rather an instance of a previous owner operating outside of the permitted boundary.



RMR believes the actual area of disturbance is estimated to be approximately 50-75 feet from permitted boundary.

RECEIVED

NOV 01 2016

GRAND JUNCTION FIELD OFFICE
DIVISION OF
RECLAMATION MINING & SAFETY



We openly acknowledge this boundary issue and have verbally communicated the findings to the BLM and DRMS. We believe this area has not been mined but has been technically disturbed. It is our understanding there were previous efforts years ago to begin building an access point to a higher bench but was not completed. As we highlighted in the above map, we believe the area in question extends at most 50 to 75 feet east of the permitted boundary. In verbal accord with the BLM, we have ordered all passage and/or operations outside the boundary area to cease immediately.

Our plan as an organization is to complete our business planning process in 2017 and deliver a more comprehensive permitting overhaul to include a new plan of operations.

If there are any additional requirements needed to resolve this matter, please feel free to contact me directly by phone or via email at the contact information below.

Sincerely,

Gregory Dangler

President

RMR Aggregates Inc.

Phone: (310) 492-5010

Email: gdangler@rmrholdings.com

Cc: Russ Means, Senior EPS / Field Office Supervisor, Grand Junction DRMS
Jessica Lopez Pearce, BLM Colorado River Field Office