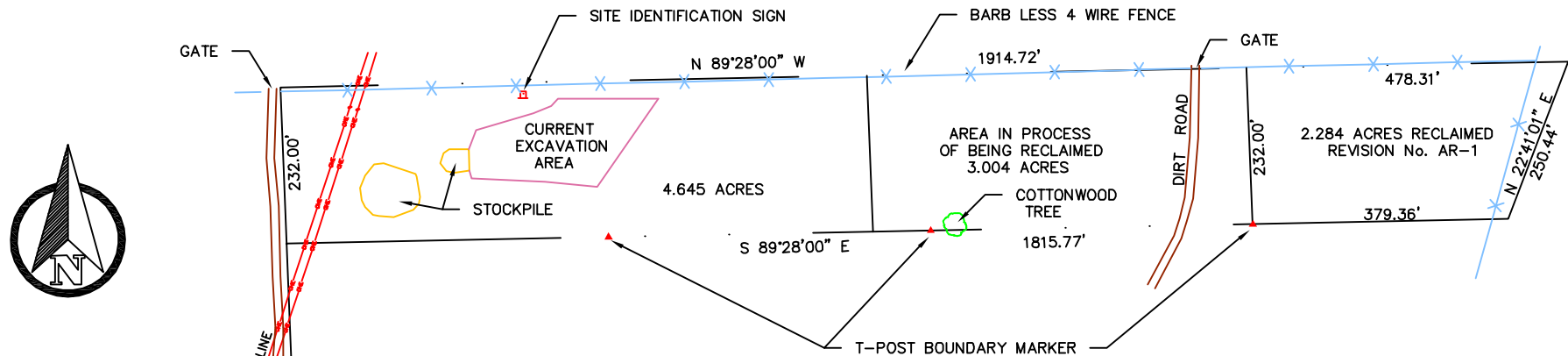


NORTH GATEWAY PARK



LAMAR INDUSTRIAL PARK #1

LAMAR INDUSTRIAL PARK GRAVEL PIT PRIOR YEAR NOTIFICATION

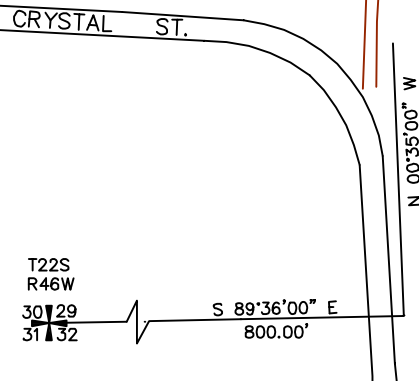
Disturbances to existing land are shown on this map for the year 2015 – 2016.

Reclamation on the East 2.284 Acres accomplished to date at the site. Released from reclamation responsibility, May 2001. Land in the process of being reclaimed is designated on the map. This area will not be utilized for future mining operations.

Only 1.0 Acre new disturbances are expected to occur during the upcoming year and include only utilizing existing stockpiled material, where shown on this map. Should new mining occur in 2016–2017, it will be minimal, to extract 200 tons.

Active operations began November 1st, 2012.
Active operations still on going in 2016.

Approximate 2017 tons of material were utilized from excavated and stockpiled material in the active operations referenced mining months.



**CITY of LAMAR LAND SURVEYING
and ENGINEERING DEPARTMENT**

Project: **LAMAR IND. PARK GRAVEL PIT
PERMIT # M-1987-078**

Date: 6-7-16

Drawn By: msm

Sheet # 1

Scale: 1" = 250'