

# RIVERSIDE SPILLWAYS IVERSON MINE

## WATER DIVISION NO. 1, WELD COUNTY, COLORADO

www.tetratech.com



TETRA TECH

PROJECT LOCATION:

5011 WEST F STREET  
GREELEY, COLORADO 80631

CLIENT INFORMATION:

MARTIN MARIETTA  
1800 NORTH TAFT HILL ROAD  
FT COLLINS, COLORADO 80521

Tt PROJECT No.:

133-24097-15001

CLIENT PROJECT No.:

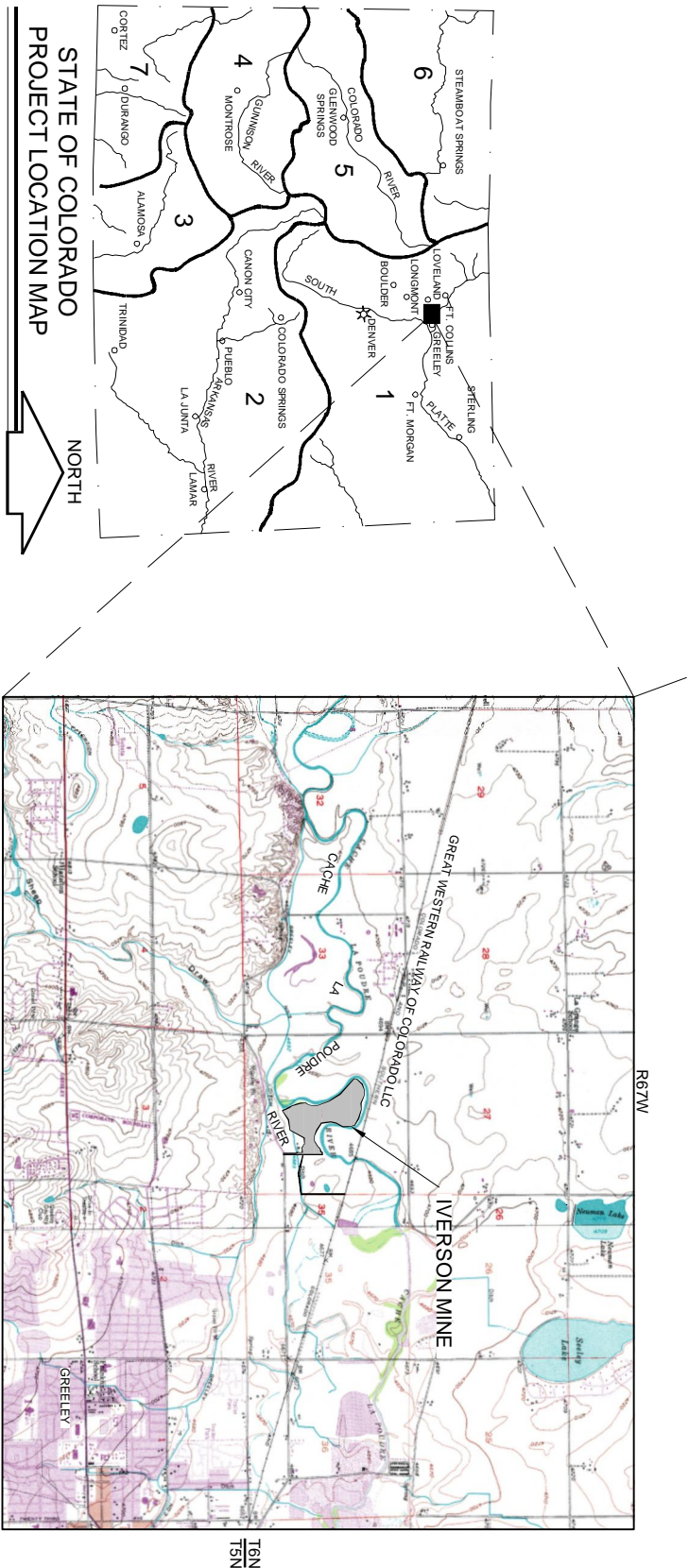
PROJECT DESCRIPTION / NOTES:

ISSUED:

FOR BID: MARCH 10, 2015

SHEET INDEX:

SHEET LIST TABLE	
SHEET NUMBER	SHEET TITLE
G-101	COVER SHEET
C-201	WEST SPILLWAY PLAN VIEW
C-202	WEST SPILLWAY CROSS SECTION AND PROFILE
C-203	EAST SPILLWAY PLAN VIEW
C-204	EAST SPILLWAY CROSS SECTION AND PROFILE
C-205	SPILLWAY DETAILS



NOTES:

TETRA TECH INC. IS NOT A GUARANTOR OF THE PERFORMANCE OF THE WORK.  
TETRA TECH INC. IS NOT RESPONSIBLE FOR SAFETY, IN, ON, OR ABOUT THE PROJECT SITE, NOR FOR COMPLIANCE BY THE APPROPRIATE PARTY WITH ANY REGULATIONS RELATED THERETO.  
TETRA TECH INC. EXERCISES NO CONTROL OVER THE SAFETY OR ADEQUACY OF ANY EQUIPMENT, BUILDING COMPONENTS, TOOLS, OR OTHER WORK AIDS USED IN OR ABOUT THE PROJECT, OR OVER THE SUPERINTENDING OF THE SAME.  
WRITTEN SCALES ON PLAN ARE FOR FULL SIZED 24" X 36" PLANS AND DO NOT APPLY TO REDUCED PLAN SETS.



UNCC  
CALL BEFORE  
YOU DIG

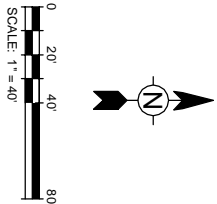
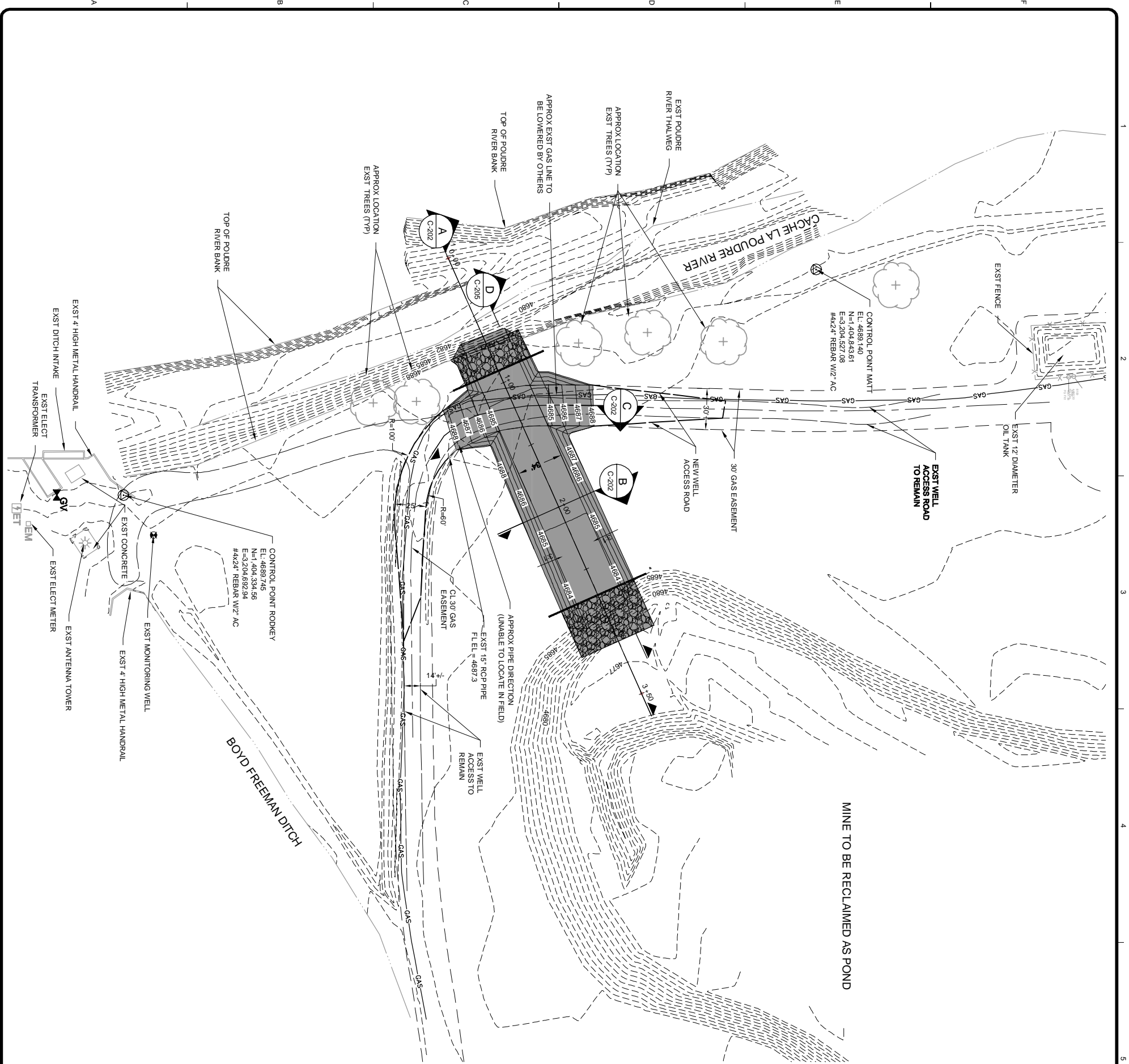
1-800-922-1987

Utility Notification  
Center of Colorado  
Administrative Office 303.223.1991  
Office 303.223.1992  
Fax 303.223.1993

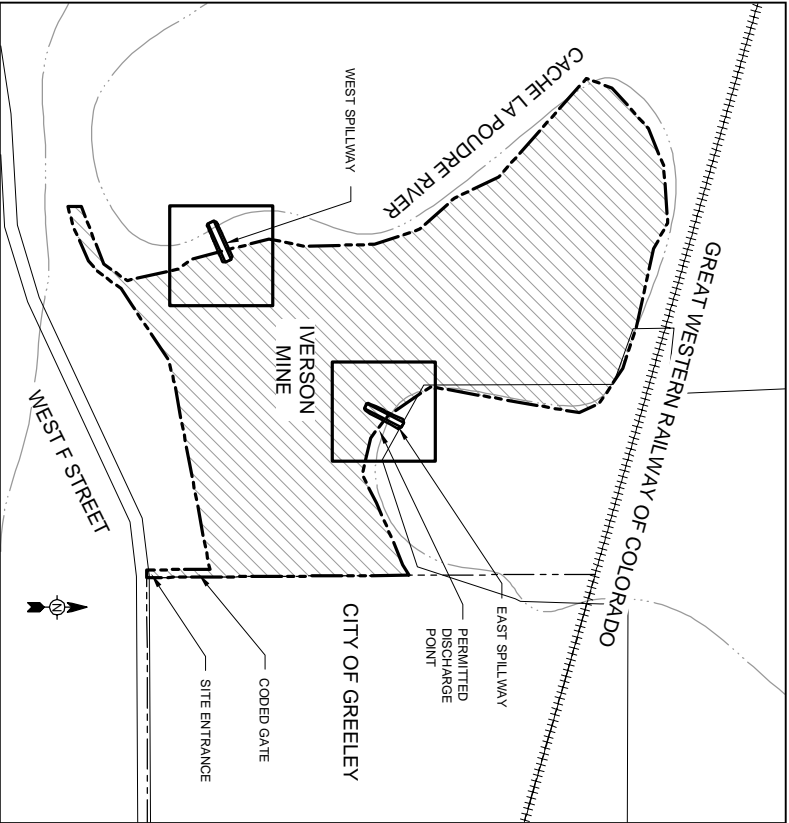
CALL 2 BUSINESS DAYS IN ADVANCE BEFORE YOU DIG, GRADE, OR EXCAVATE  
FOR THE MARKING OF UNDERGROUND MEMBER UTILITIES.

DRAFT

G-101



- NOTES:
1. TOPOGRAPHY BY KING SURVEYING FEBRUARY 2015.
  2. DATUM  
HORIZONTAL: MODIFIED STATE PLANE  
VERTICAL: NGVD 29
  3. BENCHMARK: NGS "U 136" A BRASS DISK SET IN THE TOP OF THE NORTH END OF THE WEST ABUTMENT OF R. R. BRIDGE OVER SMALL CREEK.  
ELEVATION: 4671.13 FEET (NGVD 29)
  4. SPILLWAY WILL TIE INTO PRE-MINING CONTOURS (NOT SHOWN).
  5. SHADED AREA REPRESENTS APPROXIMATE CUT AREA.



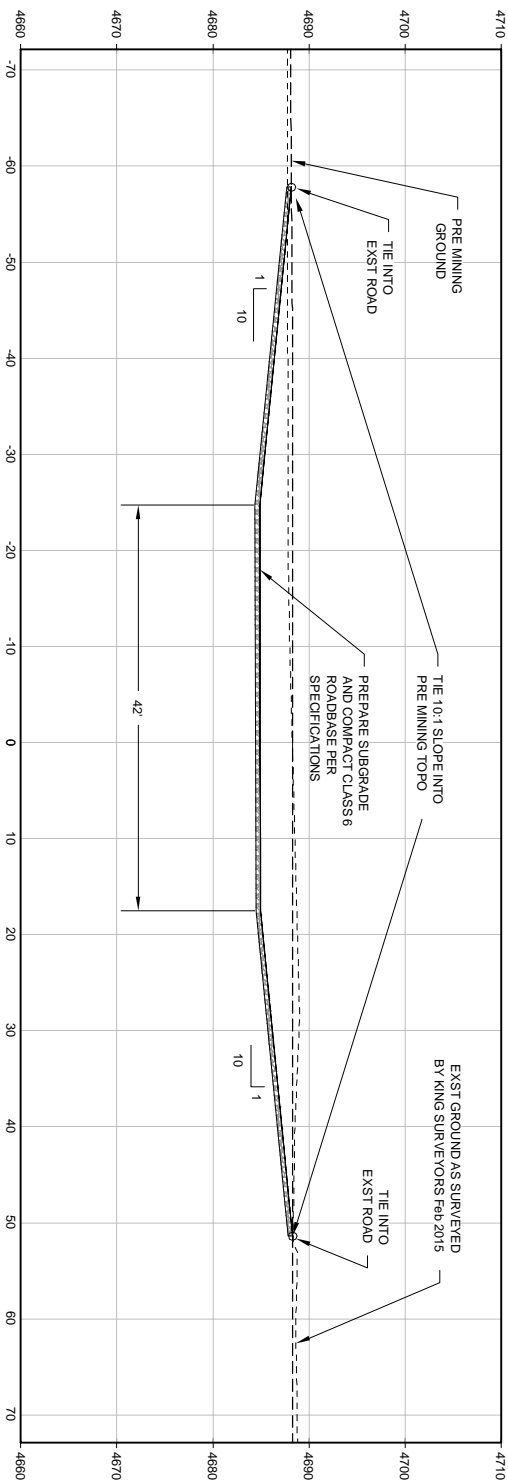
DRAFT

BY	DESCRIPTION	DATE	MARK

MARTIN MARIETTA  
IVERSON MINE  
WEST SPILLWAY  
PLAN VIEW

Project No.: 133-24097-15001
Designed By: GL
Drawn By: RJP
Checked By: JAB

C-201



WEST SPILLWAY SECTION AT NEW ROAD CROSSING



### WEST SPILLWAY PROFILE



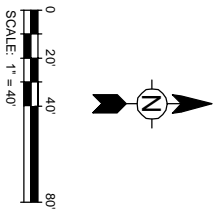
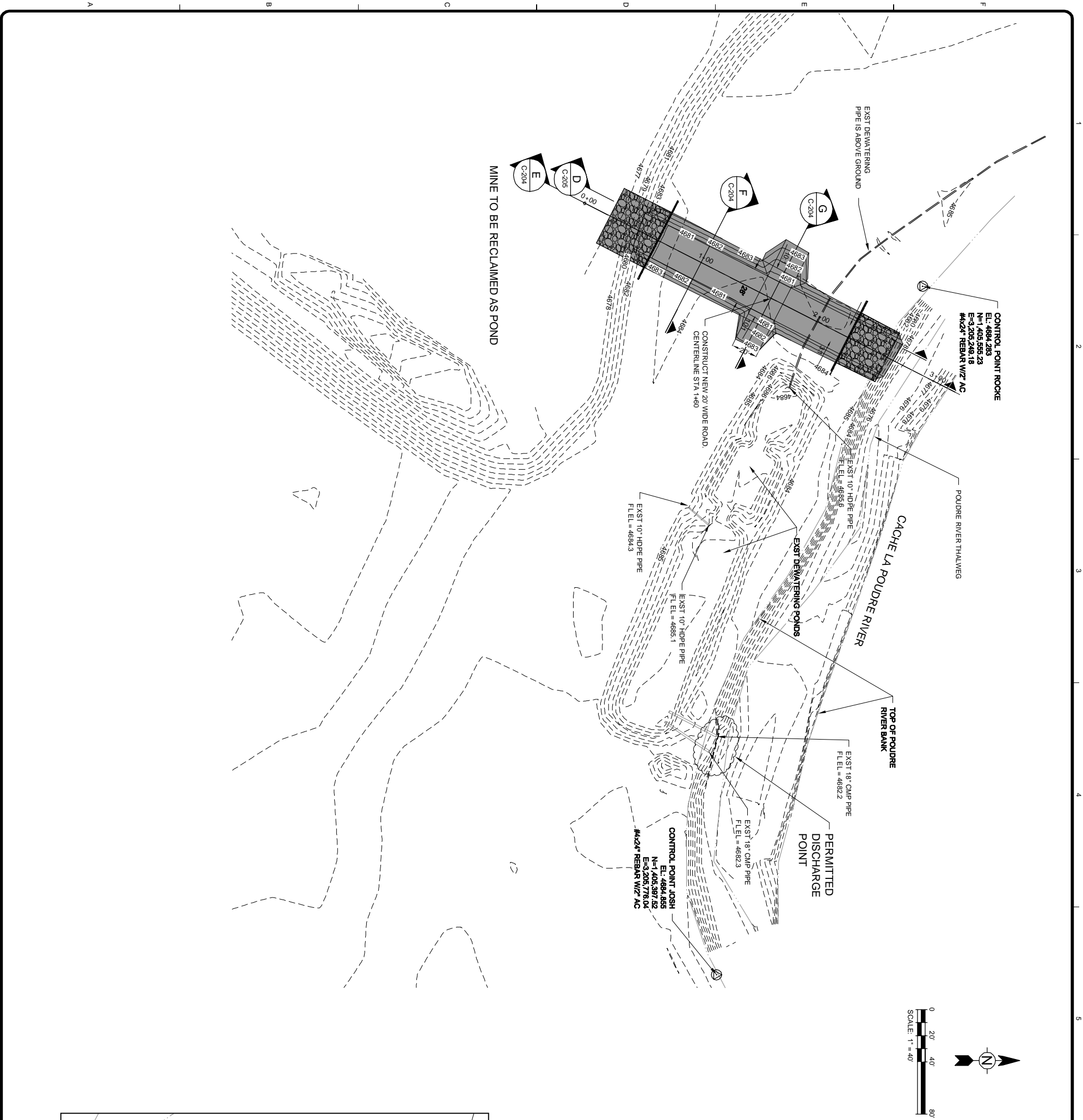
1900 SOUTH SUNSET STREET, SUITE 1-E  
LONGMONT, COLORADO 80501  
PHONE: (303) 772-5282 FAX: (303) 772-7039

DRAFT

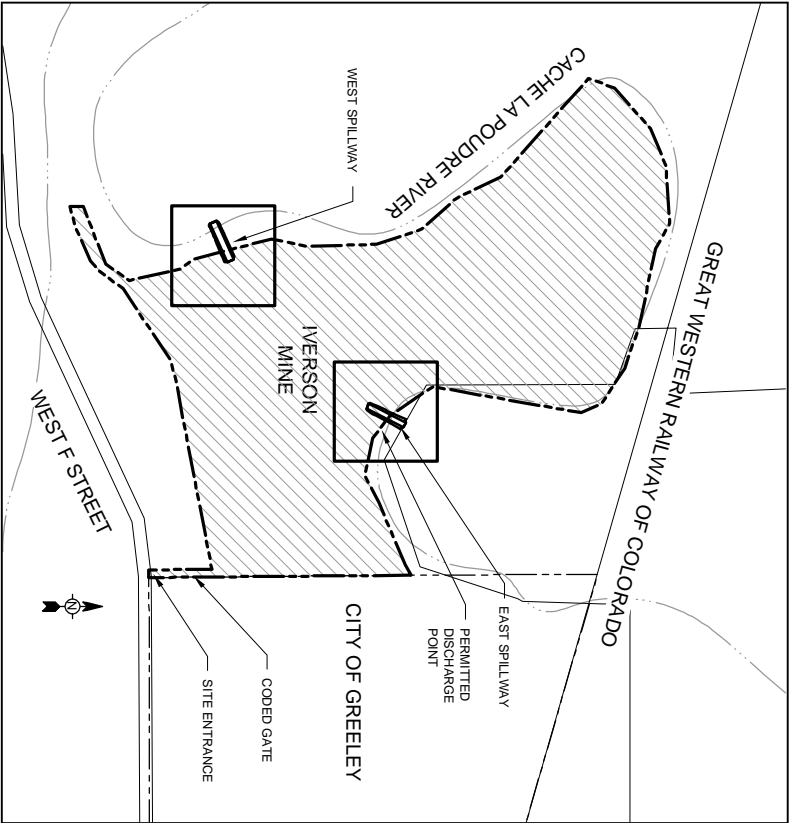
## WEST SPILLWAY CROSS SECTION AND PROFILE

Project No.:	133-24097-15001
Designed By:	GL
Drawn By:	RAP
Checked By:	JAB

C-202



- NOTES:
1. TOPOGRAPHY BY KING SURVEYING FEBRUARY 2015.
  2. DATUM  
HORIZONTAL: MODIFIED STATE PLANE  
VERTICAL: NGVD 29
  3. BENCHMARK: NGS "U 136", A BRASS DISK SET IN THE TOP OF THE NORTH END OF THE WEST ABUTMENT OF R. R. BRIDGE OVER SMALL CREEK.  
ELEVATION: 4671.13 FEET (NGVD 29)
  4. SPILLWAY WILL TIE INTO PRE-MINING CONTOURS (NOT SHOWN)
  5. SHADED AREA REPRESENTS APPROXIMATE CUT AREA.



KEY MAP  
NOT TO SCALE



**TETRA TECH**

www.tetrattech.com

1900 SOUTH SUNSET STREET, SUITE 1-E  
LONGMONT, COLORADO 80501  
PHONE: (303) 772-5282 FAX: (303)772-7039

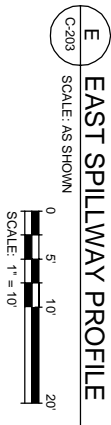
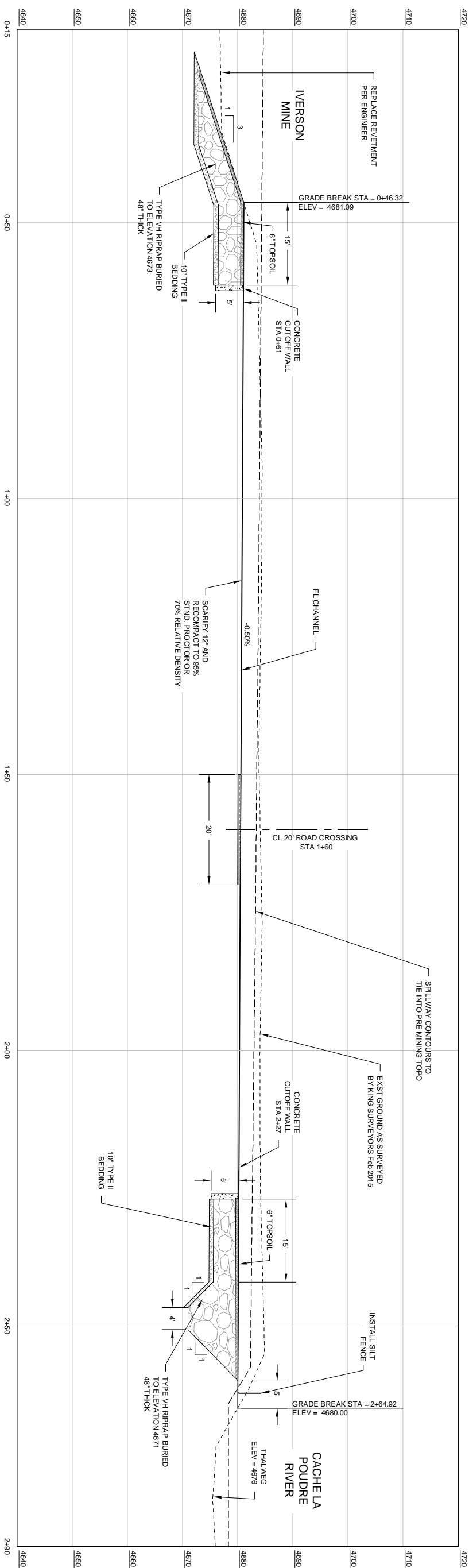
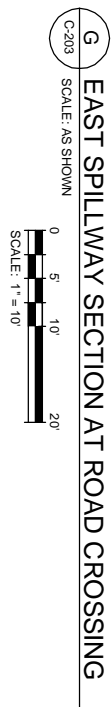
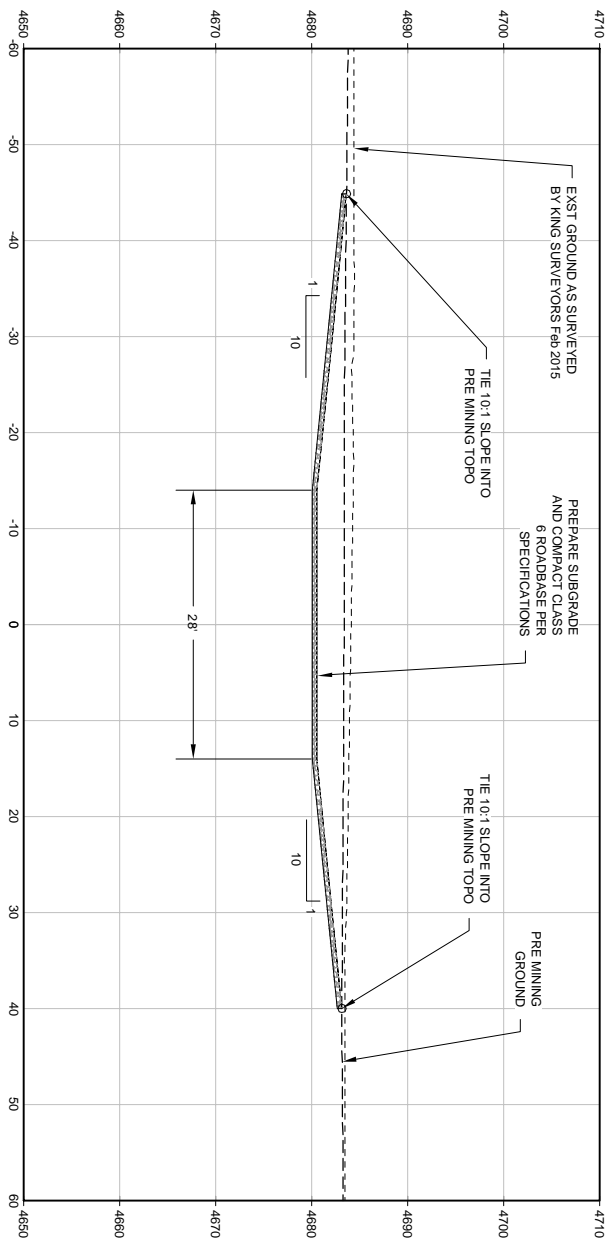
DRAFT

BY	DATE	DESCRIPTION

MARTIN MARIETTA  
IVERSON MINE  
EAST SPILLWAY  
PLAN VIEW

Project No.:	133-24097-15001
Designed By:	GL
Drawn By:	RAP
Checked By:	JAB

C-203



MARK	DATE	DESCRIPTION	BY

DRAFT

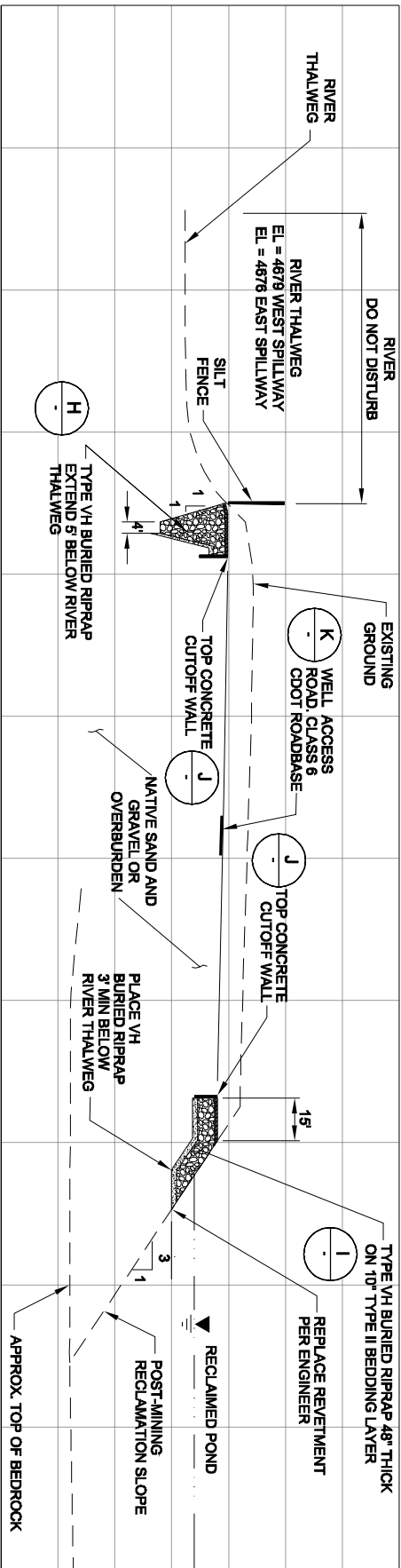


1900 SOUTH SUNSET STREET, SUITE 1-E  
LONGMONT, COLORADO 80501  
PHONE: (303) 772-5282 FAX: (303) 772-7039

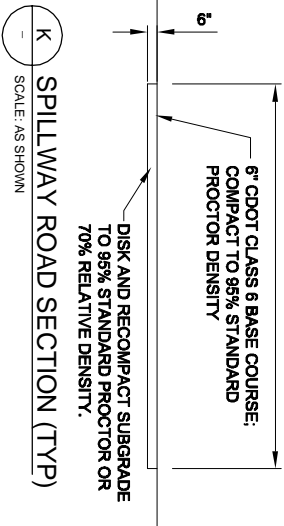
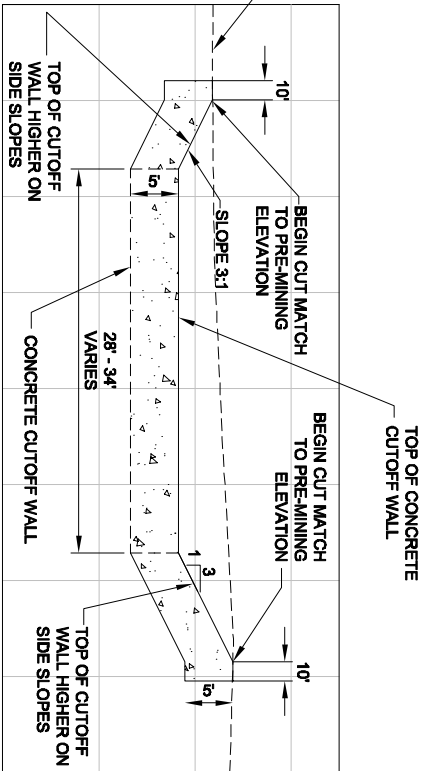
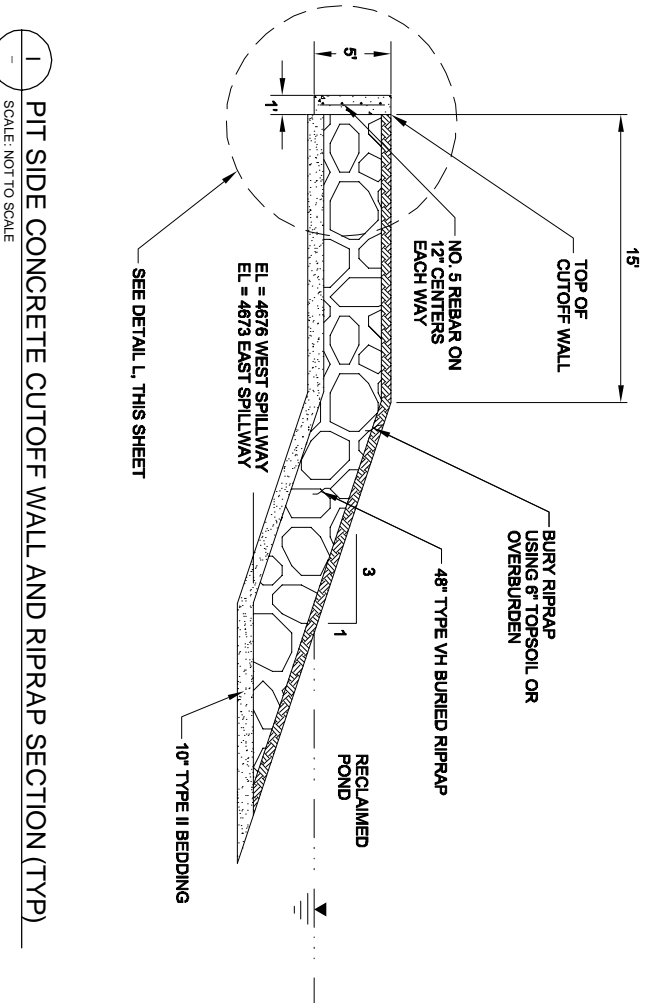
## EAST SPILLWAY CROSS SECTION AND PROFILE

C-204

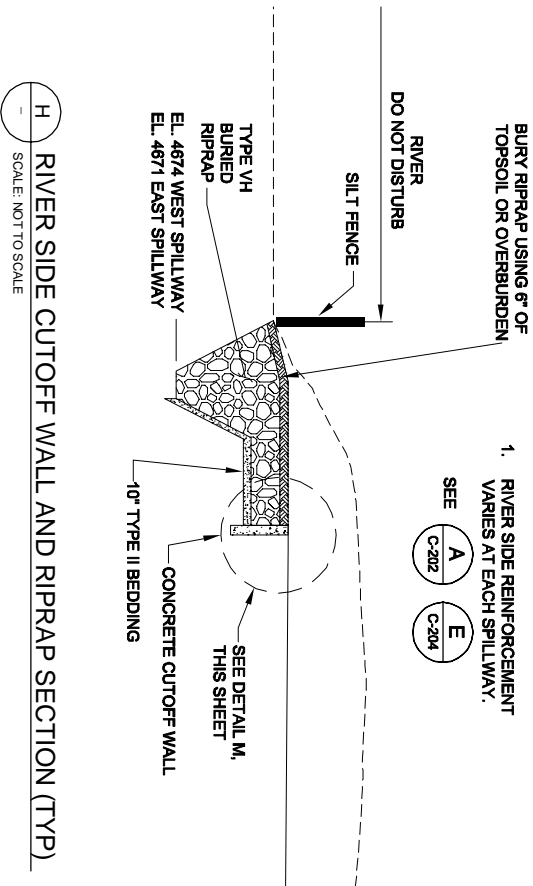
Project No.:	133-24097-15001
Designed By:	GL
Drawn By:	RAP
Checked By:	JAB



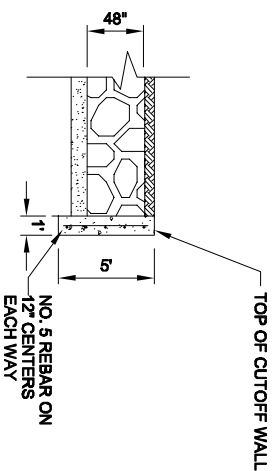
D SPILLWAY TYPICAL PROFILE  
C-201 SCALE: NOT TO SCALE  
C-203



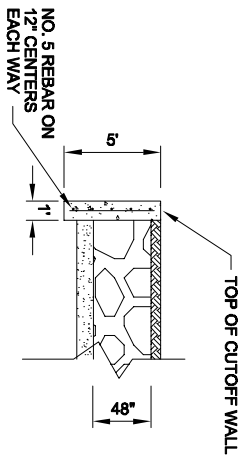
K SPILLWAY ROAD SECTION (TYP)  
SCALE: AS SHOWN



NOTE:  
1. RIVER SIDE REINFORCEMENT VARIES AT EACH SPILLWAY.  
SEE A C-202 E C-204



M RIVER SIDE CONCRETE CUTOFF WALL (TYP)  
SCALE: NOT TO SCALE



L PIT SIDE CONCRETE CUTOFF WALL (TYP)  
SCALE: NOT TO SCALE

- NOTES:
1. CONCRETE CUTOFF WALLS TO BE PLACED IN EXCAVATED TRENCH.
  2. EXTEND BURIED RIPRAP AND CUTOFF WALLS A MINIMUM OF 15' BEYOND TOP OF SPILLWAY CUT ON BOTH RIVER AND PIT SIDES OF SPILLWAY.

I PIT SIDE CONCRETE CUTOFF WALL AND RIPRAP SECTION (TYP)  
SCALE: NOT TO SCALE



TETRA TECH

www.tetratech.com

1900 SOUTH SUNSET STREET, SUITE 1-E  
LONGMONT, COLORADO 80501  
PHONE: (303) 772-5282 FAX: (303)772-7039

DRAFT

MARTIN MARIETTA  
IVERSON MINE  
SPILLWAY DETAILS

MARK	DATE	DESCRIPTION	BY

Project No.: 133-24097-15001	Designed By: GL
Drawn By: RAB	Checked By: JAB

C-205

Bar Measures 1 inch