

July 6, 2015

Jason Burkey  
Oldcastle SW Group, Inc.  
2273 River Road  
Grand Junction, CO 81502



**COLORADO**  
Division of Reclamation,  
Mining and Safety  
Department of Natural Resources

1313 Sherman Street, Room 215  
Denver, CO 80203

***RE: Chambers Gravel Pit, Permit No. M-1979-075, Unresolved Problem Reclamation Plan***

Dear Mr. Burkey:

According to records kept by the Division of Reclamation, Mining and Safety (Division), a problem has been noted regarding the reclamation plan for the above mentioned site

On February 29, 2012 technical revision (TR3) was approved with conditions. The Technical Revision allowed for stabilization of the river banks adjacent to the pit-that were damaged as a result of the 2011 high runoff event. Stipulation 2 imposed that within ninety days following completion of construction activities that a revised reclamation plan be submitted.

On June 12, 2012, the Division received the operators post construction report and on July 10, 2012 the site was inspected. In the enclosed inspection report, the operator was reminded of the due date, September 10, 2012.

On August 17, 2012 the Division received a request to extend the deadline for submission of a final reclamation plan. In the letter mailed out on August 20, 2012 the deadline was extended to March 31, 2015 in order to allow for data collection during the three year monitoring period prior to development of the final reclamation plan. To date no Technical Revision have been received by the Division.

To avoid potential future enforcement actions for non-compliance with State Statutes, Rules and Regulations, and/or conditions specified in your permit for this site, you must submit a Technical Revision with an updated reclamation plan reflecting existing and proposed site conditions ***Friday, July 31, 2015***. Note there is also a \$216 revision fee.

If you require additional information, or have questions or concerns, please contact me at the Division's Grand Junction Field Office.

Sincerely,

**Amy Yeldell**

Environmental Protection Specialist  
Department of Natural Resources  
Division of Reclamation, Mining and Safety  
Phone: (970) 254-8511  
Fax: (970) 241-1516




Cc:  
Russ Means, Senior EPS / Field Office Supervisor, Grand Junction DRMS



**COLORADO DIVISION OF RECLAMATION, MINING AND SAFETY**  
**MINERALS PROGRAM INSPECTION REPORT**  
**PHONE: (303) 866-3567**

The Division of Reclamation, Mining and Safety has conducted an inspection of the mining operation noted below. This report documents observations concerning compliance with the terms of the permit and applicable rules and regulations of the Mined Land Reclamation Board.

<b>MINE NAME:</b> Chambers Gravel Pit	<b>MINE/PROSPECTING ID#:</b> M-1979-075	<b>MINERAL:</b> Sand and gravel	<b>COUNTY:</b> Garfield
<b>INSPECTION TYPE:</b> Monitoring	<b>INSPECTOR(S):</b> Dustin M. Czapla	<b>INSP. DATE:</b> July 10, 2012	<b>INSP. TIME:</b> 11:00
<b>OPERATOR:</b> Oldcastle SW Group, Inc. dba United Companies of Mesa County	<b>OPERATOR REPRESENTATIVE:</b> Jason Burkey	<b>TYPE OF OPERATION:</b> 112c - Construction Regular Operation	

<b>REASON FOR INSPECTION:</b> Normal I&E Program	<b>BOND CALCULATION TYPE:</b> None	<b>BOND AMOUNT:</b> \$14,360.00
<b>DATE OF COMPLAINT:</b> NA	<b>POST INSP. CONTACTS:</b> None	<b>JOINT INSP. AGENCY:</b> None
<b>WEATHER:</b> Clear	<b>INSPECTOR'S SIGNATURE:</b> 	<b>SIGNATURE DATE:</b> July 13, 2012

**GENERAL INSPECTION TOPICS**

This list identifies the environmental and permit parameters inspected and gives a categorical evaluation of each. Any person engaged in any mining operation shall notify the office of any failure or imminent failure, as soon as reasonably practicable after such person has knowledge of such condition or of any impoundment, embankment, or slope that poses a reasonable potential for danger to any persons or property or to the environment; or any environmental protection facility designed to contain or control chemicals or waste which are acid or toxic-forming, as identified in the permit.

(AR) RECORDS----- <u>N</u>	(FN) FINANCIAL WARRANTY----- <u>N</u>	(RD) ROADS----- <u>N</u>
(HB) HYDROLOGIC BALANCE----- <u>Y</u>	(BG) BACKFILL & GRADING----- <u>Y</u>	(EX) EXPLOSIVES----- <u>N</u>
(PW) PROCESSING WASTE/TAILING--- <u>N</u>	(SF) PROCESSING FACILITIES----- <u>N</u>	(TS) TOPSOIL----- <u>N</u>
(MP) GENL MINE PLAN COMPLIANCE- <u>N</u>	(FW) FISH & WILDLIFE----- <u>N</u>	(RV) REVEGETATION--- <u>N</u>
(SM) SIGNS AND MARKERS----- <u>N</u>	(SP) STORM WATER MGT PLAN--- <u>N</u>	(SB) COMPLETE INSP--- <u>N</u>
(ES) OVERBURDEN/DEV. WASTE----- <u>N</u>	(SC) EROSION/SEDIMENTATION--- <u>N</u>	(RS) RECL PLAN/COMP-- <u>N</u>
(AT) ACID OR TOXIC MATERIALS----- <u>N</u>	(OD) OFF-SITE DAMAGE----- <u>N</u>	(ST) STIPULATIONS----- <u>N</u>

Y = Inspected and found in compliance / N = Not inspected / NA = Not applicable to this operation / PB = Problem cited / PV = Possible violation cited

## **OBSERVATIONS**

This inspection was conducted as part of the Division of Reclamation, Mining and Safety's (Division) normal monitoring program. The primary purpose of this inspection was to observe the completed construction of the bank stabilization and river channel restoration approved through TR3. Brent Kerr, representing the Operator, was present during this inspection. Photographs are included with this report in order to illustrate some of the conditions observed during this inspection.

The site is part of the greater United Companies of Mesa County Rifle gravel pit complex, located approximately 2 miles east of Rifle and accessed from Hwy. 6, through the Dick Casey (M-1978-349) and Chambers Pit (M-1979-205) sites. The site is a 112c operation that includes a total of 53.1 permitted acres. The Division currently holds a financial warranty amount of \$14,360.00 for this site.

The Colorado River experienced unusually high flows during the 2011 spring runoff period. During this period, the south bank of the Chambers Gravel Pit pond was completely removed through erosion by the Colorado River. Efforts, approved by the Division through TR3, were made by the operator to restore the Colorado River channel adjacent to the Chambers Gravel Pit and to stabilize the river banks adjacent to the pit. The River in this area was flowing at approximately 2,500 c.f.s. during the time of this inspection. During the 2011 runoff period, peak flows exceeded 25,000 c.f.s.

During this project the main river channel was reestablished approximately 150-170 ft. to the south through removal of a large gravel bar and installation of hydraulic control structures. The structures installed by the operator appeared to be effective and stable. Further monitoring will be necessary in order to determine the long-term effectiveness of the construction efforts. Approval of TR3 required that within 90 days following completion of the construction activities approved through TR3, the Operator submit a revised Reclamation Plan for the Chambers Gravel Pit. The Division received the Operator's post construction report on June 12, 2012. The revised Reclamation Plan shall be submitted to the Division by September 10, 2012.

No problems or violations were noted during this inspection.

Responses to this inspection report should be directed to Dustin Czapla at the Division of Reclamation, Mining and Safety, Grand Junction Field Office, 101 South 3<sup>rd</sup> Street, Room 301, Grand Junction, Colorado 81501, phone number (970) 243-6299.

## PHOTOGRAPHS

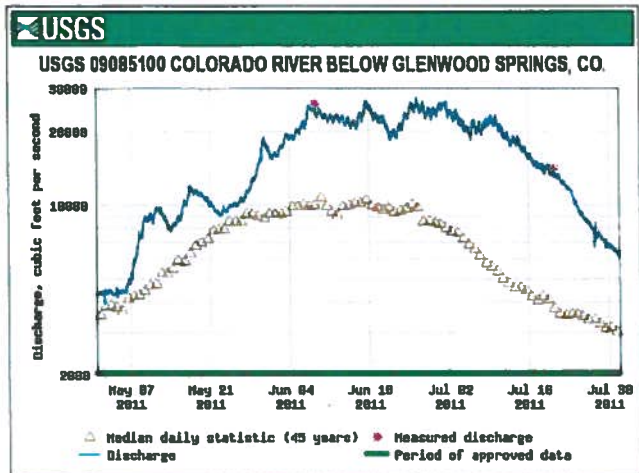


Figure 1: USGS discharge data.

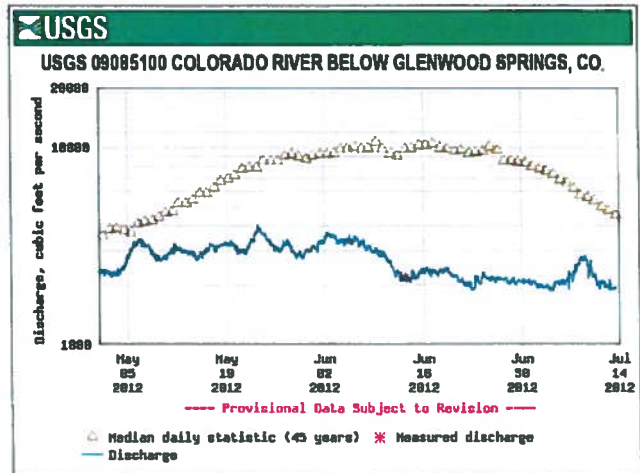


Figure 2: USGS discharge data.

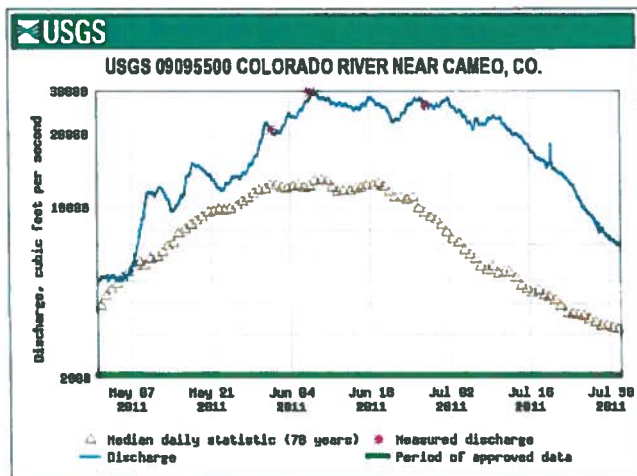


Figure 3: USGS discharge data.

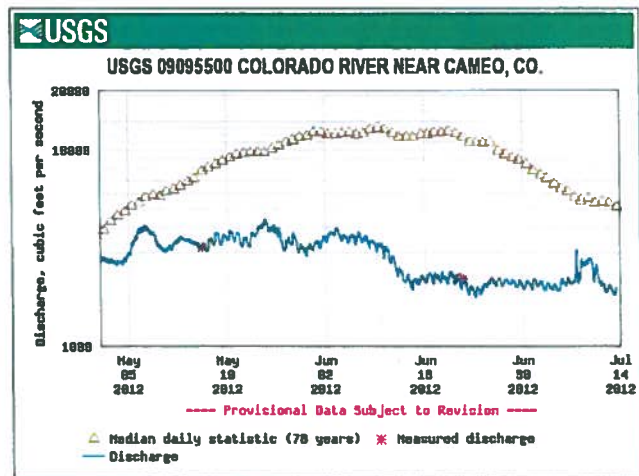


Figure 4: USGS discharge data.

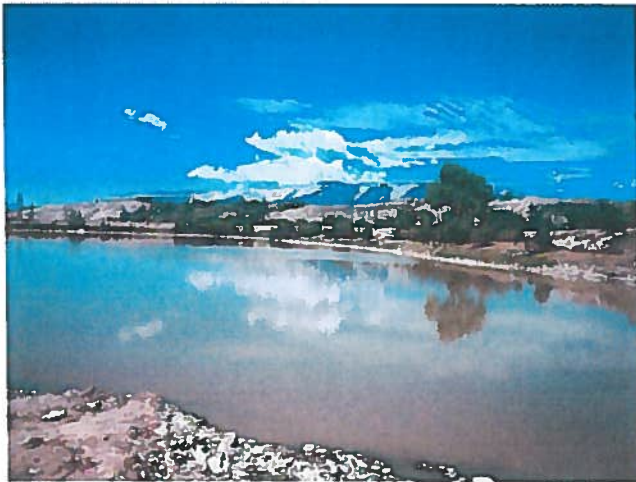




**Figure 5:** View facing upstream from the Chambers pond, of J-hook, rock sills, and rock vanes installed in the Colorado River.



**Figure 6:** View facing downstream from the east side of the Chambers pond.



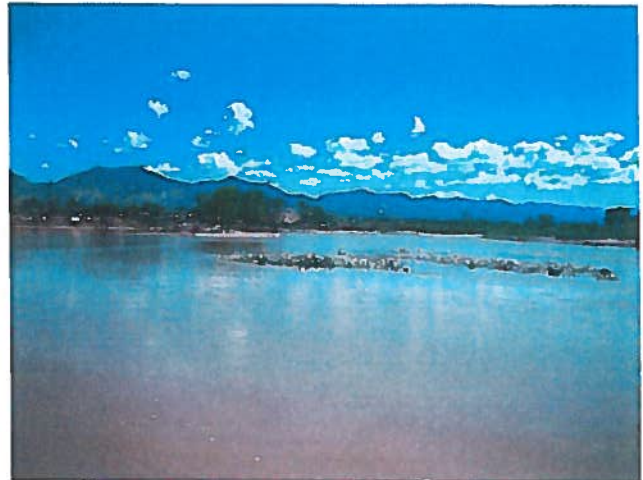
**Figure 7:** View of the Chambers pond, facing west.



**Figure 8:** View of the Chambers pond, facing west.



**Figure 9:** View of the west bank of the Chambers pond stabilized with a toe wood bench, a rock vane and willow transplants.



**Figure 10:** View facing upstream from the east side of the Chambers pond.

**Inspection Contact Address**

Jason Burkey  
Oldcastle SW Group, Inc.  
P.O. Box 3609  
Grand Junction, CO 81502