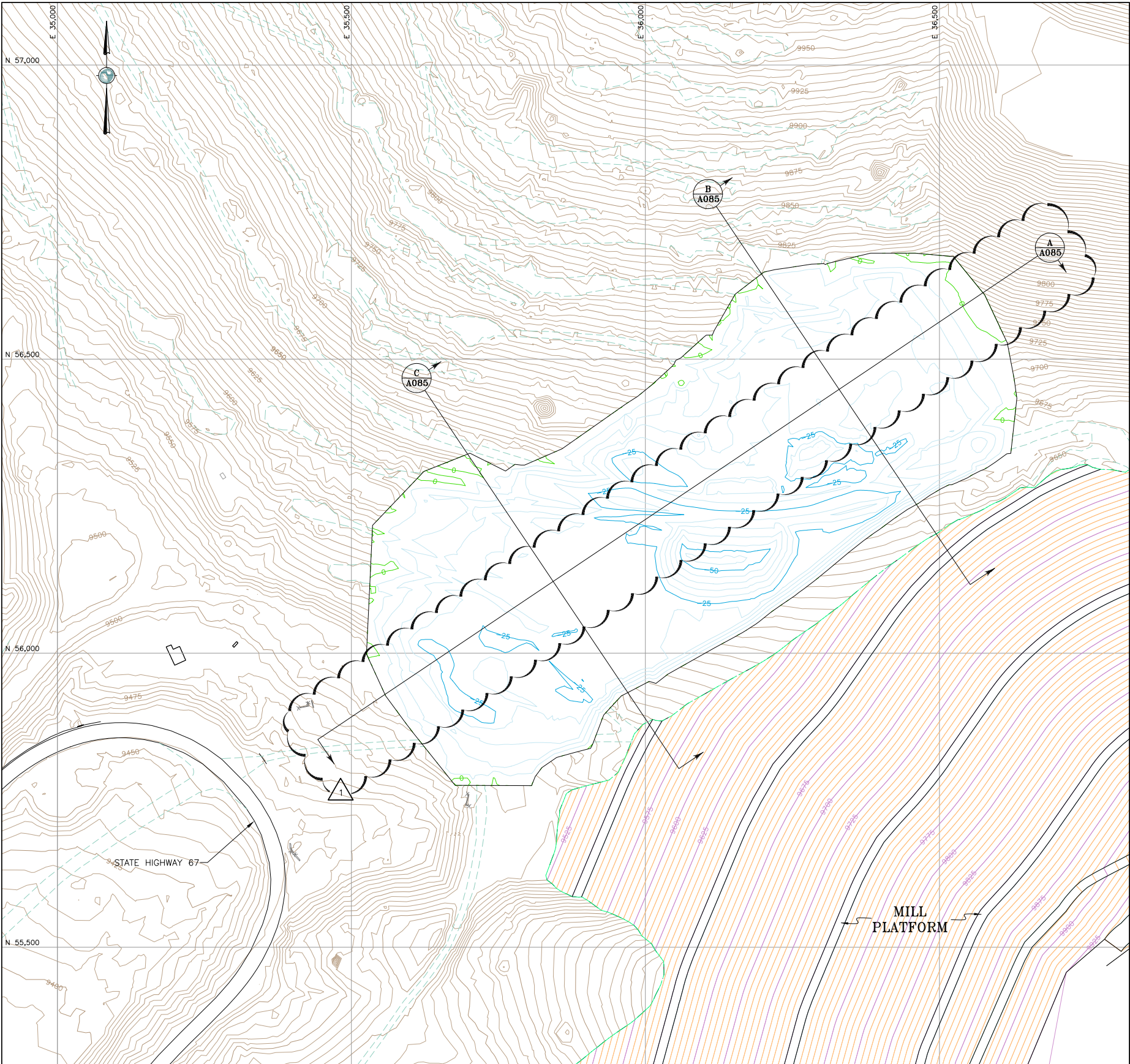
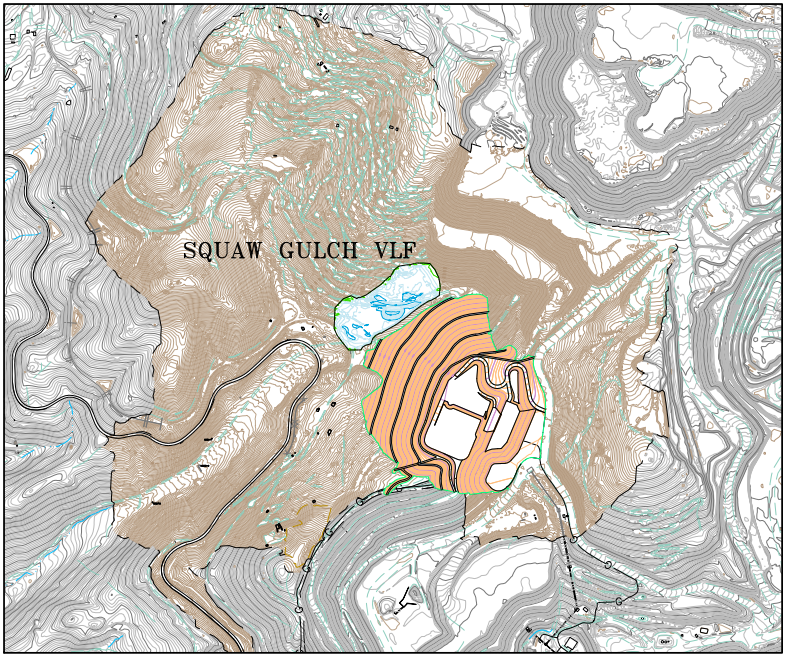
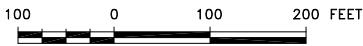


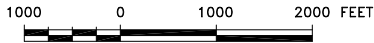
S:\CAD\1125G-Squaw VLF\CADD\Drawings\IFC Drawings\A082-1125GM118.dwg 1/21/2013 2:41 PM



SOIL LINER FILL BORROW



OVERALL PROJECT SITE MAP



LEGEND:

- 10400 EXISTING GROUND SURFACE CONTOUR EL, FEET (AERIAL SURVEY)
- 10400 EXISTING GROUND SURFACE CONTOUR EL, FEET (LAND SURVEY)
- 10400 MILL PLATFORM GROUND SURFACE CONTOUR EL, FEET
- 25 ISOPACH CUT CONTOURS AND EL, FEET
- 0 ISOPACH ZERO CUT/FILL AND EL, FEET
- EXISTING ROADS
- HIGHWAY 67
- EXISTING BUILDING
- TP-50 AMEC TEST PIT JULY 2010
- SWTP-27 SMITH WILLIAMS TEST PIT JUNE 2007
- GTP-15 GOLDER ASSOCIATES TEST PIT 2004
- APPROXIMATE SOIL LINER FILL BORROW AREA

REFERENCE:

EXISTING GROUND TOPOGRAPHY WAS CREATED BY COMBINING THE FOLLOWING FILES  
REC'D FROM FORESIGHT WEST SURVEYING, INC.:  
SQUAW GULCH BASE TOPO - PHASE 1 - REVISED.DWG  
(REV MARCH 14, 2010)  
SQUAW GULCH BASE TOPO - PHASE 2.DWG  
(REV APRIL 24, 2010)  
SQUAW GULCH BASE TOPO - PHASE 3.DWG  
(REV MAY 4, 2010)  
CCV TOPO EXPANSION 12-29-10 NORTH AREA.DWG  
(REV JANUARY 13, 2011)  
CCV TOPO EXPANSION 01-28-11 SOUTH AREA.DWG  
(REV JANUARY 28, 2011)  
SH67 TOPO 7-07-11.DWG  
(REV JULY 11, 2011)  
VLF2 TOPO EXPANSION 8-05-11.DWG  
(REV AUGUST 9, 2011)  
09028-COMPOSITE-TOPO MLE LIMITS.DWG  
(REV MAY 28, 2010 FROM CC&V)

NOTE:

- BASED ON THE TEST PITS PERFORMED IN THE SOIL LINER FILL BORROW AREA, AMEC HAS ESTIMATED APPROXIMATELY 150,000 CUBIC YARDS OF AVAILABLE BORROW AFTER PROCESSING.
- DRAWING IS A NEW ADDITION TO THE ISSUED FOR CONSTRUCTION SET.



1	08/15/13	REV. SECTION CALLOUT - RE-ISSUED FOR CONSTRUCTION	MEN	PBS
0	01/07/13	ISSUED FOR CONSTRUCTION	JNM	DS

DISCLAIMER

AMEC PRODUCED THE INFORMATION PRESENTED ON THIS DRAWING THROUGH THE USE OF TECHNICAL INFORMATION AND PRACTICAL EXPERIENCE SPECIFIC TO ITS EFFORTS. RECEIVING THIS DRAWING DOES NOT GUARANTEE ANY RIGHTS TO SUCH TECHNICAL INFORMATION AND PRACTICAL EXPERIENCE. ANY ALTERATION OR ADAPTATION OF THE DATA OR CONTENTS OF THIS DRAWING SHALL BE AT USER'S SOLE RISK AND WITHOUT ANY LIABILITY OR LEGAL RESPONSIBILITY TO AMEC.

CLIENT	CRIPPLE CREEK & VICTOR GOLD MINING COMPANY			
PROJECT	SQUAW GULCH VLF			
TITLE	SOIL LINER FILL BORROW AREA ISOPACH			
DESIGNED BY	JNM	CHECKED BY	JNM	
DRAWN BY	DS	APPROVED BY	JNM	
FILENAME 1125GM118		DRAWING No. A82	REV 1	

