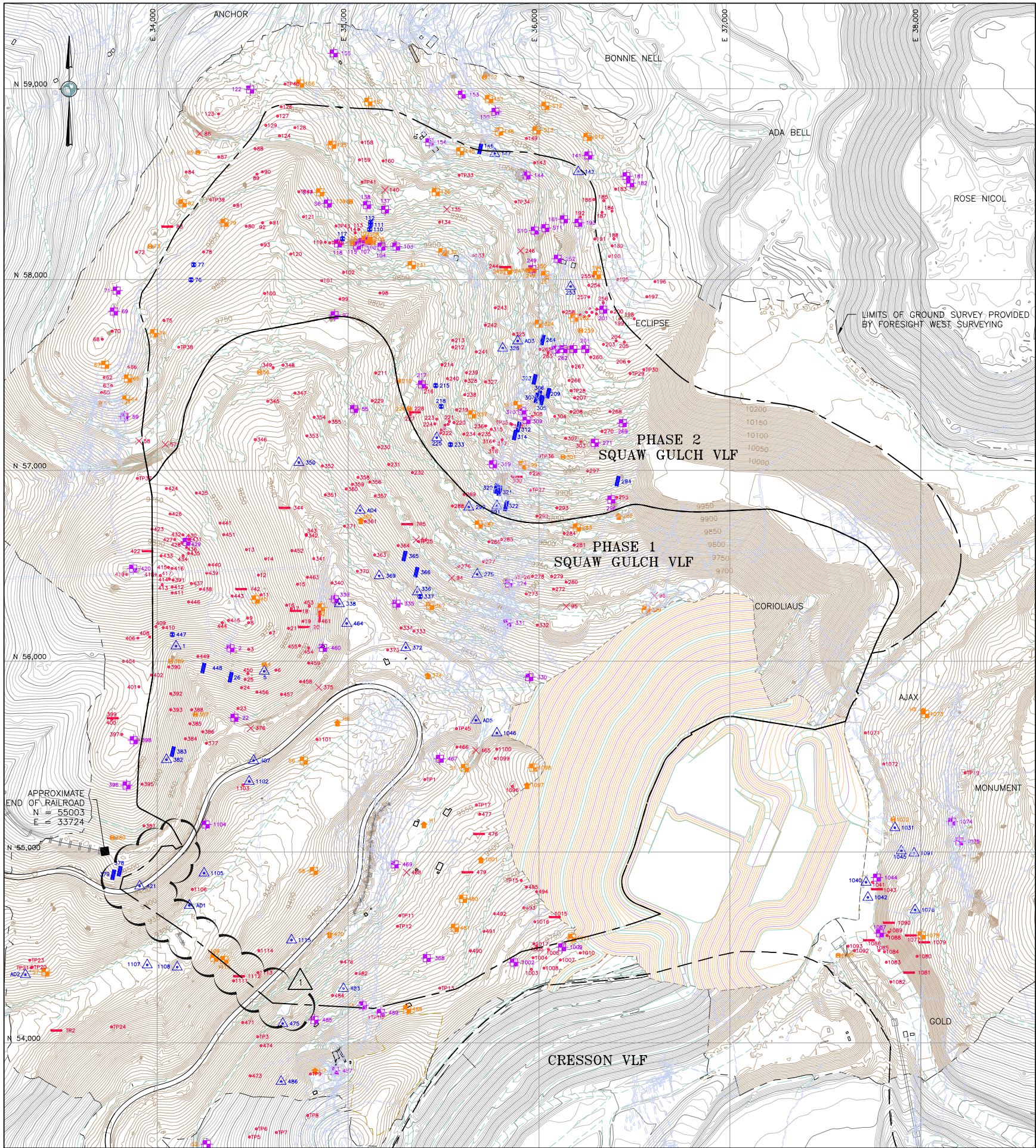


S:\CAD\1125G-Squaw VLF\cadd\CADD Drawings\A060-1125GM04.dwg 1/21/2013 2:41 PM

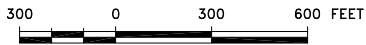


LEGEND:

- EXISTING GROUND CONTOUR AND EL, FEET (AERIAL SURVEY)
- EXISTING GROUND CONTOUR AND EL, FEET (LAND SURVEY)
- MILL PLATFORM GROUND SURFACE CONTOUR EL, FEET
- PAVED ROAD
- EXISTING UNPAVED ROADS
- UNDERGROUND WORKINGS
- PROPOSED LIMITS OF SQUAW GULCH
- EXISTING PHASE LIMITS
- EXISTING BUILDING
- DEEP OR TIMBERED SHAFT
- OPEN OR COLLAPSED ADIT
- TEST PIT OR CONICAL SURFACE WORKING
- DEPRESSION
- ROAD CUT, SAMPLE LOCATION, OR FEATURE OF INTEREST
- COLLAPSED SHAFT
- TRENCH
- SLOT MINE OR OPEN/COLLAPSED STOPE
- SHALLOW SHAFT OR SURFACE WORKING
- HISTORIC BUILDING REMAINS

NOTE:

- FOR INFORMATION ONLY, CONTRACTOR TO VERIFY. SEE DRAWING A65.
- REMOVED EXISTING UTILITIES FROM DRAWING.
- UPDATED EXISTING GROUND TO INCLUDE MILL PLATFORM.



REFERENCE:

EXISTING GROUND TOPOGRAPHY WAS CREATED BY COMBINING THE FOLLOWING FILES
REC'D FROM FORESIGHT WEST SURVEYING, INC.:
SQUAW GULCH BASE TOPO - PHASE 1 - REVISED.DWG
(REC'D MARCH 14, 2010)
SQUAW GULCH BASE TOPO - PHASE 2.DWG
(REC'D APRIL 24, 2010)
SQUAW GULCH BASE TOPO - PHASE 3.DWG
(REC'D MAY 4, 2010)
CCV TOPO EXPANSION 12-29-10 NORTH AREA.DWG
(REC'D JANUARY 13, 2011)
CCV TOPO EXPANSION 01-28-11 SOUTH AREA.DWG
(REC'D JANUARY 28, 2011)
SH67 TOPO 7-07-11.DWG
(REC'D JULY 11, 2011)
VLF2 TOPO EXPANSION 8-05-11.DWG
(REC'D AUGUST 9, 2011)
09028-COMPOSITE-TOPO MLE LIMITS.DWG
(REC'D MAY 28, 2010 FROM CC&V)



CLIENT	CRIPPLE CREEK & VICTOR GOLD MINING COMPANY			
PROJECT	SQUAW GULCH VLF			
TITLE	HISTORIC UNDERGROUND WORKINGS			
DESIGNED BY	JNM	CHECKED BY	JNM	
DRAWN BY	DS	APPROVED BY	KFM	
FILENAME 1125GM04		DRAWING No. A60		REV 1

1	02/13/14	LINER LIMITS/RE-ISSUED FOR CONSTRUCTION	MEN
0	01/07/13	ISSUED FOR CONSTRUCTION	PBS

DISCLAIMER

AMEC PRODUCED THE INFORMATION PRESENTED ON THIS DRAWING THROUGH THE USE OF TECHNICAL INFORMATION AND PRACTICAL EXPERIENCE SPECIFIC TO ITS EFFORTS. RECEIVING THIS DRAWING DOES NOT GUARANTEE ANY RIGHTS TO SUCH TECHNICAL INFORMATION AND PRACTICAL EXPERIENCE. ANY ALTERATION OR ADAPTATION OF THE DATA OR CONTENTS OF THIS DRAWING SHALL BE AT USER'S SOLE RISK AND WITHOUT ANY LIABILITY OR LEGAL RESPONSIBILITY TO AMEC.

