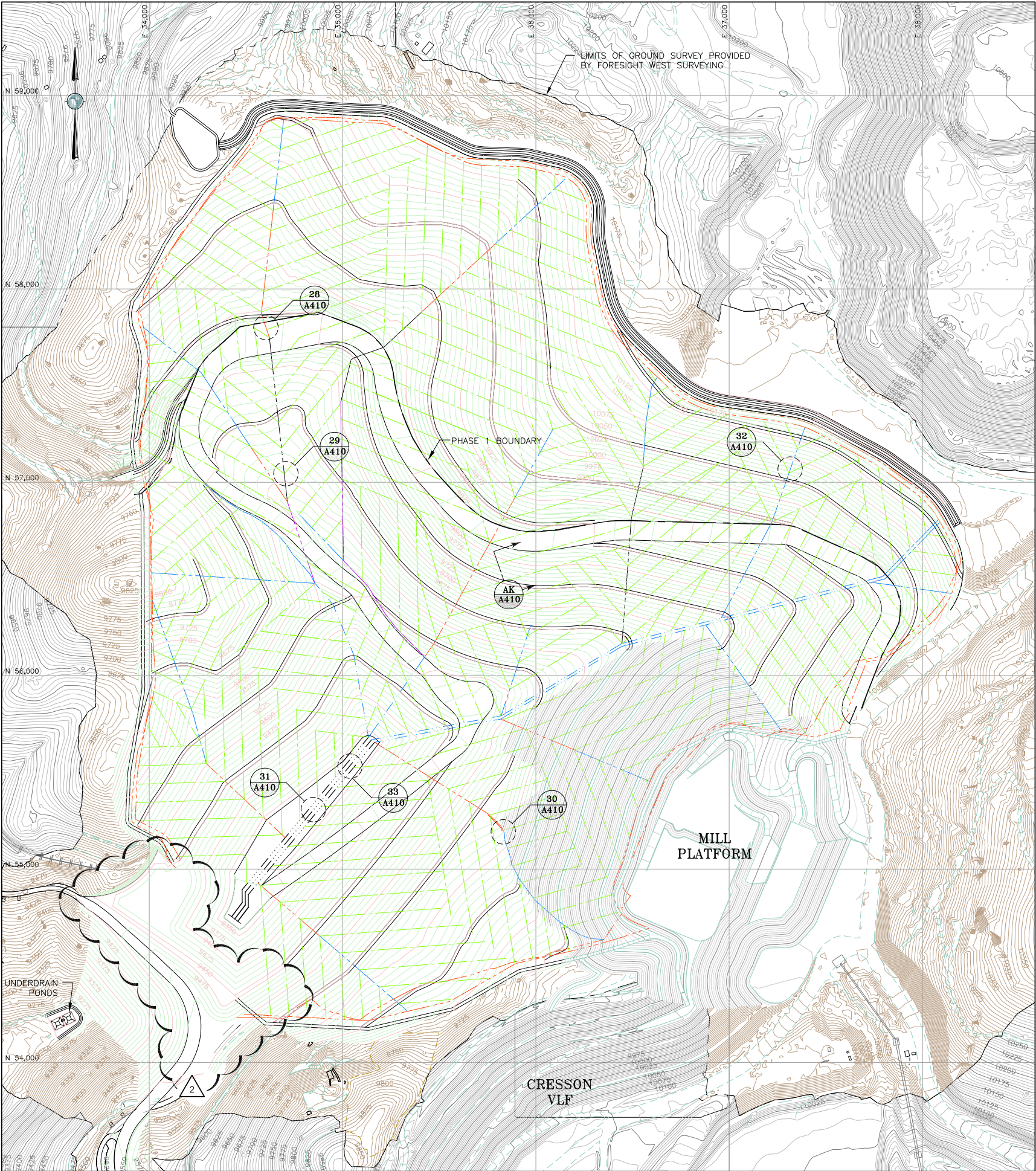


S:\CAD\1125G-Squaw VLF\Cadd\Drawings\FC Drawings\4400-1125GM41.dwg 1/22/2013 8:50 AM



**LEGEND:**

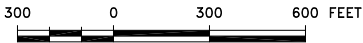
- 5000 EXISTING GROUND SURFACE CONTOUR AND EL, FEET (AERIAL SURVEY)
- 5000 EXISTING GROUND SURFACE CONTOUR AND EL, FEET (LAND SURVEY)
- 100 MILL PLATFORM GROUND SURFACE CONTOUR EL, FEET
- 5000 REGRADED GROUND SURFACE CONTOUR AND EL, FEET
- EXISTING ROADS
- SQUAW GULCH VLF PHASE 1 LIMIT
- EXISTING RAILROAD

**SOLUTION COLLECTION PIPING:**

- 4" DIA. PCPE HIGHWAY GRADE TERTIARY SOLUTION COLLECTION PIPE PLACED ON 95' CENTERS
- 8" DIA. PCPE (ADS N-12 OR EQUIVALENT) SOLUTION COLLECTION PIPE
- 12" DIA. PCPE (ADS N-12 OR EQUIVALENT) SOLUTION COLLECTION PIPE
- 15" DIA. PCPE (ADS N-12 OR EQUIVALENT) SOLUTION COLLECTION PIPE
- 18" DIA. PCPE (ADS N-12 OR EQUIVALENT) SOLUTION COLLECTION PIPE
- 24" DIA. PCPE (ADS N-12 OR EQUIVALENT) SOLUTION COLLECTION PIPE
- 28" DIA. SDR 11 HDPE PRIMARY SOLUTION COLLECTION PIPE

**NOTES:**

- SOLUTION COLLECTION PIPING SHALL BE PLACED WITH A MINIMUM SLOPE OF 1 PERCENT, AND SHALL BE ADJUSTED TO AVOID PLACEMENT PERPENDICULAR TO SLOPE.
- REMOVED EXISTING UTILITIES FROM DRAWING.
- UPDATED EXISTING GROUND TO INCLUDE MILL PLATFORM.
- UNDERDRAIN POND AND PHASE 2 SEDIMENT POND HAVE BEEN REVISED.
- PHASE 2 SURFACE WATER DIVERSION CHANNEL AND SEDIMENT DETENTION POND WILL BE BUILT WITH PHASE 1.
- PSSA EMBANKMENT HAS BEEN WIDENED BY 2'.



**REFERENCE:**

EXISTING GROUND TOPOGRAPHY WAS CREATED BY COMBINING THE FOLLOWING FILES  
RCV FROM FORESIGHT WEST SURVEYING, INC.:  
SQUAW GULCH BASE TOPO - PHASE 1 - REVISED.DWG  
(RCV MARCH 14, 2010)  
SQUAW GULCH BASE TOPO - PHASE 2.DWG  
(RCV APRIL 24, 2010)  
SQUAW GULCH BASE TOPO - PHASE 3.DWG  
(RCV MAY 4, 2010)  
CCV TOPO EXPANSION 12-29-10 NORTH AREA.DWG  
(RCV JANUARY 13, 2011)  
CCV TOPO EXPANSION 01-28-11 SOUTH AREA.DWG  
(RCV JANUARY 28, 2011)  
SH67 TOPO 7-07-11.DWG  
(RCV JULY 11, 2011)  
VLF2 TOPO EXPANSION 8-05-11.DWG  
(RCV AUGUST 9, 2011)  
09028-COMPOSITE-TOPO MLE LIMITS.DWG  
(RCV MAY 28, 2010 FROM CC&V)

2	02/13/14	REVISED LINER LIMITS/RE-ISSUED FOR CONSTRUCTION	MEN PBS
1	08/15/13	REVISED HAUL ROAD / RE-ISSUED FOR CONSTRUCTION	MEN PBS
0	01/07/13	ISSUED FOR CONSTRUCTION	JNM CMT

**DISCLAIMER**

AMEC PRODUCED THE INFORMATION PRESENTED ON THIS DRAWING THROUGH THE USE OF TECHNICAL INFORMATION AND PRACTICAL EXPERIENCE SPECIFIC TO ITS EFFORTS. RECEIVING THIS DRAWING DOES NOT GUARANTEE ANY RIGHTS TO SUCH TECHNICAL INFORMATION AND PRACTICAL EXPERIENCE. ANY ALTERATION OR ADAPTATION OF THE DATA OR CONTENTS OF THIS DRAWING SHALL BE AT USER'S SOLE RISK AND WITHOUT ANY LIABILITY OR LEGAL RESPONSIBILITY TO AMEC.



CLIENT	CRIPPLE CREEK & VICTOR GOLD MINING COMPANY			
PROJECT	SQUAW GULCH VLF			
TITLE	HIGH VOLUME SOLUTION COLLECTION PIPING LAYOUT			
DESIGNED BY	JNM	CHECKED BY	JNM	
DRAWN BY	DS	APPROVED BY	KFM	
FILENAME 1125GM41		DRAWING No. A400		REV 2

