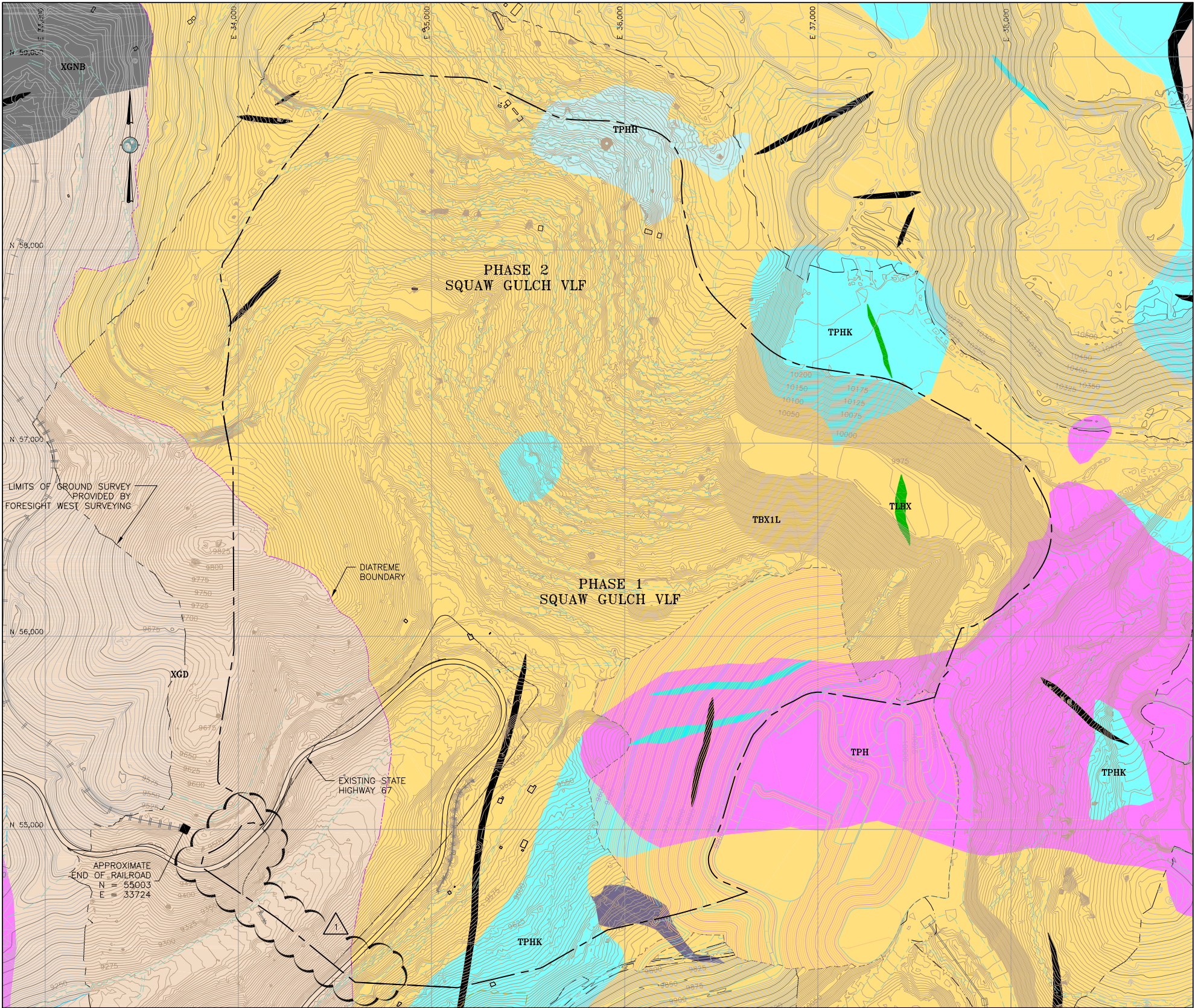
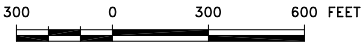


S:\CAD\1125G-Squaw VLF\Cadd\Drawings\040 0040-1125GM03 .dwg 1/21/2013 2:41 PM



REFERENCE:

EXISTING GROUND TOPOGRAPHY WAS CREATED BY COMBINING THE FOLLOWING FILES
RCV FROM FORESIGHT WEST SURVEYING, INC.:
SQUAW GULCH BASE TOPO - PHASE 1 - REVISED.DWG
(RCV MARCH 14, 2010)
SQUAW GULCH BASE TOPO - PHASE 2.DWG
(RCV APRIL 24, 2010)
SQUAW GULCH BASE TOPO - PHASE 3.DWG
(RCV MAY 4, 2010)
CCV TOPO EXPANSION 12-29-10 NORTH AREA.DWG
(RCV JANUARY 13, 2011)
CCV TOPO EXPANSION 01-28-11 SOUTH AREA.DWG
(RCV JANUARY 28, 2011)
SH67 TOPO 7-07-11.DWG
(RCV JULY 11, 2011)
VLF2 TOPO EXPANSION 8-05-11.DWG
(RCV AUGUST 9, 2011)
09028-COMPOSITE-TOPO MLE LIMITS.DWG
(RCV MAY 28, 2010 FROM CC&V)



EXPLANATION

LAMPROPHYRES		THBX - HYDROTHERMAL BRECCIA - LATE STAGE BRECCIA PIPES CONSISTING OF ANGULAR TO ROUNDED, HETEROLITHIC CLASTS IN A ROCK FLOUR MATRIX. TYPICALLY ASSOCIATED WITH PERVASIVE ARGILLIC ALTERATION.
		TLB - BIOTITE BEARING - LAMPROPHYRE DIKE DARK-GREEN, FINE-TO MEDIUM-GRAINED PORPHYRY WITH BIOTITE PHENOCRYSTS IN A FINE-GRAINED GROUNDMASS CONSISTING OF ANALCIME, ALKALI FELDSPAR, BIOTITE, HORNBLLENDE AND MINOR MAGNETITE.
		TLBX - LAMPROPHYRE BRECCIA - LATE-STAGE LAMPROPHYRIC BRECCIA PIPE CONSISTING OF BOTH MATRIX AND CLAST SUPPORTED HETEROLITHIC BRECCIA WITH ABUNDANT DARK-GREEN LAMPROPHYRE CLASTS AND VARIABLE LATE CARBONATE ALTERATION.
TERTIARY PHONOLITES		TSY - TEPHRIPHONOLITE - GREY, MEDIUM-TO FINE-GRAINED INTRUSIVE COMPOSED OF ORTHOCLASE, PLAGIOCLASE, PYROXENE AND MINOR HORNBLLENDE AND ANALCIME, COMMONLY OCCURRING AS SMALL TO MEDIUM SIZED STOCKS.
		TPHD - PHONOLITE DIKE (SAME AS TPH)
		TPH - PHONOLITE - GRAY, BROWN OR PINK, APHANTIC PHONOLITE COMPOSED OF FINE-GRAINED ORTHOCLASE, NEPHELINE, MINOR AEGIRINE-AUGITE, AND ANALCIME.
		TPHK - FELDSPAR BEARING - PLAGIOCLASE PHONOLITE LIGHT-TO MEDIUM-GRAY, PORPHYRY WITH SUBHEDRAL TO EUHEDRAL, MEDIUM-TO COARSE-GRAINED PHENOCRYSTS OF ALKALI FELDSPAR WITH MINOR AMOUNTS OF FELDSPATHOIDS, GLASSY APATITE AND PYROXENES.
		TPHH - HORNBLLENDE YROXENE BEARING - PLAGIOCLASE PHONOLITE GREY, MEDIUM-GRAINED PORPHYRY WITH EUHEDRAL TO SUBHEDRAL HORNBLLENDE, AEGIRINE-AUGITE, AND ALKALI FELDSPAR PHENOCRYSTS.
BRECCIAS		TPHB - BIOTITE BEARING - PLAGIOCLASE PHONOLITE GRAY, FINE-GRAINED PORPHYRY WITH EUHEDRAL BIOTITE AND ALKALI FELDSPAR PHENOCRYSTS.
		TBX1L - CRIPPLE CREEK LAPILLI BRECCIA - GENERALLY MASSIVE, STRUCTURELESS, MATRIX SUPPORTED BRECCIA THAT IS POORLY SORTED, TYPICAL OF DIATREMAL CRATER FILL BRECCIA. CLASTS ARE SUB-ANGULAR TO SUB-ROUNDED AND PRIMARILY COMPOSED OF VARIOUS PHONOLITE UNITS WITH OCCASIONAL PRECAMBRIAN FRAGMENTS. COMMONLY SHOWS VARYING DEGREES OF HYDROTHERMAL ALTERATION.
PRECAMBRIAN		XGD - GRANODIORITE - MASSIVE TO FOLIATED, MEDIUM-TO COARSE-GRAINED, HORNBLLENDE- BIOTITE GRANODIORITE. LOCALLY OCCURS AS AN AUGEN GNEISS. INCLUDES DIABASE DIKES AND SCHISTOSE LENSES.
		XGNB - BIOTITE GNEISS STRONGLY FOLIATED, BIOTITE-QUARTZ-PLAGIOCLASE GNEISS TO SCHIST, WHICH IS LOCALLY MIGMATITIC.

NOTE:

- GEOLOGY MAP WAS PROVIDED BY CC&V TO AMEC ON JULY 20, 2007 IN A DRAWING CALLED INTERPRETIVE GEOLOGICAL MAP OF THE CRIPPLE CREEK MINING DISTRICT.
- REMOVED EXISTING UTILITIES FROM DRAWING.
- UPDATED EXISTING GROUND TO INCLUDE MILL PLATFORM.

LEGEND:

	EXISTING GROUND SURFACE CONTOUR EL, FEET (AERIAL SURVEY)
	EXISTING GROUND SURFACE CONTOUR EL, FEET (LAND SURVEY)
	MILL PLATFORM GROUND SURFACE CONTOUR EL, FEET
	STATE HIGHWAY 67
	EXISTING ROADS
	EXISTING DRAINAGES
	EXISTING RAILROAD
	SQUAW GULCH VLF BOUNDARY (LIMITS OF LINER)
	DIATREME BOUNDARY
	PSSA LIMITS
	EXISTING BUILDING



CLIENT		CRIPPLE CREEK & VICTOR GOLD MINING COMPANY			
PROJECT		SQUAW GULCH VLF			
TITLE		SITE GEOLOGY MAP			
DESIGNED BY	JNM	CHECKED BY	JNM		
DRAWN BY	DS	APPROVED BY	KFM		
FILENAME		DRAWING No.		REV	
1125GM03		A40		1	

1	02/13/14	LIMITS OF LINER/RE-ISSUED FOR CONSTRUCTION	MEN	PBS
0	01/07/13	ISSUED FOR CONSTRUCTION	JNM	CMT

DISCLAIMER

AMEC PRODUCED THE INFORMATION PRESENTED ON THIS DRAWING THROUGH THE USE OF TECHNICAL INFORMATION AND PRACTICAL EXPERIENCE SPECIFIC TO ITS EFFORTS. RECEIVING THIS DRAWING DOES NOT GUARANTEE ANY RIGHTS TO SUCH TECHNICAL INFORMATION AND PRACTICAL EXPERIENCE. ANY ALTERATION OR ADAPTATION OF THE DATA OR CONTENTS OF THIS DRAWING SHALL BE AT USER'S SOLE RISK AND WITHOUT ANY LIABILITY OR LEGAL RESPONSIBILITY TO AMEC.

