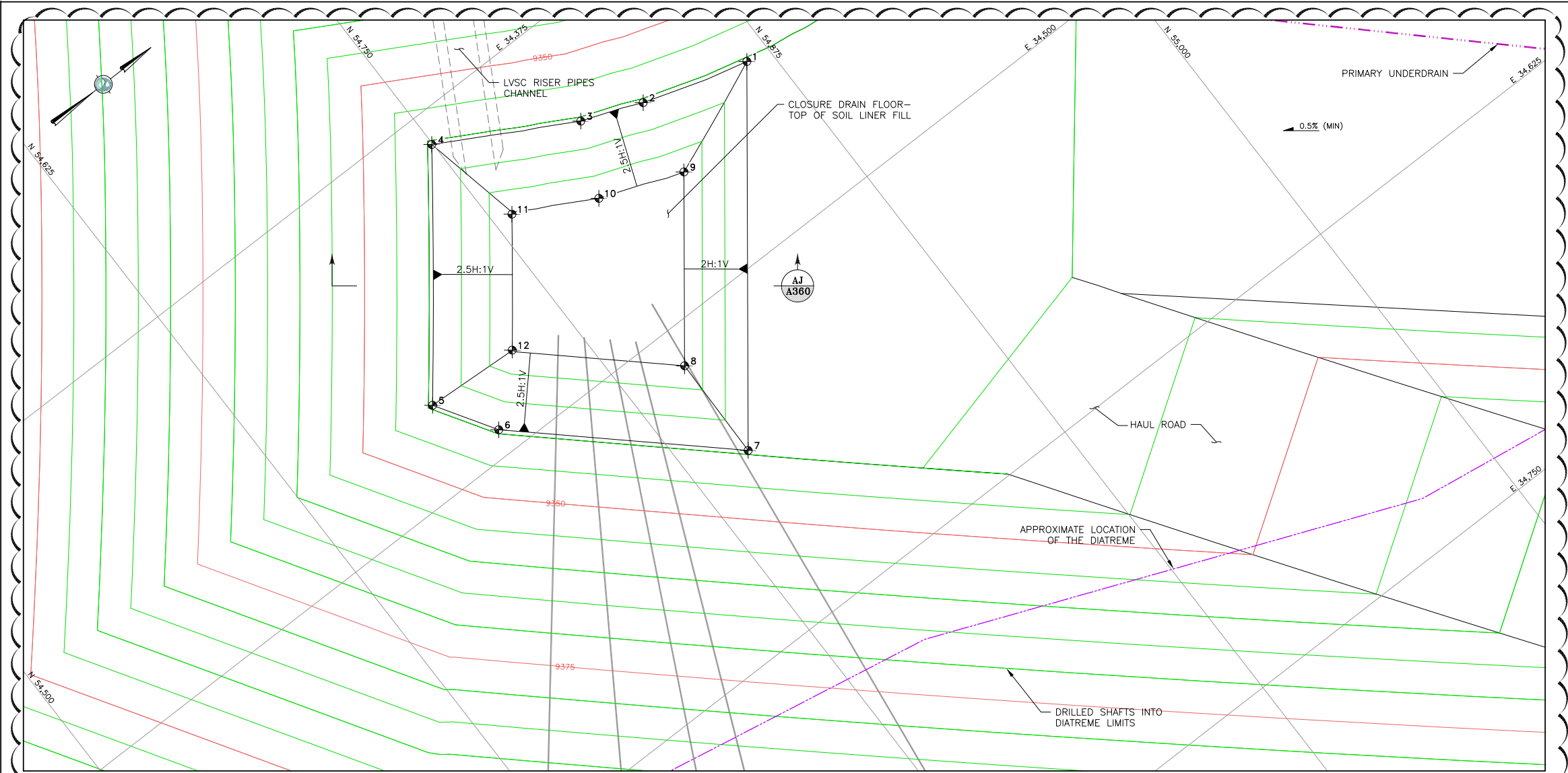
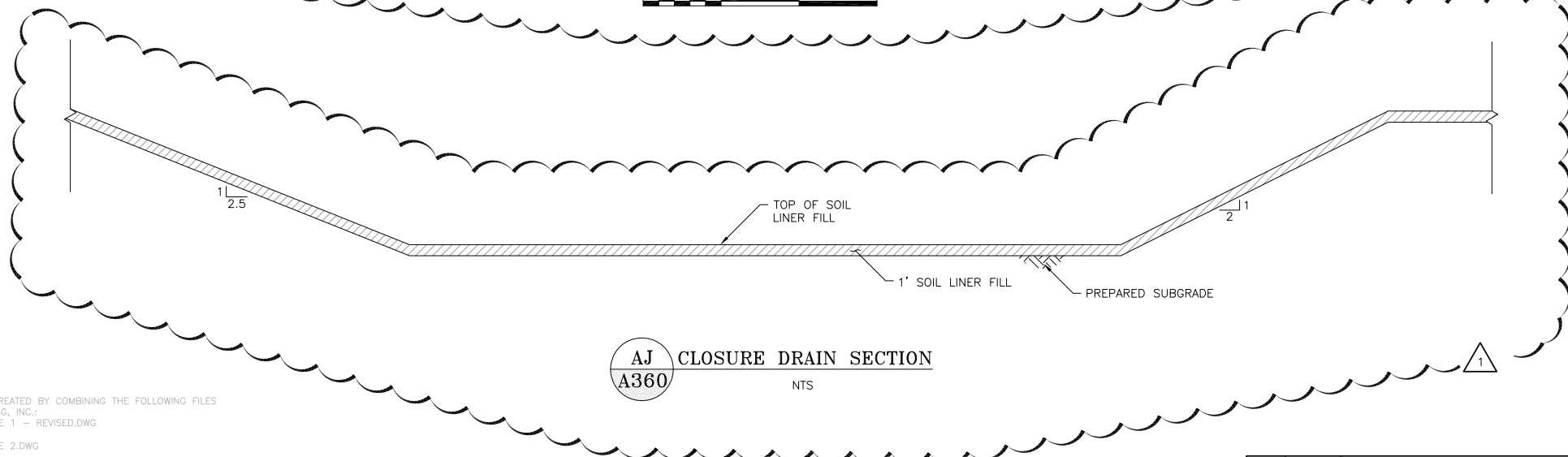


S:\CAD\1125G-Squaw VLF\Cadd\CADD DRAWINGS\FC Drawings\c360-1125GM22.dwg 1/22/2013 8:50 AM



CLOSURE DRAIN GRADING PLAN

25 0 25 50 FEET



AJ CLOSURE DRAIN SECTION
NTS

REFERENCE:

EXISTING GROUND TOPOGRAPHY WAS CREATED BY COMBINING THE FOLLOWING FILES
RECV FROM FORESIGHT WEST SURVEYING, INC.:
SQUAW GULCH BASE TOPO - PHASE 1 - REVISED.DWG
(RECV MARCH 14, 2010)
SQUAW GULCH BASE TOPO - PHASE 2.DWG
(RECV APRIL 24, 2010)
SQUAW GULCH BASE TOPO - PHASE 3.DWG
(RECV MAY 4, 2010)
CCV TOPO EXPANSION 12-29-10 NORTH AREA.DWG
(RECV JANUARY 13, 2011)
CCV TOPO EXPANSION 01-28-11 SOUTH AREA.DWG
(RECV JANUARY 28, 2011)
SH67 TOPO 7-07-11.DWG
(RECV JULY 11, 2011)
VLF2 TOPO EXPANSION 8-05-11.DWG
(RECV AUGUST 9, 2011)
09028-COMPOSITE-TOPO MLE LIMITS.DWG
(RECV MAY 28, 2010 FROM CC&V)

LEGEND:

- PROPOSED GROUND SURFACE CONTOUR AND EL, FEET
- PRIMARY UNDERDRAIN PIPE
- DRILLED SHAFTS

NOTES:

- SHAFTS SHALL BE DRILLED PRIOR TO CONSTRUCTION OF THE CLOSURE DRAIN, WITH A MINIMUM DIAMETER OF 8 INCHES.
- SHAFTS SHALL BE EXTEND A MINIMUM OF 10 FEET INTO THE DIATREME
- CLOSURE DRAIN SHALL BE CONSTRUCTED PRIOR TO THE SOIL LINER INSTALLATION IN THE PSSA.

CLOSURE DRAIN
CONTROL POINTS

ID	NORTHING	EASTING	ELEVATION
1	54,865.53	34,436.40	9339.37
2	54,824.08	34,424.44	9339.37
3	54,800.65	34,415.32	9339.37
4	54,749.57	34,387.20	9339.37
5	54,688.05	34,467.12	9339.37
6	54,702.51	34,490.27	9339.37
7	54,773.81	34,555.63	9339.37
8	54,774.43	34,514.72	9327.14
9	54,820.15	34,455.28	9327.14
10	54,787.91	34,443.21	9327.14
11	54,757.57	34,427.48	9327.14
12	54,725.48	34,469.11	9327.14



CLIENT	CRIPPLE CREEK & VICTOR GOLD MINING COMPANY		
PROJECT	SQUAW GULCH VLF		
TITLE	CLOSURE DRAIN GRADING PLAN AND SECTION		
DESIGNED BY	JNM	CHECKED BY	MEN
DRAWN BY	DS	APPROVED BY	CJB
FILENAME	1125GM22	DRAWING No.	A360
REV	1		

1	06/11/13	REVISED CLOSURE DRAIN GRADING RE-ISSUED FOR CONSTRUCTION	MEN	CAS
0	01/07/13	ISSUED FOR CONSTRUCTION	JNM	CMT
DISCLAIMER				
AMEC PRODUCED THE INFORMATION PRESENTED ON THIS DRAWING THROUGH THE USE OF TECHNICAL INFORMATION AND PRACTICAL EXPERIENCE SPECIFIC TO ITS EFFORTS. RECEIVING THIS DRAWING DOES NOT GUARANTEE ANY RIGHTS TO SUCH TECHNICAL INFORMATION AND PRACTICAL EXPERIENCE. ANY ALTERATION OR ADAPTATION OF THE DATA OR CONTENTS OF THIS DRAWING SHALL BE AT USER'S SOLE RISK AND WITHOUT ANY LIABILITY OR LEGAL RESPONSIBILITY TO AMEC.				

