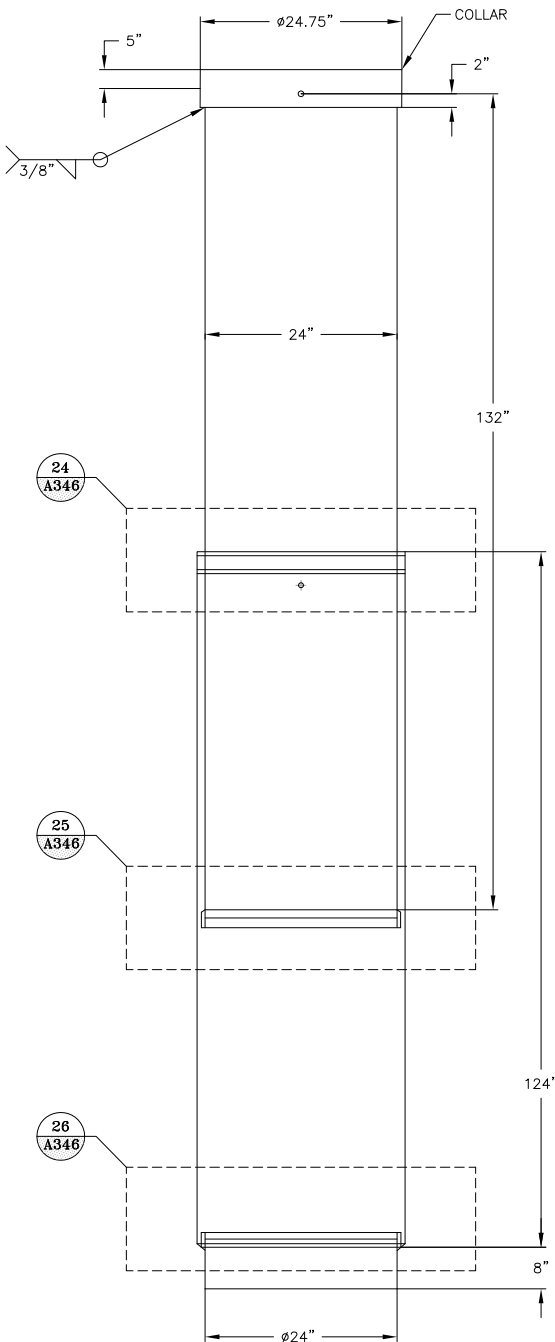
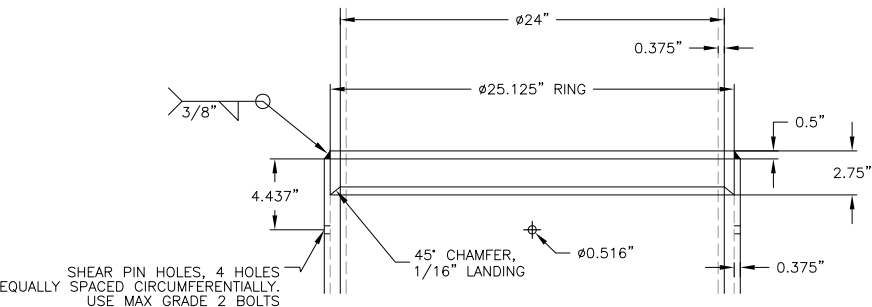


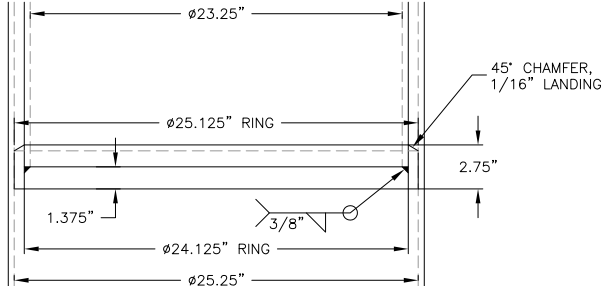
26" O.D. X 24" O.D. X 3/8" WALL LOW CARBON STEEL SINGLE
STAGE COMPRESSION SECTION, 117" DISPLACEMENT WITH COLLAR.
264" FULLY EXTENDED, 147" COLLAPSED. BASE PIPE PER ASTM
A139 GR-B



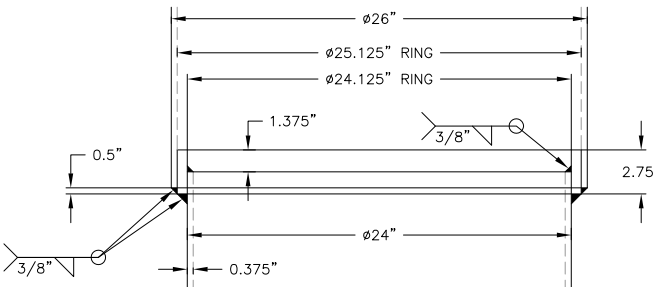
23 SINGLE STAGE COMPRESSION SECTION DETAIL
A345 NTS



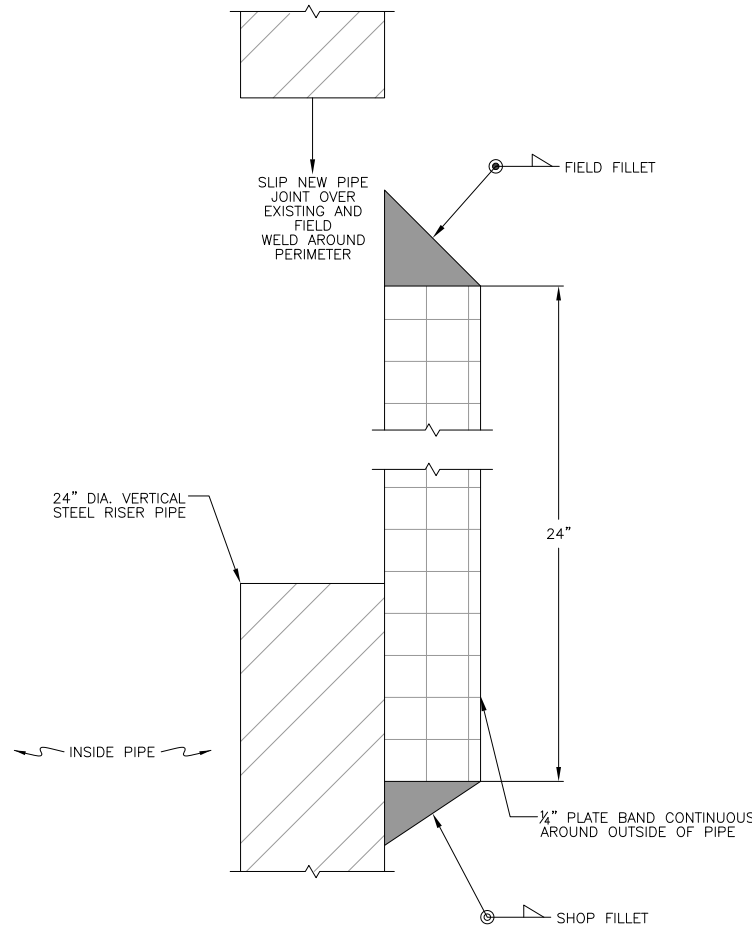
24 TOP FIXED RING DETAIL
A346 NTS



25 INTERNAL SLIDER RING DETAIL
A346 NTS



26 BOTTOM FIXED RING DETAIL
A346 NTS



27 27 TYPICAL 24" VERTICAL
A330 A345 RISER PIPE CONNECTION DETAIL
NTS



CLIENT	CRIPPLE CREEK & VICTOR GOLD MINING COMPANY			
PROJECT	SQUAW GULCH VLF			
TITLE	PSSA RISER SECTIONS AND DETAILS SHEET 4 OF 5			
DESIGNED BY	JNM	CHECKED BY	JNM	
DRAWN BY	DS	APPROVED BY	KFM	
FILENAME	1125GD38	DRAWING No.	A346	REV
				0

0	01/07/13	ISSUED FOR CONSTRUCTION	JNM	CMT
DISCLAIMER				
AMEC PRODUCED THE INFORMATION PRESENTED ON THIS DRAWING THROUGH THE USE OF TECHNICAL INFORMATION AND PRACTICAL EXPERIENCE SPECIFIC TO ITS EFFORTS. RECEIVING THIS DRAWING DOES NOT GUARANTEE ANY RIGHTS TO SUCH TECHNICAL INFORMATION AND PRACTICAL EXPERIENCE. ANY ALTERATION OR ADAPTATION OF THE DATA OR CONTENTS OF THIS DRAWING SHALL BE AT USER'S SOLE RISK AND WITHOUT ANY LIABILITY OR LEGAL RESPONSIBILITY TO AMEC.				

