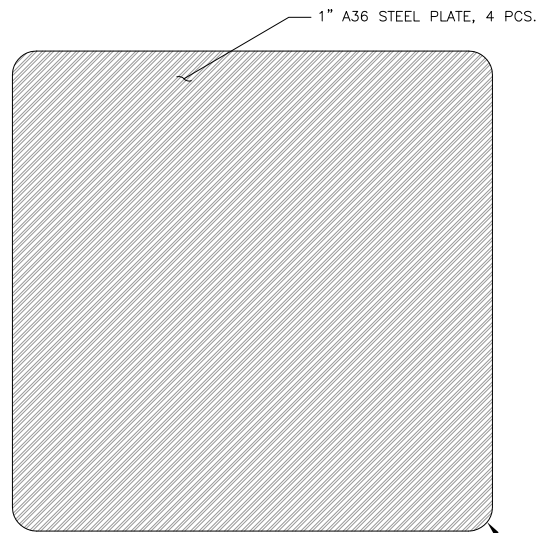
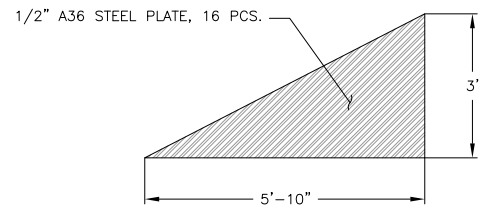


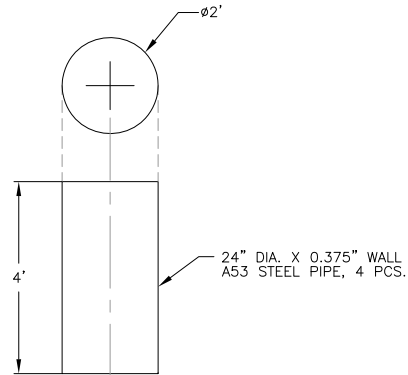
S:\CAD\1125G-Squaw VLF\Cadd\Drawings\FC Drawings\340-1125GD107.dwg 1/22/2013 8:50 AM



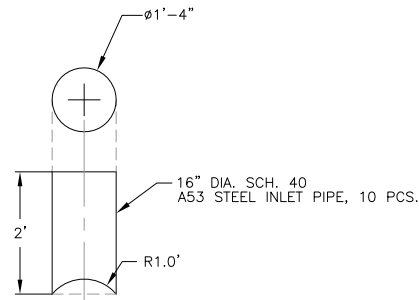
1 STEEL BASE PLATE  
NTS



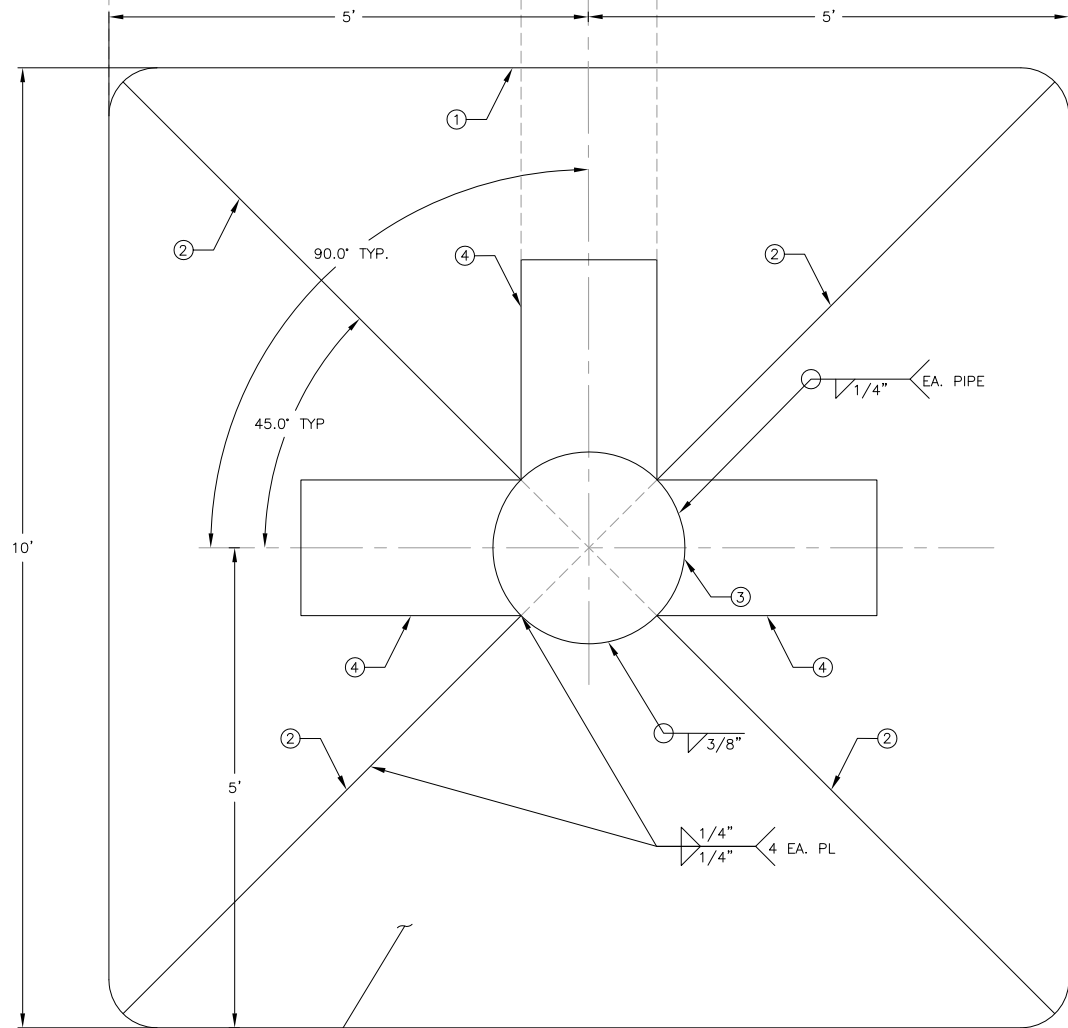
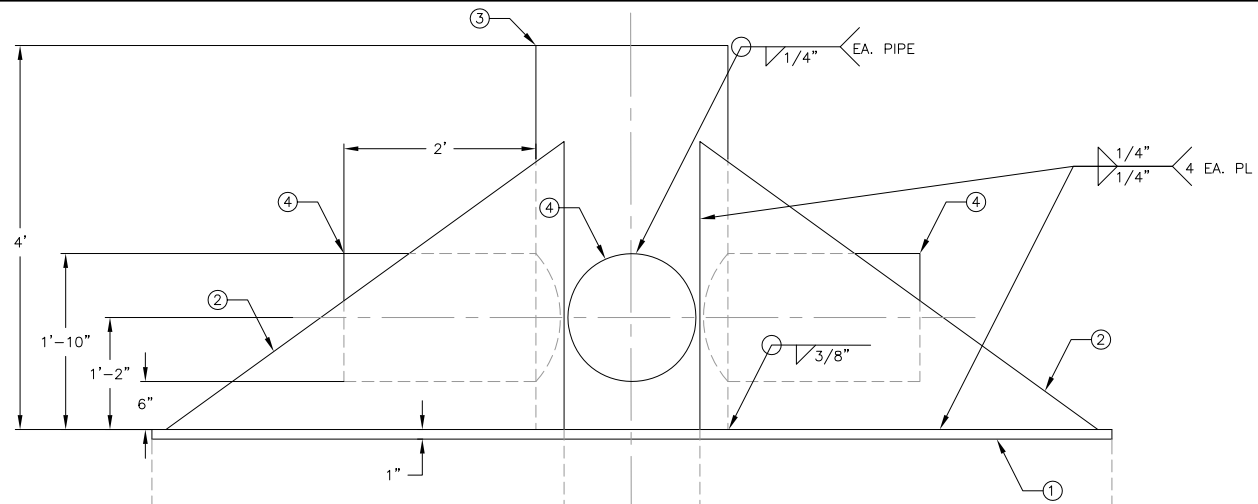
2 STEEL PLATE SUPPORTS  
NTS



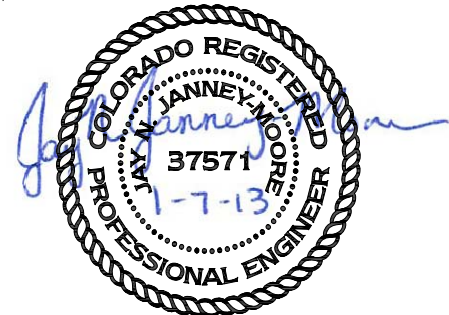
3 STEEL RISER PIPE  
NTS



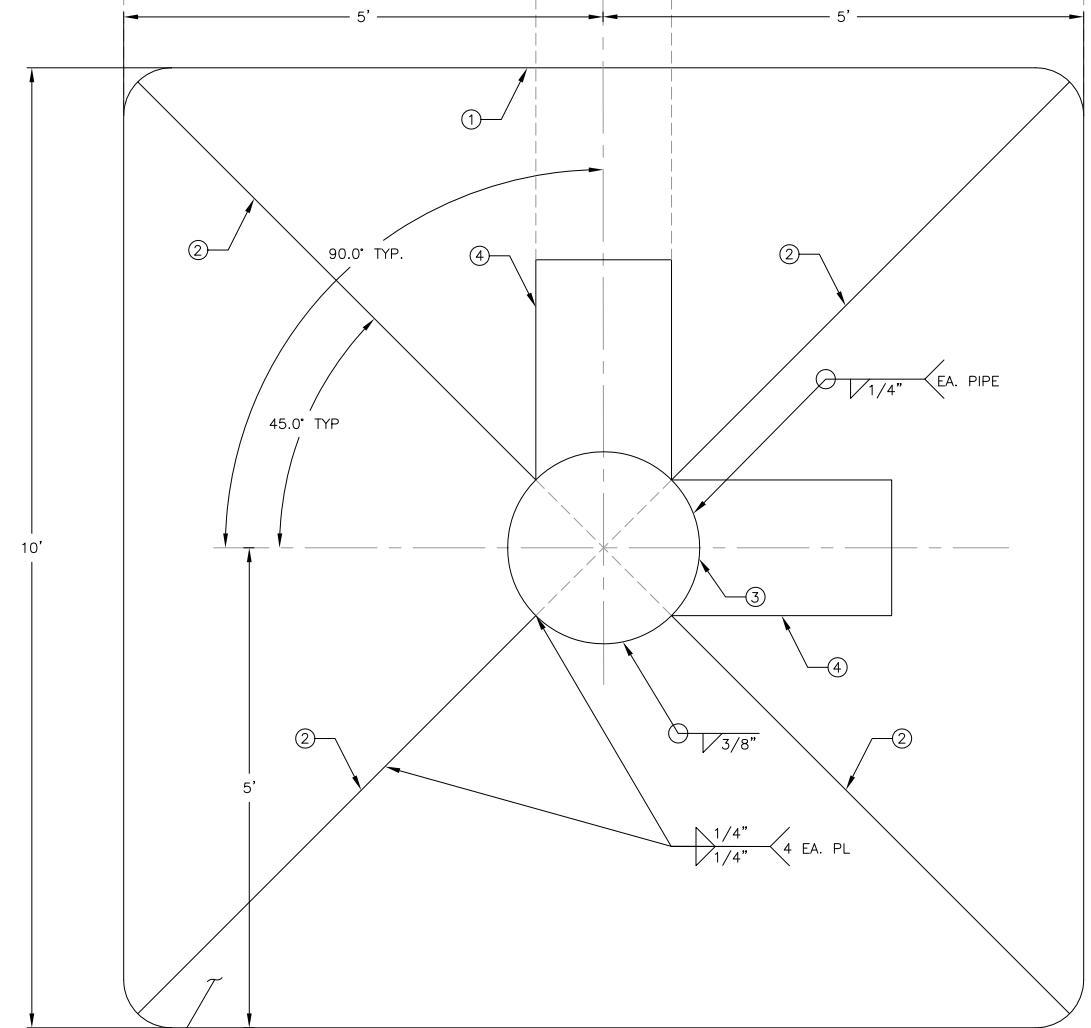
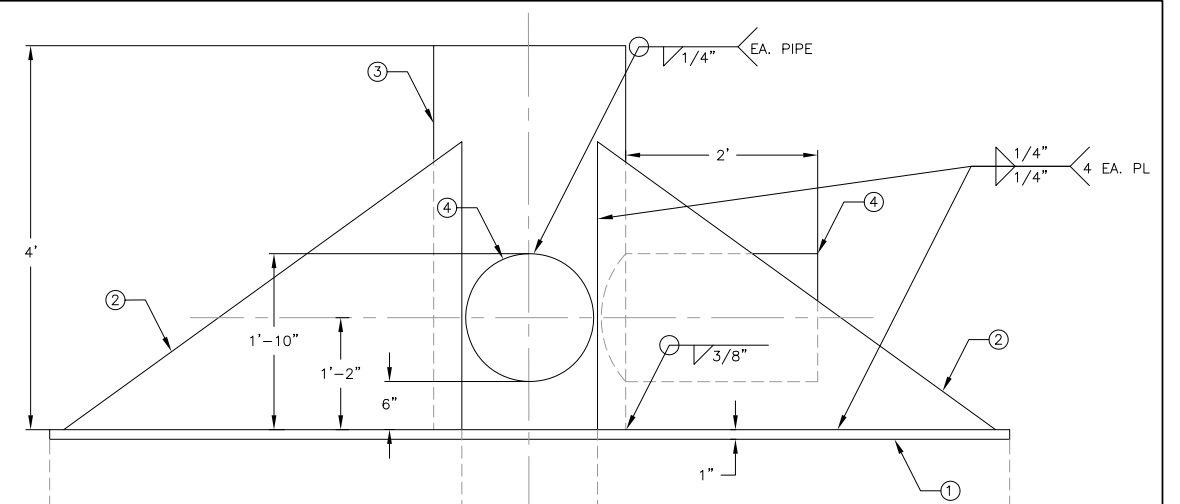
4 STEEL INLET PIPE  
NTS



PL 120X120X4/4  
TYPICAL CENTER PLATE



20 HIGH VOLUME SOLUTION COLLECTION SYSTEM  
A330 VERTICAL RISER PIPE BASE PLATE ASSEMBLY



PL 120X120X4/4  
TYPICAL END PLATE

0	01/07/13	ISSUED FOR CONSTRUCTION	JNM	CMT
DISCLAIMER AMEC EARTH AND ENVIRONMENTAL PRODUCED THE INFORMATION PRESENTED ON THIS DRAWING THROUGH THE USE OF TECHNICAL INFORMATION AND PRACTICAL EXPERIENCE SPECIFIC TO ITS EFFORTS. RECEIVING THIS DRAWING DOES NOT GUARANTEE ANY RIGHTS TO SUCH TECHNICAL INFORMATION AND PRACTICAL EXPERIENCE. ANY ALTERATION OR ADAPTATION OF THE DATA OR CONTENTS OF THIS DRAWING SHALL BE AT USER'S SOLE RISK AND WITHOUT ANY LIABILITY OR LEGAL RESPONSIBILITY TO AMEC EARTH AND ENVIRONMENTAL.				

CLIENT	CRIPPLE CREEK & VICTOR GOLD MINING COMPANY			
PROJECT	SQUAW GULCH VLF			
TITLE	PSSA RISER SECTIONS AND DETAILS SHEET 2 OF 5			
DESIGNED BY	CMT	CHECKED BY	JNM	
DRAWN BY	CMT	APPROVED BY	JNM	
FILENAME	1125GD107	DRAWING No.	A340	REV
				0

