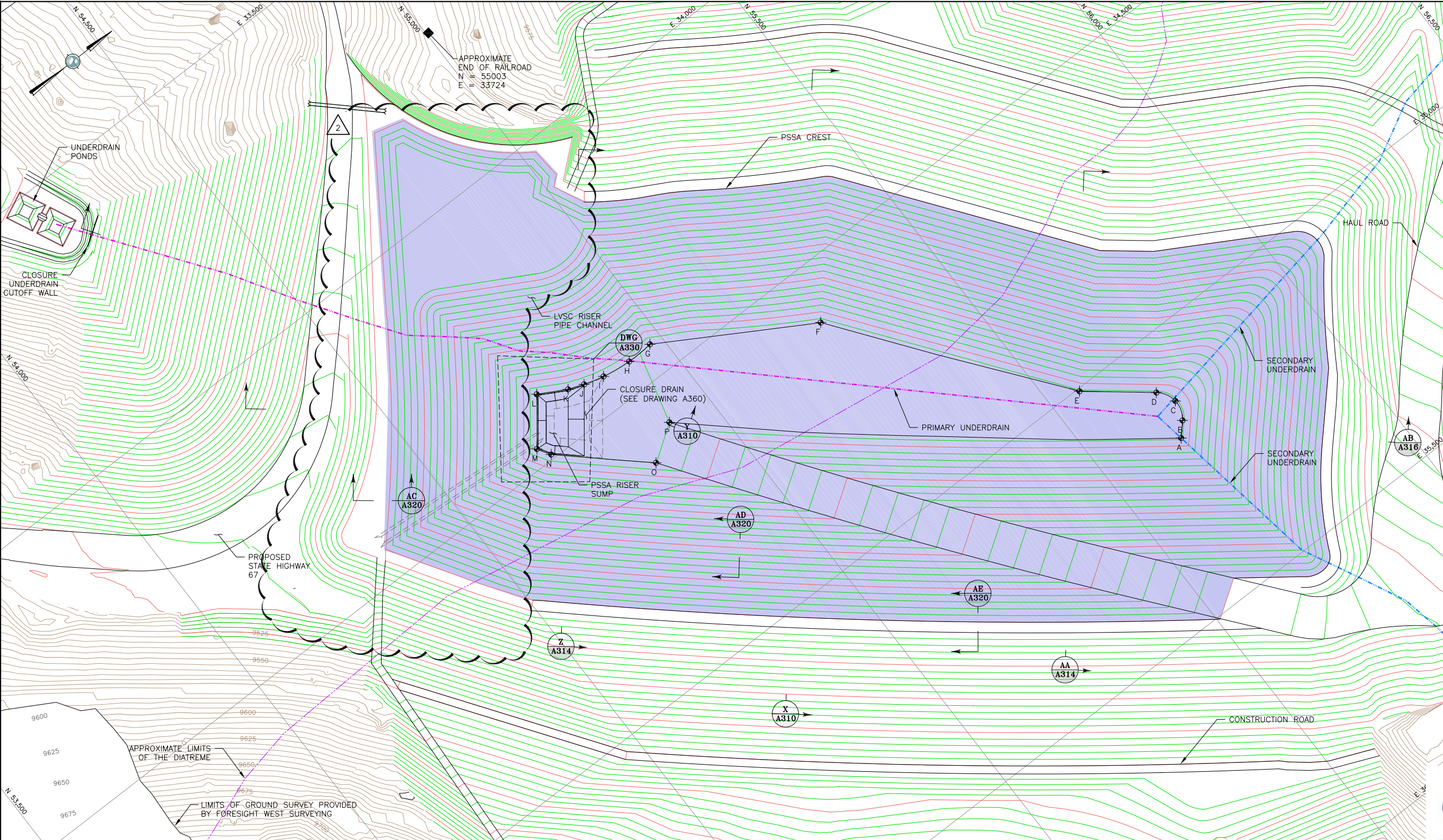
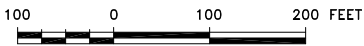


S:\CAD\1125G-Squaw VLF\Cadd\Drawings\FC Drawings\1125GM29.dwg 1/22/2013 8:50 AM



LEGEND:

- EXISTING GROUND SURFACE CONTOUR AND EL, FEET (AERIAL SURVEY)
- PROPOSED GROUND SURFACE CONTOUR AND EL, FEET
- EXISTING GROUND SURFACE CONTOUR AND EL, FEET (LAND SURVEY)
- PSSA GEOMEMBRANE LIMITS (SEE NOTE 1)
- PRIMARY UNDERDRAIN PIPE
- SECONDARY UNDERDRAIN PIPE
- EXISTING UNIMPROVED ROAD/TRAILS
- EXISTING FENCE
- DAYLIGHT LINE
- APPROXIMATE LIMITS OF DIATREME
- EXISTING RAILROAD



NOTES:

- THE GEOMEMBRANE LINERS ON THE PSSA EMBANKMENT ARE AS FOLLOWS:  
100 mil SMOOTH LLDPE ON TOP  
100 mil SINGLE SIDED TEXTURED LLDPE ON BOTTOM
- UNDERDRAIN PUMPBACK PIPES WILL BE PLACED IN 18-INCH DIAMETER HDPE CULVERTS EXTENDING UNDER THE RE-ALIGNED STATE HIGHWAY 67.
- UNDERDRAIN POND HAS BEEN REVISED.
- PSSA EMBANKMENT HAS BEEN WIDENED BY 2'.

REFERENCE:

EXISTING GROUND TOPOGRAPHY WAS CREATED BY COMBINING THE FOLLOWING FILES  
REC'D FROM FORESIGHT WEST SURVEYING, INC.:  
SQUAW GULCH BASE TOPO - PHASE 1 - REVISED.DWG (REC'D MARCH 14, 2010)  
SQUAW GULCH BASE TOPO - PHASE 2.DWG (REC'D APRIL 24, 2010)  
SQUAW GULCH BASE TOPO - PHASE 3.DWG (REC'D MAY 4, 2010)  
CCV TOPO EXPANSION 12-29-10 NORTH AREA.DWG (REC'D JANUARY 13, 2011)  
CCV TOPO EXPANSION 01-28-11 SOUTH AREA.DWG (REC'D JANUARY 28, 2011)  
SH67 TOPO 7-07-11.DWG (REC'D JULY 11, 2011)  
VLF2 TOPO EXPANSION 8-05-11.DWG (REC'D AUGUST 9, 2011)  
09028-COMPOSITE-TOPO MLE LIMITS.DWG (REC'D MAY 28, 2010 FROM CC&V)

2	02/13/14	REVISED ADR PLATFORM RE-ISSUED FOR CONSTRUCTION	MEN CAS
1	06/11/13	REVISED CLOSURE DRAIN RE-ISSUED FOR CONSTRUCTION	MEN CAS
0	01/07/13	ISSUED FOR CONSTRUCTION	JNM CMT

DISCLAIMER

AMEC PRODUCED THE INFORMATION PRESENTED ON THIS DRAWING THROUGH THE USE OF TECHNICAL INFORMATION AND PRACTICAL EXPERIENCE SPECIFIC TO ITS EFFORTS. RECEIVING THIS DRAWING DOES NOT GUARANTEE ANY RIGHTS TO SUCH TECHNICAL INFORMATION AND PRACTICAL EXPERIENCE. ANY ALTERATION OR ADAPTATION OF THE DATA OR CONTENTS OF THIS DRAWING SHALL BE AT USER'S SOLE RISK AND WITHOUT ANY LIABILITY OR LEGAL RESPONSIBILITY TO AMEC.

PSSA SETTING OUT DATA			
POINT	NORTHING	EASTING	ELEVATION
A	55,655.78	35,191.36	9344.00
B	55,678.13	35,166.78	9344.00
C	55,689.82	35,129.64	9344.00
D	55,671.33	35,095.37	9344.00
E	55,558.56	35,004.94	9344.00
F	55,253.30	34,605.17	9342.00
G	54,974.71	34,441.08	9340.00
H	54,924.14	34,442.81	9340.00
I	54,868.89	34,435.59	9340.00
J	54,830.78	34,424.93	0.00
K	54,801.31	34,413.88	9340.00
L	54,749.09	34,385.13	9340.00
M	54,686.35	34,466.69	9340.00
N	54,701.28	34,491.29	9340.00
O	54,847.43	34,624.18	9340.00
P	54,913.82	34,579.44	9340.00



CLIENT		CRIPPLE CREEK & VICTOR GOLD MINING COMPANY			
PROJECT		SQUAW GULCH VLF			
TITLE		PSSA LAYOUT			
DESIGNED BY	JNM	CHECKED BY	MEN		
DRAWN BY	DS	APPROVED BY	CJB		
FILENAME		DRAWING No.	REV		
1125GM29		A300	2		

