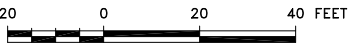


REFERENCE:

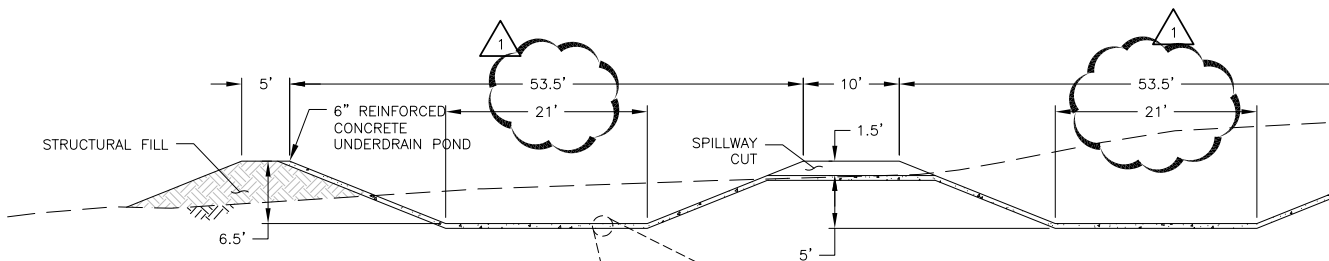
EXISTING GROUND TOPOGRAPHY WAS CREATED BY COMBINING THE FOLLOWING FILES:
SQUAW GULCH BASE TOPO - PHASE 1.DWG
(RECV MARCH 29, 2010 FROM FORESIGHT WEST SURVEYING, INC.)
SQUAW GULCH BASE TOPO - PHASE 2.DWG
(RECV APRIL 26, 2010 FROM FORESIGHT WEST SURVEYING, INC.)
SQUAW GULCH BASE TOPO - PHASE 3.DWG
(RECV MAY 4, 2010 FROM FORESIGHT WEST SURVEYING, INC.)
09028--COMPOSITE--TOPO MLE LIMITS.DWG
(RECV MAY 28, 2010 FROM CC&V)

UNDERDRAIN PONDS PLAN

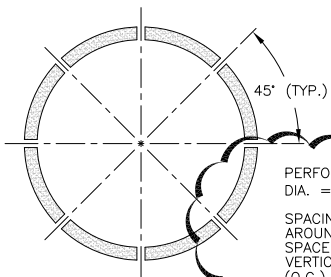
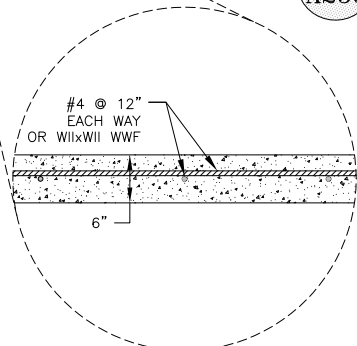


LEGEND:

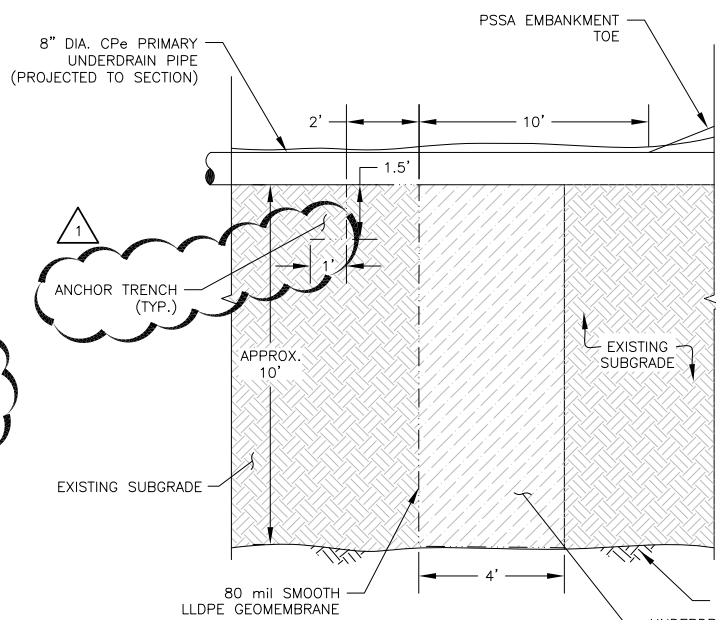
- 5900 EXISTING GROUND SURFACE CONTOUR AND EL, FEET
- 5850 PROPOSED GROUND SURFACE CONTOUR AND EL, FEET
- DAYLIGHT
- EXISTING ROAD/TRAIL
- PRIMARY UNDERDRAIN PIPE



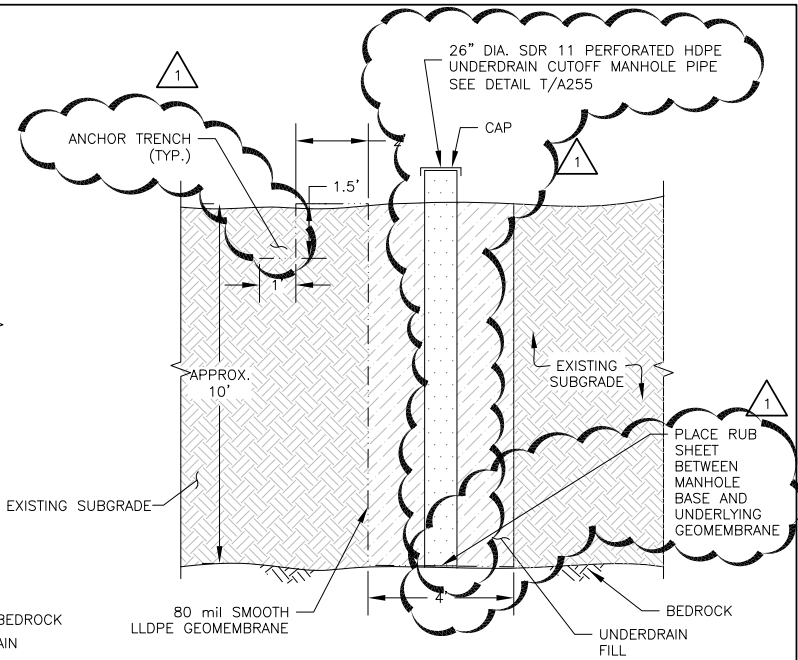
S UNDERDRAIN PONDS SECTION
A255
NTS



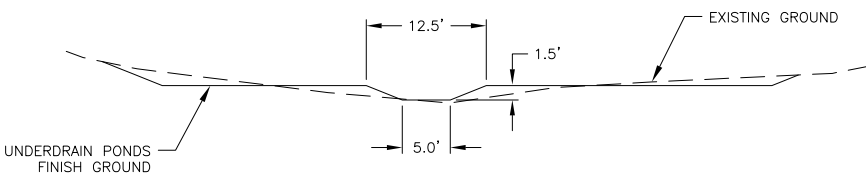
T MANHOLE PERFORATION DETAIL
A255



P UNDERDRAIN CUTOFF DETAIL
A255
NTS



Q UNDERDRAIN CUTOFF MANHOLE DETAIL
A255
NTS



R UNDERDRAIN PONDS SECTION
A255
NTS

UNDERDRAIN CUTOFF
CONTROL POINTS

ID	NORTHING	EASTING	ELEVATION
25	54299.91	33614.03	9258.40
26	54232.09	33670.42	9257.00

NOTES:

- SHAFTS SHALL BE DRILLED PRIOR TO CONSTRUCTION OF THE CLOSURE DRAIN, WITH A MINIMUM DIAMETER OF 8 INCHES.
- SHAFTS SHALL BE EXTEND A MINIMUM OF 10 FEET INTO THE DIATREME
- CLOSURE DRAIN SHALL BE CONSTRUCTED PRIOR TO THE SOIL LINER INSTALLATION IN THE PSSA.
- UNDERDRAIN CONTROL POINTS ARE TOP OF CONCRETE.
- UNDERDRAIN POND HAS BEEN REVISED.
- ALL CAST CONCRETE SHALL BE CDOT CLASS B WITH A MINIMUM 28-DAY COMPRESSIVE STRENGTH OF F'C = 4,500 PSI.
- CHAMFER EXPOSED EDGES OF ALL CONCRETE 1/4", UNLESS NOTED OTHERWISE ON THE PLANS.
- ALL REINFORCING STEEL SHALL CONFORM TO AASHTO M31 OR M322, GRADE 60 DEFORMED.
- THE MINIMUM CONCRETE COVER TO THE FACE OF ANY BAR SHALL BE 2", UNLESS SHOWN OTHERWISE ON THE PLANS.
- ALL WELDED WIRE FABRIC SHALL BE BLACK AND CONFORM TO ASTM A185

UNDERDRAIN PONDS CONTROL POINTS			
ID	NORTHING	EASTING	ELEVATION
1	54165.37	33513.91	9250.00
2	54213.70	33490.96	9250.00
3	54236.65	33539.29	9250.00
4	54240.93	33548.32	9250.00
5	54263.88	33596.65	9250.00
6	54215.56	33619.60	9250.00
7	54192.61	33571.27	9250.00
8	54188.32	33562.24	9250.00
9	54195.92	33540.36	9243.50
10	54187.02	33521.62	9243.50
11	54205.99	33512.61	9243.50
12	54215.00	33531.58	9243.50

UNDERDRAIN PONDS CONTROL POINTS			
ID	NORTHING	EASTING	ELEVATION
13	54233.23	33569.97	9243.50
14	54242.24	33588.94	9243.50
15	54223.27	33597.95	9243.50
16	54214.26	33578.98	9243.50
17	54214.96	33560.66	9250.00
18	54210.67	33551.62	9250.00
19	54221.97	33546.26	9250.00
20	54226.26	33555.29	9250.00
21	54216.97	33544.48	9248.50
22	54212.45	33546.63	9248.50
23	54224.48	33560.29	9248.50
24	54219.96	33562.43	9248.50

1	03/14/13	RE-ISSUED FOR CONSTRUCTION	MEN	JTC
0	01/07/13	ISSUED FOR CONSTRUCTION	JNM	CMT

DISCLAIMER

AMEC PRODUCED THE INFORMATION PRESENTED ON THIS DRAWING THROUGH THE USE OF TECHNICAL INFORMATION AND PRACTICAL EXPERIENCE SPECIFIC TO ITS EFFORTS. RECEIVING THIS DRAWING DOES NOT GUARANTEE ANY RIGHTS TO SUCH TECHNICAL INFORMATION AND PRACTICAL EXPERIENCE. ANY ALTERATION OR ADAPTATION OF THE DATA OR CONTENTS OF THIS DRAWING SHALL BE AT USER'S SOLE RISK AND WITHOUT ANY LIABILITY OR LEGAL RESPONSIBILITY TO AMEC.

CLIENT		CRIPPLE CREEK & VICTOR GOLD MINING COMPANY			
PROJECT		SQUAW GULCH VLF			
TITLE		UNDERDRAIN DETAILS SHEET 2 OF 2			
DESIGNED BY	JNM	CHECKED BY	JNM		
DRAWN BY	DS	APPROVED BY	KFM		
FILENAME		DRAWING No.		REV	
1125GD25		A255		1	

