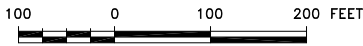
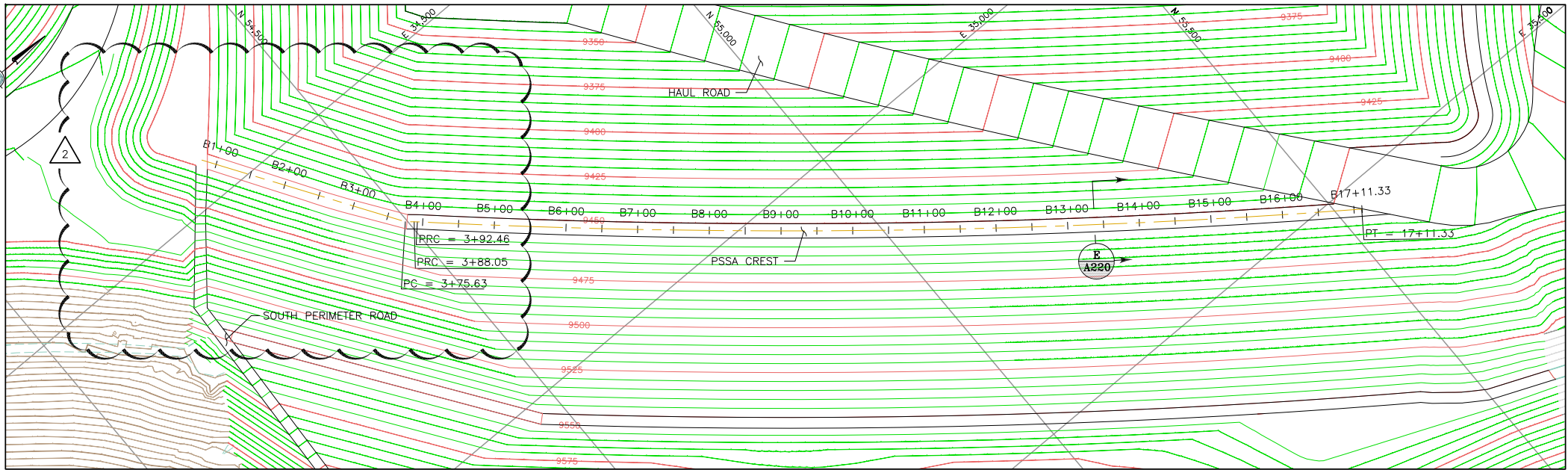


S:\CAD\1125G-Squaw VLF\cadd\CADD DRAWINGS\IFC Drawings\c249-1125GP84.dwg 1/21/2013 2:41 PM

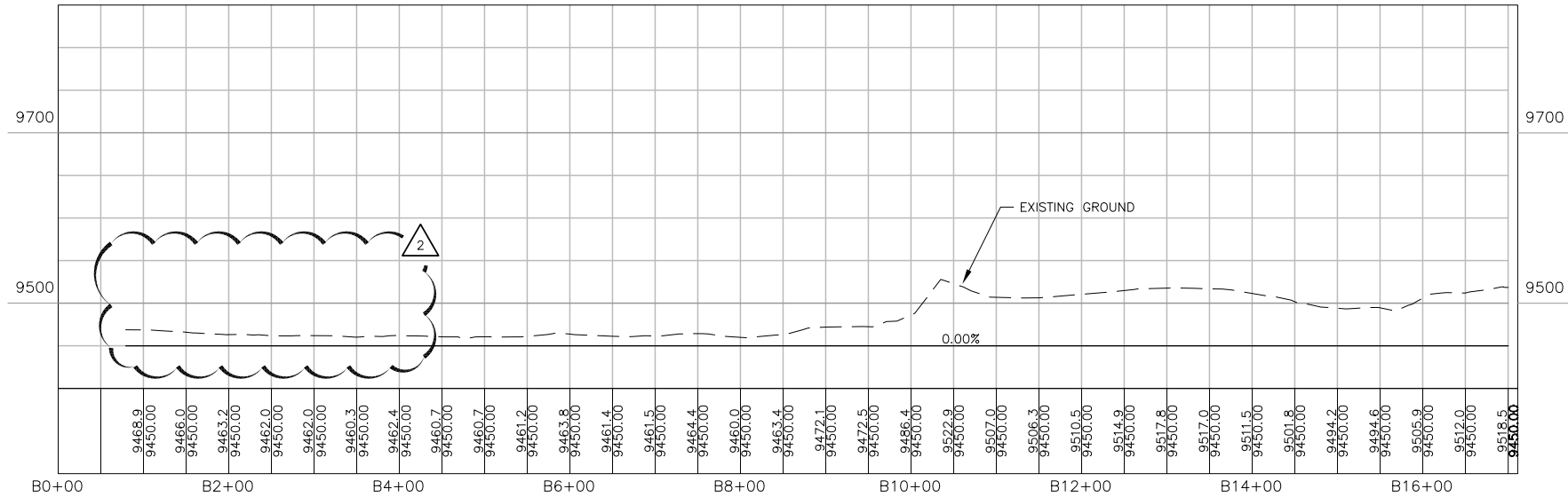


LEGEND:

- EXISTING GROUND SURFACE CONTOUR AND EL. FEET (LAND SURVEY)
- PROPOSED GROUND SURFACE CONTOUR AND EL. FEET
- DAYLIGHT LINE
- CENTERLINE LINE
- B6+00
- 9450 ELEVATION CONSTRUCTION ROAD CENTERLINE

PSSA CREST

	STATION	NORTHING	EASTING	DELTA (D-M-S)	RADIUS (FT)	LENGTH (FT)
PI	B0+79.25	54335.13	34443.65			
PC	B3+75.63	54497.34	34691.68			
PRC	B3+88.05	54506.72	34699.82	04-44-48	150	12.43
PRC	B3+92.46	54510.06	34702.69	04-12-33	60	4.41
PT	B17+11.33	55531.05	35536.21	07-08-43	10575.43	1318.87



REFERENCE:

EXISTING GROUND TOPOGRAPHY WAS CREATED BY COMBINING THE FOLLOWING FILES
REC'D FROM FORESIGHT WEST SURVEYING, INC.:
SQUAW GULCH BASE TOPO - PHASE 1 - REVISED.DWG
(REV. MARCH 14, 2010)
SQUAW GULCH BASE TOPO - PHASE 2.DWG
(REV. APRIL 24, 2010)
SQUAW GULCH BASE TOPO - PHASE 3.DWG
(REV. MAY 4, 2010)
CCV TOPO EXPANSION 12-29-10 NORTH AREA.DWG
(REV. JANUARY 13, 2011)
CCV TOPO EXPANSION 01-28-11 SOUTH AREA.DWG
(REV. JANUARY 28, 2011)
SH67 TOPO 7-07-11.DWG
(REV. JULY 11, 2011)
VLF2 TOPO EXPANSION 8-05-11.DWG
(REV. AUGUST 9, 2011)
09028-COMPOSITE-TOPO MLE LIMITS.DWG
(REV. MAY 28, 2010 FROM CC&V)

2	02/13/14	REVISED BENCH B / RE-ISSUED FOR CONSTRUCTION	MEN PBS
1	08/15/13	REVISED HAUL ROAD / RE-ISSUED FOR CONSTRUCTION	MEN PBS
0	01/07/13	ISSUED FOR CONSTRUCTION	JNM CMT

DISCLAIMER

AMEC PRODUCED THE INFORMATION PRESENTED ON THIS DRAWING THROUGH THE USE OF TECHNICAL INFORMATION AND PRACTICAL EXPERIENCE SPECIFIC TO ITS EFFORTS. RECEIVING THIS DRAWING DOES NOT GUARANTEE ANY RIGHTS TO SUCH TECHNICAL INFORMATION AND PRACTICAL EXPERIENCE. ANY ALTERATION OR ADAPTATION OF THE DATA OR CONTENTS OF THIS DRAWING SHALL BE AT USER'S SOLE RISK AND WITHOUT ANY LIABILITY OR LEGAL RESPONSIBILITY TO AMEC.



CLIENT	CRIPPLE CREEK & VICTOR GOLD MINING COMPANY			
PROJECT	SQUAW GULCH VLF			
TITLE	PSSA CREST PLAN AND PROFILE			
DESIGNED BY	JNM	CHECKED BY	JNM	
DRAWN BY	ACW	APPROVED BY	JNM	
FILENAME	1125GP84	DRAWING No.	A249	REV 2

