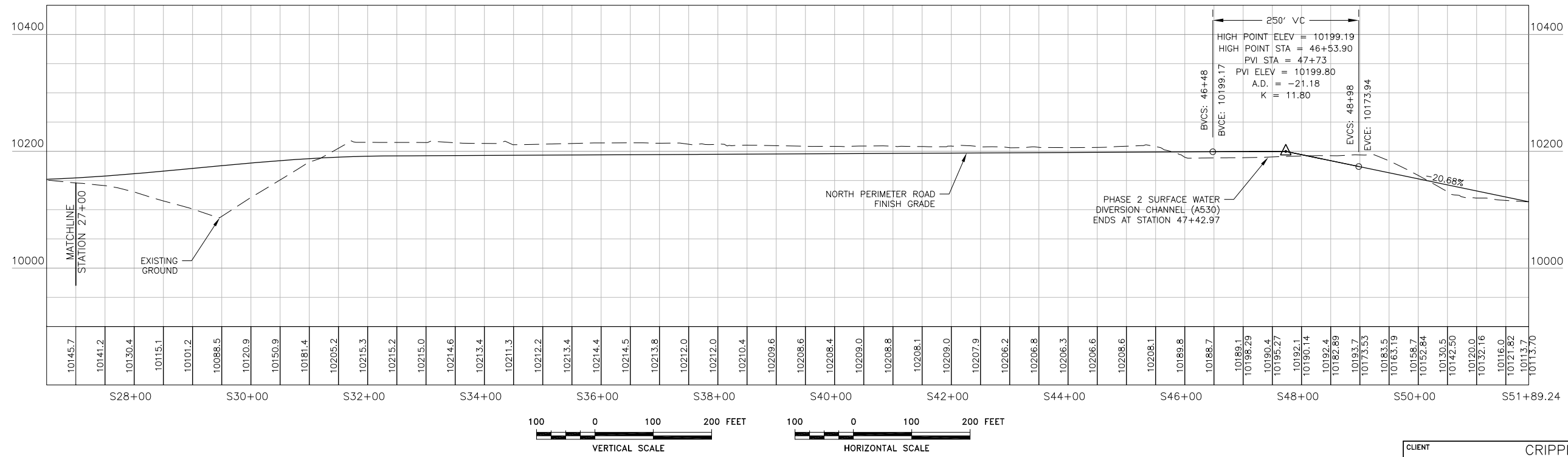


- LEGEND:**
- EXISTING GROUND SURFACE CONTOUR AND EL, FEET (LAND SURVEY)
 - PROPOSED GROUND SURFACE CONTOUR AND EL. FEET
 - DAYLIGHT LINE
 - CENTERLINE LINE
 - NORTH PERIMETER ROAD CENTERLINE
 - EXISTING UNIMPROVED ROAD/TRAILS

- NOTE:**
- REFER TO PHASE 2 SURFACE WATER DIVERSION CHANNEL PLAN AND PROFILE SHEETS ON DRAWINGS A520 AND A530 FOR HORIZONTAL AND VERTICAL ALIGNMENT DATA.

NORTH PERIMETER ROAD					
	STATION	NORTHING	EASTING	DELTA (D-M-S)	RADIUS (FT)
PT	S46+74.45	56819.44	38125.69		
PC	S47+73	56732.66	38172.41		
				62-21-58	382.3972
PT	S51+89.24	56337.18	38152.4		



REFERENCE:

EXISTING GROUND TOPOGRAPHY WAS CREATED BY COMBINING THE FOLLOWING FILES
RCV FROM FORESIGHT WEST SURVEYING, INC.:
SQUAW GULCH BASE TOPO - PHASE 1 - REVISED.DWG
(RCV MARCH 14, 2010)
SQUAW GULCH BASE TOPO - PHASE 2.DWG
(RCV APRIL 24, 2010)
SQUAW GULCH BASE TOPO - PHASE 3.DWG
(RCV MAY 4, 2010)
CCV TOPO EXPANSION 12-29-10 NORTH AREA.DWG
(RCV JANUARY 13, 2011)
CCV TOPO EXPANSION 01-28-11 SOUTH AREA.DWG
(RCV JANUARY 28, 2011)
SH67 TOPO 7-07-11.DWG
(RCV JULY 11, 2011)
VLF2 TOPO EXPANSION 8-05-11.DWG
(RCV AUGUST 9, 2011)
09028-COMPOSITE-TOPO MLE LIMITS.DWG
(RCV MAY 28, 2010 FROM CC&V)

1	08/15/13	REVISED HAUL ROAD / RE-ISSUED FOR CONSTRUCTION	MEN
0	01/07/13	ISSUED FOR CONSTRUCTION	PBS
DISCLAIMER			
AMEC PRODUCED THE INFORMATION PRESENTED ON THIS DRAWING THROUGH THE USE OF TECHNICAL INFORMATION AND PRACTICAL EXPERIENCE SPECIFIC TO ITS EFFORTS. RECEIVING THIS DRAWING DOES NOT GUARANTEE ANY RIGHTS TO SUCH TECHNICAL INFORMATION AND PRACTICAL EXPERIENCE. ANY ALTERATION OR ADAPTATION OF THE DATA OR CONTENTS OF THIS DRAWING SHALL BE AT USER'S SOLE RISK AND WITHOUT ANY LIABILITY OR LEGAL RESPONSIBILITY TO AMEC.			

CLIENT	CRIPPLE CREEK & VICTOR GOLD MINING COMPANY		
PROJECT	SQUAW GULCH VLF		
TITLE	NORTH PERIMETER ROAD PLAN AND PROFILE SHEET 2 OF 2		
DESIGNED BY	JNM	CHECKED BY	JNM
DRAWN BY	CMT	APPROVED BY	KFM
FILENAME	1125GP87	DRAWING No.	A248
		REV	1

