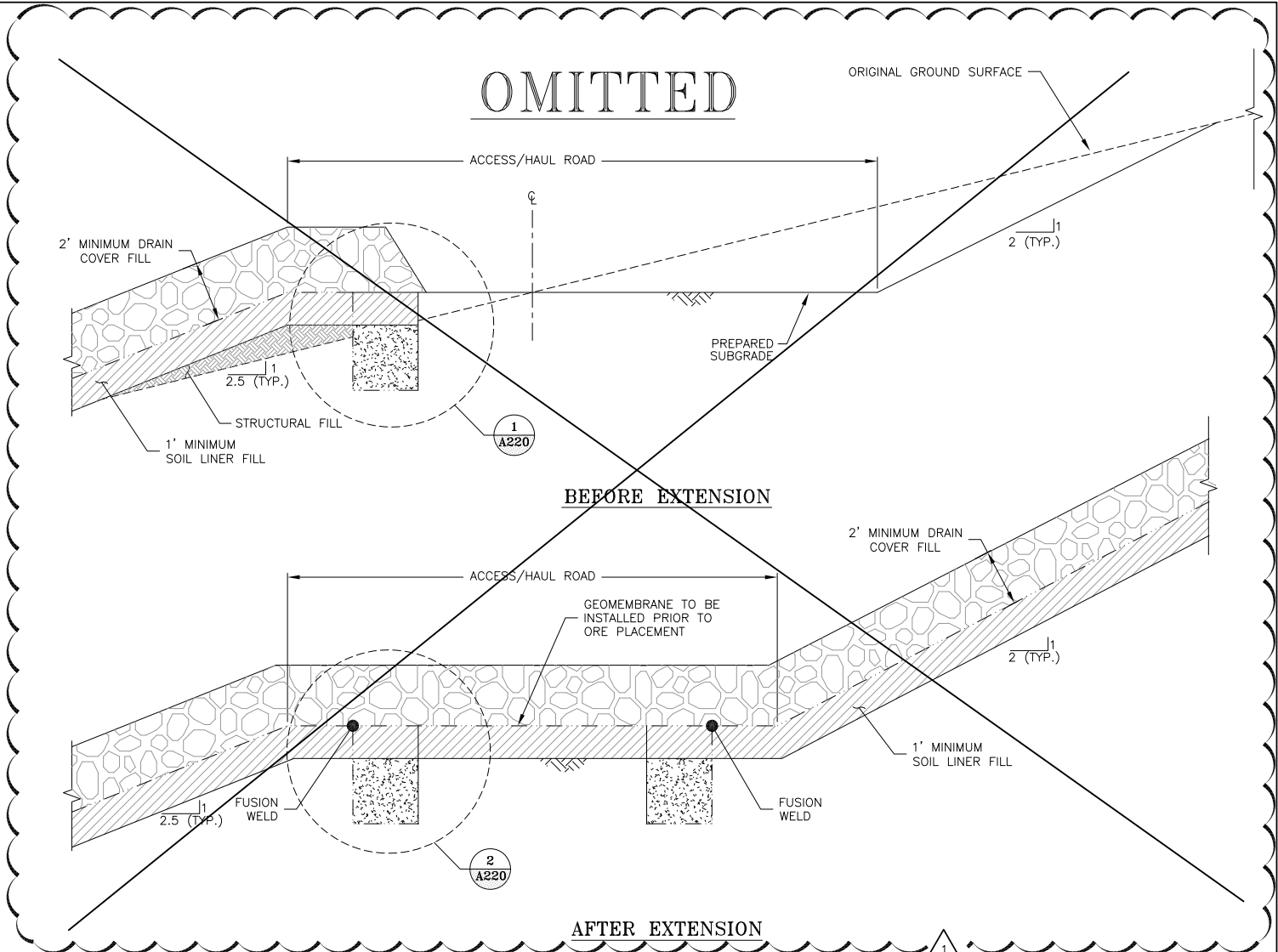
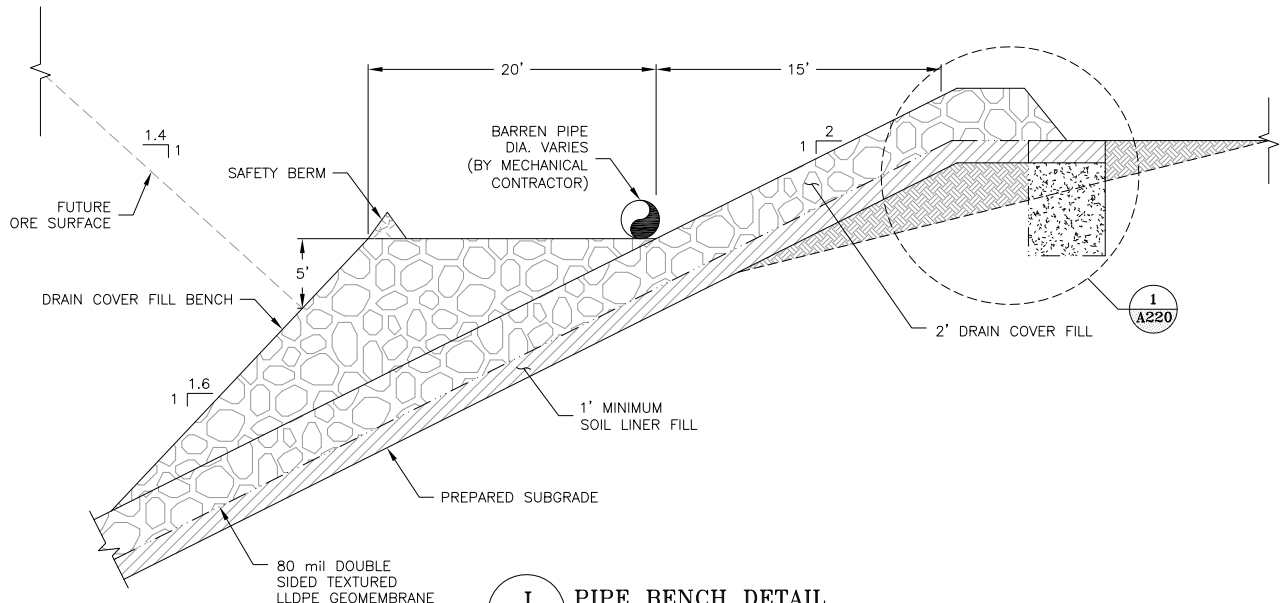


**G**  
**A200** **G**  
**A210** **OVERBURDEN STORAGE AREA SLOPE PREPARATION**  
(AS DETERMINED BY ENGINEER, SEE NOTE 1)  
NTS



**H**  
**A200** **H**  
**A210** **INTERIM ANCHOR TRENCH**  
NTS



**J**  
**A200** **PIPE BENCH DETAIL**  
(AS DETERMINED BY ENGINEER)  
NTS

**NOTES:**

1. OVERBURDEN STORAGE AREA SLOPE PREPARATION ALTERNATIVE TO BE DETERMINED BY ENGINEER.

|   |          |  |     |     |
|---|----------|--|-----|-----|
| 1 | 08/15/13 | REVISED HAUL ROAD / RE-ISSUED FOR CONSTRUCTION | MEN | CAS |
| 0 | 01/07/13 | ISSUED FOR CONSTRUCTION                        | JNM | CMT |

**DISCLAIMER**  
AMEC PRODUCED THE INFORMATION PRESENTED ON THIS DRAWING THROUGH THE USE OF TECHNICAL INFORMATION AND PRACTICAL EXPERIENCE SPECIFIC TO ITS EFFORTS. RECEIVING THIS DRAWING DOES NOT GUARANTEE ANY RIGHTS TO SUCH TECHNICAL INFORMATION AND PRACTICAL EXPERIENCE. ANY ALTERATION OR ADAPTATION OF THE DATA OR CONTENTS OF THIS DRAWING SHALL BE AT USER'S SOLE RISK AND WITHOUT ANY LIABILITY OR LEGAL RESPONSIBILITY TO AMEC.

|             |   |             |      |       |
|-------------|---|-------------|------|-------|
| CLIENT      | CRIPPLE CREEK & VICTOR GOLD MINING COMPANY              |             |      |       |
| PROJECT     | SQUAW GULCH VLF   |             |      |       |
| TITLE       | VALLEY LEACH FACILITY SECTIONS AND DETAILS SHEET 2 OF 2 |             |      |       |
| DESIGNED BY | JNM   | CHECKED BY  | JNM  |       |
| DRAWN BY    | DS  | APPROVED BY | KFM  |       |
| FILENAME    | 1125GD60  | DRAWING No. | A230 | REV 1 |

