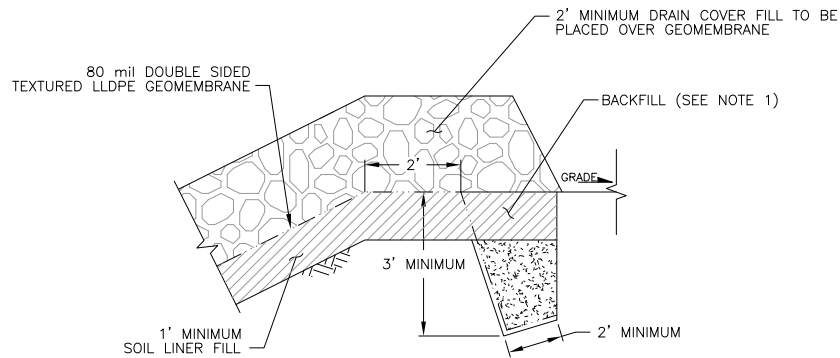
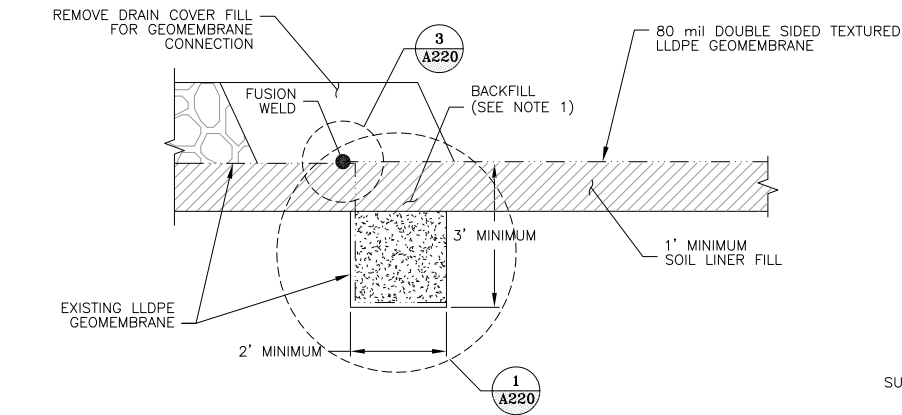


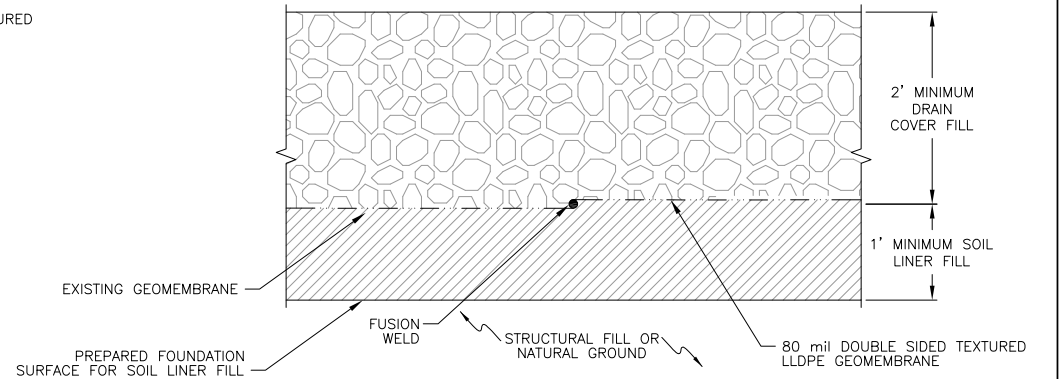
S:\CADD\1125G-Squaw VLF\Cadd\Drawings\FC Drawings\A220-a220-1125GD23.dwg 1/21/2013 2:41 PM



1 1 1 ORE STORAGE AREA ANCHOR TRENCH
A220 A230 A550 NTS

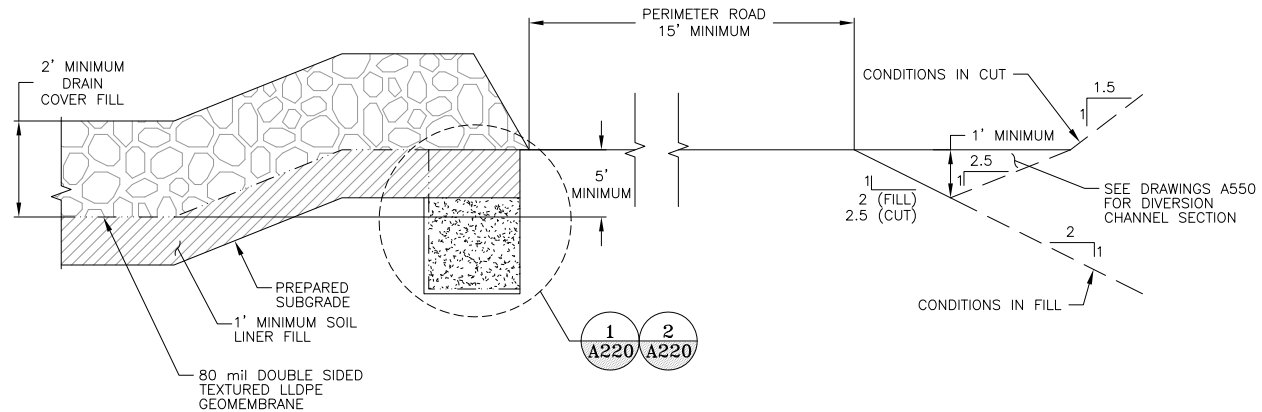
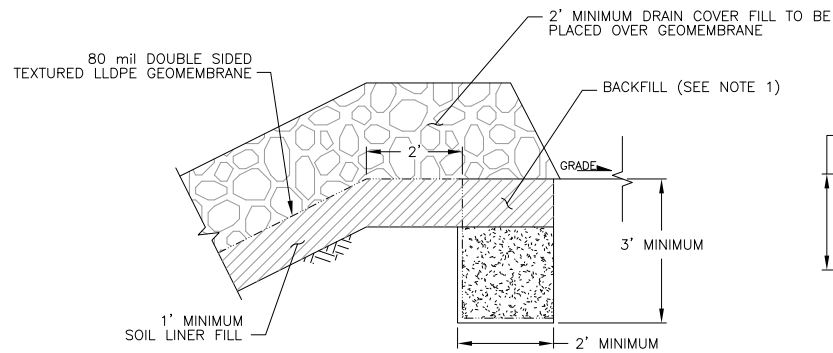


2 2 2 PHASED LINER CONNECTION SECTION
A220 A230 A240 NTS

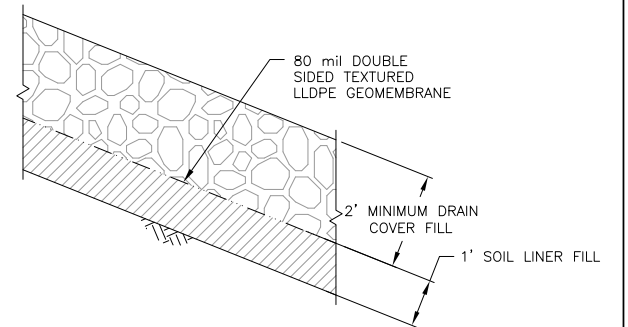


3 3 FUSION WELD DETAIL AFTER OPTIONAL
A220 A260 REMOVAL OF INTERIM ANCHOR TRENCH
NTS

OR



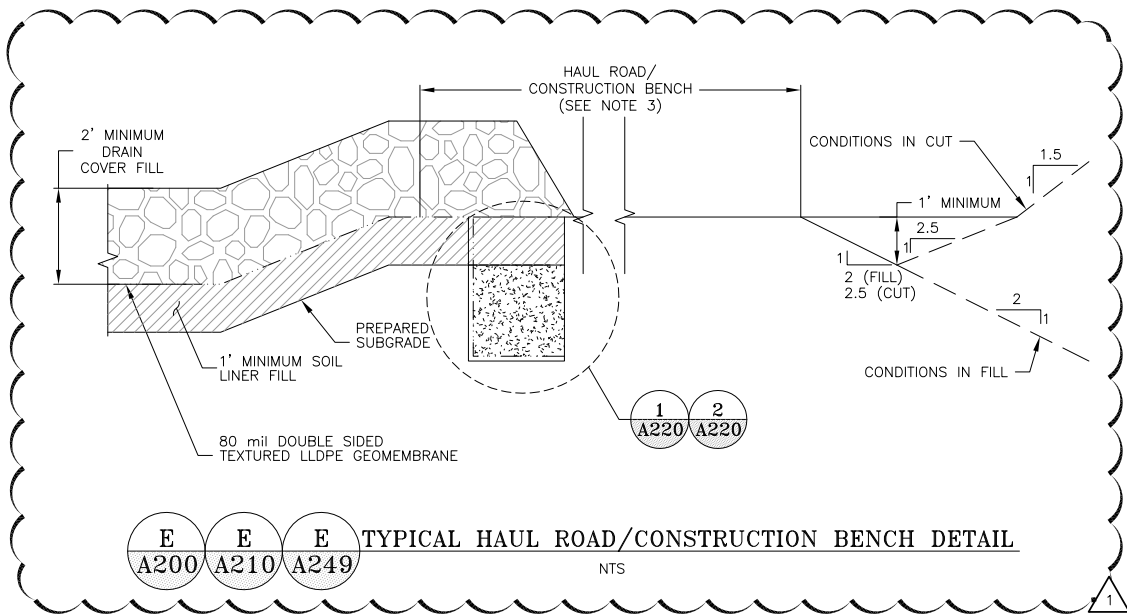
D D D D D D TYPICAL PERIMETER DETAIL
A200 A210 A244 A245 A246 A248 NTS



F F OSA LINER SECTION
A200 A210 NTS

NOTES:

1. COMPACTED SOIL LINER FILL OR OTHER FILL APPROVED BY THE MANAGER TO BACKFILL ANCHOR TRENCH. ANCHOR TRENCHES INTERNAL TO THE VLF WILL BE BACKFILLED WITH SOIL LINER FILL FOR THE UPPER 1FT (MIN.).
2. REFER TO PROJECT SPECIFICATIONS REGARDING MINIMUM DRAIN COVER FILL DEPTHS FOR WORKING OVER GEOSYNTHETICS AND PIPING WITH RUBBER TIRE OR TRACK MOUNTED EQUIPMENT.
3. CONSTRUCTION BENCH WIDTH IS 15FT.



E E E TYPICAL HAUL ROAD/CONSTRUCTION BENCH DETAIL
A200 A210 A249 NTS



1	08/15/13	REVISED NOTES -- RE-ISSUED FOR CONSTRUCTION	MEN	PBS
0	01/07/13	ISSUED FOR CONSTRUCTION	JNM	CMT

DISCLAIMER
AMEC PRODUCED THE INFORMATION PRESENTED ON THIS DRAWING THROUGH THE USE OF TECHNICAL INFORMATION AND PRACTICAL EXPERIENCE SPECIFIC TO ITS EFFORTS. RECEIVING THIS DRAWING DOES NOT GUARANTEE ANY RIGHTS TO SUCH TECHNICAL INFORMATION AND PRACTICAL EXPERIENCE. ANY ALTERATION OR ADAPTATION OF THE DATA OR CONTENTS OF THIS DRAWING SHALL BE AT USER'S SOLE RISK AND WITHOUT ANY LIABILITY OR LEGAL RESPONSIBILITY TO AMEC.

CLIENT	CRIPPLE CREEK & VICTOR GOLD MINING COMPANY			
PROJECT	SQUAW GULCH VLF			
TITLE	VALLEY LEACH FACILITY SECTIONS AND DETAILS SHEET 1 OF 2			
DESIGNED BY	JNM	CHECKED BY	JNM	
DRAWN BY	DS	APPROVED BY	KFM	
FILENAME	1125GD23	DRAWING No.	A220	REV 1

