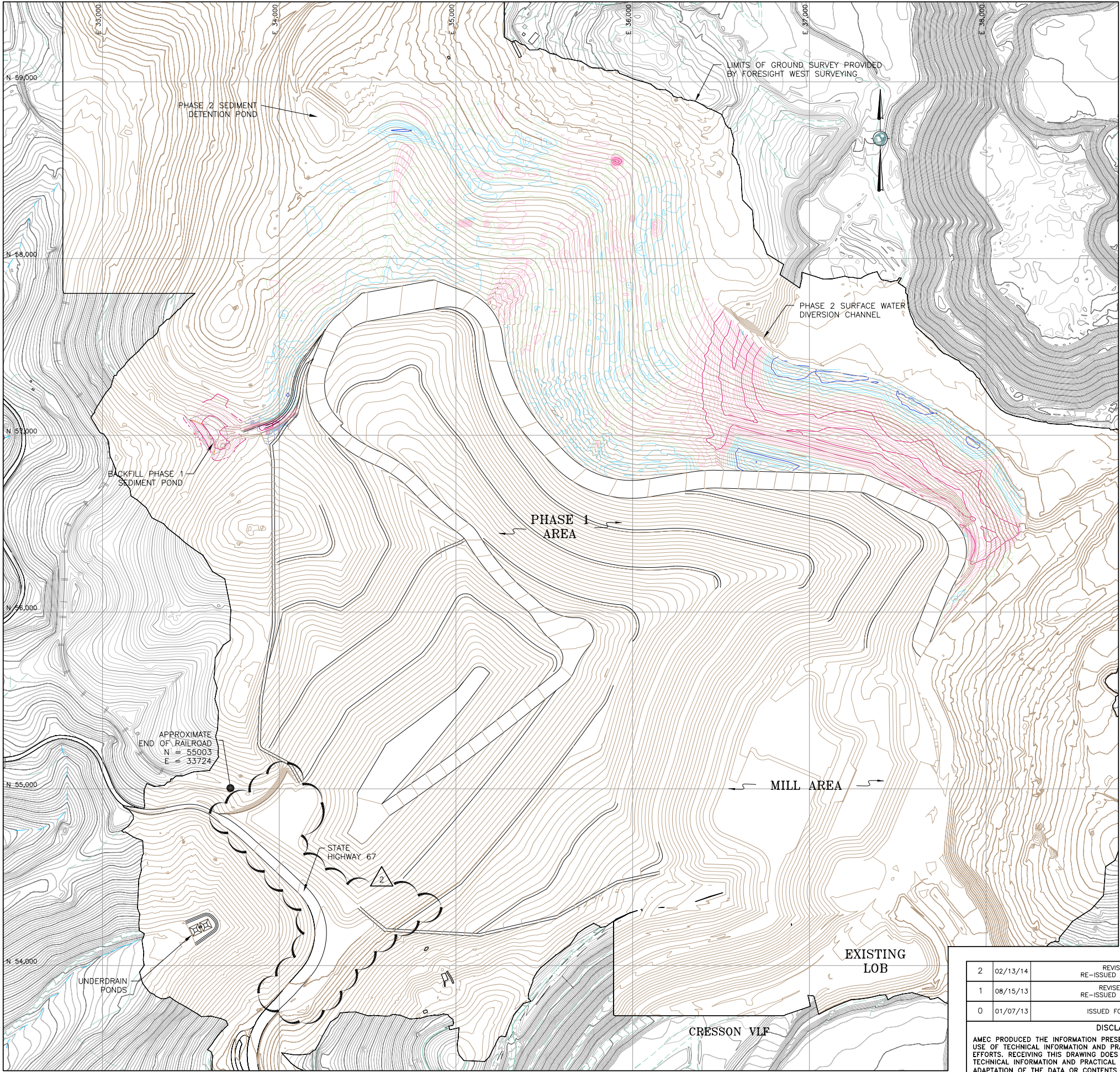


S:\CAD\1125G-Squaw VLF\cadd\Drawings\FC Drawings\A211.dwg 1/21/2013 2:41 PM

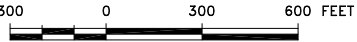


LEGEND:

- EXISTING GROUND SURFACE CONTOUR AND EL, FEET (AERIAL SURVEY)
- EXISTING GROUND SURFACE CONTOUR AND EL, FEET (LAND SURVEY)
- MILL PLATFORM GROUND SURFACE CONTOUR EL, FEET
- ISOPACH CUT CONTOURS AND EL, FEET
- ISOPACH FILL CONTOURS AND EL, FEET
- DAYLIGHT LINE
- EXISTING UNIMPROVED ROAD/TRAILS
- EXISTING DRAINAGES
- STATE HIGHWAY 67
- EXISTING BUILDING

NOTE:

- REMOVED EXISTING UTILITIES FROM DRAWING.
- UPDATED EXISTING GROUND TO INCLUDE MILL PLATFORM.
- UNDERDRAIN POND AND PHASE 2 SEDIMENT POND HAVE BEEN REVISED.
- PHASE 2 SURFACE WATER DIVERSION CHANNEL AND SEDIMENT DETENTION POND WILL BE BUILT WITH PHASE 1.
- PSSA EMBANKMENT HAS BEEN WIDENED BY 2'.



REFERENCE:

EXISTING GROUND TOPOGRAPHY WAS CREATED BY COMBINING THE FOLLOWING FILES
REC'D FROM FORESIGHT WEST SURVEYING, INC.:
SQUAW GULCH BASE TOPO - PHASE 1 - REVISED.DWG
(RECV MARCH 14, 2010)
SQUAW GULCH BASE TOPO - PHASE 2.DWG
(RECV APRIL 24, 2010)
SQUAW GULCH BASE TOPO - PHASE 3.DWG
(RECV MAY 4, 2010)
CCV TOPO EXPANSION 12-28-10 NORTH AREA.DWG
(RECV JANUARY 13, 2011)
CCV TOPO EXPANSION 01-28-11 SOUTH AREA.DWG
(RECV JANUARY 28, 2011)
SH67 TOPO 7-07-11.DWG
(RECV JULY 11, 2011)
VLF2 TOPO EXPANSION 8-05-11.DWG
(RECV AUGUST 9, 2011)
09028-COMPOSITE-TOPO MLE LIMITS.DWG
(RECV MAY 28, 2010 FROM CC&V)



| | | | | |
|---|----------|-------------------------------------------------|-----|-----|
| 2 | 02/13/14 | REVISED ADR SITE RE-ISSUED FOR CONSTRUCTION | MEN | CAS |
| 1 | 08/15/13 | REVISED HAUL ROAD RE-ISSUED FOR CONSTRUCTION | MEN | CAS |
| 0 | 01/07/13 | ISSUED FOR CONSTRUCTION | JNM | CMT |

DISCLAIMER
AMEC PRODUCED THE INFORMATION PRESENTED ON THIS DRAWING THROUGH THE USE OF TECHNICAL INFORMATION AND PRACTICAL EXPERIENCE SPECIFIC TO ITS EFFORTS. RECEIVING THIS DRAWING DOES NOT GUARANTEE ANY RIGHTS TO SUCH TECHNICAL INFORMATION AND PRACTICAL EXPERIENCE. ANY ALTERATION OR ADAPTATION OF THE DATA OR CONTENTS OF THIS DRAWING SHALL BE AT USER'S SOLE RISK AND WITHOUT ANY LIABILITY OR LEGAL RESPONSIBILITY TO AMEC.

| | | | | |
|-------------|------------------------------------------------|-------------|------|-------|
| CLIENT | CRIPPLE CREEK & VICTOR GOLD MINING COMPANY | | | |
| PROJECT | SQUAW GULCH VLF | | | |
| TITLE | PHASE 2 SQUAW GULCH GRADING PLAN ISOPACH | | | |
| DESIGNED BY | CMT | CHECKED BY | MEN | |
| DRAWN BY | CMT | APPROVED BY | CJB | |
| FILENAME | 1125GP93 | DRAWING No. | A211 | REV 2 |