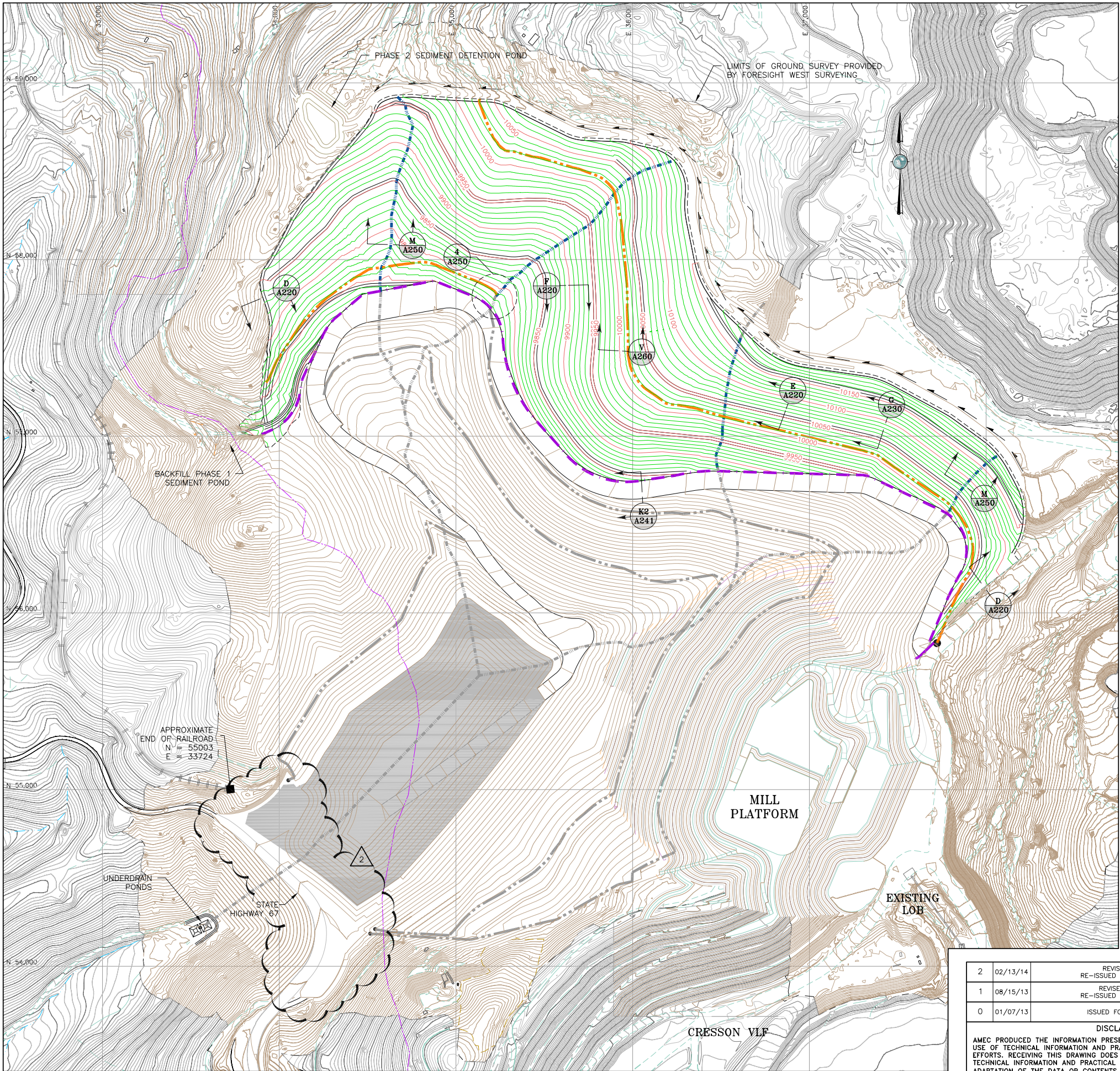


S:\CAD\1125G-Squaw VLF\cadd\Drawings\FC Drawings\A210-a210-1125GM56.dwg 1/21/2013 2:41 PM

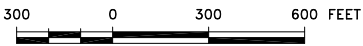


LEGEND:

- 9200 EXISTING GROUND SURFACE CONTOUR AND EL, FEET (AERIAL SURVEY)
- 9200 EXISTING GROUND SURFACE CONTOUR AND EL, FEET (LAND SURVEY)
- 100 MILL PLATFORM GROUND SURFACE CONTOUR EL, FEET
- 9200 PROPOSED GROUND SURFACE CONTOUR EL, FEET (PHASE 1)
- 9200 PROPOSED GROUND SURFACE CONTOUR EL, FEET (PHASE 2)
- PRIMARY UNDERDRAIN PIPE
- SECONDARY UNDERDRAIN PIPE (PHASE 1)
- SECONDARY UNDERDRAIN PIPE (PHASE 2)
- LEAK DETECTION TRENCH (PHASE 1)
- LEAK DETECTION TRENCH (PHASE 2)
- DAYLIGHT LINE
- LIMIT OF PHASE 1 REGRADE
- APPROXIMATE LIMITS OF DIATREME
- EXISTING UNIMPROVED ROAD/TRAILS
- EXISTING DRAINAGES
- EXISTING GEOMEMBRANE LIMITS
- RAILROAD ALIGNMENT
- UNDERDRAIN PUMPBACK PIPE
- STATE HIGHWAY 67
- EXISTING BUILDING
- DIRECTION OF SURFACE WATER FLOW
- LIMITS OF PSSA
- LEAK DETECTION SUMP

NOTE:

- PROPOSED CONTOURS REPRESENT TOP OF SOIL LINER FILL.
- REMOVED EXISTING UTILITIES FROM DRAWING AND UNDERDRAIN PUMPBACK PIPE.
- UPDATED EXISTING GROUND TO INCLUDE MILL PLATFORM.
- UNDERDRAIN POND AND PHASE 2 SEDIMENT POND HAVE BEEN REVISED.
- PHASE 2 SURFACE WATER DIVERSION CHANNEL AND SEDIMENT DETENTION POND WILL BE BUILT WITH PHASE 1.
- PSSA EMBANKMENT HAS BEEN WIDENED BY 2'.



REFERENCE:

EXISTING GROUND TOPOGRAPHY WAS CREATED BY COMBINING THE FOLLOWING FILES
REC'D FROM FORESIGHT WEST SURVEYING, INC.:
SQUAW GULCH BASE TOPO - PHASE 1 - REVISED.DWG
(REV. MARCH 14, 2010)
SQUAW GULCH BASE TOPO - PHASE 2.DWG
(REV. APRIL 24, 2010)
SQUAW GULCH BASE TOPO - PHASE 3.DWG
(REV. MAY 4, 2010)
CCV TOPO EXPANSION 12-29-10 NORTH AREA.DWG
(REV. JANUARY 13, 2011)
CCV TOPO EXPANSION 01-28-11 SOUTH AREA.DWG
(REV. JANUARY 28, 2011)
SH67 TOPO 7-07-11.DWG
(REV. JULY 11, 2011)
VLF2 TOPO EXPANSION 8-05-11.DWG
(REV. AUGUST 9, 2011)
09028-COMPOSITE-TOPO MLE LIMITS.DWG
(REV. MAY 28, 2010 FROM CC&V)



CLIENT	CRIPPLE CREEK & VICTOR GOLD MINING COMPANY			
PROJECT	SQUAW GULCH VLF			
TITLE	PHASE 2 SQUAW GULCH GRADING PLAN			
DESIGNED BY	JNM	CHECKED BY	MEN	
DRAWN BY	DS	APPROVED BY	CJB	
FILENAME 1125GM56		DRAWING No. A210	REV 2	

2	02/13/14	REVISED ADR SITE RE-ISSUED FOR CONSTRUCTION	MEN	PBS
1	08/15/13	REVISED HAUL ROAD RE-ISSUED FOR CONSTRUCTION	MEN	CAS
0	01/07/13	ISSUED FOR CONSTRUCTION	JNM	CMT

DISCLAIMER
AMEC PRODUCED THE INFORMATION PRESENTED ON THIS DRAWING THROUGH THE USE OF TECHNICAL INFORMATION AND PRACTICAL EXPERIENCE SPECIFIC TO ITS EFFORTS. RECEIVING THIS DRAWING DOES NOT GUARANTEE ANY RIGHTS TO SUCH TECHNICAL INFORMATION AND PRACTICAL EXPERIENCE. ANY ALTERATION OR ADAPTATION OF THE DATA OR CONTENTS OF THIS DRAWING SHALL BE AT USER'S SOLE RISK AND WITHOUT ANY LIABILITY OR LEGAL RESPONSIBILITY TO AMEC.

